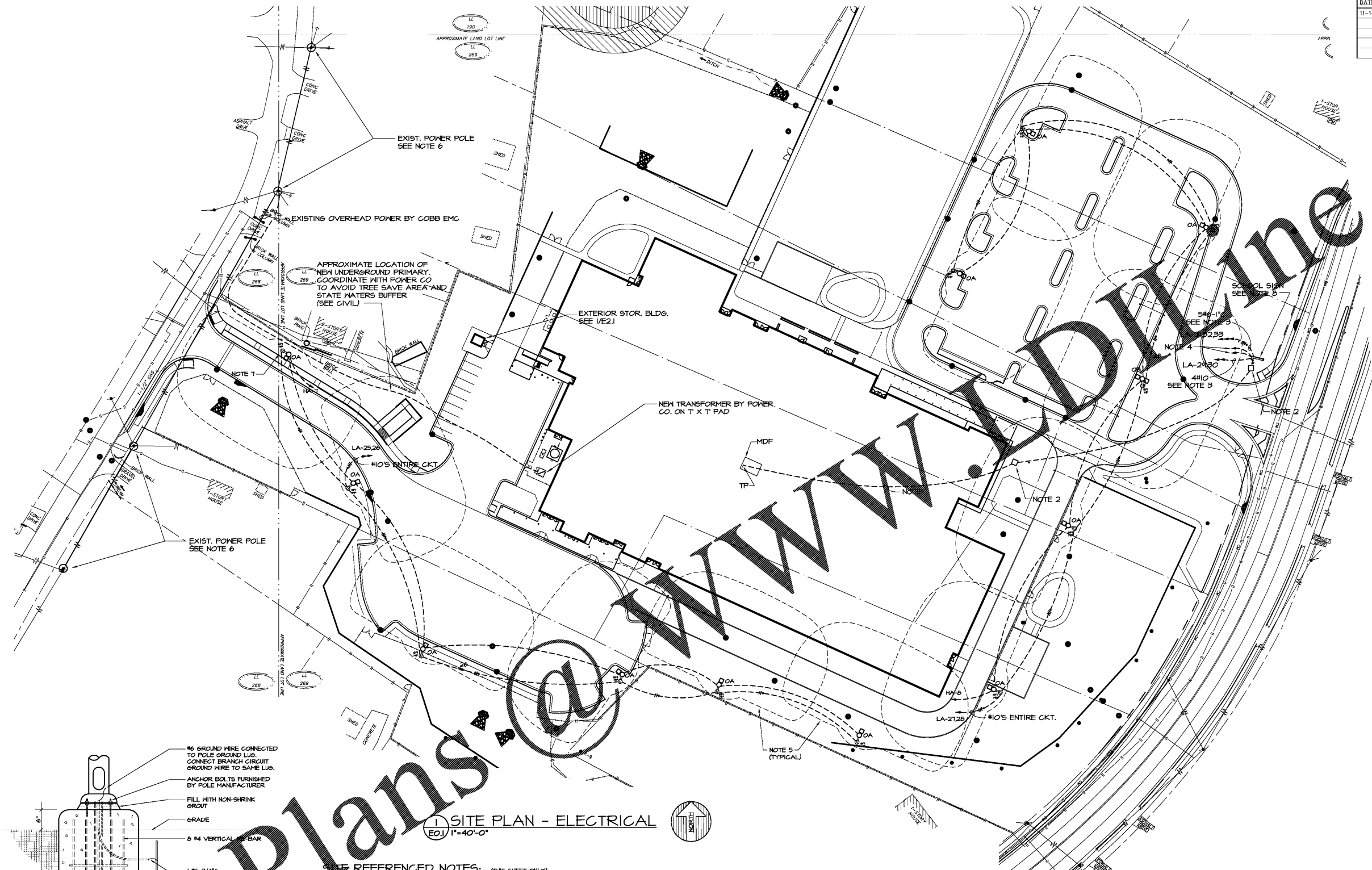


DRAWING ISSUE RECORD		
DATE	REVISIONS	NO.
11-1-18	ISSUE TO BID	

HARMONY LELAND CLAY SCHOOL
 REPLACEMENT ELEMENTARY SCHOOL
 6326 FACTORY SHOES RD. NW
 FOR COBB COUNTY SCHOOL DISTRICT
 COBB COUNTY, GA
 CCSD PROJECT No. A004 / DOE FACI CODE
 JOB NO. SHL-002-18
 DATE JULY 16, 2018
 DWG. BY G.S.H.
 CK G.L.K.

cunningham forehand matthews
 cummingham, forehand, matthews & moore, architects, inc. - 2011 manchester street, n.e. - atlanta, georgia 30324 - phone (404) 873-2152

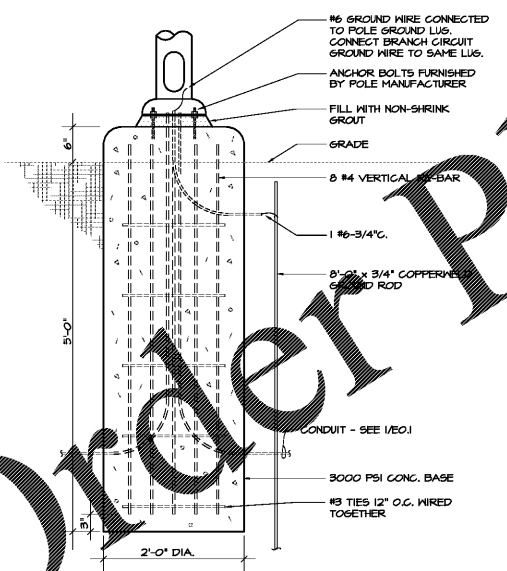
E0.1



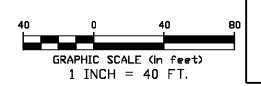
1 SITE PLAN - ELECTRICAL
 EQ.1 1"=40'-0"

- SITE REFERENCED NOTES:** (THIS SHEET ONLY)
- RUN THREE 4" PVC CONDUITS FROM TELEPHONE PANEL TP TO PULL BOX AT PROPERTY LINE AT STREET FOR TELEPHONE AND FIBER DATA SERVICES.
 - PULL BOXES SHALL BE 4' X 4' X 3' DEEP, FLUSH WITH GRADE. PROVIDE HEAVY DUTY COVER WITH HINGED STEEL ACCESS HATCH. INSTALL ALL PULL BOXES IN GRASS AREAS.
 - INSTALL FIVE 120V CIRCUITS (2 FOR SIGN FACE, 1 FOR MESSAGE BOARD LIGHTING, ONE AT SIGN BASE, # 1 FOR NETWORK SWITCH) TO LEED SIGN. CONNECT CIRCUIT LA-1 TO UPPER BACKLIT PORTION OF LEED SIGN PER MFG'S INSTRUCTIONS. ROUTE CKT. LA-1 THROUGH NEW 30A-2P DISCONNECT IN NEMA 3R ENCLOSURE MOUNTED TO POST/SUPPORT. CONNECT CKT. LA-4 TO NEW GFI, WEATHERPROOF RECEPTACLE MOUNTED ON POST/SUPPORT.
 - PROVIDE TWO 2" CONDUITS (FOR DATA) FROM SIGN TO ACCESSIBLE CEILING ABOVE ADMIN AREA. COORDINATE WITH OWNER FOR EXACT LOCATION AND CONNECTION DETAILS.
 - APPROXIMATE LOCATION OF 1/2 FOOT-CANDLE ILLUMINATION LEVEL ON GROUND PER INITIAL SITE LIGHTING PROPOSAL.
 - EXISTING GEORGIA POWER POLE WITH JOINT USE WITH COBB EMC. COORDINATE WITH POWER COMPANIES TO RELOCATE AS NECESSARY FOR NEW DRIVES/CONSTRUCTION.
 - INSTALL 20A-WEATHERPROOF, GFI RECEPTACLE ON POLE BASE ADJACENT TO HAND HOLE.
 - INSTALL THREE 3/4" DIAMETER, 10' COPPER CLAD STEEL GROUND RODS AND CONNECT TO SIGN AS DIRECTED BY MANUFACTURER'S INSTRUCTIONS. PROVIDE 3" CONDUITS FROM POWER DISCONNECT AND DATA CONVERTER LOCATIONS THROUGH SIGN SUPPORT TO SIGN CONNECTION POINTS AS SHOWN IN SIGN SUBMITTALS.

- GENERAL SITE PLAN NOTES**
- THIS LIGHTING PLAN IS PRELIMINARY AND MAY BE SUBJECT TO CHANGE BY COBB EMC OR OTHER SUBSEQUENT DESIGNER. ANY SUBSEQUENT LIGHTING PLANS MUST ADHERE TO COBB COUNTY DEVELOPMENT STANDARDS AND BE SUBMITTED TO THE COBB COUNTY SITE PLAN REVIEW SECTION FOR REVIEW AND APPROVAL PRIOR TO THE INSTALLATION OF ANY LIGHTS, POLES, OR WIRING.
 - THE COBB COUNTY ARBORIST OR LANDSCAPE ARCHITECT MUST APPROVE THE SITE LIGHTING PLAN. LIGHT POLES ARE NOT PERMITTED IN PARKING PENINSULAS, ISLANDS AND MEDIANS WITHOUT PRIOR APPROVAL OF THE COUNTY ARBORIST. 20' MINIMUM SPACING IS REQUIRED BETWEEN TRUNK OF ANY PROPOSED OVER-STORY HARDWOOD TREE (OR EXISTING TREE COUNTED FOR TREE ORDINANCE CREDIT) AND ANY EXISTING OR PROPOSED LIGHT POLE. IF THE SERVICE PROVIDER (ELECTRIC COMPANY) PRODUCES A LIGHTING PLAN, IT MUST ADHERE TO THE LIGHTING PLAN SHOWN IN THE CIVIL ENGINEERING DRAWINGS APPROVED BY COBB COUNTY FOR THE LAND DISTURBANCE PERMIT. IF A LIGHTING PLAN IS NOT PART OF THE CIVIL DRAWINGS, THE LIGHTING PLAN DESIGNER MUST SUBMIT A PLAN TO THE ARBORIST/LANDSCAPE ARCHITECT FOR REVIEW AND APPROVAL. IF SITE LIGHTING IS INSTALLED WITHOUT AN APPROVED PLAN, THE CERTIFICATE OF OCCUPANCY WILL BE WITHHELD UNTIL ALL CONFLICTING POWER POLES ARE MOVED. CALL 770-528-2124.



2 POLE BASE DETAIL
 NO SCALE



24HR EMERGENCY CONTACT
 LARRY WALL
 COBB COUNTY SCHOOLS
 (770) 590-4518

IF YOU DID GEORGIA...
 CALL US FIRST!
 UTILITIES PROTECTIVE CENTER
 METRO ATLANTA (770) 432-4334
 STATE WIDE (800) 282-7411
 IT'S THE LAW!



Order Plans @ www.dawne.com