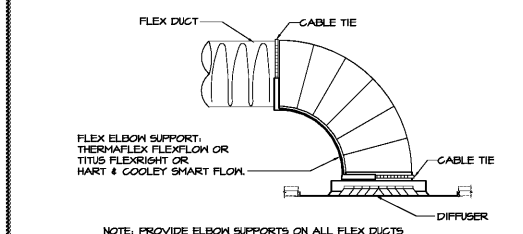


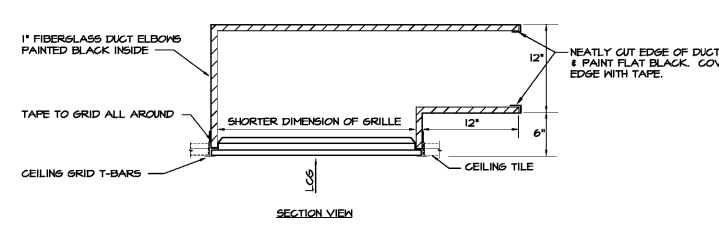
DRAWING ISSUE RECORD		
DATE	REVISIONS	NO.
11-1-18	ISSUE TO B'D	

HARMONY ELEMENTARY SCHOOL  
 REPLACEMENT ELEMENTARY SCHOOL  
 6526 FACTORY SQUARES RD., NW  
 MABLETON, GA 30126  
 FOR COBB COUNTY SCHOOL DISTRICT  
 COBB COUNTY, GA  
 CCSD PROJECT NO. ADD / DDC FACILITY CODE  
 DATE: JULY 16, 2018  
 JOB NO. B-L-200-18  
 DWG. BY: CFA/RLJ

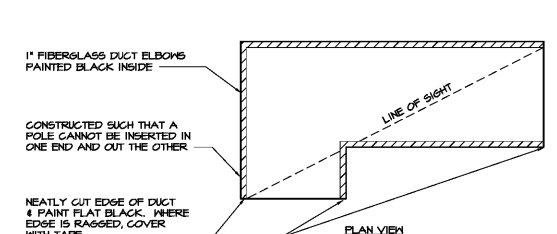
cunningham forhand matthews moore  
 cunningham, forhand, matthews & moore, architects, inc. - 2011 manchester street, n.e. - atlanta, georgia 30324 - phone (404) 873-2152  
 M2.2



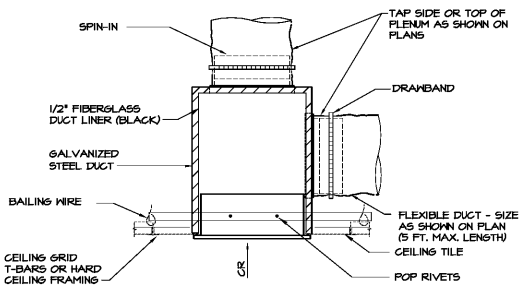
1 DIFFUSER FLEX SUPPORT DETAIL  
 M2.2 NO SCALE



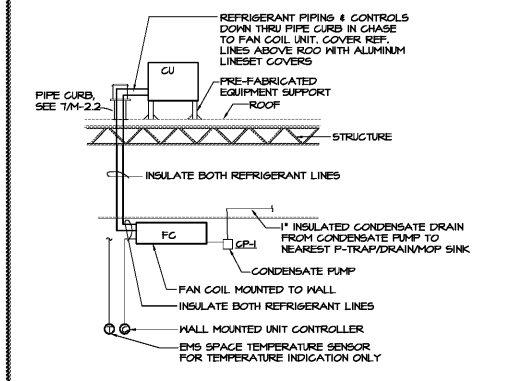
2 LCG RETURN AIR GRILLE SOUNDTRAP DETAIL  
 M2.2 NO SCALE



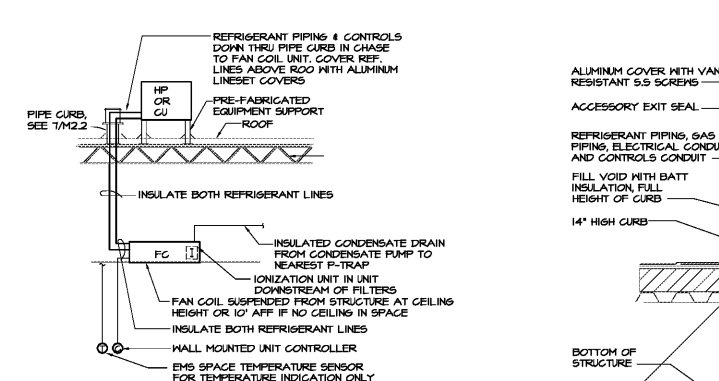
3 RETURN AIR TRANSFER DUCT DETAIL  
 M2.2 NO SCALE - SCHEMATIC ONLY



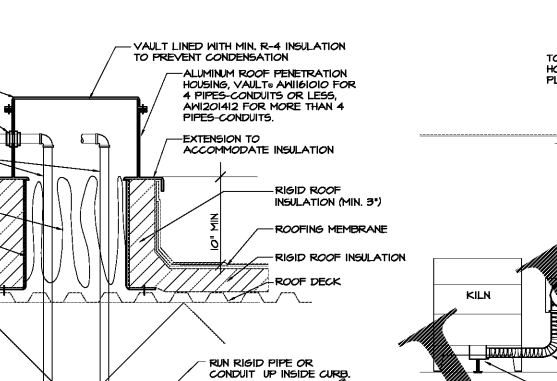
4 LCG/CR PLENUM DETAIL  
 M2.2 NO SCALE



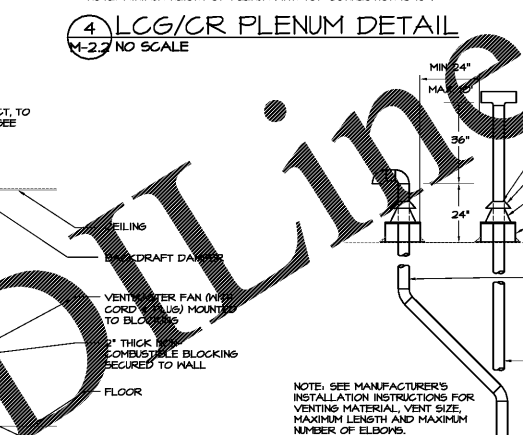
5 TYPICAL MDF ROOM AIR CONDITIONING  
 M2.2 NO SCALE



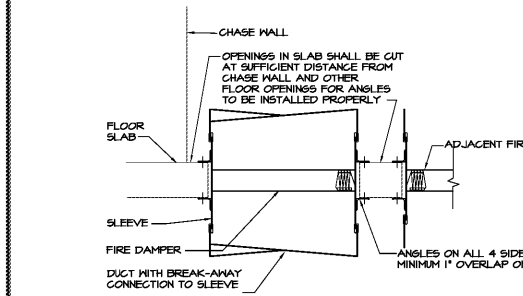
6 TYPICAL CEILING DUCTLESS SPLIT ROOM AIR CONDITIONING  
 M2.2 NO SCALE



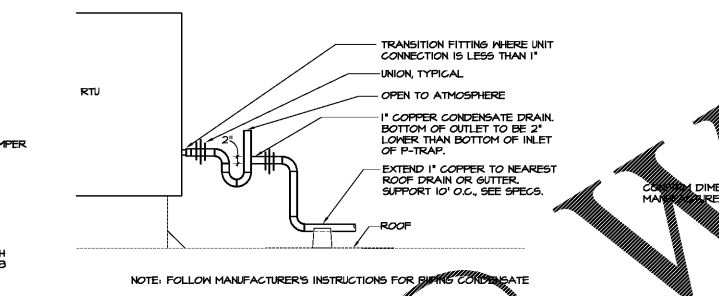
7 PIPE CURB DETAIL  
 M2.2 NO SCALE - SCHEMATIC ONLY



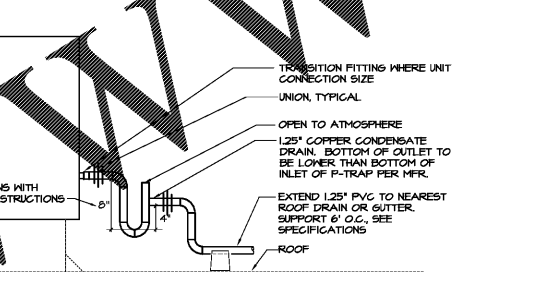
8 KILN VENTILATION SYSTEM  
 M2.2 NO SCALE



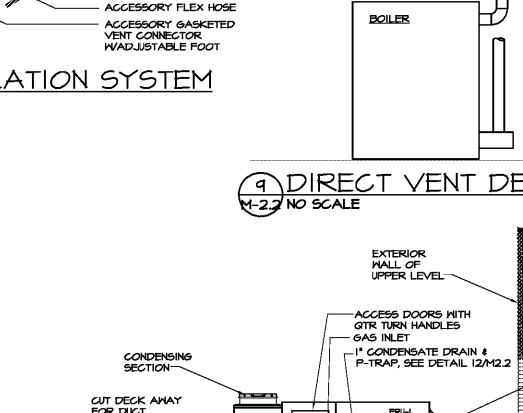
9 FIRE DAMPER AT FLOOR PENETRATION DETAIL  
 M2.2 NO SCALE



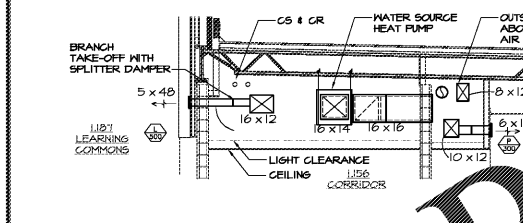
10 RTU CONDENSATE DRAIN DETAIL  
 M2.2 NOT TO SCALE - SCHEMATIC ONLY



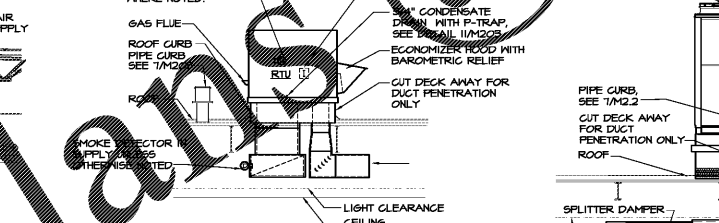
11 ERU CONDENSATE DRAIN DETAIL  
 M2.2 NOT TO SCALE - SCHEMATIC ONLY



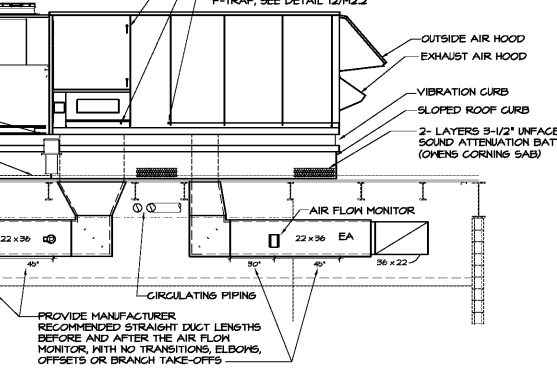
12 DIRECT VENT DETAIL  
 M2.2 NO SCALE



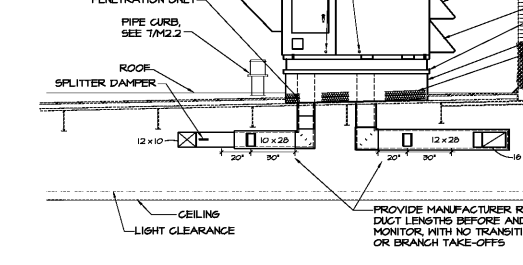
13 SECTION @ CORR 15  
 M2.2 1/4"=1'-0"



14 TYPICAL RTU DETAIL  
 M2.2 1/4"=1'-0"



15 SECTION AT ERU-1  
 M2.2 1/4"=1'-0"



16 SECTION AT ERU-2  
 M2.2 1/4"=1'-0"



17 SECTION @ CORR 15  
 M2.2 1/4"=1'-0"



18 TYPICAL RTU DETAIL  
 M2.2 1/4"=1'-0"



19 SECTION AT ERU-2  
 M2.2 1/4"=1'-0"



20 SECTION AT ERU-1  
 M2.2 1/4"=1'-0"



21 SECTION @ CORR 15  
 M2.2 1/4"=1'-0"



22 TYPICAL RTU DETAIL  
 M2.2 1/4"=1'-0"

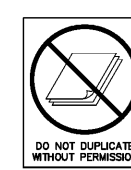


23 SECTION AT ERU-2  
 M2.2 1/4"=1'-0"



24 SECTION AT ERU-1  
 M2.2 1/4"=1'-0"

Order Plans



SPURLOCK & ASSOCIATES, INC.  
 consulting engineers  
 2970 Clairmont Rd., Suite 420 | Atlanta, GA 30329  
 P: 404.633.0245 | F: 404.633.1736  
 JOB NO. 1822