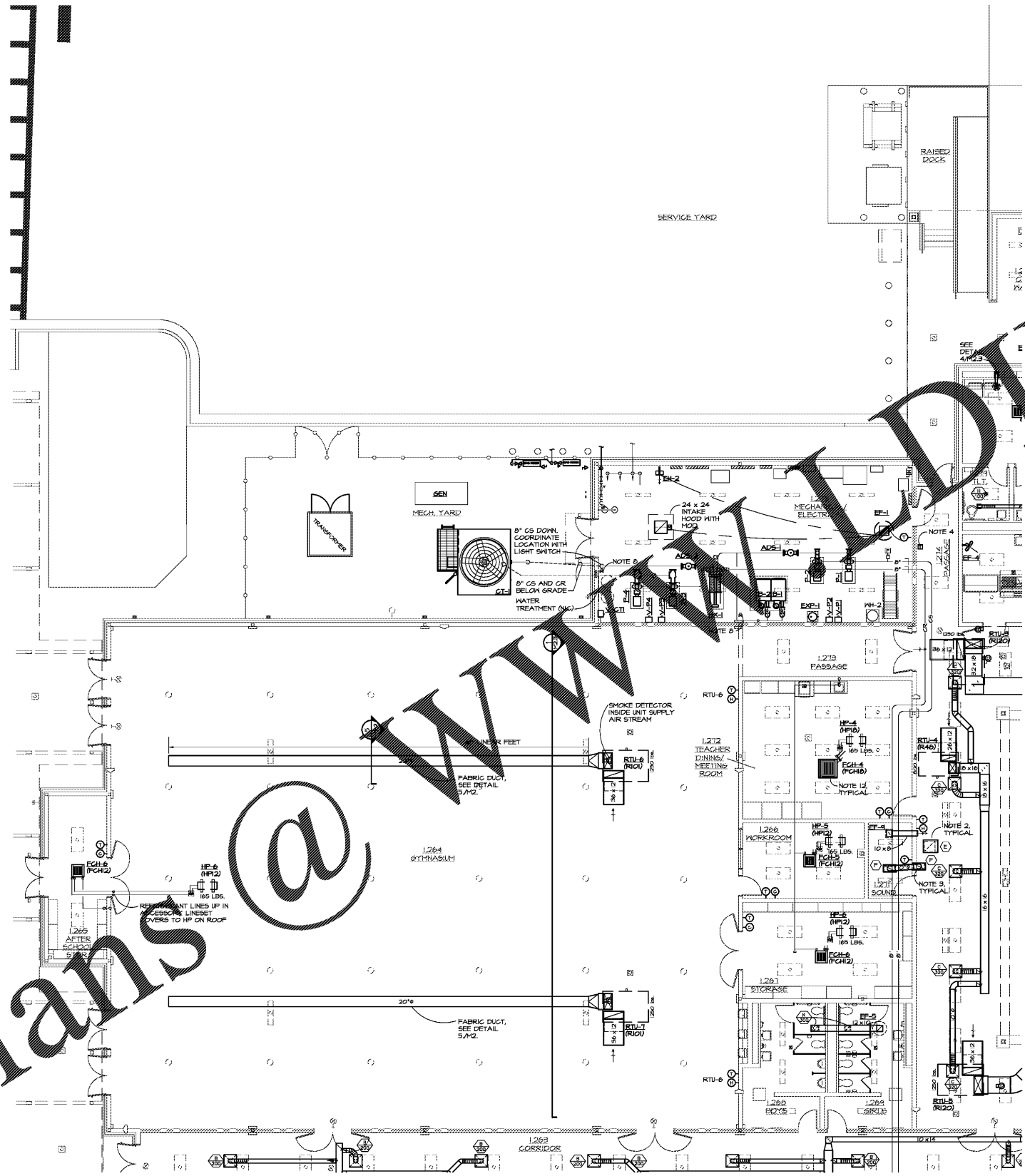


DRAWING ISSUE RECORD		
DATE	REVISIONS	NO.
11-18	66E TO BID	



**GENERAL NOTES: (ALL SHEETS)**

- A. CONTRACTOR SHALL NOTIFY ENGINEER IN WRITING OF ANY DISCREPANCIES OF EXISTING CONDITIONS FROM THAT SHOWN ON PLANS OR OF ANY CONDITION PROHIBITING WORK TO BE INSTALLED AS SHOWN ON PLANS BEFORE WORK IS BEGUN.
- B. ALL PENETRATIONS THROUGH FIRE WALLS AND RATED FLOOR SLABS SHALL BE FIRE STOPPED WITH 3H FIRE BARRIER OR EQUAL. DUCT PENETRATIONS SHALL BE LISTED OR ASTM E814 FIRE RATINGS IN ACCORDANCE WITH ARTICLE 903-21 OF THE NATIONAL ELECTRICAL CODE, SEE ARCH. SPECS. FOR FIRE STOPPING DETAILS.
- C. ALL AREAS OF THE BUILDING WHERE CORRIDORS HAVE RETURN AIR PLENUMS ABOVE CEILING. ALL MATERIALS EXPOSED TO THESE PLENUMS ARE REQUIRED TO BE NON-COMBUSTIBLE PER ALL APPLICABLE CODES. INDEX OF NOT MORE THAN 25 AND A SMOKE DEVELOPED INDEX OF NOT MORE THAN 50 AS DETERMINED IN ACCORDANCE WITH ASTM E84.
- D. WHERE DUCT LINE INDICATION ON THE DRAWINGS THE DUCT SIZES SHOWN ON THE DRAWINGS ARE NEAR INSTALLED DIMENSIONS AFTER THE LINER IS INSTALLED. INCREASE THE SIZE OF THE METAL DUCT TO ALLOW FOR THE LINER.
- E. IONIZATION DEVICES ARE NOT SHOWN ON FLOOR PLANS BUT SHALL BE INSTALLED FOR EACH FLOOR OF AIR CONDITIONING EQUIPMENT PER SCHEDULE FOUND ON SHEET 5M2.2.
- F. HVAC IS DESIGNED IN COMPLIANCE WITH 2009 INTERNATIONAL ENERGY CONSERVATION CODE.
- G. ALL EXPOSED DUCTWORK SHALL BE FREE OF DENTS AND SCRATCHES AND LEFT CLEAN, FREE OF GREASE, STICKERS AND MASTIC. EXPOSED DUCT JOINTS SHALL BE CONNECTED WITH DUCTMATE OR SPIRALMATE FLANGES WITH INTEGRAL SEALS THAT DO NOT REQUIRE MASTIC.
- H. INSTALL FLEX SUPPORT ON DIFFUSERS AND GRILLES. SEE DETAIL 5M1.2.

**REFERENCED NOTES: (ALL SHEETS)**

- 1. SHADED DIFFUSER QUADRANT INDICATES 3-WAY DIFFUSER ORIENTED TO BLOW AWAY FROM SHADED PORTION. TWO QUADRANTS SHADED INDICATES 2-WAY BLOW 3 QUADRANTS SHADED INDICATES 1-WAY BLOW.
- 2. RETURN AIR SOUND TRAP, TYPICAL ON ALL GRILLES, SEE DETAIL 2M2.2.
- 3. DUCT TO PLENUM CONNECTION SEE DETAIL 4M2.2.
- 4. 24V TRANSFORMER ABOVE CEILING TO POWER TRAP PRIMERS.
- 5. INSTALL WSPF, SEE DETAILS 3-6/M2.1.
- 6. F-TRAP ABOVE CEILING, SEE DETAIL 1M2.1.
- 7. INSTALL SMOKE DAMPER IN NECK OF DIFFUSER.
- 8. ELECTRONIC SOLENOID TRAP PRIMER FOR FLOOR DRAINS, SEE PLUMBING AND E-M.
- 9. RETURN AIR SOUND TRAP TRANSFER DUCT, SEE DETAIL 6M2.2.
- 10. DUCT UP / DN WITH FIRE DAMPER AT FLOOR, SEE 10M2.2.
- 11. DUCT UP / DN WITH FIRE DAMPER AT WALL WITH ACCESS PANEL BELOW.
- 12. DUCTLESS SPLIT SYSTEM, SEE 5 & 6/M2.2.
- 13. INSTALL VRF SYSTEMS PER MANUFACTURER'S INSTRUCTIONS, PIPING AND WIRING DIAGRAMS, ROUTE CONDENSATE DRAINS TO F-TRAPS PER DETAIL 1M2.2. ROUTING OF PIPING FROM EACH UNIT NOT SHOWN FOR CLARITY.
- 14. INSTALL AUTOMATIC AIR VENTS AT END OF MAINS AND HIGH POINTS.
- 15. HOSE-END DRAIN VALVES TO CLEAN UPPER LEVEL PIPING SEPARATELY, IF NEEDED.
- 16. WHERE THE MAIN TRUNK DUCT INTO A CLASSROOM IS SHOWN OFFSETTING AROUND DIFFUSERS, OMIT ELBOWS AND INSTALL THE DUCT STRAIGHT INTO ROOM.

① MAIN LEVEL PARTIAL PLAN - HVAC  
M1.1 1/8"=1'-0"

Order Plans @

WWW.DIMENSIONS.COM

HARMONY LELAND-CITY SCHOOL  
REPLACEMENT ELEMENTARY SCHOOL  
6508 FACTORY SQUARE DR., NW  
MABLETON, GA 30126  
FOR COBB COUNTY SCHOOL DISTRICT  
COBB COUNTY, GA  
CCSD PROJECT NO. A004 / IDE FACILITY CODE  
JOB NO. 81-1-200-18  
DATE: JULY 16, 2019  
DWG. BY: CFA/RLM

cunningham, forehand, matthews & moore, architects, inc. - atlanta, georgia 30324 - phone (404) 873-2152

