

DRAWING ISSUE RECORD		
DATE	REVISIONS	NO.
11-1-18	ISSUE TO BID	

**SPRINKLER NOTES:**

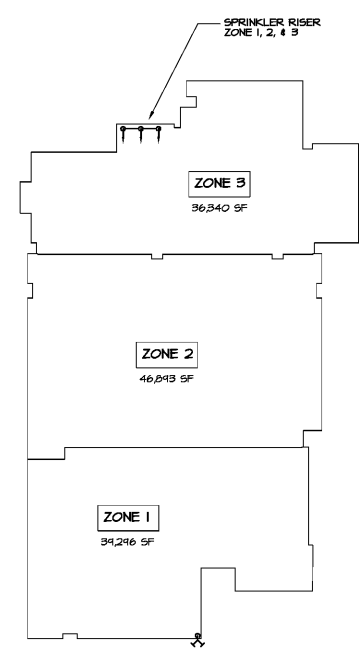
- A. CONTRACTOR SHALL RELOCATE ALL EXISTING SPRINKLER PIPING AND RELOCATE HEADS AS NECESSARY TO CLEAR THE REQUIRED SERVICE AREAS OF THE NEW WATER SOURCE HEAT PUMPS AND THE DUCTWORK CHANGES TO OTHER UNITS. CONTRACTOR SHALL FIELD VERIFY EXISTING SPRINKLERS LOCATION, THE PROPOSED LOCATION OF THE NEW WATER SOURCE HEAT PUMPS ARE SHOWN ON THE MESH DRAWINGS. SEE MECHANICAL SHEETS FOR COORDINATION BETWEEN THE TRADES IN CORRIDORS & SHEET #22 BUILDING SECTIONS. SPRINKLER PIPING SHALL NOT BE INSTALLED IN HVAC SERVICE CLEARANCES. ALL OFFSETS SHALL BE HORIZONTAL WITH NO CHANGE IN ELEVATION.
- B. CONTRACTOR SHALL EXTEND EXISTING SPRINKLER HEADS AS NECESSARY WHERE NEW CEILING ARE BEING INSTALLED. SEE ARCHITECTURAL AND ELECTRICAL DRAWINGS FOR NEW CEILING LOCATIONS.
- C. CONTRACTOR SHALL RELOCATE SPRINKLER HEADS TO AVOID LIGHTING FIXTURES. SEE ARCHITECTURAL AND ELECTRICAL DRAWINGS FOR REFLECTED CEILING PLANS. LOCATE SPRINKLER HEADS IN CENTER OR QUARTER POINTS OF 4x2 TILE.
- D. CONTRACTOR SHALL INSTALL ADDITIONAL HEADS AS NECESSARY TO MAINTAIN CODE REQUIRED MINIMUM COVERAGE IN AREAS WHERE HALL LAYOUTS HAVE CHANGED.
- E. CONTRACTOR SHALL OBTAIN FIRE MARSHAL APPROVAL BEFORE MAKING MODIFICATIONS TO THE SPRINKLER SYSTEM. THIS MAY REQUIRE SPRINKLER SHOP DRAWINGS TO BE SUBMITTED. A PERMIT MUST BE OBTAINED BEFORE ANY SPRINKLER WORK IS INSTALLED.
- F. REMOVE SPRINKLER ESCUTCHEONS AND REINSTALL IN AREAS SHOWN TO HAVE NEW CEILING.

- NOTE:**
1. A COMPLETE SET OF SPRINKLER SHOP DRAWINGS SHALL BE SUBMITTED TO THE GWINNETT COUNTY FIRE MARSHAL'S OFFICE, APPROVED, AND A PERMIT OBTAINED BEFORE ANY SPRINKLER WORK IS INSTALLED.
  2. FIRE SPRINKLER CONTRACTOR SHALL OBTAIN A FIRE SPRINKLER SYSTEM PERMIT FROM THE GWINNETT COUNTY FIRE MARSHAL'S OFFICE PRIOR TO INSTALLATION.
  3. FIRE SPRINKLER SYSTEM TO BE PROVIDED IN ACCORDANCE WITH THE GWINNETT COUNTY FIRE PROTECTION AND LIFE SAFETY ORDINANCE AND NFPA 13.

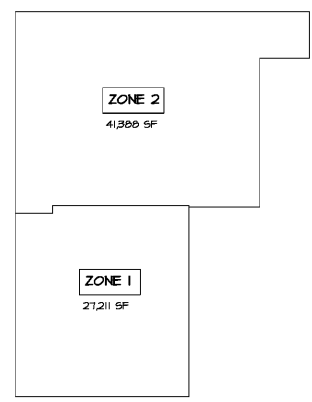
**WATER FLOW TEST DATA**  
 FLOW TEST DATE: 8/30/2018  
 TEST LOCATION: HYDRANT A 6306 FACTORY SHOALS ROAD  
 PIPE SIZE: 8"  
 PITOT: 68  
 STATIC PRESSURE: 40 PSI  
 RESIDUAL PRESSURE: 80 PSI  
 FLOW - 1875 GPM  
 FLOW AVAILABLE @ 20 P.S.I. = 3432 GPM

FIRE FLOW TEST PROVIDED BY CLIFF'S FIRE EXTINGUISHER CO., INC.

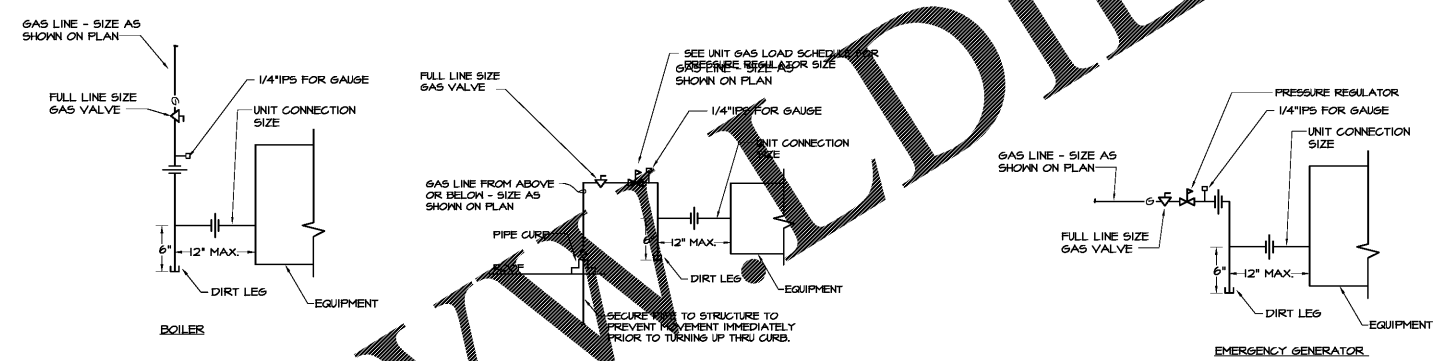
**NOTE:** FLOW TEST ABOVE IS FOR PERMITTING PURPOSE ONLY. SPRINKLER CONTRACTOR SHALL PERFORM A SEPARATE 24 HOUR FLOW TEST TO CONFIRM PRESSURES FOR THE DESIGN OF THE FIRE PROTECTION SYSTEM.



FIRST FLOOR

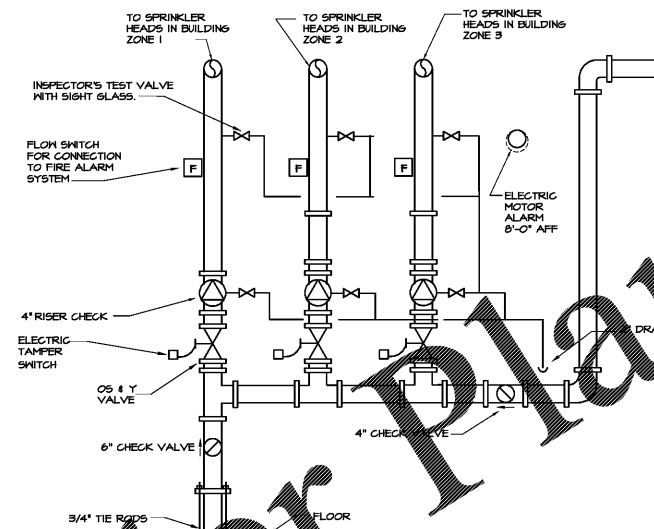


SECOND FLOOR



TYPICAL GAS CONNECTION DETAIL  
 P3.3 NO SCALE - SCHEMATIC ONLY

**3 FIRE PROTECTION PLAN**  
 P3.3 NO SCALE - SCHEMATIC ONLY

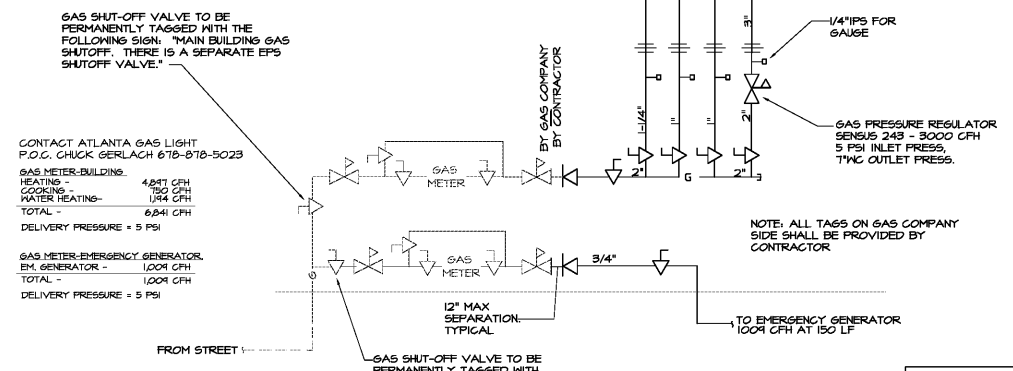


**WATER FLOW TEST DATA**  
 FLOW TEST DATE: 8/30/2018  
 TEST LOCATION: 6326 Factory Shoals Road  
 STATIC PRESSURE: 40 PSI  
 RESIDUAL PRESSURE: 80 PSI  
 FLOW - 1875 GPM  
 FLOW AVAILABLE @ 20 P.S.I. = 3432 GPM

**NOTE:** FLOW TEST ABOVE IS FOR PERMITTING PURPOSE ONLY. SPRINKLER CONTRACTOR SHALL PERFORM A SEPARATE 24 HOUR FLOW TEST TO CONFIRM PRESSURES FOR THE DESIGN OF THE FIRE PROTECTION SYSTEM. ALL FIRE FLOWS SHALL MEET THE REQUIRED FLOW RATES FOUND IN INTERNATIONAL FIRE CODES 2012 APPENDIX B.

GAS PRESSURE REGULATOR SIZING						
ROOF-TOP UNIT DESIGNATION	R48	R60	RT2	R10/R120	ERU-1	ERU-2,3,4,4
GAS LOAD (CFH)	72	115	125	180	75	200
SENSUS GAS PRESSURE REG MODEL #	446	446	446	446	446	446
INLET GAS PRESSURE	5 PSI	5 PSI	5 PSI	5 PSI	5 PSI	5 PSI
OUTLET GAS PRESSURE	7" W.C.	7" W.C.	7" W.C.	7" W.C.	7" W.C.	7" W.C.

**1 SPRINKLER RISER #1 DETAIL**  
 P3.3 NO SCALE - SCHEMATIC ONLY



**2 GAS METER DETAIL**  
 P3.3 NO SCALE - SCHEMATIC ONLY

SEE P.I.1 FOR GENERAL AND REFERENCED NOTES

Order Plans @

WWW.DILine.com

HARMONY LELAND-CRITCHEL  
 REPLACEMENT ELEMENTARY SCHOOL  
 6326 FACTORY SHOALS RD., NW  
 MABLETON, GA 30126  
 FOR COBB COUNTY SCHOOL DISTRICT  
 COBB COUNTY, GA  
 CCSD PROJECT NO. A004 / DDE FACILITY CODE  
 DATE: JUL 16, 2018  
 JOB NO. B-L-1509-18  
 DWG. BY: JCF  
 CHECKED BY: MUD.

cunningham forehand matthews moore  
 cunningham, forehand, matthews & moore, architects, inc. - 2011 manchester street, n.e. - atlanta, georgia 30324 - phone (404) 873-2152



**SPURLOCK & ASSOCIATES, INC.**  
 consulting engineers  
 2970 Clairmont Rd., Suite 620 | Atlanta, GA 30329  
 P: 404.633.0245 | F: 404.633.1756  
 JOB NO. 1822

