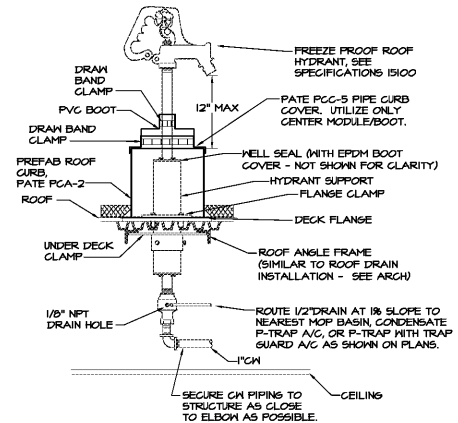
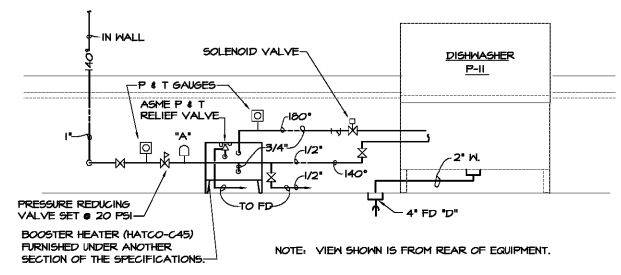


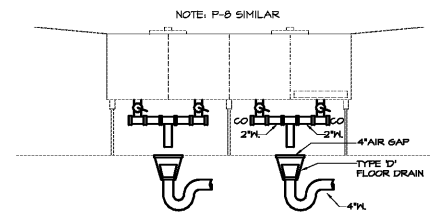
DRAWING ISSUE RECORD		
DATE	REVISIONS	NO.
11-1-8	ISSUE TO BID	



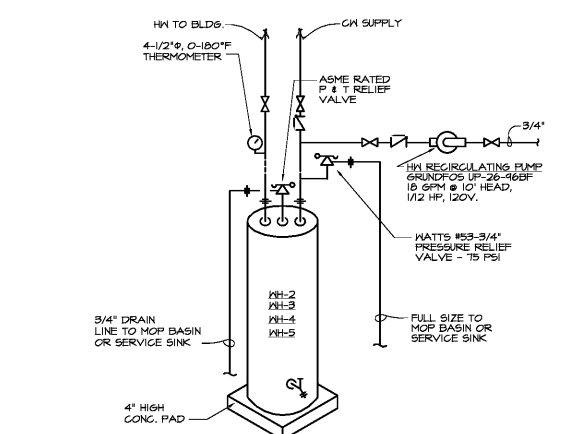
7 ROOF HYDRANT DETAIL
P3.2 NO SCALE - SCHEMATIC ONLY



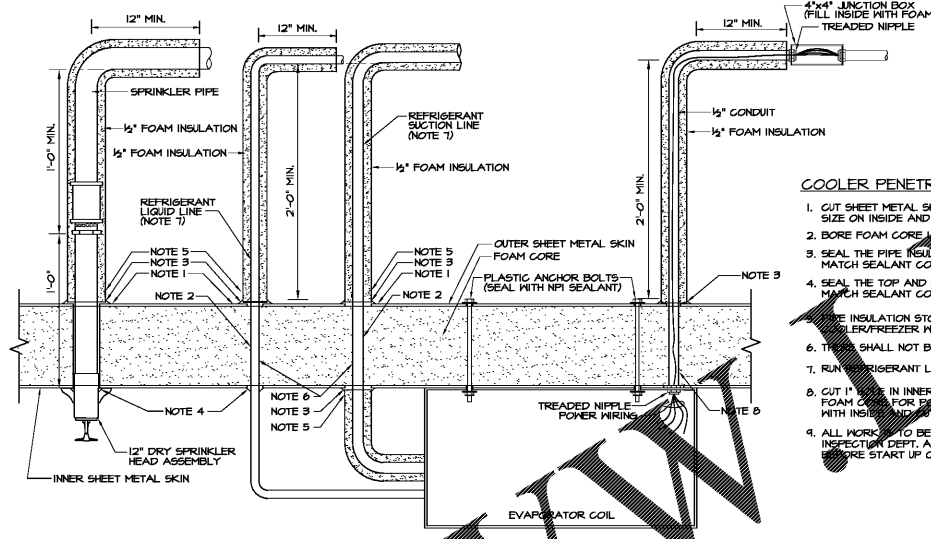
4 DISHWASHER PIPING DETAIL
P3.2 NO SCALE - SCHEMATIC ONLY



1 POT SINK DETAIL
P3.2 NO SCALE - SCHEMATIC ONLY

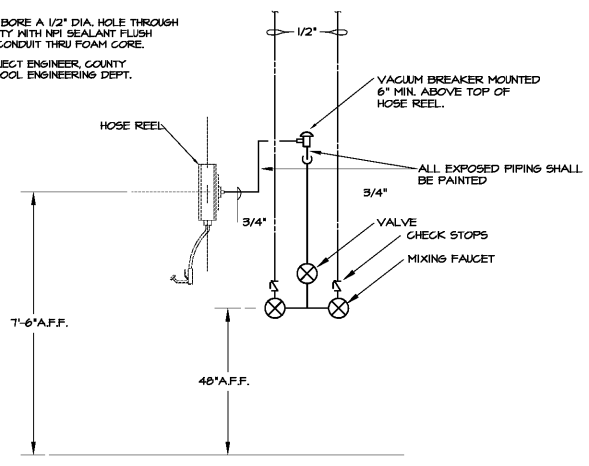


8 WATER HEATERS WH-2-5 DETAIL
P3.2 NO SCALE - SCHEMATIC ONLY

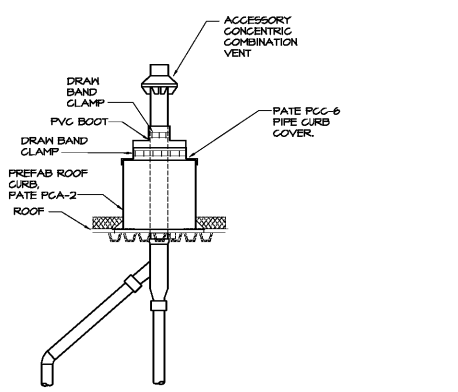


5 COOLER/FREEZER PENETRATION DETAIL
P3.2 NO SCALE

- COOLER PENETRATION NOTES:** (APPLY TO THIS DETAIL ONLY)
- CUT SHEET METAL SKIN NOT MORE THAN 1/2" SMALLER THAN PENETRATION SIZE ON INSIDE AND OUTSIDE.
 - BORE FOAM CORE 1/2" DIA. SMALLER THAN PENETRATION SIZE TO INSURE A TIGHT FIT.
 - SEAL THE PIPE INSULATION TO SHEET METAL WITH NPI SEALANT ONLY. MATCH SEALANT COLOR TO ADJACENT METAL SURFACE.
 - SEAL THE TOP AND BOTTOM HOLES IN METAL ROUND PIPES WITH NPI SEALANT ONLY. MATCH SEALANT COLOR TO ADJACENT METAL SURFACE.
 - INSULATION STOPS AT SHEET METAL ON BOTH INSIDE AND OUTSIDE OF COOLER/FREEZER WALL. PIPE PENETRATIONS NOT TO GO THROUGH THE WALL.
 - THERM SHALL NOT BE ANY WELDED JOINTS INSIDE COOLER/FREEZER WALLS.
 - RUN REFRIGERANT LINES IN SEPARATE PENETRATIONS.
 - CUT 1" DIA. IN INNER AND OUTER SHEET METAL SURFACES, BORE A 1/2" DIA. HOLE THROUGH FOAM CORE FOR ENTER AND CONTROL WIRING. FILL CAVITY WITH NPI SEALANT FLUSH WITH INSIDE AND OUTSIDE METAL SURFACES. DO NOT RUN CONDUIT THRU FOAM CORE.
 - ALL WORK IS TO BE INSPECTED AND SIGNED OFF BY PROJECT ENGINEER, COUNTY INSPECTOR DEPT. AND REPRESENTATIVE FOR COUNTY SCHOOL ENGINEERING DEPT. BEFORE START UP OF EQUIPMENT.



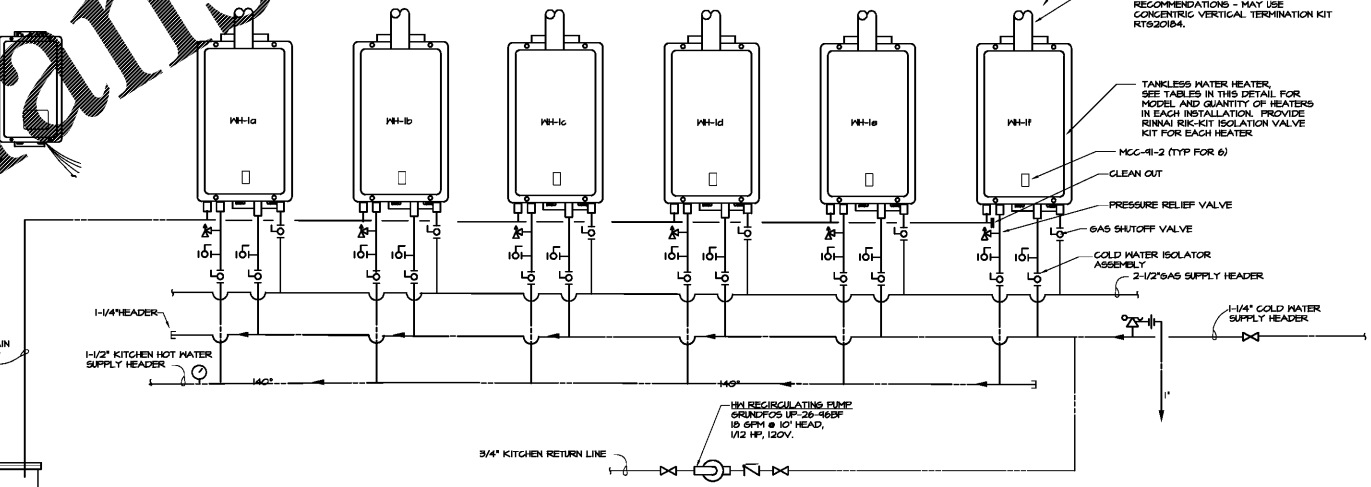
2 TYPICAL P-13 HOSE & REEL DETAIL
P3.2 NO SCALE - SCHEMATIC ONLY



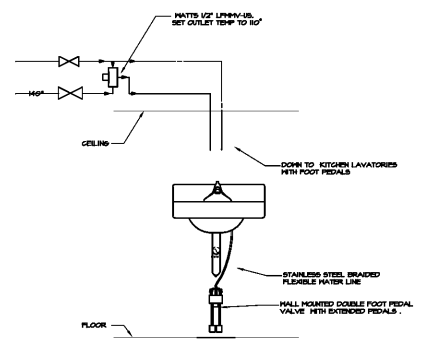
9 GAS WATER HEATER FLUE DETAIL
P3.2 NO SCALE - SCHEMATIC ONLY

WATER HEATER SCHEDULE													
DESIG.	MANUFACTURER	MODEL	GA	BTU	RECOVERY	STORAGE	KW	VOLT	PHASE	RECOVERY	RISE	SET T/STAT	RECIRC
WH-1a-1e	RINNAI	CU191	X	1144						22.8 GPM	100"	140°	YES
WH-2	A. O. SMITH	DEN-30			X	30 GAL	3	277	1	15 GPM	80°	120°	YES
WH-3	A. O. SMITH	DEN-52			X	50 GAL	12	480	3	61 GPM	80°	120°	YES
WH-4	A. O. SMITH	DEN-30			X	30 GAL	4.5	277	1	21 GPM	80°	120°	YES
WH-5	A. O. SMITH	DEN-30			X	30 GAL	3	277	1	15 GPM	80°	120°	YES

BUILDING WATER HEATERS WH-1a-1h QTY (6)
RINNAI CURB IN TANKLESS GAS WATER HEATER
RECOVERY: 22.8 GPM @ 100 DEGREE RISE EACH
TOTAL RECOVERY: 136.8 GPM @ 100 DEGREE RISE
RINNAI 1144000 BTU EACH
TOTAL INLET: 1144000 BTU
RINNAI NATURAL GAS
GAS HEADER SIZE: 2-1/2"
SET THERMOSTAT @ 140 DEGREE F



6 TANKLESS WATER HEATERS WH-1a THRU 1f DETAIL
P3.2 NO SCALE - SCHEMATIC ONLY



3 KITCHEN HANDWASH LAVATORY DETAIL
P3.2 NO SCALE - SCHEMATIC ONLY

HARMONY LELAND-CITY SCHOOL
REPLACEMENT ELEMENTARY SCHOOL
6326 FACTORY SQUARES RD., NW
MABLETON, GA 30126
FOR COBB COUNTY SCHOOL DISTRICT
COBB COUNTY, GA
CCSD PROJECT NO. ADD4 / DDE FACILITY CODE
DATE: JULY 16, 2018
JOB NO. B-L-2009-18
DWG. BY: J.C.F.

cunningham, forehand, matthews & moore, architects, inc. - 2011 manchester street, n.e. - atlanta, georgia 30324 - phone (404) 873-2152

Order Plans @

