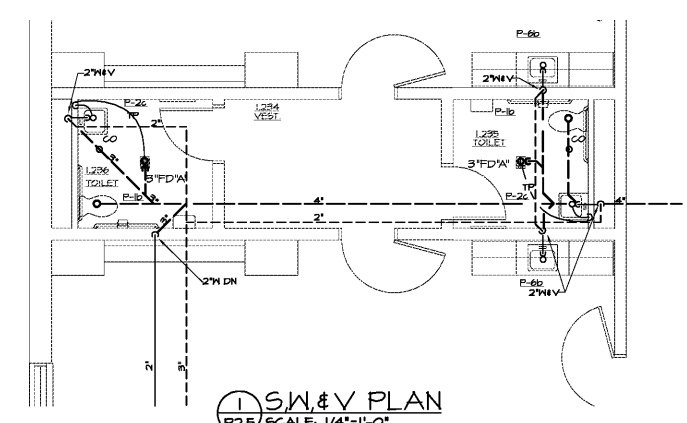


DRAWING ISSUE RECORD		
DATE:	REVISIONS:	NO.
1-1-18	ISSUE TO B'D	

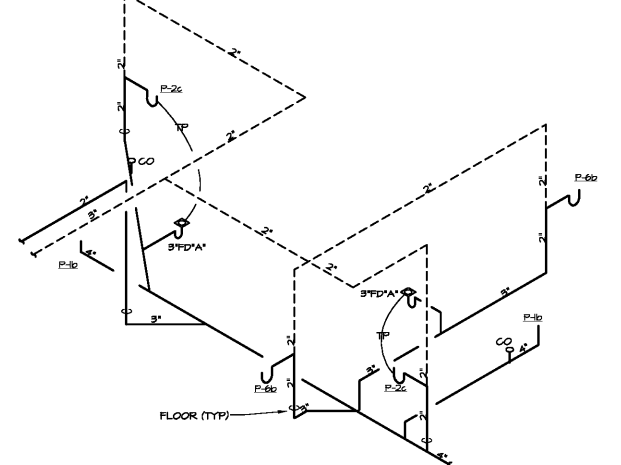
HARMONY LELAND-CIT SCHOOL
 REPLACEMENT ELEMENTARY SCHOOL
 6526 FACTORY SQUARES RD., NW
 MABLETON, GA 30126
 FOR COBB COUNTY SCHOOL DISTRICT
 COBB COUNTY, GA
 CCSD PROJECT NO. A004 / UDE FACILITY CODE
 JOB NO. B-L-2019-18
 DATE JULY 16, 2019
 DESIGNED BY J.C.F.
 DRAWN BY M.W.D.

cunningham forhand matthews moore
 cunningham, forhand, matthews & moore, architects, inc. - 2011 manchester street, n.e. - atlanta, georgia 30324 - phone (404) 873-2152

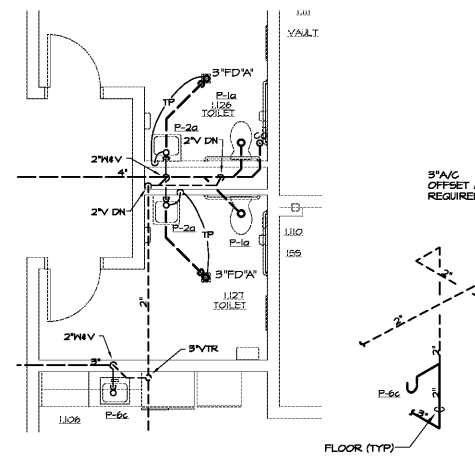
P2.5



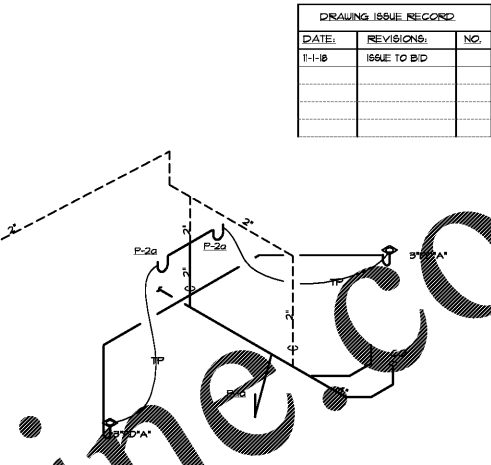
1 SW, & V PLAN
 P2.5 SCALE: 1/4"=1'-0"



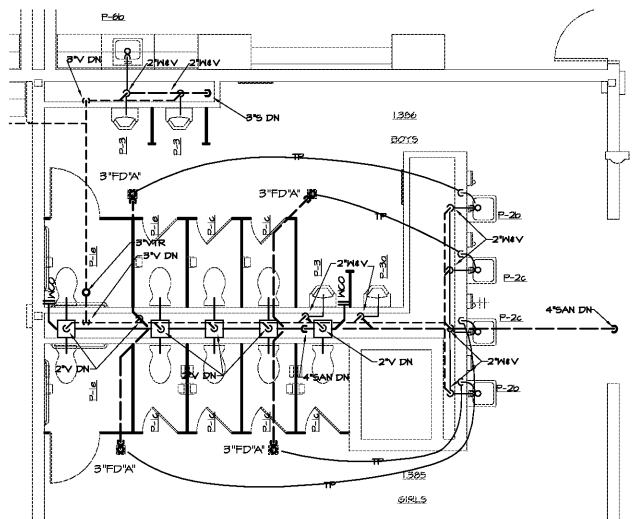
2 S, W, & V RISER
 P2.5 NO SCALE, SCHEMATIC ONLY



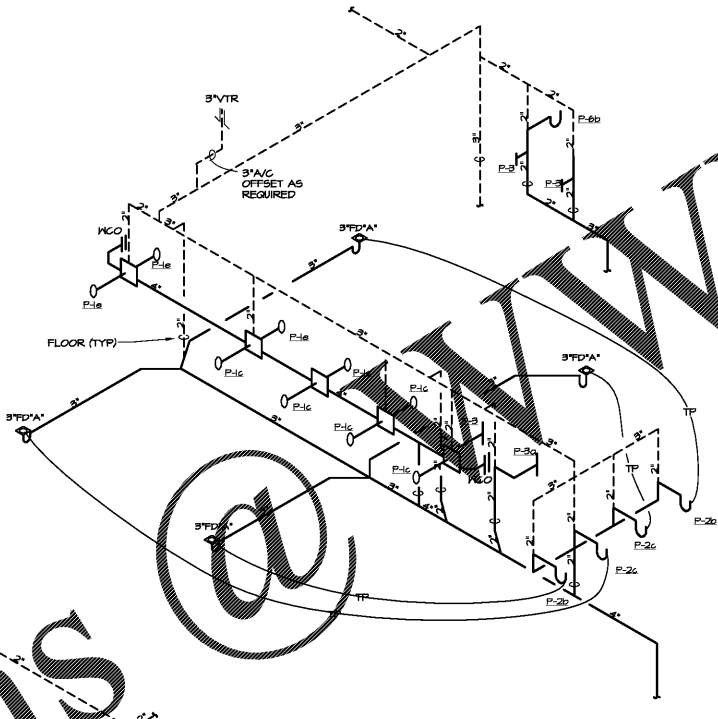
9 SW, & V PLAN
 P2.5 SCALE: 1/4"=1'-0"



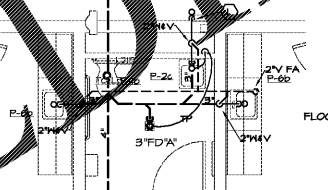
10 S, W, & V RISER
 P2.5 NO SCALE, SCHEMATIC ONLY



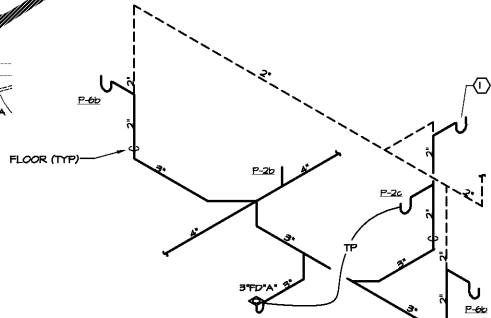
3 SW, & V PLAN
 P2.5 SCALE: 1/4"=1'-0"



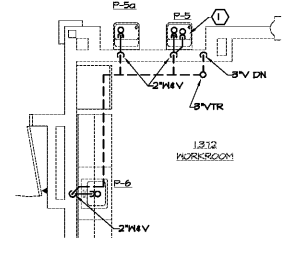
4 S, W, & V RISER
 P2.5 NO SCALE, SCHEMATIC ONLY



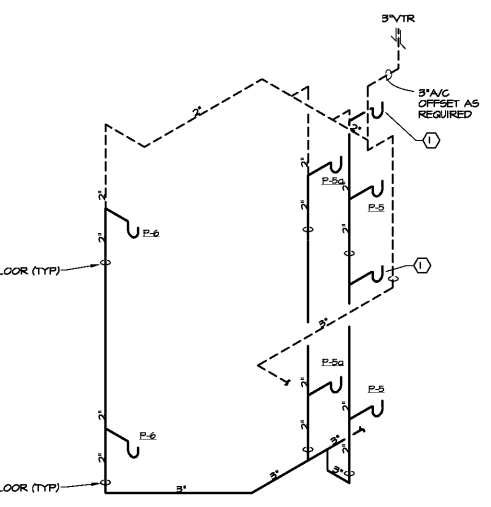
11 SW, & V PLAN
 P2.5 SCALE: 1/4"=1'-0"



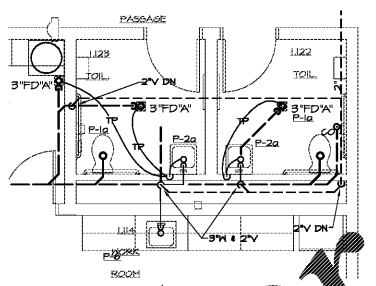
12 S, W, & V RISER
 P2.5 NO SCALE, SCHEMATIC ONLY



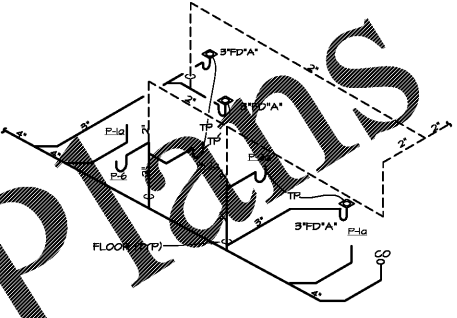
13 SW, & V PLAN
 P2.5 SCALE: 1/4"=1'-0"



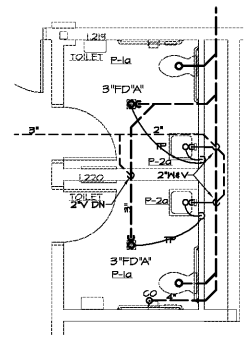
15 S, W, & V RISER
 P2.7 NO SCALE, SCHEMATIC ONLY



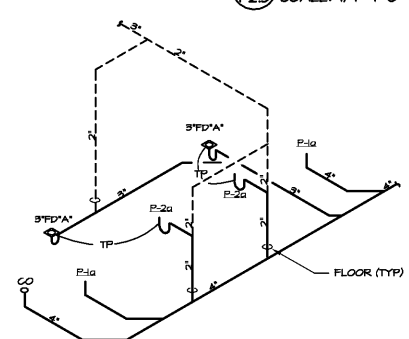
5 SW, & V PLAN
 P2.5 SCALE: 1/4"=1'-0"



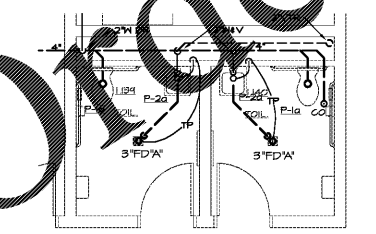
6 S, W, & V RISER
 P2.5 NO SCALE, SCHEMATIC ONLY



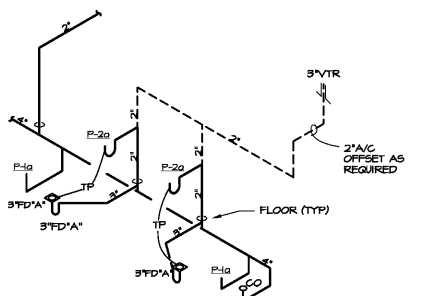
16 SW, & V PLAN
 P2.5 SCALE: 1/4"=1'-0"



17 S, W, & V RISER
 P2.5 NO SCALE, SCHEMATIC ONLY



7 SW, & V PLAN
 P2.5 SCALE: 1/4"=1'-0"



8 S, W, & V RISER
 P2.5 NO SCALE, SCHEMATIC ONLY



SPURLOCK & ASSOCIATES, INC.
 consulting engineers
 2970 Clairmont Rd., Suite 620 | Atlanta, GA 30329
 P: 404.433.0245 | F: 404.433.1756
 JOB NO. 1822

Order Plans

WWW.LDILLINE.COM