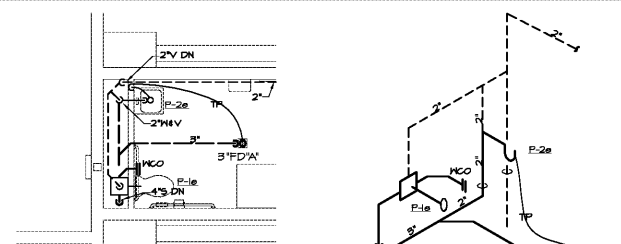


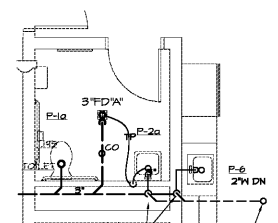
DRAWING ISSUE RECORD		
DATE:	REVISIONS:	NO.
1-1-18	ISSUE TO B'D	

HARMONY LELAND-CIT SCHOOL
 REPLACEMENT ELEMENTARY SCHOOL
 6526 FACTORY SCHOOLS RD., NW
 MABLETON, GA 30126
 FOR COBB COUNTY SCHOOL DISTRICT
 COBB COUNTY, GA
 CCSD PROJECT NO. A004 / UDE FACILITY CODE
 DATE: JULY 16, 2018
 JOB NO. B-L-2018-18
 DESIGNED BY: J.C.F.
 CHECKED BY: M.W.D.

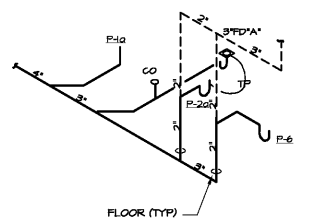
cunningham forhand matthews inc
 cunningham, forhand, matthews & moore, architects, inc. - 2011 manchester street, n.e. - atlanta, georgia 30324 - phone (404) 873-2152
 JOB NO. P2.4



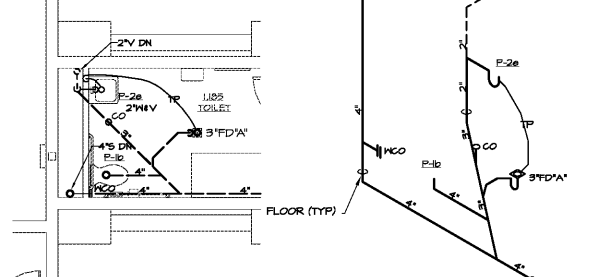
1 SW & V PLAN
 P2.4 SCALE: 1/4"=1'-0"



9 SW & V PLAN
 P2.4 SCALE: 1/4"=1'-0"

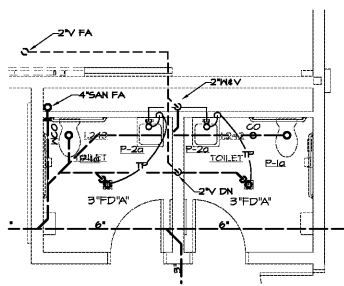


10 S. W. & V RISER
 P2.4 NO SCALE: SCHEMATIC ONLY

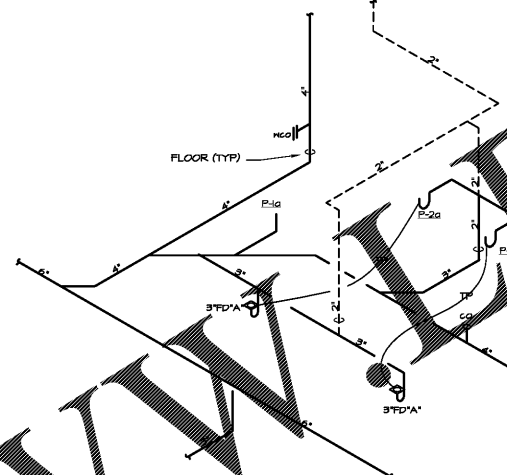


2 SW & V PLAN
 P2.4 SCALE: 1/4"=1'-0"

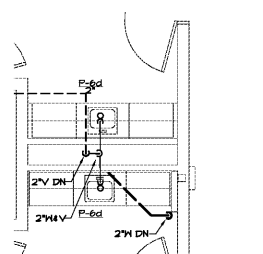
3 S. W. & V RISER
 P2.4 NO SCALE: SCHEMATIC ONLY



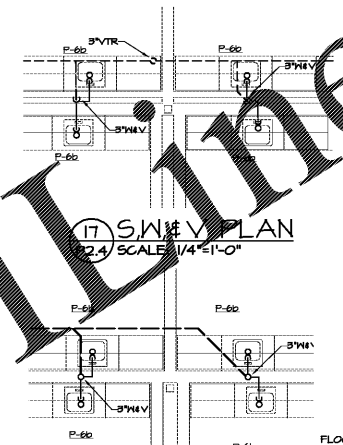
11 SW & V PLAN
 P2.4 SCALE: 1/4"=1'-0"



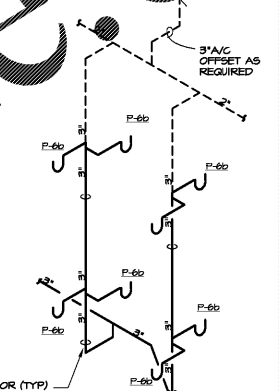
12 S. W. & V RISER
 P2.4 NO SCALE: SCHEMATIC ONLY



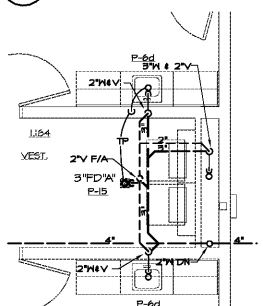
4 SW & V PLAN
 P2.4 SCALE: 1/4"=1'-0"



17 SW & V PLAN
 P2.4 SCALE: 1/4"=1'-0"

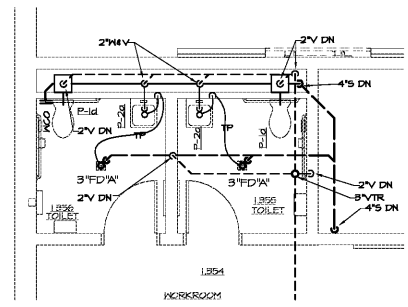


19 S. W. & V RISER
 P2.4 NO SCALE: SCHEMATIC ONLY

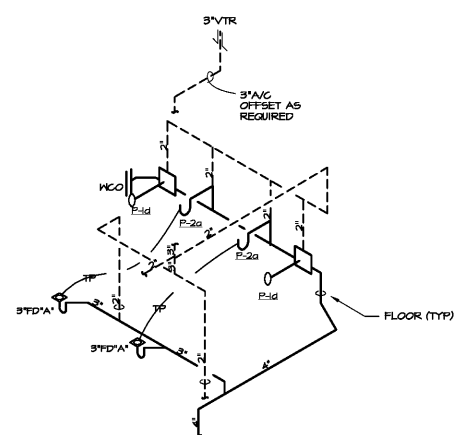


5 SW & V PLAN
 P2.4 SCALE: 1/4"=1'-0"

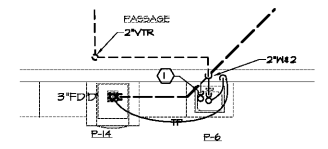
6 S. W. & V RISER
 P2.4 NO SCALE: SCHEMATIC ONLY



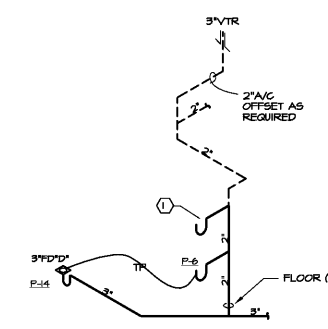
13 SW & V PLAN
 P2.4 SCALE: 1/4"=1'-0"



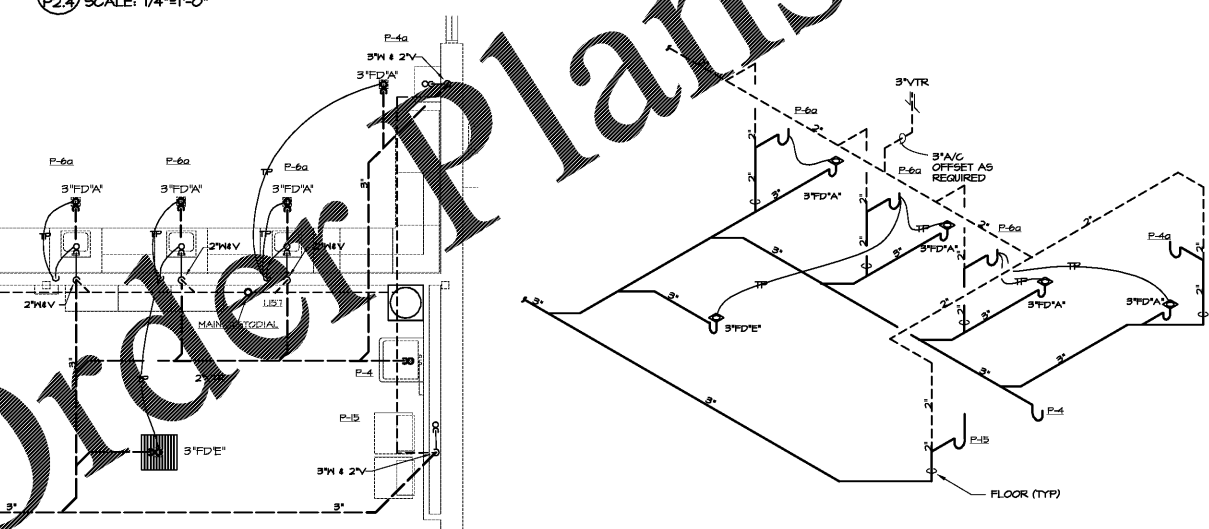
14 S. W. & V RISER
 P2.4 NO SCALE: SCHEMATIC ONLY



20 SW & V PLAN
 P2.4 SCALE: 1/4"=1'-0"

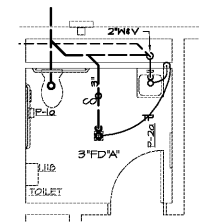


21 S. W. & V RISER
 P2.4 NO SCALE: SCHEMATIC ONLY

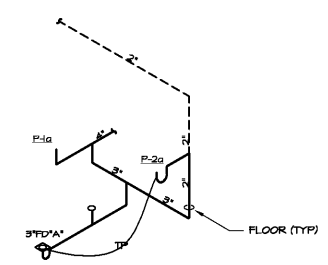


7 SW & V PLAN
 P2.4 SCALE: 1/4"=1'-0"

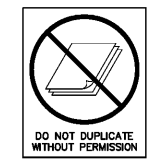
8 S. W. & V RISER
 P2.4 NO SCALE: SCHEMATIC ONLY



15 SW & V PLAN
 P2.4 SCALE: 1/4"=1'-0"



16 S. W. & V RISER
 P2.4 NO SCALE: SCHEMATIC ONLY



SPURLOCK & ASSOCIATES, INC.
 consulting engineers
 2970 Clairmont Rd., Suite 420 | Atlanta, GA 30339
 P: 404.433.0245 | F: 404.433.1756
 JOB NO. 1822

Order Plans @ WWW.DLINE.COM