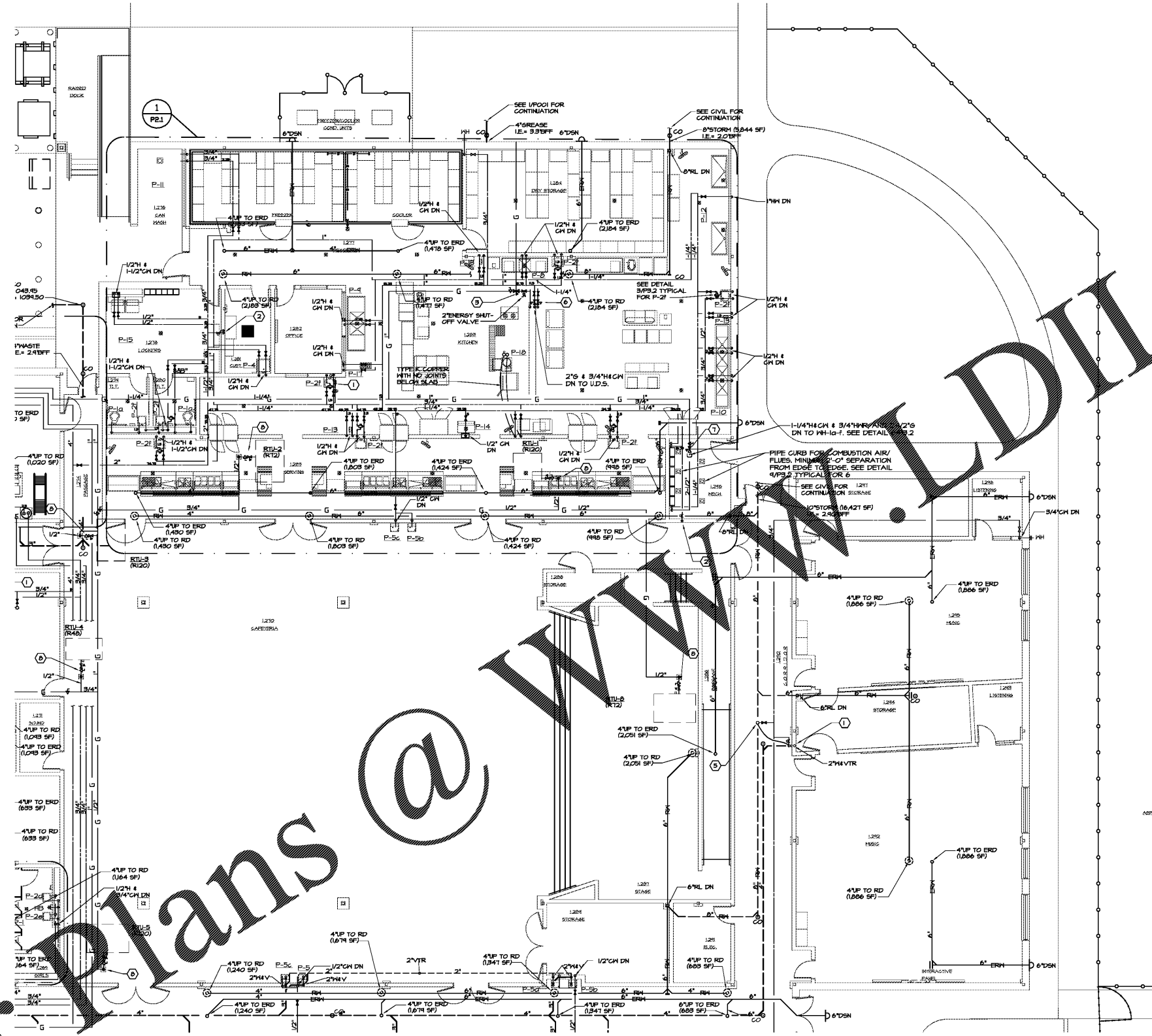
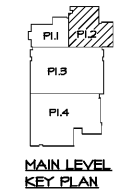


DRAWING ISSUE RECORD		
DATE	REVISIONS	NO.
11-1-18	ISSUE TO B'D	



① MAIN LEVEL PARTIAL PLAN - PLUMBING
1/8"=1'-0"



MAIN LEVEL KEY PLAN



SPURLOCK & ASSOCIATES, INC.
consulting engineers
2970 Clairmont Rd., Suite 420 | Atlanta, GA 30329
P: 404.433.0245 | F: 404.433.1736
JOB NO. 1822

HARMONY LELAND-CIT SCHOOL
REPLACEMENT ELEMENTARY SCHOOL

6526 FACTORY SQUARES RD., NW
MABLETON, GA 30126
FOR COBB COUNTY SCHOOL DISTRICT
COBB COUNTY, GA
CCSD PROJECT NO. ADD / DDE FACILITY CODE

DATE: JULY 16, 2018
JOB NO.: B-L-1507-1B
DRAWN BY: J.C.F.
CHECKED BY: M.W.D.

cunningham, forehand, matthews & moore

cunningham, forehand, matthews & moore, architects, inc. - atlanta, georgia 30324 - phone (404) 873-2152