

DATE	REVISIONS	NO.
11-1-18	ISSUE TO B'D	

HARMONY ELEMENTARY SCHOOL
 REPLACEMENT ELEMENTARY SCHOOL
 6526 FACTORY SQUARES RD, NW
 MABLETON, GA 30126
 FOR COBB COUNTY SCHOOL DISTRICT
 COBB COUNTY, GA
 CCSD PROJECT No. ADD / DDE FACILITY CODE
 DATE: JULY 16, 2018
 JOB NO. B-L-1909-18
 DWG. BY J.C.F.

GENERAL NOTES: (ALL PLUMBING SHEETS)

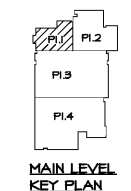
- CONTRACTOR SHALL NOTIFY ENGINEER IN WRITING OF ANY DISCREPANCIES OF EXISTING CONDITIONS FROM THAT SHOWN ON PLANS OR OF ANY CONDITION PROHIBITING WORK TO BE INSTALLED AS SHOWN ON PLANS BEFORE WORK IS BEGUN.
- DO NOT SCALE DRAWINGS FOR LOCATIONS OF PLUMBING FIXTURES OR ROOF DRAINS, EMERGENCY ROOF DRAINS, AND FLOOR DRAINS. SEE ARCHITECTURAL DRAWINGS FOR DIMENSIONS.
- VENTS THRU ROOF MUST BE LOCATED 10' OR MORE FROM OUTSIDE AIR INTAKES ON HVAC SYSTEM AS PER CODE. SEE HVAC DRAWINGS FOR LOCATION OF INTAKES. PROVIDE OFFSET VENTS AS NECESSARY TO MAINTAIN CLEARANCE.
- WHERE 2" VTR IS SHOWN ON PLANS, EXTEND 2" TO BELLY ROOF, TRANSITION TO 3" VENT THRU ROOF TO ACCOMMODATE ROOF FLASHING.
- BEHIND PIPING SHALL NOT BE INSTALLED IN HVAC SERVICE CLEARANCES. SEE MECHANICAL SHEETS FOR COORDINATION BETWEEN THE TRADES IN CORRIDORS & BUILDING SECTIONS.
- WHERE INDICATED IN WALL CLOSETS, PIPING IS NOT CENTERED IN THE STALL, ROUGH-IN COLD WATER PIPE SO THAT FLUSH VALVE HANDLE WILL BE ON THE SIDE OF STALL.
- EXTERIOR CLEANOUTS SHALL BE LOCATED EQUIDISTANT FROM FACE OF EXTERIOR WALLS.
- INSTALL VALVES IN WATER LINES ABOVE CORRIDOR CEILING SO THE VALVE HANDLES ARE ACCESSIBLE. VALVES SHALL NOT BE MORE THAN 4'-0" ABOVE CEILING.
- COLD HOT WATER PIPING DROPS IN CHASES SHALL REMAIN FULL LINE SIZE THROUGHOUT CHASE (UNLESS NOTED OTHERWISE. SEE FIXTURE CONNECTION SCHEDULE FOR ALL BRANCH STUB-OUT PIPE SIZES. REFER TO TYPICAL WATER RISER DETAIL 1/PS.1).
- WHERE PIPING IS INSTALLED UNDER PERIMETER FOOTING, PIPING SHALL BE INSTALLED IN STEEL CASING. CASING SHALL EXTEND A MINIMUM OF 1'-0" BEYOND THE EDGE OF THE FOOTING.
- SEWER INVERTS SHOWN ARE REFERENCED FROM TOP OF FLOOR SLAB.
- CONFIRM INVERTS OF EXISTING SEWERS SHOWN ON THE DRAWINGS BEFORE INSTALLING ANY PIPING.
- PROVIDE AND INSTALL A WALL CLEANOUT AT THE BASE OF ALL WASTE, SANITARY, & STORM RISER STACKS. WALL CLEANOUT COVER SHALL BE LOCATED IN ORDER OF PREFERENCE: UNOCCUPIED SPACE/ RESTROOM, CLASSROOM/ OFFICE, CORRIDOR.
- RAINFALL PIPE SIZING IS BASED ON A 4" RAINFALL RATE. PIPING SHALL BE RUN AT ITS SLOPE, UNLESS NOTED OTHERWISE FOR INCREASED PIPE CARRY CAPACITY IN ACCORDANCE WITH THE IPC TABLES.
- THE EXISTING PLUMBING EQUIPMENT AND PIPING HAS BEEN DRAIN FROM AS-BUILT DRAWINGS. ACTUAL LOCATIONS AND SIZES MAY VARY. CONTRACTOR SHALL FIELD VERIFY SIZES AND LOCATION.
- CONTRACTOR SHALL COORDINATE ROUTING OF EXPOSED PIPING WITH ARCHITECT PRIOR TO INSTALLATION.
- WHERE STRUCTURAL BEAMS PREVENT PIPING FROM TRANSITIONING BETWEEN FLOORS, SEE DETAIL 5/PS.1 FOR OFFSET DETAIL.
- ALL PLUMBING FIXTURES SHALL BE HIGH EFFICIENCY PER 2014 GA AMENDMENTS TO THE IPC 2012 ADDITION, SECTION 303.11.

FIRE MARSHAL NOTES: (ALL PLUMBING SHEETS)

- ALL PENETRATIONS THROUGH FIRE RATED WALLS AND FLOORS SHALL BE FIRE STOPPED WITH 3M FIRE BARRIER OR EQUAL PRODUCT MEETING UL 1478 OR ASTM E84 FIRE RATING IN ACCORDANCE WITH ARTICLE 900-21 OF THE NATIONAL ELECTRICAL CODE. SEE ARCHITECTURAL FOR DETAILS.
- SEE MECH DRGSS FOR PORTIONS OF THE BUILDING WITH RETURN AIR FLENUMS. ALL MATERIALS EXPOSED WITHIN FLENUMS ARE REQUIRED TO BE NONCOMBUSTIBLE OR SHALL HAVE A FLAME SPREAD INDEX OF NOT MORE THAN 25 AND A SMOKE DEVELOPED INDEX OF NOT MORE THAN 50 AS DETERMINED IN ACCORDANCE WITH ASTM E84.
- A COMPLETE SET OF SPRINKLER SHOP DRAWINGS SHALL BE SUBMITTED TO THE COUNTY FIRE MARSHAL'S OFFICE, APPROVED, AND A PERMIT OBTAINED BEFORE ANY SPRINKLER WORK IS INSTALLED.

REFERENCED NOTES: (ALL PLUMBING SHEETS)

- CONDENSATE DRAIN WITH TRAP PRIMER ABOVE CEILING. SEE DETAIL 8/PS.1. INSTALL ON 2" VTR STACK IN WALL/CHASE - UNLESS SHOWN/NOTED OTHERWISE, EXTEND 2" VTR TO 3" VTR, OFFSETTING ABOVE CEILING AS REQUIRED. TYPICAL.
- TRAP PRIMER ABOVE CEILING. SEE DETAIL 4/PS.1.
- GAS PRESSURE REGULATOR, SENSUS 248 - 750 CFH, 2 PSI INLET PRESSURE, 7" M.C. OUTLET PRESSURE. ROUTE FULL SIZE GAS VENT TO EXTERIOR.
- 1" GN DN TO COOLING TOWER FILL SOLENOID VALVE - SEE MECHANICAL. INSTALL 1" SHUTOFF VALVE 4'-0" ABOVE FINISHED FLOOR.
- 3/4" GN UP TO ROOF HYDRANT. SEE DETAIL 1/PS.2.
- INSTALL MATTS 2238B 3/4" PTV IN HOT AND COLD WATER LINE. SET PRV @ 40 PSI.
- GAS PRESSURE REGULATOR, SENSUS 248 - 1194 CFH, 2 PSI INLET PRESSURE, 7" M.C. OUTLET PRESSURE. ROUTE FULL SIZE GAS VENT TO EXTERIOR.
- SEE DETAIL 1/PS.1 FOR GAS CONNECTION.

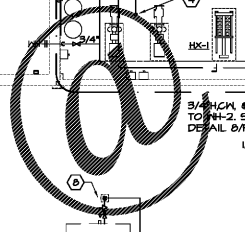


SPURLOCK & ASSOCIATES, INC.
 consulting engineers
 2970 Clairmont Rd., Suite 620 | Atlanta, GA 30329
 P: 404.633.0245 | F: 404.633.1756
 JOB NO. 1822

cunningham forhand matthews moore
 cunningham, forhand, matthews & moore, architects, inc. - 2011 manchester street, n. e. - atlanta, georgia 30324 - phone (404) 873-2152

1 MAIN LEVEL PARTIAL PLAN - PLUMBING
 P1.1 1/8"=1'-0"

Order Plans



www.lidn.com