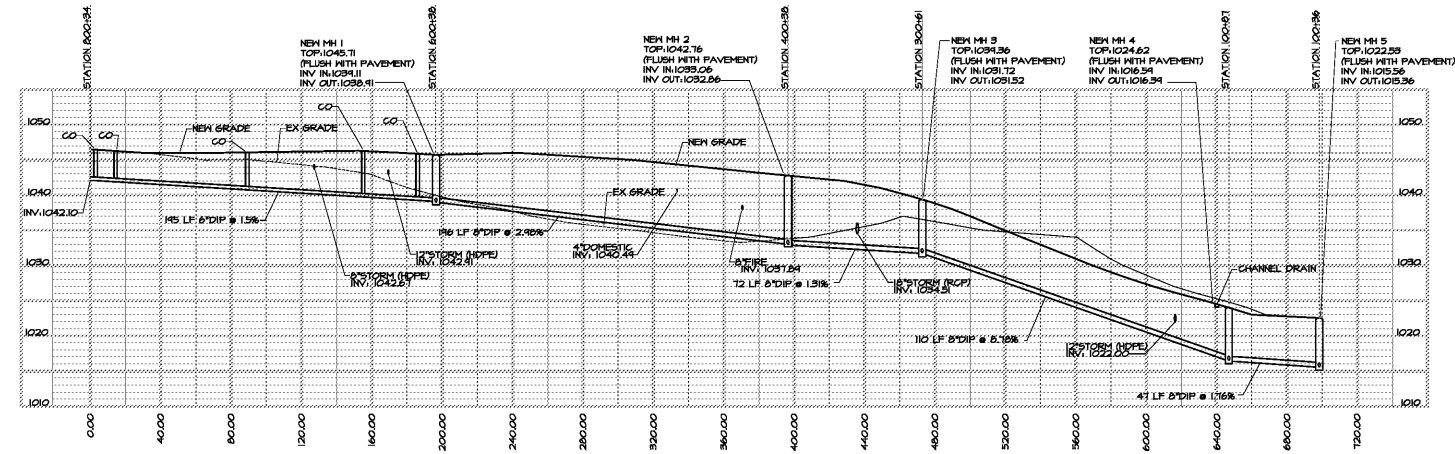
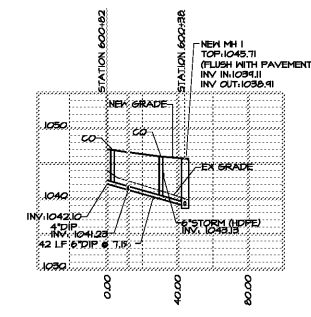


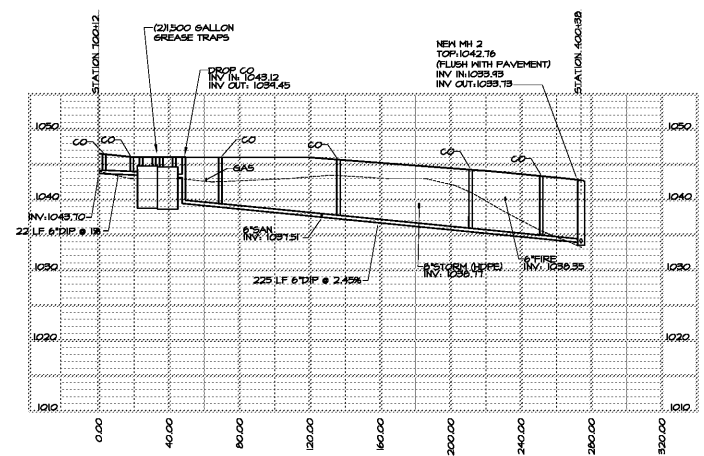
DATE	REVISIONS	NO.
1-1-16	ISSUE TO B'D	



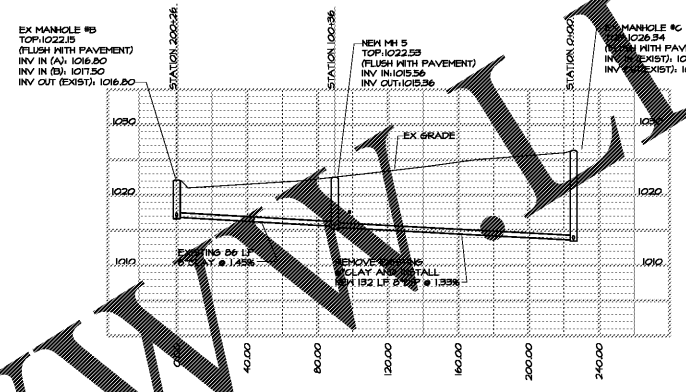
1 S.S. PROFILE - LATERAL A, TO NEW MH #5
 PO3 HORIZONTAL SCALE: 1" = 40' - 0"
 VERTICAL SCALE: 1" = 10' - 0"



2 S.S. PROFILE - LATERAL B TO NEW MH #1
 PO3 HORIZONTAL SCALE: 1" = 40' - 0"
 VERTICAL SCALE: 1" = 10' - 0"

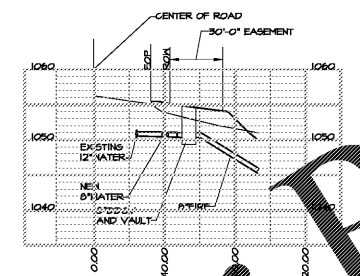


3 S.S. PROFILE - LATERAL C TO NEW MH #2
 PO3 HORIZONTAL SCALE: 1" = 40' - 0"
 VERTICAL SCALE: 1" = 10' - 0"

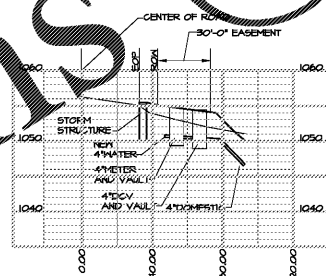


4 S.S. PROFILE - EXISTING MH B, NEW MH #5, EXISTING MH C
 PO3 HORIZONTAL SCALE: 1" = 40' - 0"
 VERTICAL SCALE: 1" = 10' - 0"

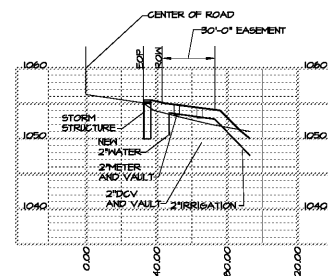
EXISTING SEWER MUST REMAIN IN SERVICE UNTIL PROPOSED NEW LINE IS INSTALLED AND ACCEPTED BY INSPECTION



5 FINE DCV VAULT PROFILE
 PO3 HORIZONTAL SCALE: 1" = 40' - 0"
 VERTICAL SCALE: 1" = 10' - 0"



6 DOMESTIC WATER METER & DCV VAULT PROFILE
 PO3 HORIZONTAL SCALE: 1" = 40' - 0"
 VERTICAL SCALE: 1" = 10' - 0"



7 IRRIGATION WATER METER & DCV VAULT PROFILE
 PO3 HORIZONTAL SCALE: 1" = 40' - 0"
 VERTICAL SCALE: 1" = 10' - 0"

Order Plans @ www.dline.com

HARMONY LELAND-CIT SCHOOL
 REPLACEMENT ELEMENTARY SCHOOL
 6526 FACTORY SCHOOLS RD., NW
 MABLETON, GA 30126
 FOR COBB COUNTY SCHOOL DISTRICT
 COBB COUNTY, GA
 CCS3 PROJECT NO. A004 / USE FACILITY CODE
 DATE: JULY 16, 2016
 JOB NO. B-L-1567-1B
 DES. BY: J.C.F.

cunningham, forehand, matthews & moore, architects, inc. - atlanta, georgia 30324 - phone (404) 873-2152

IF YOU ARE GEORGIA...
 CALL US FIRST!
 UTILITIES PROTECTION CENTER
 METRO ATLANTA STATE WIDE
 1 (770) 432-4334 1 (800) 368-7411
 IT'S THE LAW!



SPURLOCK & ASSOCIATES, INC.
 consulting engineers
 2970 Clairmont Rd., Suite 620 | Atlanta, GA 30329
 P: 404.433.0245 | F: 404.433.1756
 JOB NO. 1872