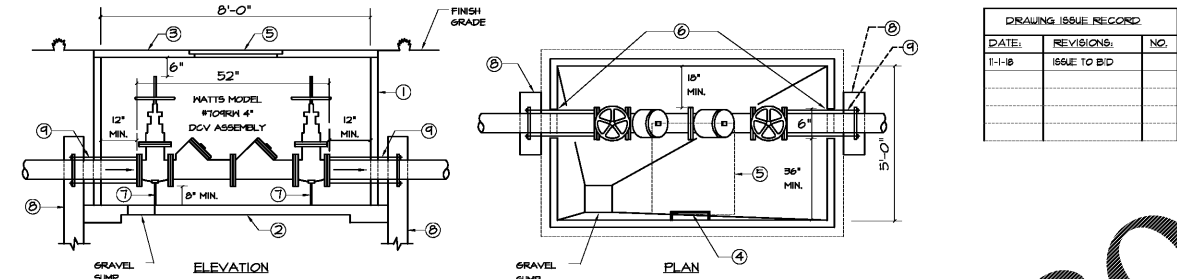


SITE PLUMBING LEGEND	
SYMBOL	DESCRIPTION
(Symbol)	SOIL OR WASTE ABOVE SLAB
(Symbol)	SOIL OR WASTE PIPING BELOW SLAB OR GRADE
(Symbol)	COLD WATER PIPING
(Symbol)	RAIN WATER BELOW SLAB OR GRADE
(Symbol)	PIPING TO BE REMOVED
(Symbol)	GAS PIPING
(Symbol)	GAS PIPING BELOW GRADE
(Symbol)	HIGH PRESSURE GAS PIPING
(Symbol)	IRRIGATION
(Symbol)	GATE VALVE OR BALL VALVE
(Symbol)	CHECK VALVE
(Symbol)	PRESSURE REDUCING VALVE
(Symbol)	GAS COCK
(Symbol)	POST INDICATING VALVE
(Symbol)	FLOOR DRAIN, "A" INDICATES TYPE
(Symbol)	CLEANOUT IN FLOOR SLAB OR FINISH GRADE
(Symbol)	PIPE TURNING UP
(Symbol)	PIPE TURNING DOWN
(Symbol)	TEE CONNECTION IN SIDE OF PIPE
(Symbol)	TEE CONNECTION IN TOP OF PIPE
(Symbol)	TEE CONNECTION IN TOP OF PIPE
(Symbol)	UNION
(Symbol)	END CAP
(Symbol)	POST INDICATING VALVE
(Symbol)	RAIN WATER PIPING
(Symbol)	FIRE DEPARTMENT CONNECTION
(Symbol)	FIRE LINE
(Symbol)	FIRE HYDRANT
(Symbol)	INV. / I.E. INVERT ELEVATION
(Symbol)	EXIST. / EX. EXISTING
(Symbol)	DN DOWN
(Symbol)	GO CLEAN OUT
(Symbol)	EGO EXISTING CLEAN OUT
(Symbol)	DFP/ B/F BELOW FINISHED FLOOR / BELOW FLOOR
(Symbol)	B/S BELOW GRADE
(Symbol)	H WASTE
(Symbol)	CH COLD WATER
(Symbol)	ROV/RH RIGHT OF WAY

DETAIL 02713-23
COBB COUNTY WATER SYSTEM
METER INSTALLATION INFORMATION

SEPTEMBER 22, 2008

ITEM NO.	DESCRIPTION	QUANTITY	UNIT	PRICE	TOTAL
1	METER	1	EA	100.00	100.00
2	PIPE	10	LF	10.00	100.00
3	VALVE	1	EA	200.00	200.00
4	CONCRETE	1	CU YD	100.00	100.00
5	GRAVEL	1	CU YD	50.00	50.00
6	LABOR	1	HR	100.00	100.00
7	TRUCK	1	HR	100.00	100.00
8	PERMITS	1	EA	100.00	100.00
9	INSULATION	1	LF	10.00	10.00
10	PAINT	1	EA	10.00	10.00
11	TESTING	1	EA	100.00	100.00
12	OTHER	1	EA	10.00	10.00
13	TOTAL				1000.00



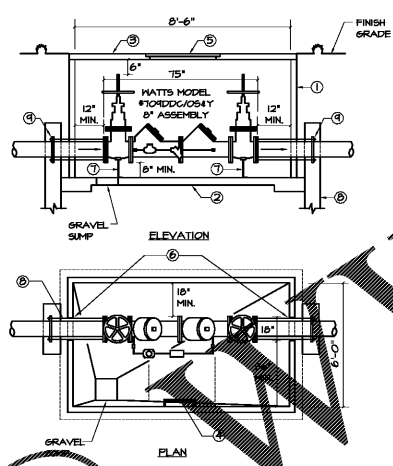
VAULT SPECIFICATIONS FOR VPO2

- Vault shall be precasted reinforced concrete.
- Vault bottom 4" poured concrete slab, sloped to gravel sump. Slab to be poured on 4" of No. 57 compacted stone.
- Vault top shall be reinforced concrete with 36" x 36" access opening, offset to one side.
- Access ladder downed to well and centered at access.
- Hand cover: Bilco - Aluminum Single Model #J-4L or equal.
- Vault inlet/outlet pipe openings to be sealed with grout or mortar. Pipe must not support vault.
- BRP device to be supported on two (2) points with pipe.
- Thrust blocking shall be in accordance with Cobb County Requirements.
- Thrust the rods shall be bituminous coated and all pipe and fittings of ductile iron.
- Vault to be installed on owner's private property provided for by a 30 ft. x 30 ft. easement.
- All material to be furnished by the contractor.

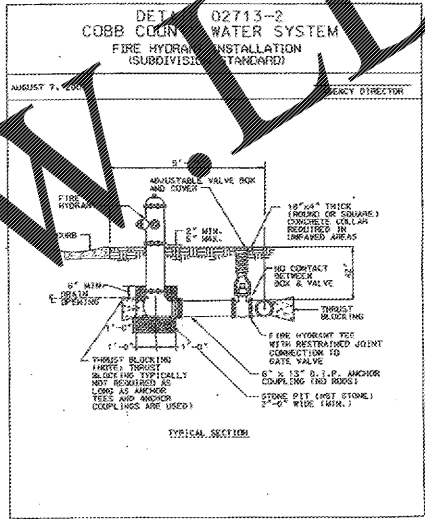
① DOMESTIC WATER DOUBLE CHECK VALVE AND VAULT
PO2 NO SCALE - SCHEMATIC ONLY (SHOWING MINIMUM CLEARANCE DIMENS.)

GREASE TRAP CALCULATIONS (PER COBB COUNTY STANDARDS)
GALLONS = SEATS X 2.5 HOURS/12 X LOADING FACTOR
116 SEATS, 25 HOURS LOADING FACTOR = 1,174 GALLONS
SEATS X 20 = 2,328 SEATS X 1 = 1,734 GALLONS
1100 1500 GALLON GREASE TRAPS

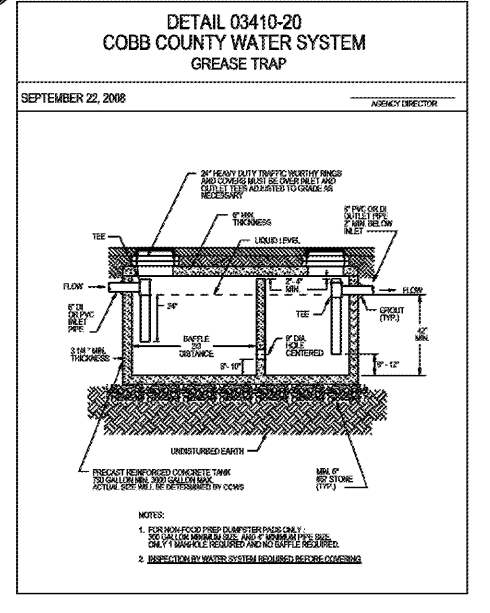
② COBB COUNTY METER INFORMATION
PO2 NO SCALE - SCHEMATIC ONLY (SHOWING MINIMUM CLEARANCE DIMENS.)



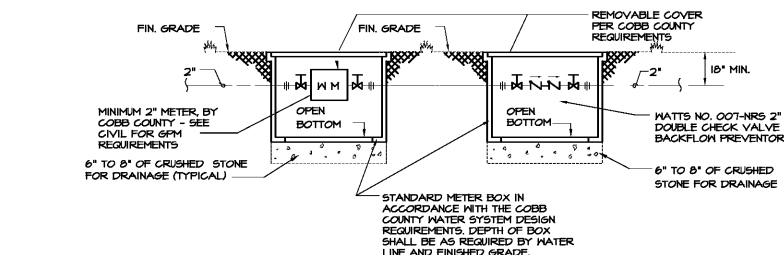
③ FIRE LINE VAULT & DOUBLE DETECTOR CHECK VALVE DETAIL
PO2 NO SCALE - SCHEMATIC ONLY (SHOWING MINIMUM CLEARANCE DIMENS.)



COBB COUNTY
④ FIRE HYDRANT INSTALLATION
PO2 NO SCALE - SCHEMATIC ONLY



② GREASE TRAP DETAIL - COBB COUNTY
PO2 NO SCALE - SCHEMATIC ONLY (SHOWING MINIMUM CLEARANCE DIMENS.)



⑦ IRRIGATION METER & BACKFLOW PREVENTOR
PO2 NO SCALE - SCHEMATIC ONLY

DETAIL 02713-12(A)
COBB COUNTY WATER SYSTEM
THRUST BLOCKING

SEPTEMBER 22, 2008

DETAIL 02713-12(B)
COBB COUNTY WATER SYSTEM
THRUST BLOCK DIMENSIONS

SEPTEMBER 22, 2008

ITEM NO.	DESCRIPTION	QUANTITY	UNIT	PRICE	TOTAL
1	THRUST BLOCK	1	EA	100.00	100.00
2	PIPE	10	LF	10.00	100.00
3	CONCRETE	1	CU YD	100.00	100.00
4	LABOR	1	HR	100.00	100.00
5	TRUCK	1	HR	100.00	100.00
6	PERMITS	1	EA	100.00	100.00
7	INSULATION	1	LF	10.00	10.00
8	PAINT	1	EA	10.00	10.00
9	TESTING	1	EA	100.00	100.00
10	OTHER	1	EA	10.00	10.00
11	TOTAL				1000.00

DETAIL 02713-12(C)
COBB COUNTY WATER SYSTEM
THRUST RESTRAINT CONCRETE COLLAR WITH RODDING SYSTEM

SEPTEMBER 22, 2008

ITEM NO.	DESCRIPTION	QUANTITY	UNIT	PRICE	TOTAL
1	THRUST RESTRAINT COLLAR	1	EA	100.00	100.00
2	PIPE	10	LF	10.00	100.00
3	CONCRETE	1	CU YD	100.00	100.00
4	LABOR	1	HR	100.00	100.00
5	TRUCK	1	HR	100.00	100.00
6	PERMITS	1	EA	100.00	100.00
7	INSULATION	1	LF	10.00	10.00
8	PAINT	1	EA	10.00	10.00
9	TESTING	1	EA	100.00	100.00
10	OTHER	1	EA	10.00	10.00
11	TOTAL				1000.00

CLIFF'S FIRE EXTINGUISHER CO., INC.

Fire Hydrant Flow Test Report

Cobb County Schools - MAINTENANCE

Station: [Address]

Flow Test Date: 6/20/08

Static Pressure: 60 PSI

Residual Pressure: 60 PSI

Flow: 1375 GPM

Flow Test Conducted by: CLIFF'S FIRE PROTECTION CO., INC.

Water Flow Test Date: 6/20/08

Static Pressure: 60 PSI

Pitot Reading: 60 PSI

Residual Pressure: 60 PSI

Flow: 1375 GPM

Flow Test Conducted by: CLIFF'S FIRE PROTECTION CO., INC.

24HR EMERGENCY CONTACT
LARRY WALL
COBB COUNTY SCHOOLS
(770) 590-4518

IF YOU USE GEORGIA...
CALL US FIRST!
UTILITIES PROTECTION CENTER
METRO ATLANTA
STATE WIDE
(770) 432-4334
(800) 382-7411

SPURLOCK & ASSOCIATES, INC.
consulting engineers
2970 Clairmont Rd., Suite 620 | Atlanta, GA 30339
P: 404.433.0245 | F: 404.433.1756
JOB NO. 852

www.DIYline.com

HARMONY LELAND-CIT SCHOOL
REPLACEMENT ELEMENTARY SCHOOL

6526 FACTORY SCHOOLS RD., NW
MABLETON, GA 30268
FOR COBB COUNTY SCHOOL DISTRICT
COBB COUNTY, GA

CCSD PROJECT NO. A004 / DUE FACILITY CODE
JOB NO. B-L-069-18
DATE: JULY 6, 2018
DESIGNED BY: J.C.F.
DRAWN BY: J.W.D.

cunningham, forehand, mathews & moore, architects, inc. - 2011 manchester street, n.e. - atlanta, georgia 30324 - phone (404) 873-2152

PO.2