

DRAWING ISSUE RECORD		
DATE	REVISIONS	NO.
11-1-18	ISSUE TO BID	

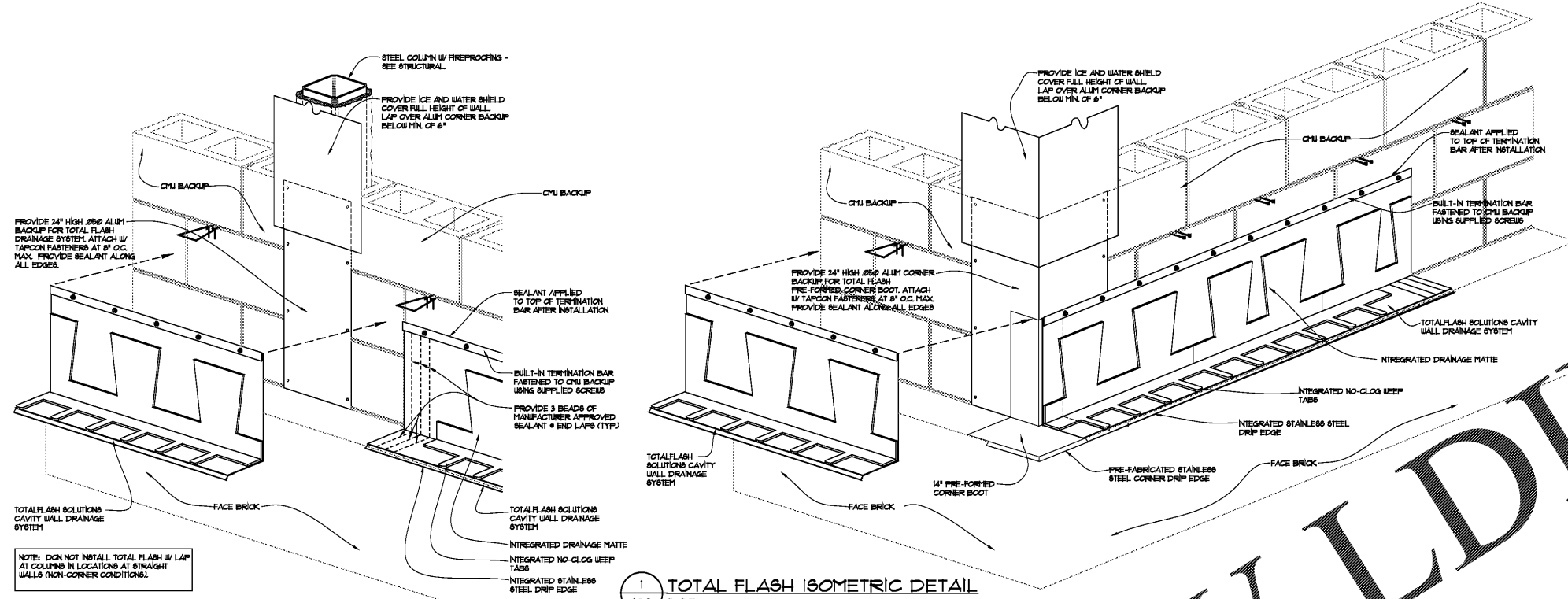


HARMONY LELAND-COOPER  
REPLACEMENT ELEMENTARY SCHOOL  
63246 FACTORY SHOALS ROAD  
HABLETON, GA 30216  
FOR COBB COUNTY SCHOOL DISTRICT  
C-10-1824 / JOE FACILITY SIDE #188

DATE: JUL 16, 2019  
JOB NO: 18-1520-18  
DRAWN BY: AK

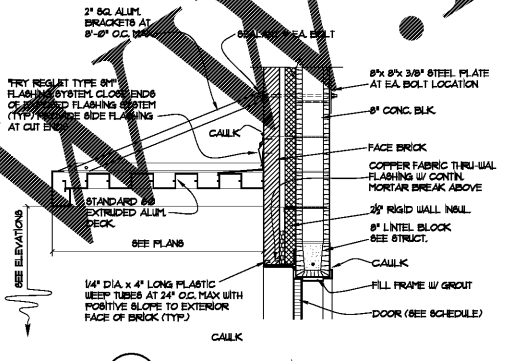
cunningham, forehand, matthews & moore, architects, inc. - 2011 manchester street, n.e. - atlanta, georgia 30324 - phone (404) 873-2152

cunningham forehand matthews moore

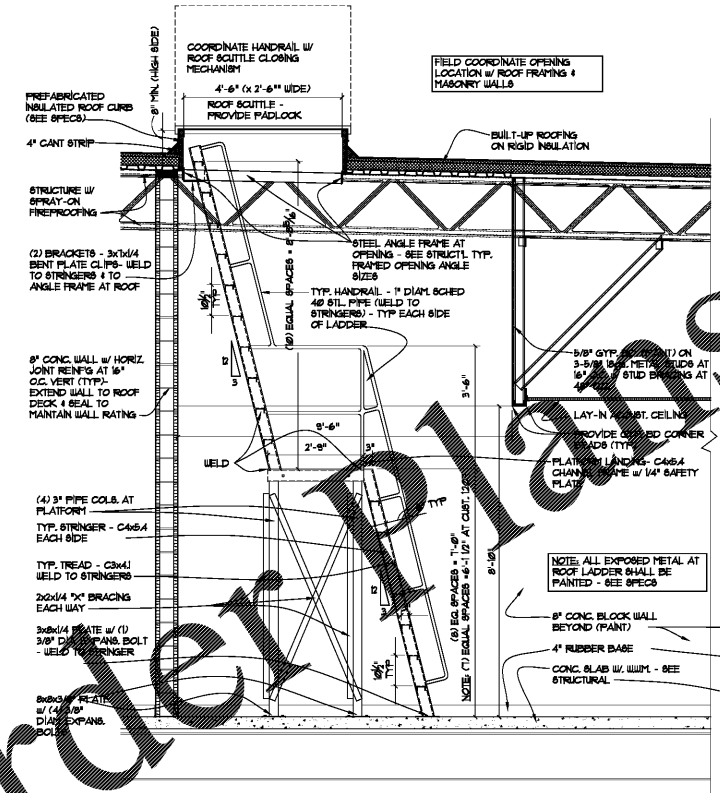


NOTE: DO NOT INSTALL TOTAL FLASH W/ LAP AT CORNERS IN LOCATIONS AT STRAIGHT WALLS (NON-CORNER CONDITIONS).

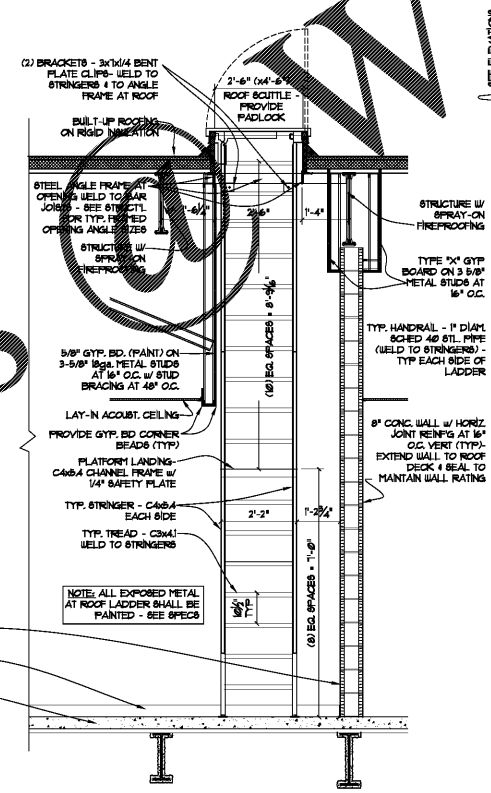
1 TOTAL FLASH ISOMETRIC DETAIL  
1/2" = 1'-0"



4 TYP. ALUMINUM DOOR CANOPY  
3/4" = 1'-0"



2 LONG SECTION THRU ROOF ACCESS LADDER AT STORAGE 1346  
1/2" = 1'-0"



3 CROSS SECTION THRU ROOF ACCESS LADDER AT STORAGE 1346  
1/2" = 1'-0"

