

DRAWING ISSUE RECORD		
DATE	REVISION	NO.
11-1-18	ISSUE TO BID	



HARVINY LELAND-CLAY SCHOOL
REPLACEMENT ELEMENTARY SCHOOL
 6326 FACTORY SQUARES RD.
 HAZLETON, GA 30756
 FOR COBBS COUNTY SCHOOL DISTRICT
 COBBS PROJECT NO. A684 / DOE FACILITY CODE 6188

DATE: JUL 16, 2019

JOB NO. SHL-1501-18

DATE: JUL 16, 2019

JOB NO. SHL-1501-18

DATE: JUL 16, 2019

JOB NO. SHL-1501-18

DATE: JUL 16, 2019

JOB NO. SHL-1501-18

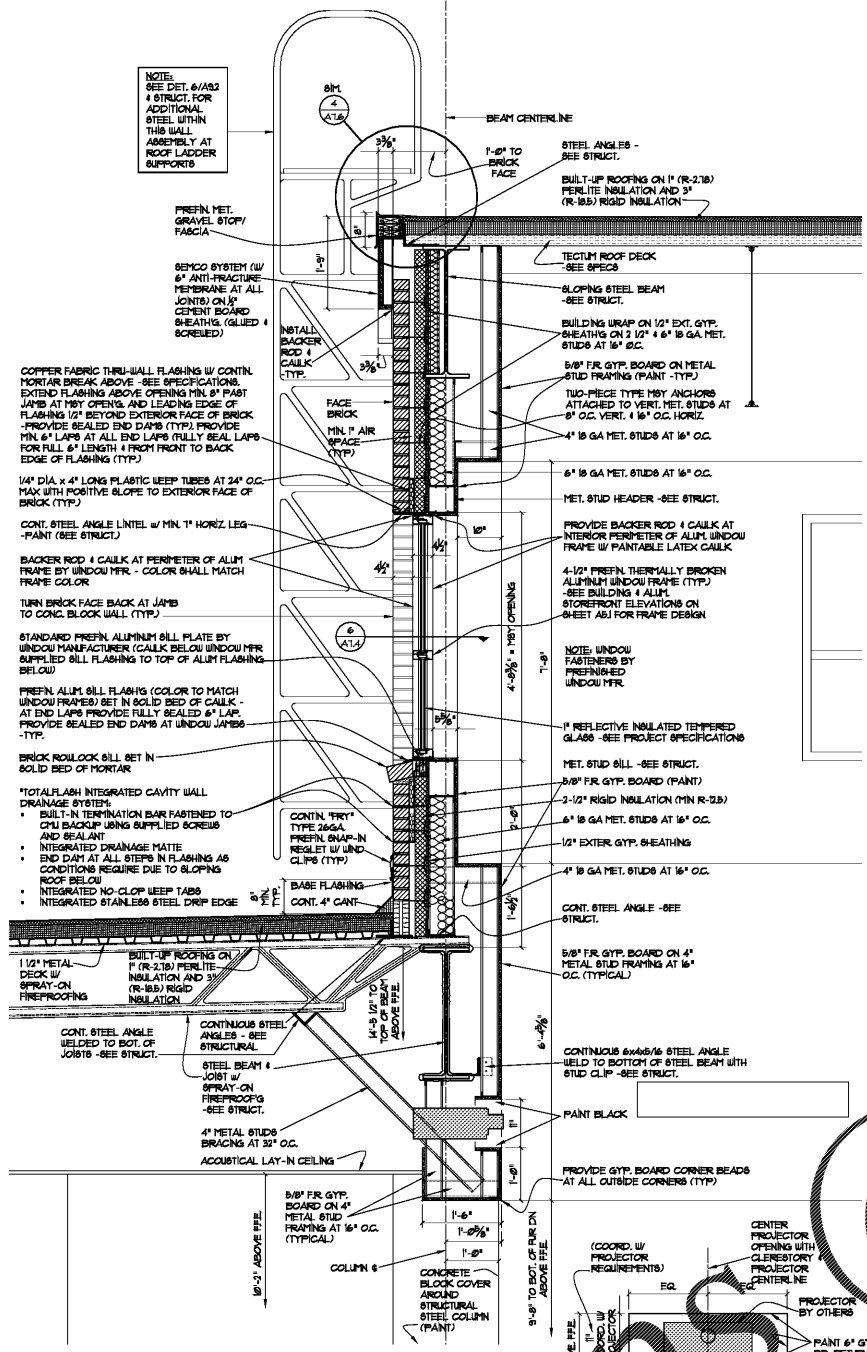
DATE: JUL 16, 2019

JOB NO. SHL-1501-18

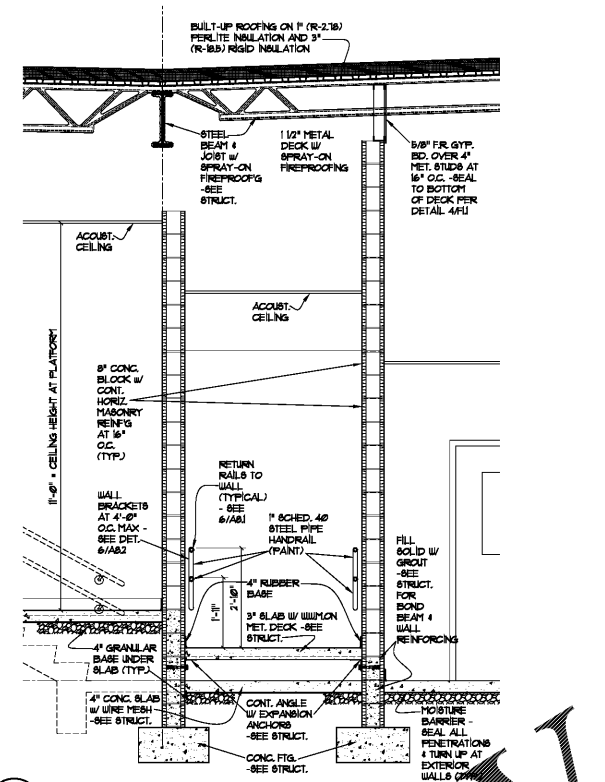
DATE: JUL 16, 2019

DATE: JUL 16, 2019

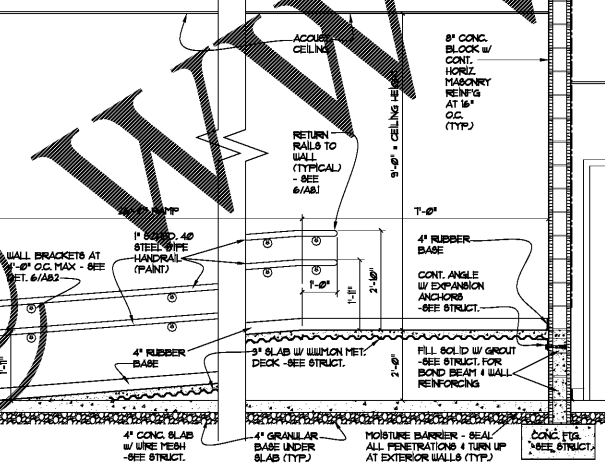
DATE: JUL 16, 2019



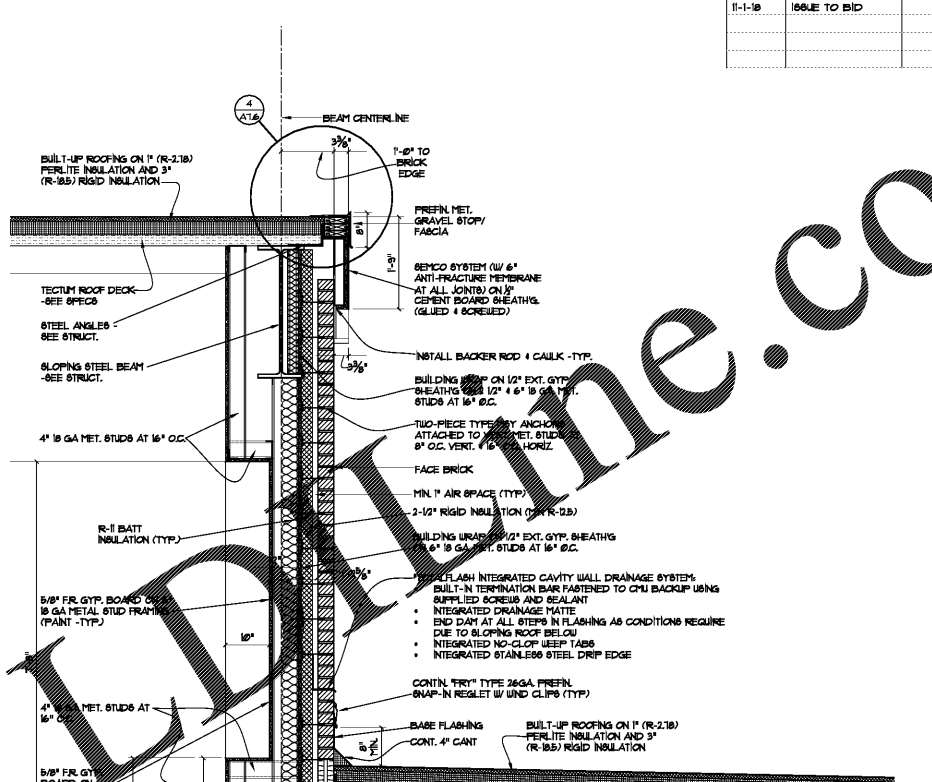
2 WALL SECTION
A1.9 1/2" = 1'-0"



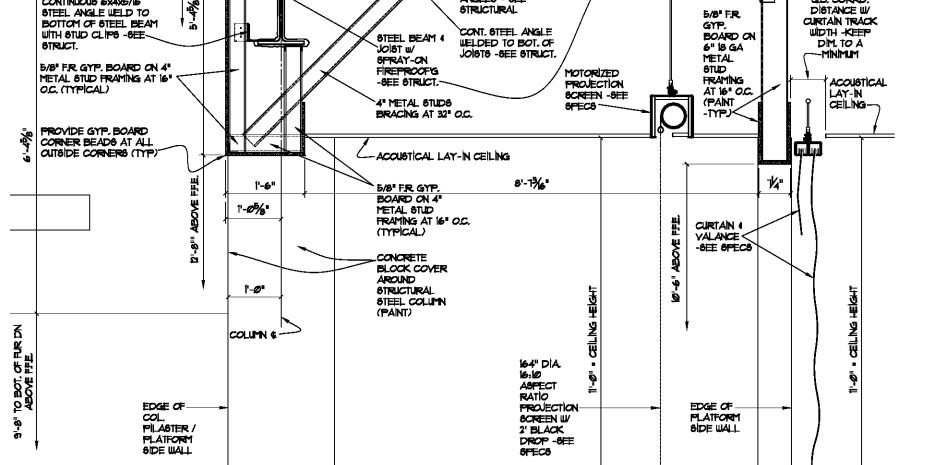
4 SECTION THRU RAMP AT PASSAGE #1286
A1.9 1/2" = 1'-0"



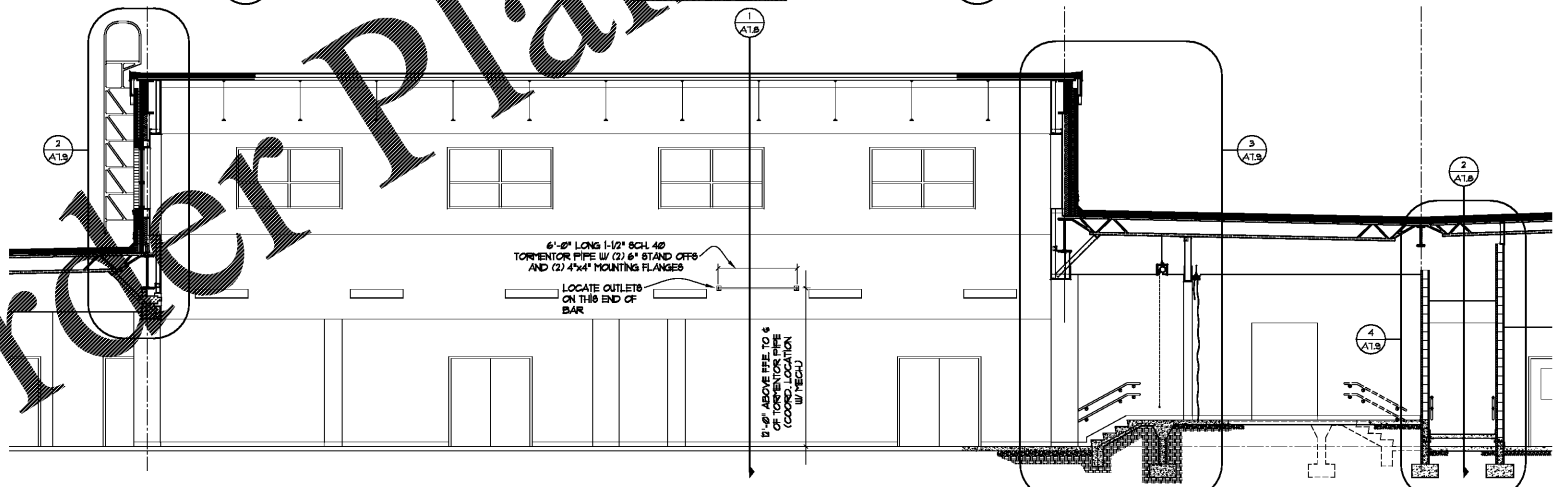
5 SECTION THRU RAMP AT PASSAGE #1286
A1.9 1/2" = 1'-0"



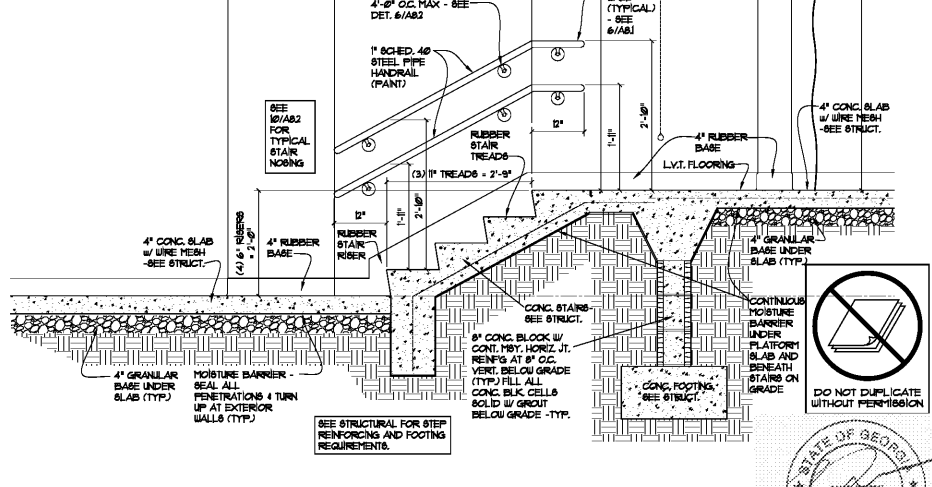
3 PARTIAL SECTION THRU PLATFORM #1281
A1.9 3/4" = 1'-0"



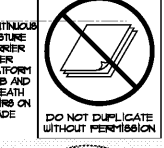
3 PARTIAL SECTION THRU PLATFORM #1281
A1.9 3/4" = 1'-0"



1 PARTIAL BUILDING SECTION THRU CAFETERIA & PLATFORM
A1.9 3/4" = 1'-0"



3 PARTIAL SECTION THRU PLATFORM #1281
A1.9 3/4" = 1'-0"



DO NOT DUPLICATE WITHOUT PERMISSION



Order Plans @ www.drawingline.com

cunningham, forehand, matthews & moore

cunningham, forehand, matthews & moore, architects, inc. - 2011 manchester street, n.e. - atlanta, georgia 30324 - phone (404) 873-2152