

DRAWING ISSUE RECORD		
DATE	REVISIONS	NO.
11-1-18	ISSUE TO BID	

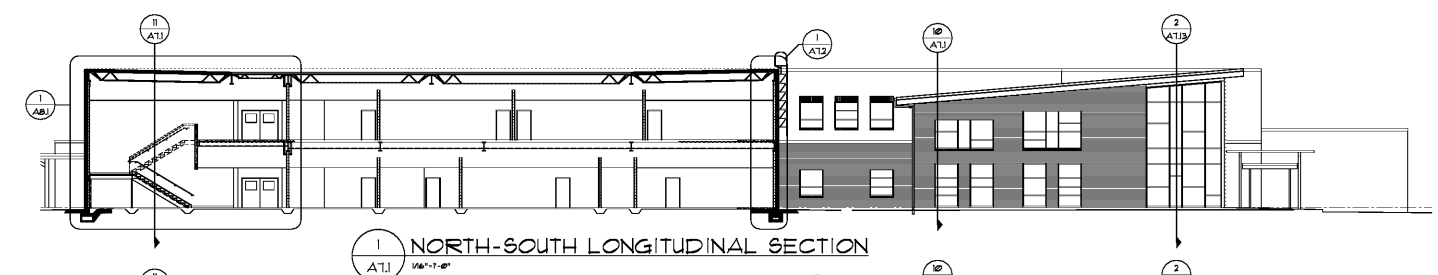
HARTONY LELAND-CLAY
REPLACEMENT ELEMENTARY SCHOOL
6316 FACTORY BOARDS RD.
MABLETON, GA 30156
FOR COBB COUNTY SCHOOL DISTRICT
CCSD PROJECT NO. A484 / DOE FACILITY CO. #888

DATE: JUL 16, 2018
JOB NO: 8-1-1501-18
DWG BY: AK

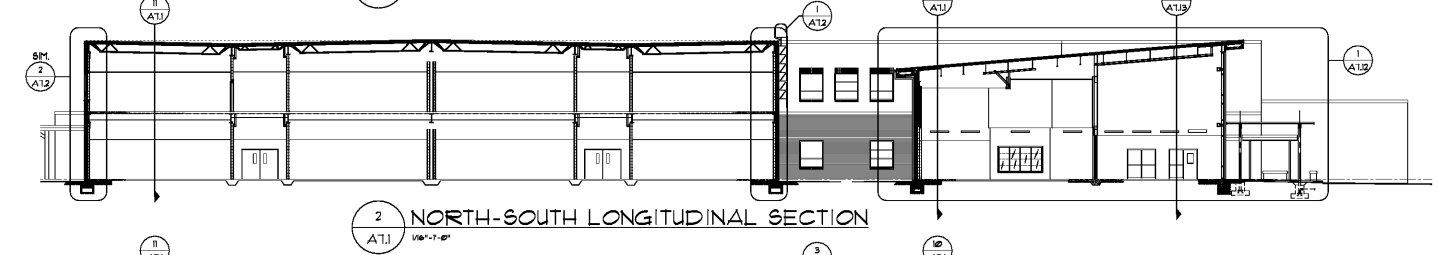
cunningham, forehand, matthews & moore, architects, inc. - 2011 manchester street, n.e. - atlanta, georgia 30324 - phone (404) 873-2152

cunningham forehand matthews moore

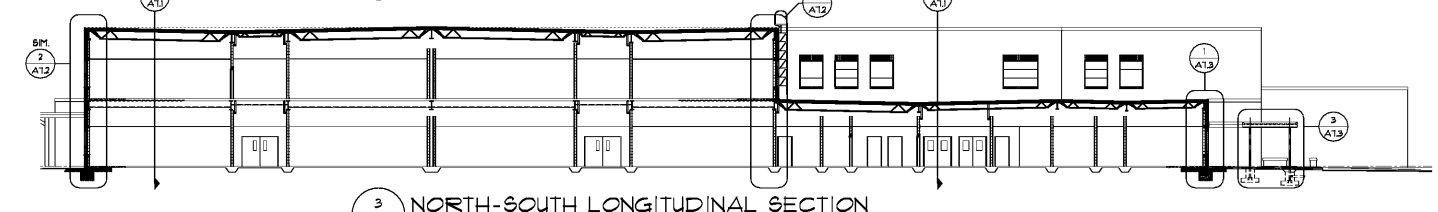
A7.1



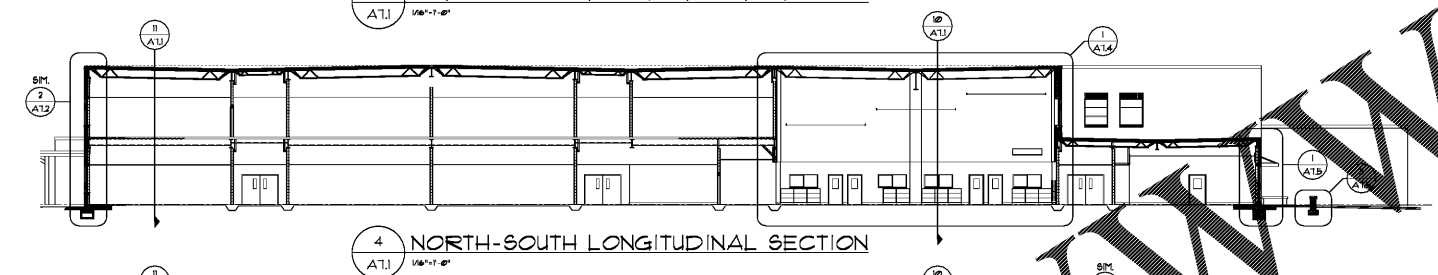
1 NORTH-SOUTH LONGITUDINAL SECTION
1/8" = 1'-0"



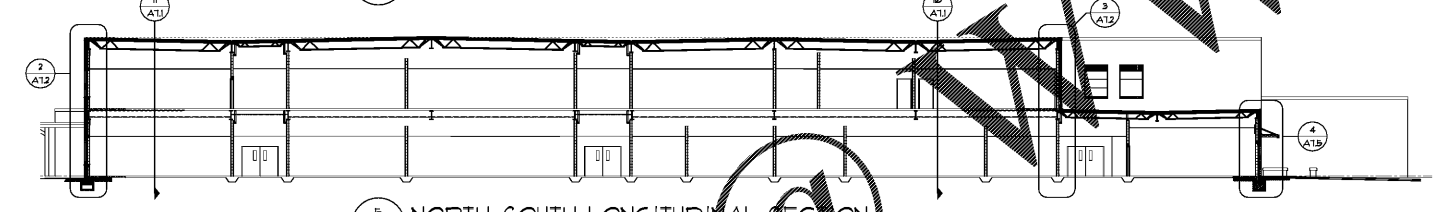
2 NORTH-SOUTH LONGITUDINAL SECTION
1/8" = 1'-0"



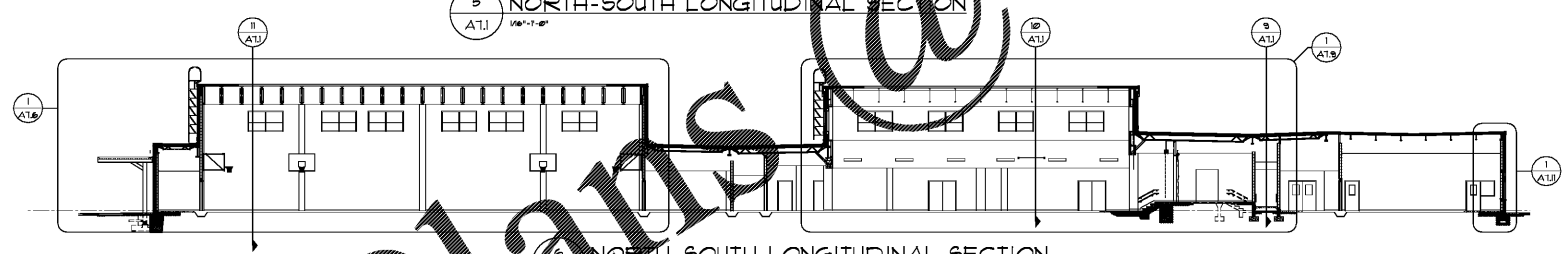
3 NORTH-SOUTH LONGITUDINAL SECTION
1/8" = 1'-0"



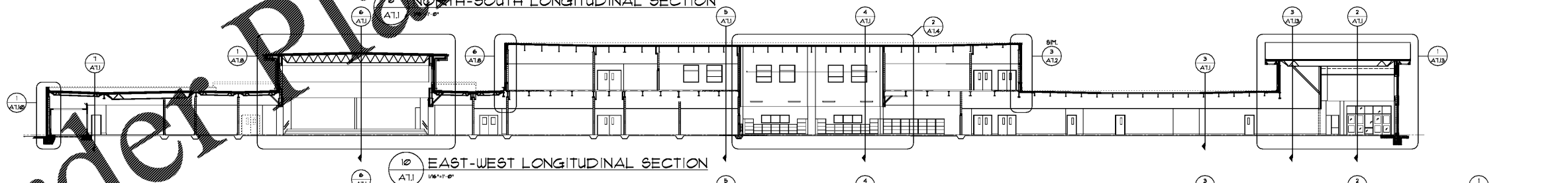
4 NORTH-SOUTH LONGITUDINAL SECTION
1/8" = 1'-0"



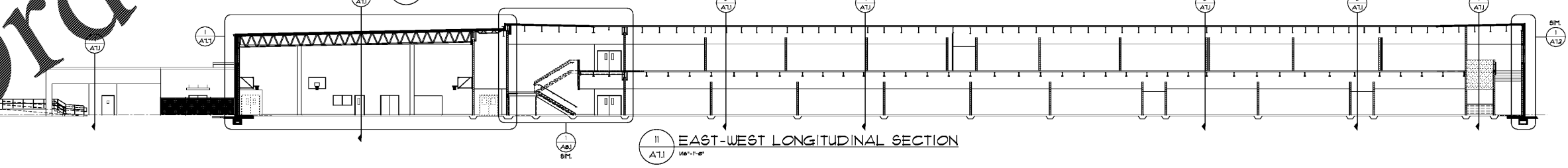
5 NORTH-SOUTH LONGITUDINAL SECTION
1/8" = 1'-0"



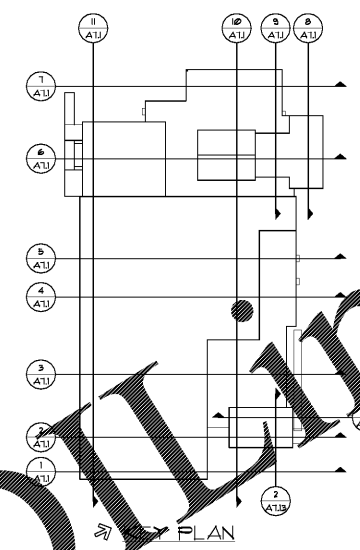
6 NORTH-SOUTH LONGITUDINAL SECTION
1/8" = 1'-0"



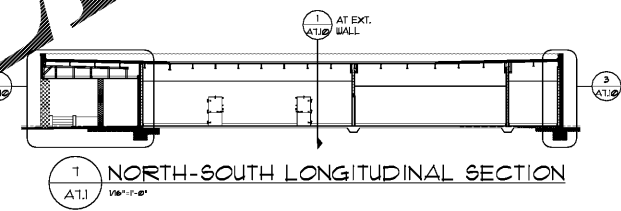
10 EAST-WEST LONGITUDINAL SECTION
1/8" = 1'-0"



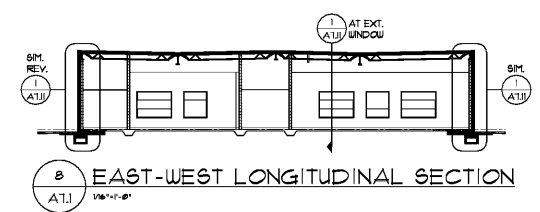
11 EAST-WEST LONGITUDINAL SECTION
1/8" = 1'-0"



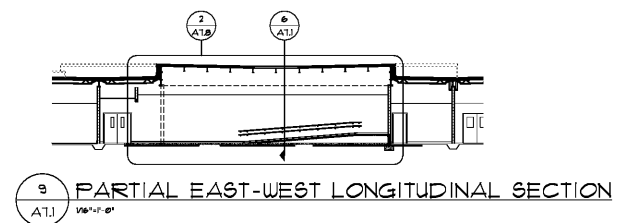
FLOOR PLAN



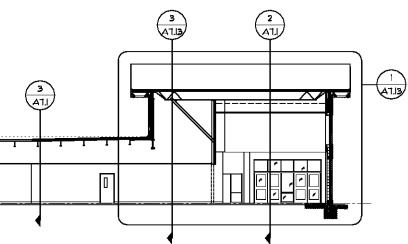
1 NORTH-SOUTH LONGITUDINAL SECTION
1/8" = 1'-0"



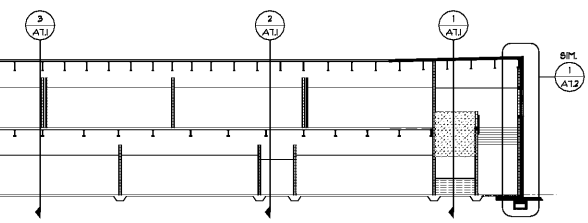
8 EAST-WEST LONGITUDINAL SECTION
1/8" = 1'-0"



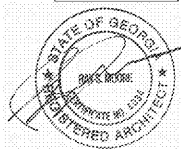
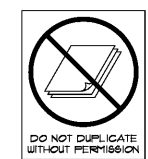
9 PARTIAL EAST-WEST LONGITUDINAL SECTION
1/8" = 1'-0"



3 EAST-WEST LONGITUDINAL SECTION
1/8" = 1'-0"



2 EAST-WEST LONGITUDINAL SECTION
1/8" = 1'-0"



Order Plans @ www.LDOnline.com