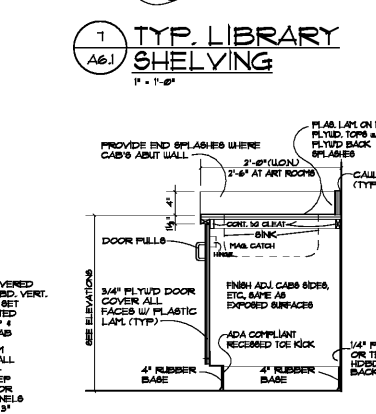
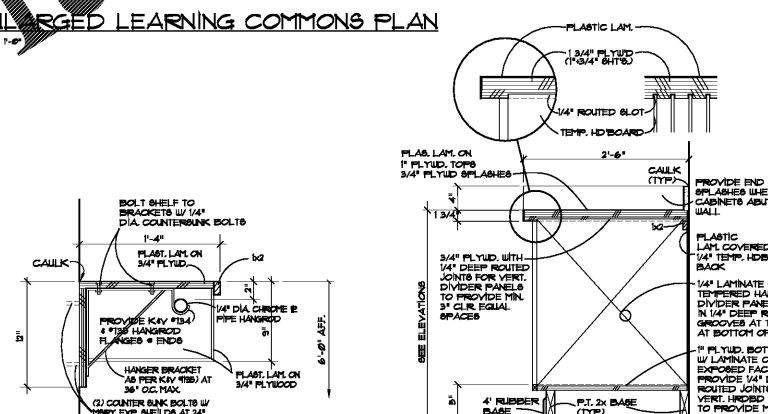
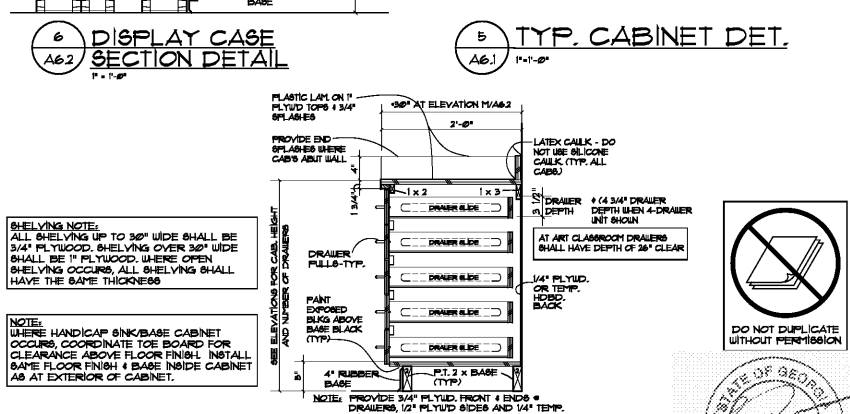
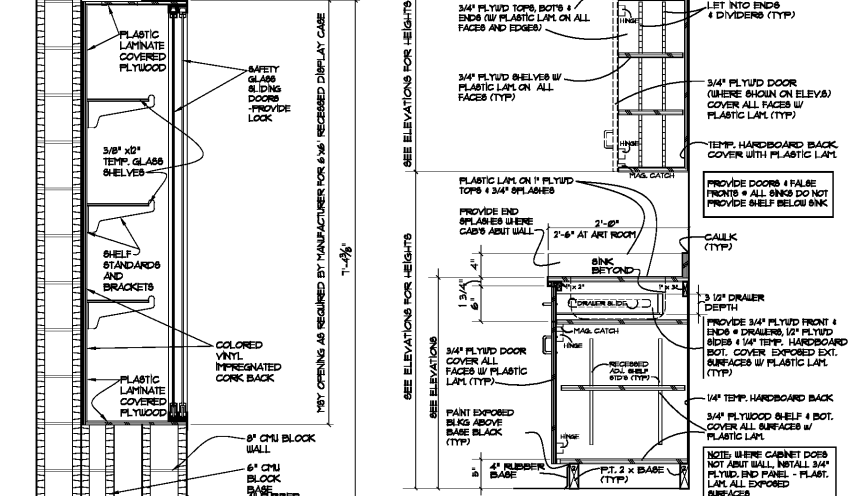
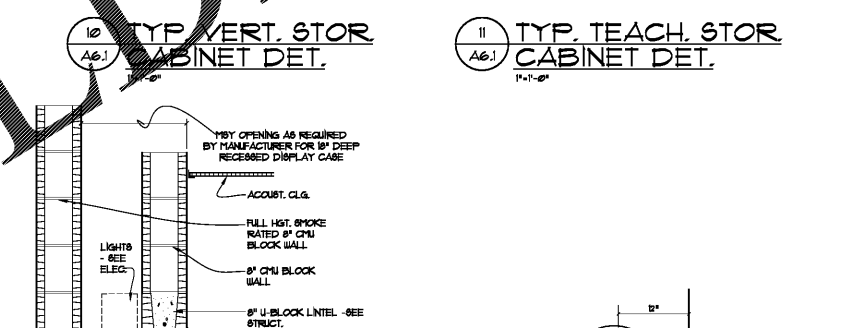
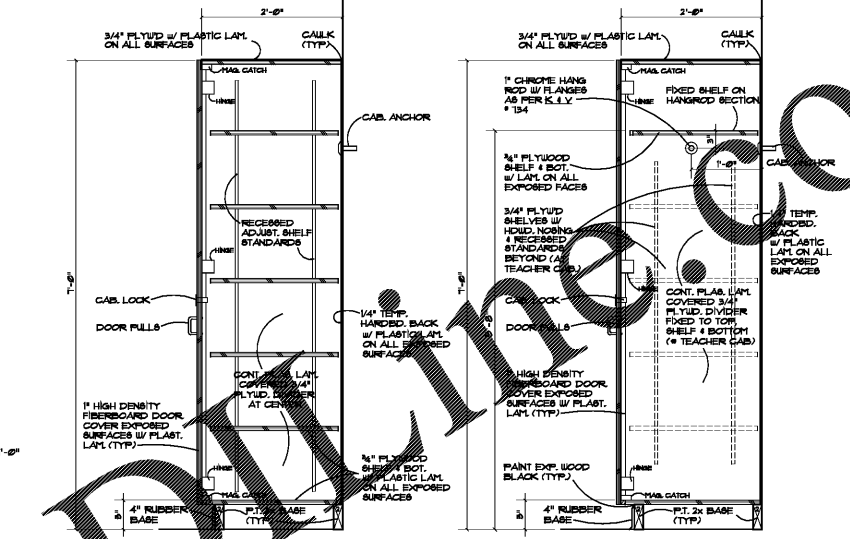
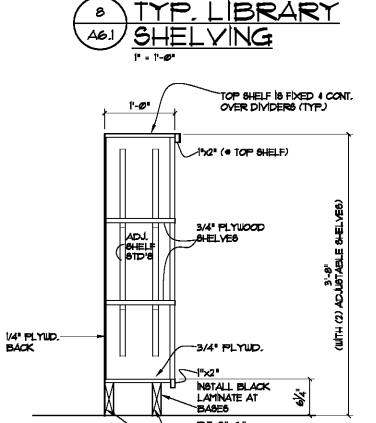
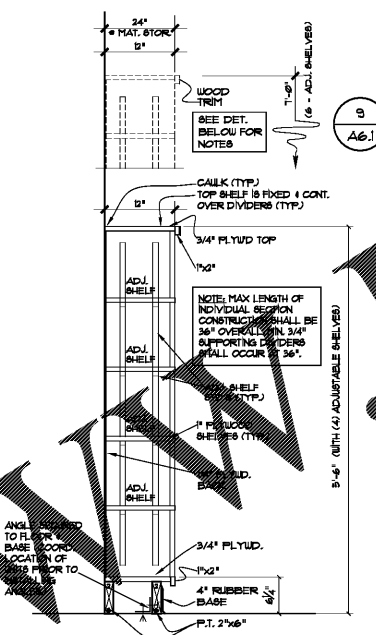
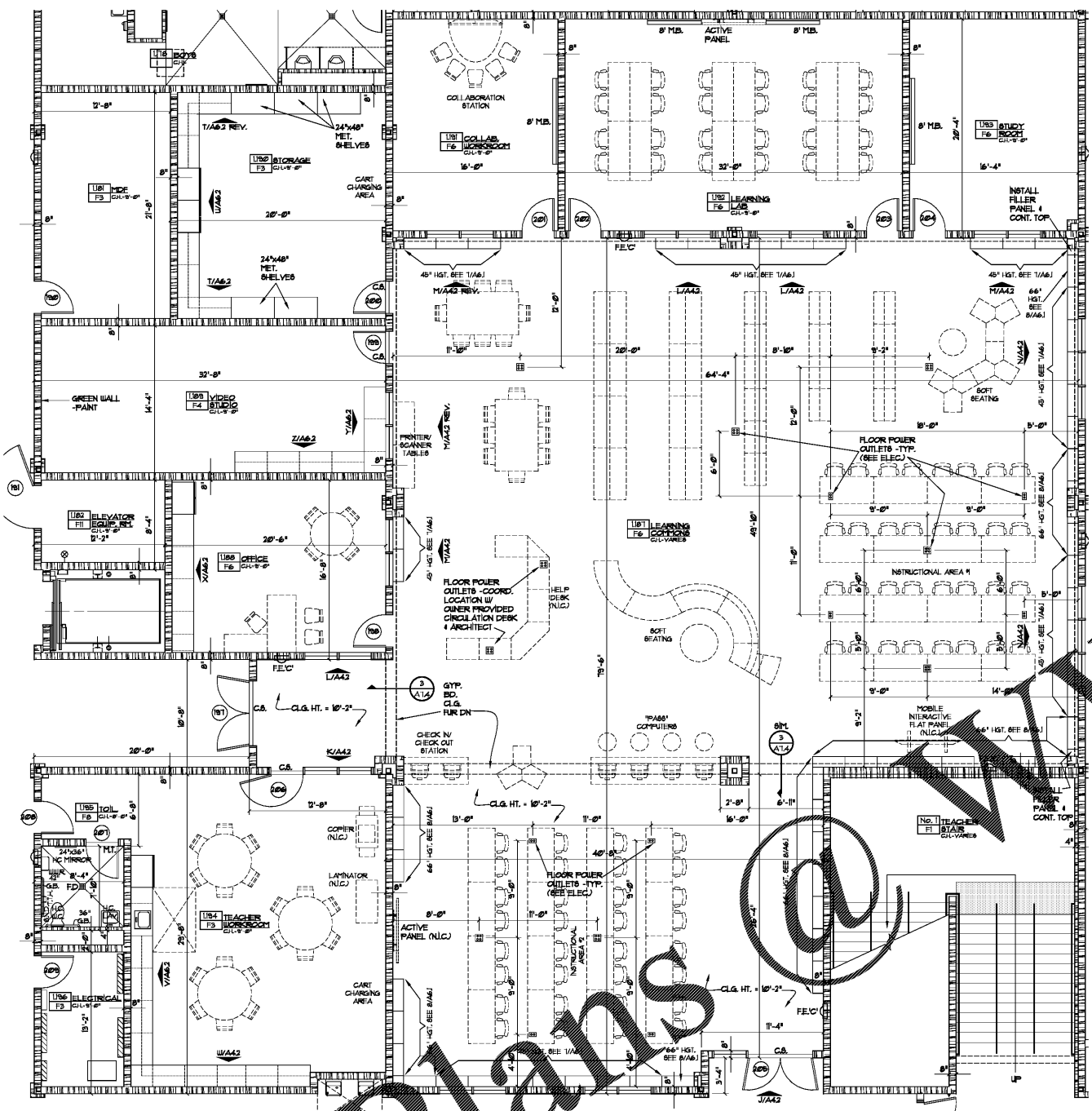


DRAWING ISSUE RECORD		
DATE	REVISION	NO.
11-1-18	ISSUE TO BID	

HARMONY ELEMENTARY SCHOOL
 REPLACEMENT ELEMENTARY SCHOOL
 6206 FACTORY BOARDS RD.
 HABLETON, GA 30136
 FOR COBES COUNTY SCHOOL DISTRICT
 COBES PROJECT NO. A684 / DOE FACILITY CO. 8188
 DATE: JUL 16, 2019
 JOB NO. SHL-1501-18
 DRAWN BY: AK
 CUNNINGHAM, FOREHAND, MATTHEWS & MOORE, ARCHITECTS, INC. - 2011 manchester street, n.e. - atlanta, georgia 30324 - phone (404) 873-2152
A6.1

- GENERAL NOTES AT LEARNING COMMONS**
- ALL MILLWORK AT MEDIA CENTER SHALL BE PLASTIC LAMINATE COVERED - ALL SURFACES & EDGES.
 - CLOSE SPACE ABOVE 3'-6" SECTION OF SHELVING. FINISH TO MATCH SHELVING.
 - PROVIDE FILLER AT EACH END OF SHELVING.
 - ALL 1/4" PLASTIC LAMINATE COVERED PLYWOOD TO RECEIVE BALANCE SHEET.
- LEGEND**
- | | |
|----------------------------------|------------------------------|
| AT. - ALUMINUM THRESHOLD | MT. - MARBLE THRESHOLD |
| ATA. - ALUMINUM TRANSITION STRIP | N/C. - NOT IN CONTRACT |
| CH. - CEILING HEIGHT | T.B. - TACK BOARD |
| CA. - CARPET STRIP | WH. - WALL HYDRANT |
| ED.F. - ELEC. DRINKING FOUNTAIN | FELC. - FIRE EXT. CABINET |
| M.B. - MARKER BOARD | MD.H. - MAGNETIC DOOR HOLDER |



Order Plans

