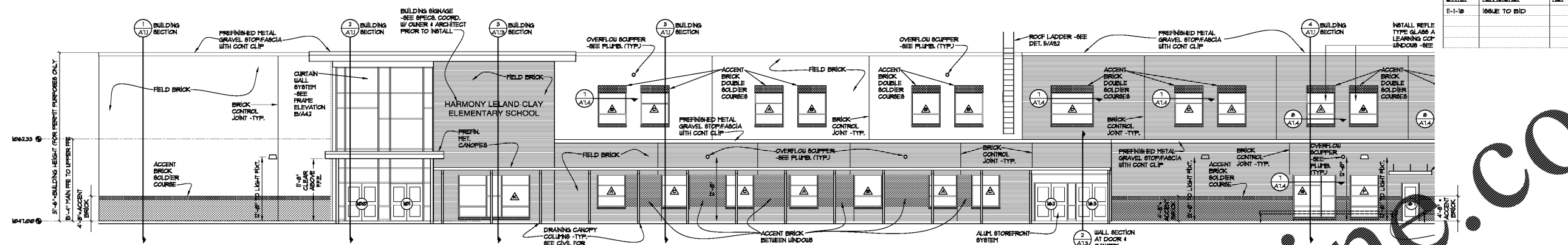


DRAWING ISSUE RECORD		
DATE	REVISIONS	NO.
11-1-18	ISSUE TO BID	

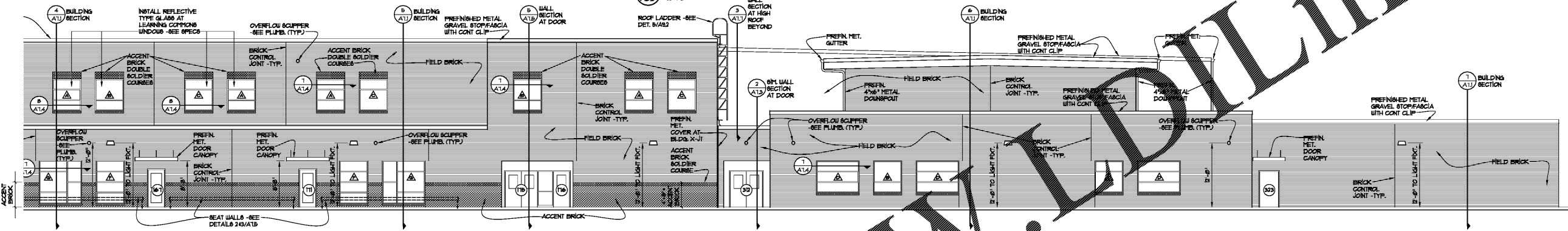
HARMONY LELAND-CLAY SCHOOL
 REPLACEMENT ELEMENTARY SCHOOL
 63746 FACTORY SHOALS RD SW
 HABLETON, GA 30226
 FOR COBB COUNTY SCHOOL DISTRICT
 C-1000 PROJECT NO. 44994 / JOE FACILITY SIDE #188

DATE: JUL 16, 2019
 JOB NO: 81-1501-18
 DRAWN BY: MK
 CHECKED BY: MK
 CUNNINGHAM, FOREHAND, MATTHEWS & MOORE, ARCHITECTS, INC. - 2011 MANCHESTER STREET, N.E. - ATLANTA, GEORGIA 30324 - PHONE (404) 873-2152

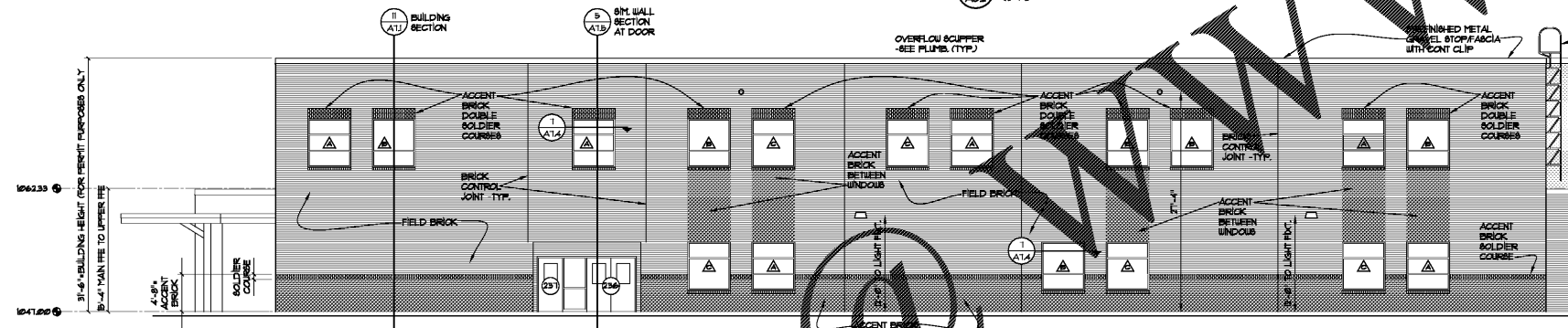
A5.2



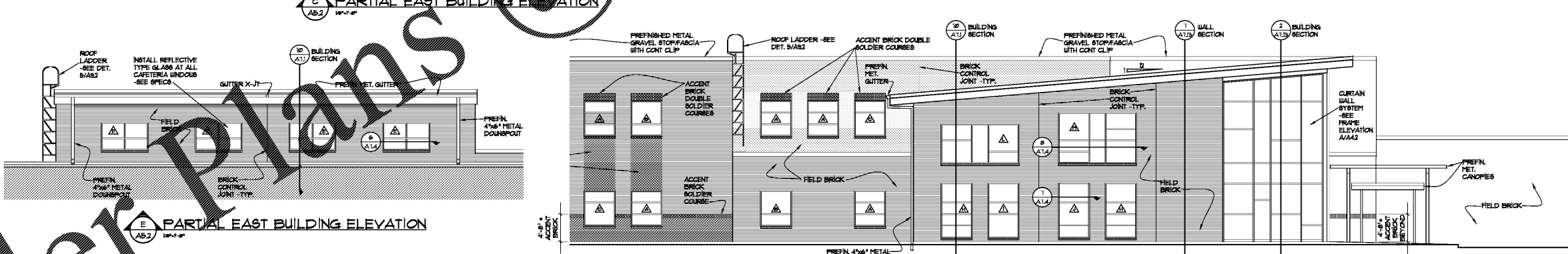
A PARTIAL NORTH BUILDING ELEVATION
 10'-0" = 1"



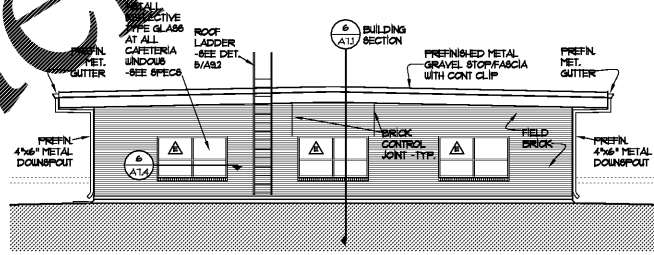
B PARTIAL NORTH BUILDING ELEVATION
 10'-0" = 1"



C PARTIAL EAST BUILDING ELEVATION
 10'-0" = 1"



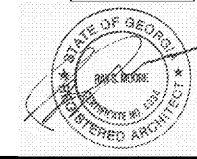
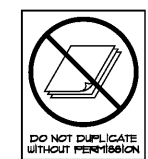
D PARTIAL EAST BUILDING ELEVATION
 10'-0" = 1"



E PARTIAL EAST BUILDING ELEVATION
 10'-0" = 1"



F PARTIAL EAST BUILDING ELEVATION
 10'-0" = 1"



Order Plans

www.DownLine.com