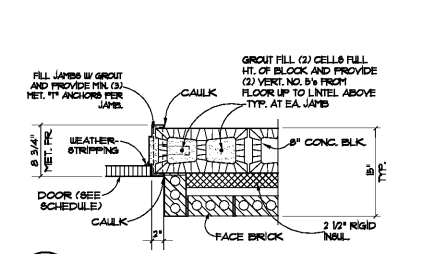
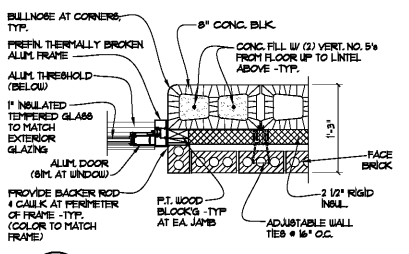


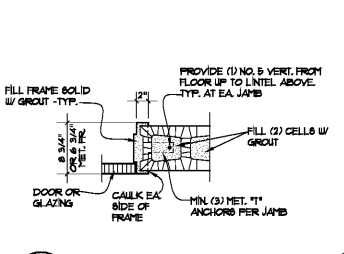
DRAWING ISSUE RECORD		
DATE	REVISIONS	NO.
11-1-18	ISSUE TO BID	



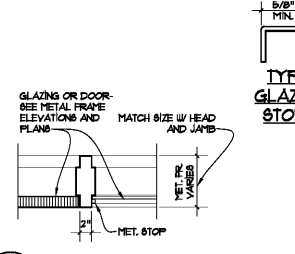
1 TYP. EXT. H. MET. DOOR JAMB DETAIL
A4.3
1" = 1'-0"



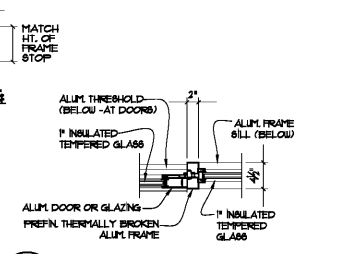
2 EXTERIOR ALUM. FRAME JAMB DET.
A4.3
1" = 1'-0"



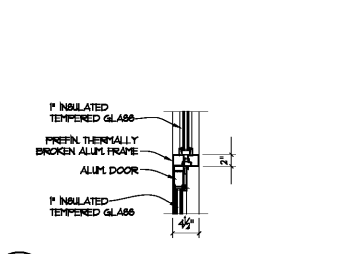
3 JAMB DET. @ CMU WALL
A4.3
1" = 1'-0"



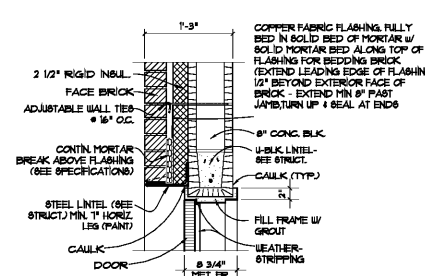
4 JAMB DET. @ H. MET. MULLION
A4.3
1" = 1'-0"



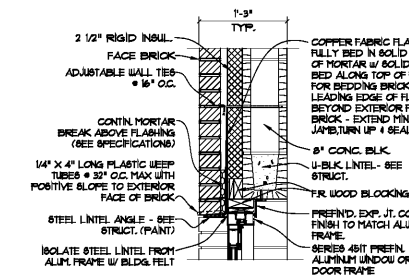
5 EXTERIOR ALUM. FRAME JAMB DET.
A4.3
1" = 1'-0"



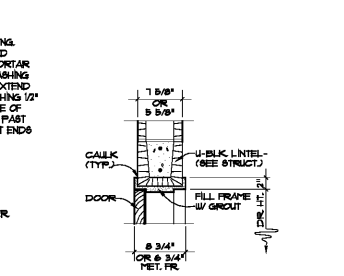
6 EXTERIOR ALUM. FRAME HEAD DET.
A4.3
1" = 1'-0"



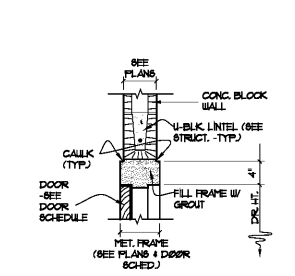
7 TYP. EXT. H. MET. DOOR HEAD DETAIL
A4.3
1" = 1'-0"



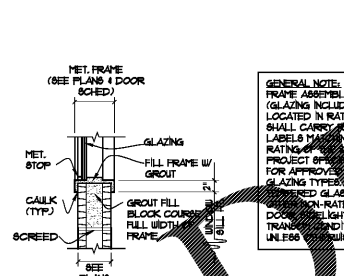
8 TYP. EXT. ALUM. FR. HEAD DETAIL
A4.3
1" = 1'-0"



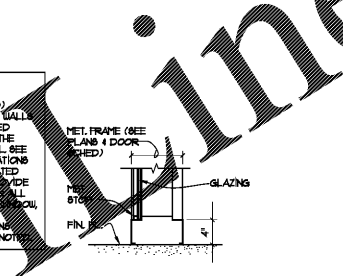
9 HEAD DET. @ CMU WALL
A4.3
1" = 1'-0"



10 TYP. 4" HEAD DETAIL
A4.3
1" = 1'-0"



11 TYP. HOLLOW MET. WINDOW SILL DET.
A4.3
1" = 1'-0"

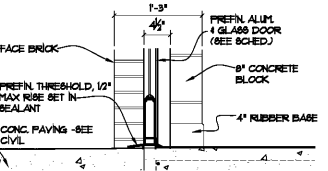


12 TYP. HOLLOW MET. FLOOR/SILL DET.
A4.3
1" = 1'-0"

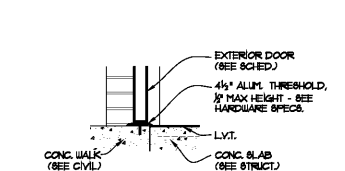
GENERAL NOTE:
FRAME ASSEMBLIES (GLAZING INCLUDED) LOCATED IN RATED WALL SHALL CARRY RATED LABELS INDICATING THE RATING. ALL SEE PROJECT SPECIFICATIONS FOR APPROVED GLAZING TYPES. PROVIDE INSULATED GLASS UNIT (IGU) UNLESS OTHERWISE NOTED.

NOTE: JAMB DET. 8M - PROVIDE MIN. (3) TEE TYPE JAMB ANCHORS. MET. FR. 16 2" AT JAMBS

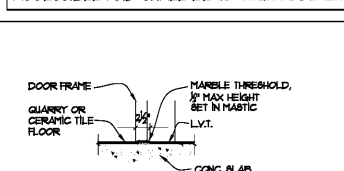
NOTE: ALL THRESHOLDS SHALL BE ADA ACCESSIBLE AND SHALL BE 1/2" HIGH MAXIMUM



13 TYP. ALUM. THRESH. AT S.F. DOOR
A4.3
1" = 1'-0"



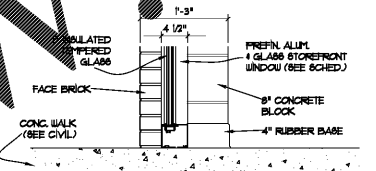
14 TYP. ALUM. THRESH. DETAIL
A4.3
1" = 1'-0"



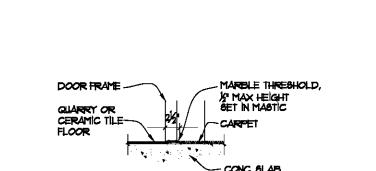
15 TYP. THIN-SET MARBLE THRESH.
A4.3
1" = 1'-0"



16 TYP. VCT TO CARPET OR CONC. TRANSITION DET.
A4.3
1" = 1'-0"



17 TYP. ALUM. SILL AT S.F. ASSEMBLY
A4.3
1" = 1'-0"



18 TYP. THIN-SET MARBLE THRESH.
A4.3
1" = 1'-0"



HARMONY LELAND-COOPER
REPLACEMENT ELEMENTARY SCHOOL
6326 FACTORY SHOALS RD SW
HABLETON, GA 30226
FOR COBB COUNTY SCHOOL DISTRICT
C-04826 / DOE FACILITY CODE 0188

cunningham, forehand, matthews & moore, architects, inc. - 2011 manchester street, n.e. - atlanta, georgia 30324 - phone (404) 873-2152