

DATE	REVISION	NO.
11-1-18	ISSUE TO BID	

NO.	FLOOR	BASE	WALLS	CEILING	REMARKS
F1	L.V.T.	4" RUBBER	CONC. BLOCK (EPOXY PAINT)	2M4 ACQUST. LAY-N TYPE I	
F2	L.V.T.	4" RUBBER	CONC. BLOCK (EPOXY PAINT)	2M4 ACQUST. LAY-N TYPE II	
F3	L.V.T.	4" RUBBER	CONC. BLOCK (EPOXY PAINT)	2M4 ACQUST. LAY-N TYPE I	
F4	L.V.T.	4" RUBBER	CONC. BLOCK (EPOXY PAINT)	2M4 ACQUST. LAY-N TYPE II	
F5	CARPET	4" RUBBER	CONC. BLOCK (EPOXY PAINT)	2M4 ACQUST. LAY-N TYPE I	
F6	CARPET	4" RUBBER	CONC. BLOCK (EPOXY PAINT)	2M4 ACQUST. LAY-N TYPE I	
F7	2M2 CERAMIC TILE	CER. TILE	CONC. BLOCK (EPOXY PAINT)	2M4 ACQUST. LAY-N TYPE I	
F8	2M2 CERAMIC TILE	CER. TILE	CONC. BLOCK (EPOXY PAINT)	2M4 ACQUST. LAY-N TYPE I	
F9	QUARRY TILE	QUARRY TILE	CONC. BLOCK (EPOXY PAINT)	2M4 ACQUST. LAY-N TYPE III	
F10	RESILIENT SPORTS FLOORING	6" RUBBER	CONC. BLOCK (EPOXY PAINT)	EXPOSED STRUCTURE	
F11	CONCRETE WITH HARDENER	4" RUBBER	CONC. BLOCK (EPOXY PAINT)	2M4 ACQUST. LAY-N TYPE I	
F12	CONCRETE WITH HARDENER	4" RUBBER	CONC. BLOCK (EPOXY PAINT)	2M4 ACQUST. LAY-N TYPE I	

CLG. TYPE	FINISH SCHEDULE LEGEND
TYPE I - STANDARD FINISHED NRC 35	L.V.T. - LUMINOUS VINYL
TYPE II - STANDARD FINISHED NRC 35	TYE - NON-FLUORESCENT
TYPE III - TYPE RATED FLOORING PERFORMED	Q.T. - QUARRY TILE
	C.T. - CERAMIC TILE

**FINISH SCHEDULE NOTES**

1. INTERFERE TO SPECIFIC FOR CONVENIENCE, BUT MAY APPLY TO THE SAME CONDITION EVERYWHERE IT IS FOUND. THESE NOTES APPLY TO ALL DRAWINGS.

2. PROVIDE FLOOR DRAIN IN ALL TOILETS WITH FLOOR DRAIN AND TILE ON BATHING BED PROVIDING POSITIVE SLOPE TO DRAIN.

3. MARBLE UNIFORM BILLS SHALL HAVE 3/8" RADIUS EXPLODED CORNERS. ALL CORNERS SHALL BE FACTORY GEL-COATED.

4. PROVIDE L.V.T. FLOOR INSIDE ELEVATOR CAB.

5. L.V.T. AT MET AREAS TYP. AT EDFA, BINS AND FLOOR DRAINS - USE EPOXY ADHESIVE AS RECOMMENDED BY MANUFACTURER FOR MET AREAS. SEE PLANS.

6. AT JANITOR CLOSETS PROVIDE POSITIVE SLOPE TO FLOOR DRAIN.

7. PAINT ALL INTERIOR GYP. BD. AT FACIAS, C.G. FUR-DOWN, ETC. WITH FLAT PAINT. UNQ. (SEE PLANS AND SECTIONS FOR LOCATIONS).

8. ALL CEILING REQUIRING PAINT SHALL BE PAINTED WHITE. (SEE SPECIFICATIONS SECTION 900000)

9. SEE SHEET A23 FOR FLOOR ACCENT TILE PATTERNS AND DETAILS.

10. SEE INTERIOR ELEVATIONS ON SHEET A23 AND SPECIFICATIONS FOR ACoustICAL REQUIREMENTS FOR GYMNASIUM, CAFETERIA, LARGE AND SMALL PUBLIC CLASSES, PROVIDE ACoustICAL WALL PANELS AS REQUIRED.

11. WHERE EXPOSED STRUCTURE IS TO BE PAINTED, PAINT ALL STRUCTURAL STEEL, DECKING, DUCTS, CONDUIT, SPRINKLER PIPING, ETC. - ALL EXPOSED TIE-BARS SHALL BE PAINTED. COORD. COLOR BY ARCHITECT.

12. PROVIDE ONE FIELD COLOR AND THREE ACCENT COLORS FOR RESILIENT SPORTS TILE FLOORINGS AT AT GYM 104 - SEE TILE PATTERNS ON SHEET A23.

13. PROVIDE CONCRETE W/ HARDENER AT KLN 106.

14. PROVIDE RUBBER TREADS 4 INCHES AT ALL STAIRS. PROVIDE STAIR TREAD AND LANDING EDGING AS SPECIFIED WITH ABRAASIVE, CONTRASTING COLOR AND WEAR. PROVIDE RESILIENT RUBBER TILE W/ HARPED PATTERN AT MID-LEVEL STAIR LANDINGS. PROVIDE RUBBER TACTILE BARRING STRIPS AS SPECIFIED, AT STAIR TOP LANDINGS AND AS SHOWN ON DRAWINGS.

**LEGEND**

===== BRICK VENEER w/ CONC. BLOCK & 2 1/2" RIGID INSUL.

===== CONC. BLOCK

===== CONCRETE PAVING

===== G.P. CONCRETE (RETAINING WALL)

===== ACQUST. FILL CELL WALL

AT - ALUMINUM THRESHOLD

A.T.A. - ALUMINUM TRANSITION STRIP

CB - CHALKBOARD

CH - CEILING HEIGHT

CJ - CONTROL JOINT

CT - CERAMIC TILE

CA - CARPET STRIP

DA - DOWN SPOUT

DA - DOUBLE GLAZING

DAN - ROOF OVERFLOW NOZZLE

EDF - ELEC. DRINKING FOUNTAIN

EP - ELECTRICAL PANEL

FD - FLOOR DRAIN

HR - HANDRAIL

HUL - WATER HEATER

L.V.T. - LUMINOUS VINYL TILE

MB - MARKERBOARD

MBA - MOP BASIN

MDA - MAGNETIC DOOR HOLDER

MA - MOP STRIP

MT - MARBLE THRESHOLD

NIC - NOT IN CONTRACT

PA - PROJECTION SCREEN

P.T.D. - PAPER TOWEL DISPENSER

RA - RAIN LEADER

TA - TACKBOARD

TAB - TELEPHONE BACKBOARD

T.T.H. - TOILET TISSUE HOLDER

T.W.A. - TACTILE WARNING STRIP

VB - VENTILATION BLINDS

WC - WATER CLOSET

WH - WALL HYDRANT

XJ - EXPANSION JOINT

Y - FIRE EXT. CABINET

FELC - FIRE EXT. BRACKET

FELB - WALL MOUNTED MAGNETIC DOOR HOLDER

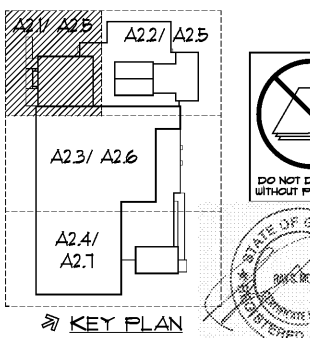
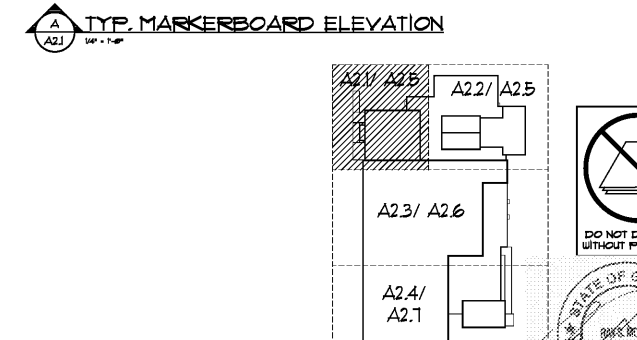
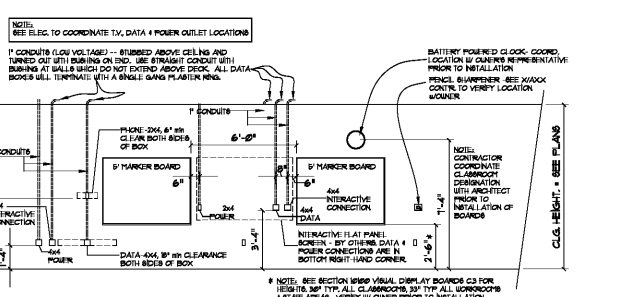
221 - DOOR NUMBER

222 - ROOM NUMBER

F2 - FINISH NUMBER

▽ - ONE HOUR RATED WALL

▽ - TWO HOUR RATED WALL



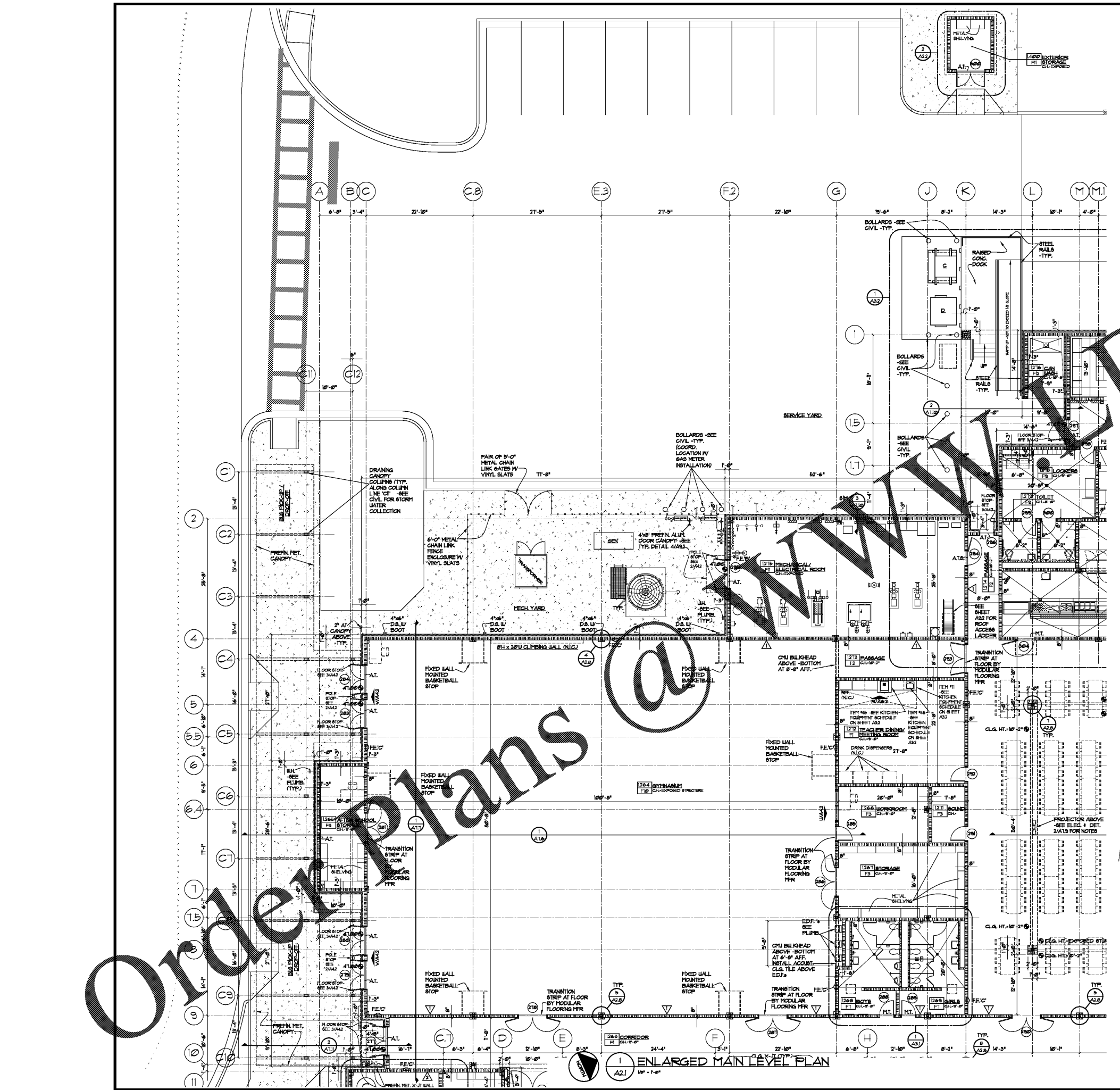
**HARMONY LELAND-CIVIL SCHOOL REPLACEMENT ELEMENTARY SCHOOL**

6326 FACTORY SHOALS ROAD, HABLETON, GA 30226  
FOR COBB COUNTY SCHOOL DISTRICTS  
C-100000 / C-100000 / C-100000 / C-100000

DATE: JUL 16, 2019  
JOB NO. SH-1501-18  
DRAWN BY: AK

cunningham, forehand, matthews & moore, architects, inc. - 2011 manchester street, n.e. - atlanta, georgia 30324 - phone (404) 873-2152

**A2.1**



Order Plans @