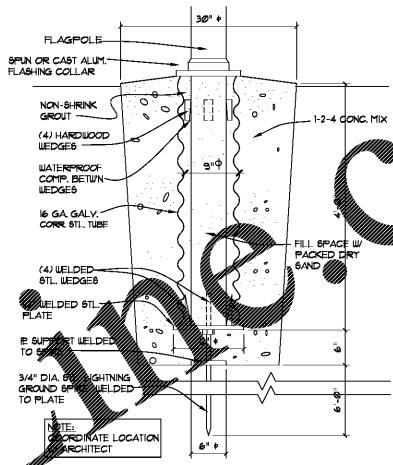
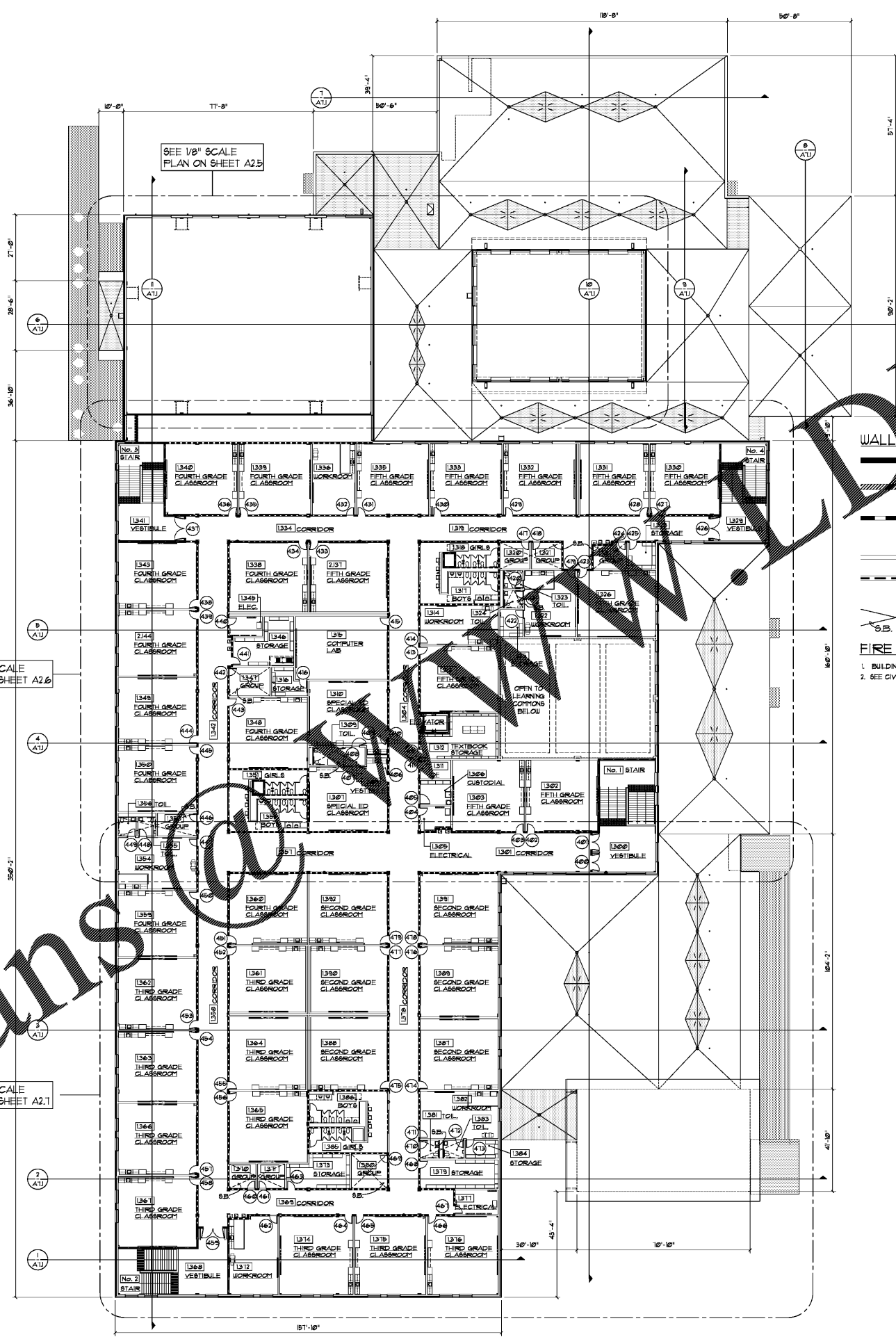


DRAWING ISSUE RECORD		
DATE	REVISIONS	NO.
11-1-18	ISSUE TO BID	

HARMONY LELAND-CLEGG SCHOOL  
 REPLACEMENT ELEMENTARY SCHOOL  
 6376 FACTORY SHOALS DRIVE  
 MABLETON, GA 30268  
 FOR COBB COUNTY SCHOOL DISTRICT  
 PROJECT NO. 16894 / 1000 FACILITY, PDS 0185  
 DATE: JUL 16, 2018  
 JOB NO. 8-1-1501-18  
 DWG. BY: AK

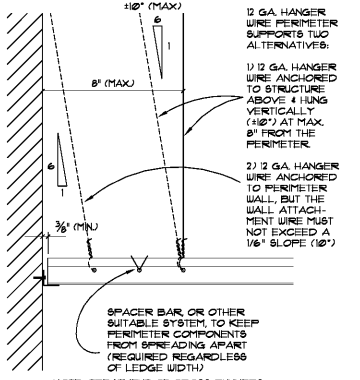


**WALL LEGEND**

- 1 HOUR RATED - SEALED TO DECK
- 2 HOUR RATED - SEALED TO DECK
- NON-RATED WALL EXTENDED TO DECK - AT CORRIDORS, WALLS SHALL LIMIT THE TRANSFER OF SMOKE & SEALED SMOKE TIGHT TO DECK PER NFPA 101.
- NON-RATED WALL
- ACOUSTICAL FILLED-CELL WALL EXTEND TO DECK. SEE SHEETS A21-A27 FOR LOCATIONS.
- SOUND BATT INSULATION ABOVE CLG. (SHALL HAVE SURFACING WITH FLAME SPREAD NOT TO EXCEED 75.)

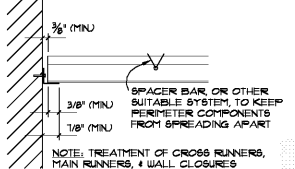
**FIRE RATING NOTES:**

1. BUILDING IS FULLY SPRINKLED.
2. SEE CIVIL FOR ALL WALKS AND DRIVES



**3 SEISMIC CLG. DET. AT WALL**

NOTE: CLG. GRID MAINS & CROSS MEMBERS SHALL NOT BE ATTACHED TO WALL EDGE TRIM, i.e. NO SCREWS, POP RIVETS OR MECHANICAL TABS. CEILING GRID SHALL COMPLY WITH THE REQUIREMENTS OF CISCA (CEILING AND INTERIOR SYSTEMS CONSTRUCTION ASSOCIATION), IBC SECTION 1613.1 & ASCE/SEI 1-05 SECTION 13.5.6. THIS NOTE APPLIES AT DETAILS 3/A12 AND 4/A12 - TYPICAL.



**4 SEISMIC CLG. DET. AT WALL**

NOTE: TREATMENT OF CROSS RUNNERS, MAIN RUNNERS, & WALL CLOSURES AT TERMINAL ENDS.



Order Plans @ [www.drawingline.com](http://www.drawingline.com)

cunningham, forehand, matthews & moore, architects, inc. - 2011 manchester street, n.e. - atlanta, georgia 30324 - phone (404) 873-2152