

DRAWING ISSUE RECORD		
DATE	REVISIONS	NO.
11-1-18	ISSUED TO BID	



HARMONY LEAN AND LAY  
REPLACEMENT ELEMENTARY SCHOOL  
6228 FACTORY SHOALS RD. SW  
CUMMING, GA 30041  
FOR COBB COUNTY SCHOOL DISTRICT  
Cobb County, GA  
CCSD PROJECT No. A004 / DOE FACILITY CODE

DATE: JUL 18 2019

JOB NO. SHL-002-18

DWG. BY: TUL

CHK. BY: RMS

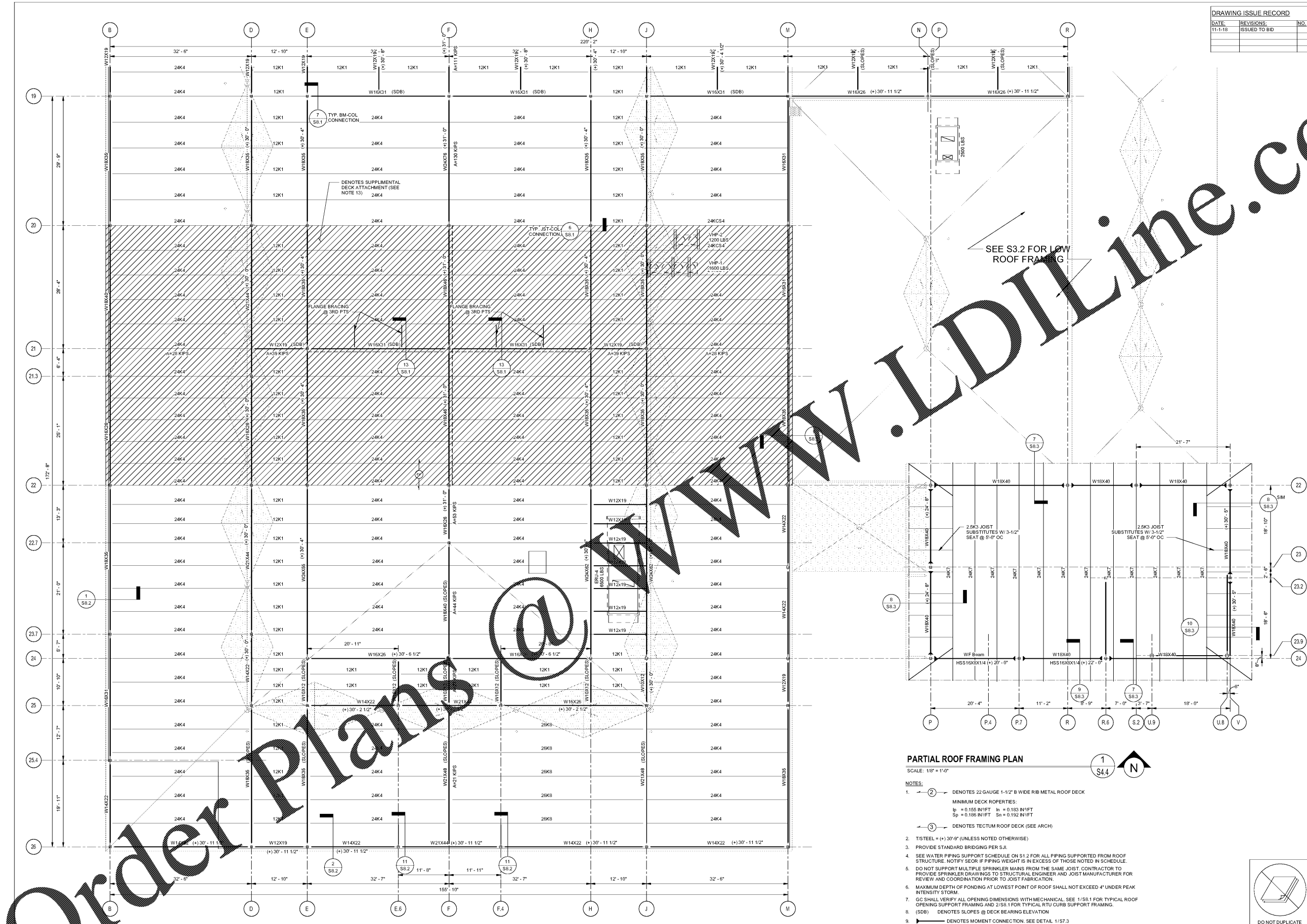
DATE: JUL 18 2019

JOB NO. SHL-002-18

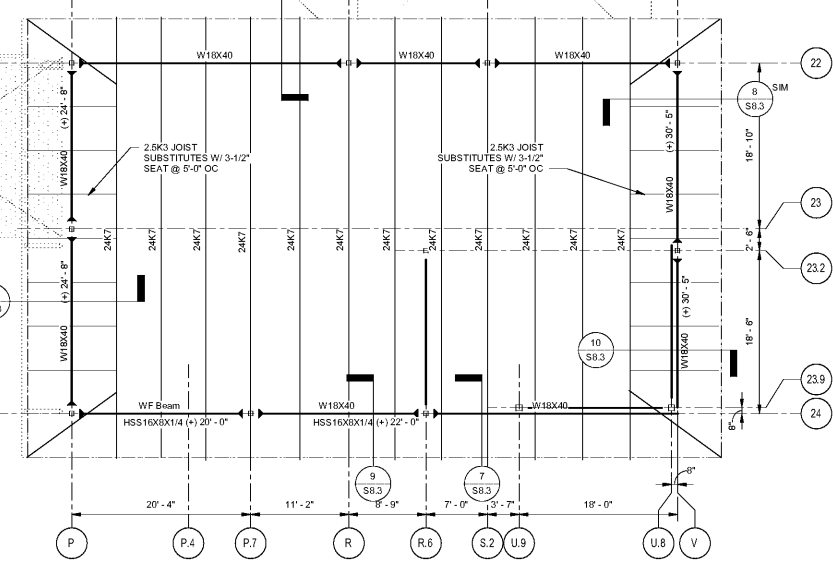
DWG. BY: TUL

CHK. BY: RMS

**cunningham forhand matthews moore**  
cunningham, forhand, matthews & moore, architects, inc. - 2011 manchester street, n.e. - atlanta, georgia 30324 - phone (404) 873-2152



Order Plans @ [www.LDLine.com](http://www.LDLine.com)



**PARTIAL ROOF FRAMING PLAN**  
SCALE: 1/8" = 1'-0"

- NOTES:**
- 2 DENOTES 22 GAUGE 1-1/2" B WIDE RIB METAL ROOF DECK  
MINIMUM DECK PROPERTIES:  
 $I_p = 0.155 \text{ IN}^4/\text{FT}$   $I_n = 0.183 \text{ IN}^4/\text{FT}$   
 $S_p = 0.186 \text{ IN}^3/\text{FT}$   $S_n = 0.192 \text{ IN}^3/\text{FT}$
  - 3 DENOTES TECTUM ROOF DECK (SEE ARCH)
  - 21STEEL = (+) 30'-6" (UNLESS NOTED OTHERWISE)
  - PROVIDE STANDARD BRIDGING PER SJI.
  - SEE WATER PIPING SUPPORT SCHEDULE ON S1.2 FOR ALL PIPING SUPPORTED FROM ROOF STRUCTURE. NOTIFY SEOR IF PIPING WEIGHT IS IN EXCESS OF THOSE NOTED IN SCHEDULE.
  - DO NOT SUPPORT MULTIPLE SPRINKLER MANS FROM THE SAME JOIST. CONTRACTOR TO PROVIDE SPRINKLER DRAWINGS TO STRUCTURAL ENGINEER AND JOIST MANUFACTURER FOR REVIEW AND COORDINATION PRIOR TO JOIST FABRICATION.
  - MAXIMUM DEPTH OF FONDING AT LOWEST POINT OF ROOF SHALL NOT EXCEED 4" UNDER PEAK INTENSITY STORM.
  - GC SHALL VERIFY ALL OPENING DIMENSIONS WITH MECHANICAL. SEE 1/S8.1 FOR TYPICAL ROOF OPENING SUPPORT FRAMING AND 2/S3.1 FOR TYPICAL RTU CURB SUPPORT FRAMING.
  - (SDB) DENOTES SLOPES @ DECK BEARING ELEVATION.
  - DENOTES MOMENT CONNECTION. SEE DETAIL 1/S7.3
  - DENOTES BRACED FRAME (SEE ELEVATIONS ON S9.2).
  - SEE 2/S7.3 FOR BENT BEAM DETAIL.
  - SEE 12/S8.1 FOR BENT BEAM DETAIL.
  - ATTACH DECK WITH 36/7 PATTERN & (B) SIDELAPS

**PES STRUCTURAL ENGINEERS**  
ADDRESS: 1832 Century Place NE, Suite 201, Atlanta, Georgia 30345  
PHONE: 770.457.5833 FAX: 770.457.8999 WEB: www.pesengineers.com  
PES PROJECT NUMBER: 0218161

