

| DRAWING ISSUE RECORD | | |
|----------------------|---------------|-----|
| DATE | REVISIONS | NO. |
| 11-1-18 | ISSUED TO BID | |



HARMONY LEARN AND PLAY
 REPLACEMENT ELEMENTARY SCHOOL
 6328 FACTORY SHOALS RD. SW
 FOR COBB COUNTY SCHOOL DISTRICT
 COBB COUNTY, GA
 CCSD PROJECT NO. A004 / DOE FACILITY CODE

DATE: JULY 18, 2019

JOB NO. SHL-002-18

DWG. BY: TUL

CHK. BY: RMS

DATE: JULY 18, 2019

JOB NO. SHL-002-18

DWG. BY: TUL

CHK. BY: RMS

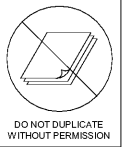
DATE: JULY 18, 2019

JOB NO. SHL-002-18

DWG. BY: TUL

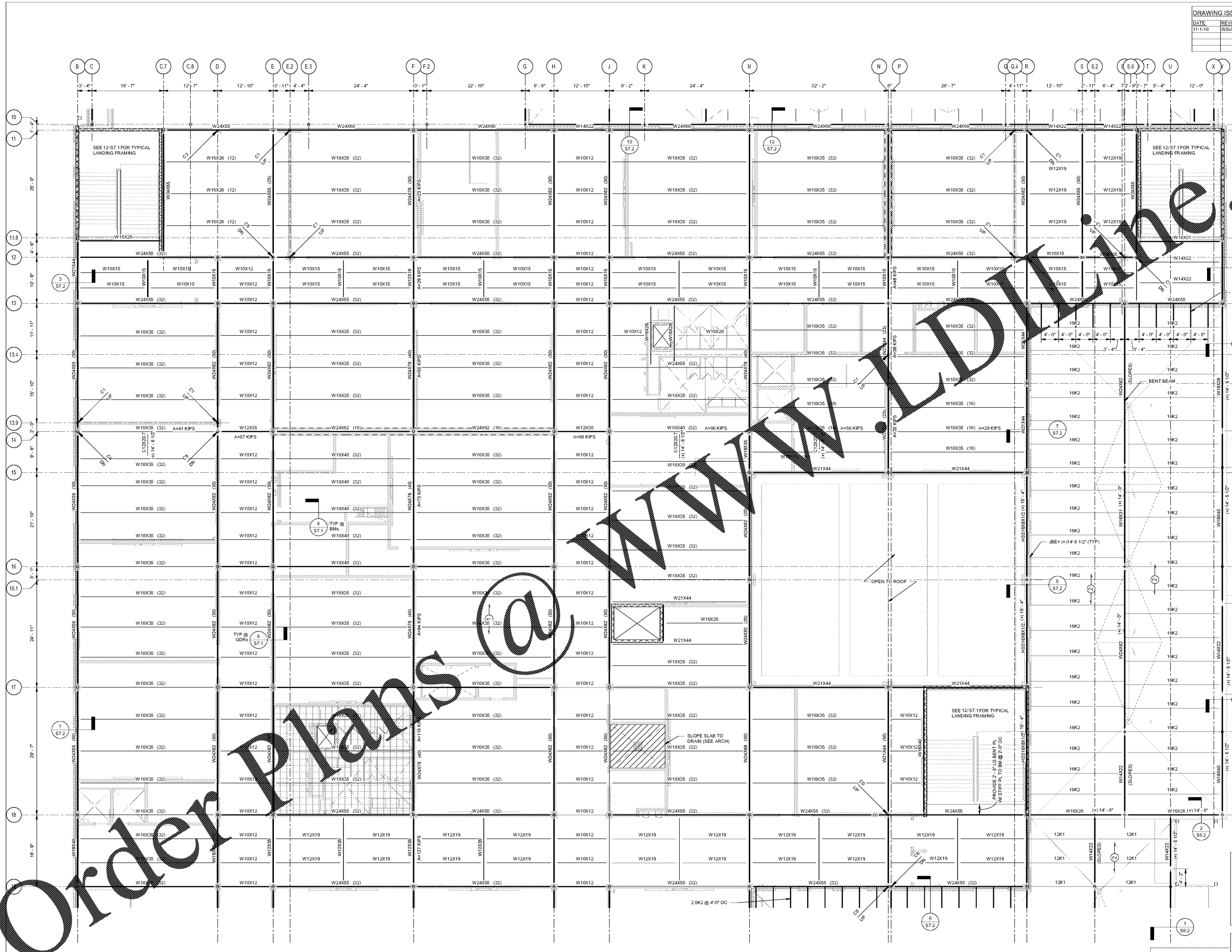
CHK. BY: RMS

cunningham forhandmatthewmoore
 cunningham, forhand, matthews & moore, architects, inc. - 2011 manchester street, n.e. - atlanta, georgia 30324 - phone (404) 873-2152



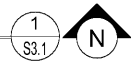
PES STRUCTURAL ENGINEERS
 ADDRESS: 1682 Century Place NE, Suite 201, Atlanta, Georgia 30345
 PHONE: 770.457.5833 FAX: 770.457.9099 WEB: www.pesengineers.com
 PES PROJECT NUMBER: 0218161

11/01/2016



Order Plans @ **WWW.ALDLINE.COM**

PARTIAL FLOOR FRAMING PLAN
 SCALE: 1/8" = 1'-0"
 NOTES:
 1. SEE S3.2 FOR FRAMING PLAN NOTES.



S3.1