

DRAWING ISSUE RECORD		
DATE	REVISIONS ISSUED TO BID	NO.
11-1-18		



HARMONY LEAN AND LAY
REPLACEMENT ELEMENTARY SCHOOL
 6328 FACTORY SHOALS RD. SW
 COLLETSVILLE, GA 30116
 FOR COBB COUNTY SCHOOL DISTRICT
 COBB COUNTY, GA
 CCSD PROJECT No. A004 / DOE FACILITY CODE

DATE: JULY 18, 2018

JOB NO. SHL-002-18

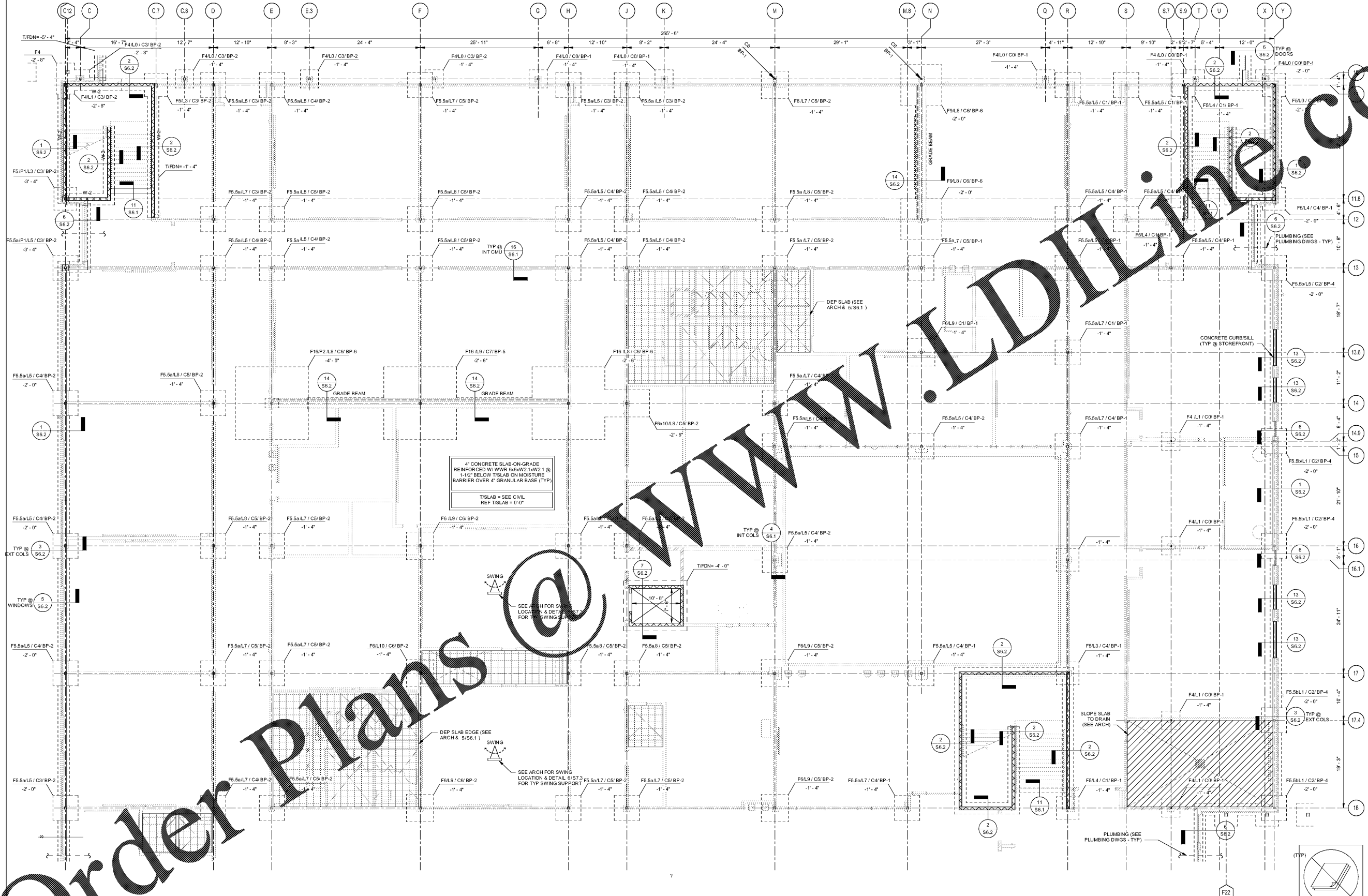
DESIGNED BY: TUL
 DRAWN BY: RMS

DATE: JULY 18, 2018

JOB NO. SHL-002-18

DESIGNED BY: TUL
 DRAWN BY: RMS

DATE: JULY 18, 2018



4" CONCRETE SLAB-ON-GRADE
 REINFORCED W/ WWR 6x6xW2.1xW2.1 @
 1'-1/2" BELOW T/S LAB ON MOISTURE
 BARRIER OVER 4" GRANULAR BASE (TYP.)
 T/S LAB = SEE CIVIL
 REF T/S LAB = 0'-0"



PARTIAL FOUNDATION PLAN

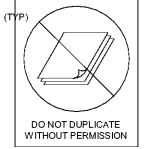
SCALE: 1/8" = 1'-0"
 NOTES:
 1. SEE PLAN FOR FOUNDATION PLAN NOTES.

STRUCTURAL FOUNDATION SCHEDULE					
MARK	LENGTH	WIDTH	THICKNESS	BOTTOM REINFORCEMENT	TOP REINFORCEMENT
F3	3'-0"	3'-0"	1'-0"	(4) - #5 E.W.	
F4	4'-0"	4'-0"	1'-0"	(5) - #5 E.W.	
F5	5'-0"	5'-0"	1'-0"	(6) - #5 E.W.	
F5.5a	5'-6"	5'-6"	1'-4"	(7) - #5 E.W.	
F5.5b	5'-6"	5'-6"	1'-4"	(7) - #5 E.W.	(7) - #5 E.W.
F6	6'-0"	6'-0"	1'-4"	(7) - #5 E.W.	
F6a	6'-0"	6'-0"	2'-4"	(7) - #5 E.W.	
F6x4	4'-0"	6'-0"	1'-3"	#7 @ 10" OC E.W.	#7 @ 10" OC E.W.
F6x10	10'-0"	6'-0"	2'-6"	(7) - #5 E.W.	
F9	9'-0"	9'-0"	2'-6"	(10) - #7 E.W.	(10) - #7 E.W.
F16	16'-0"	16'-0"	2'-6"	(16) - #7 E.W.	

STRUCTURAL COLUMN SCHEDULE	
MARK	SIZE
C0	HSS4X1/4
C1	HSS5X1/4
C2	HSS5X1/2
C3	HSS5X3/4
C4	HSS5X5/8
C5	HSS5X3/8
C6	HSS5X1/2
C7	HSS5X3/8
C8	HSS5X1/4
C9	HSS5X1/2

CMU REINFORCING SCHEDULE		
Mark	TYPICAL REINFORCEMENT	# END CELL REINF FULLY GROUTED & RENF
SW-1	#5 @ 24" OC	(2) - #5
SW-2	#5 @ 24" OC	(3) - #5
SW-3	#5 @ 24" OC	N/A
W-1	#5 @ 10" OC	N/A
W-2	#5 @ 24" OC	N/A

RAP LOAD SCHEDULE			
MARK	LIVE LOAD (KIPS)	DEAD LOAD (KIPS)	TOTAL LOAD (KIPS)
L0	10	10	20
L1	10	20	30
L2	20	30	50
L3	20	40	60
L4	20	50	70
L5	20	70	90
L6	30	70	100
L7	30	80	110
L8	35	95	130
L9	35	95	130
L10	60	120	180



PES STRUCTURAL ENGINEERS
 ADDRESS: 1682 Century Place NE, Suite 201, Atlanta, Georgia 30345
 PHONE: 770-457-5533 FAX: 770-457-8989 WEB: www.pesengineers.com
 PES PROJECT NUMBER: 0218161



cunningham forhand matthews moore

cunningham, forhand, matthews & moore, architects, inc. - 2011 manchester street, n.e. - atlanta, georgia 30324 - phone (404) 873-2152