

DRAWING ISSUE RECORD		
DATE	REVISIONS	NO.
11-1-18	ISSUED TO BID	



HARMONY LEAN AND CLAY
REPLACEMENT ELEMENTARY SCHOOL
6528 FACTORY SHOALS RD. SW
CUMMINGHAM ELEMENTARY SCHOOL DISTRICT
COBB COUNTY, GA
CCSD PROJECT No. A044 / DOE FACILITY CODE

DATE: JULY 18, 2018

JOB NO. SHL-002-18

DWG. BY: TUL

CHK. BY: RMS

DATE: JULY 18, 2018

JOB NO. SHL-002-18

DWG. BY: TUL

CHK. BY: RMS

DATE: JULY 18, 2018

JOB NO. SHL-002-18

DWG. BY: TUL

CHK. BY: RMS

DATE: JULY 18, 2018

JOB NO. SHL-002-18

DWG. BY: TUL

CHK. BY: RMS

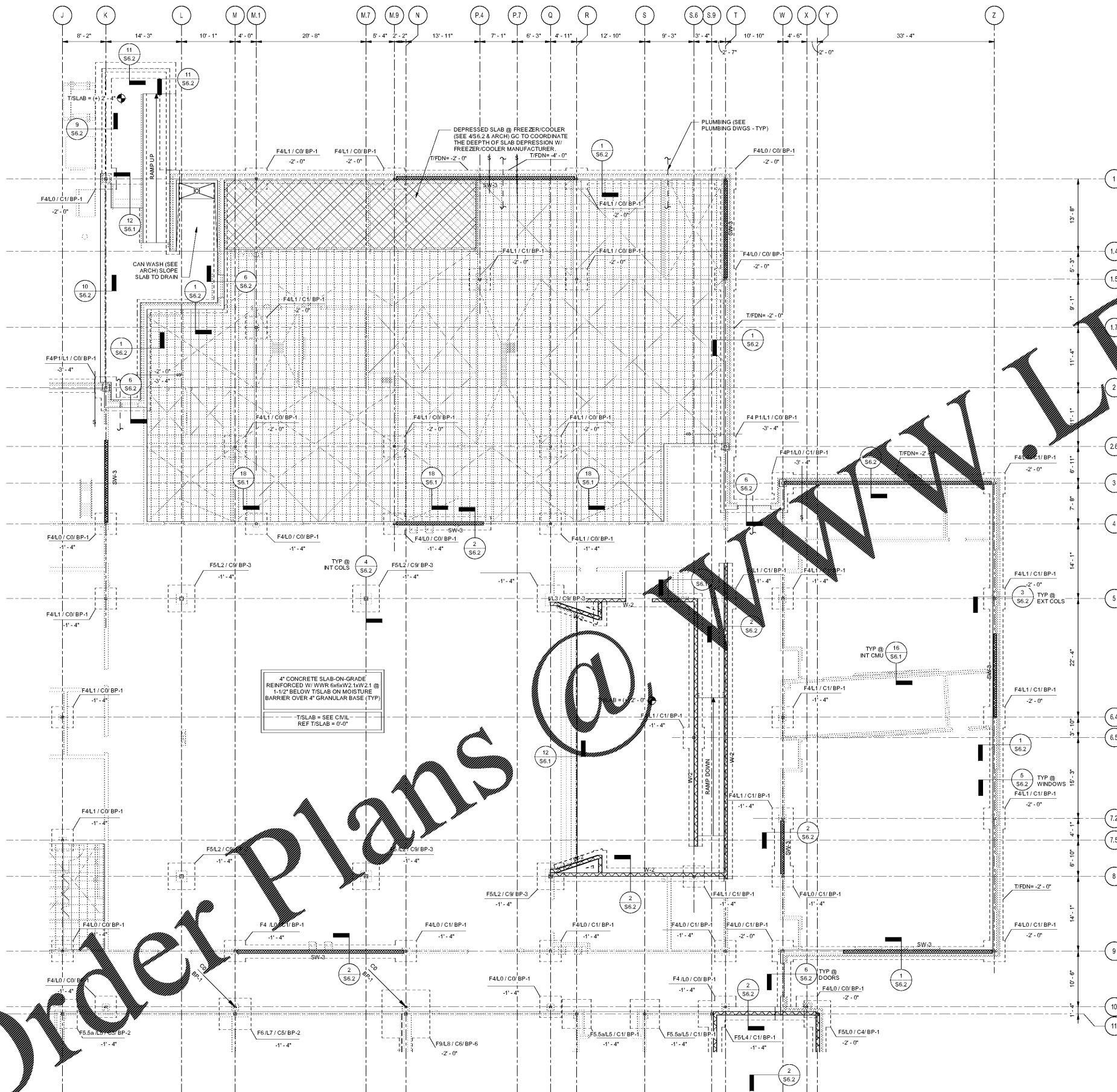
DATE: JULY 18, 2018

JOB NO. SHL-002-18

DWG. BY: TUL

CHK. BY: RMS

DATE: JULY 18, 2018



PARTIAL FOUNDATION PLAN

- SCALE: 1/8" = 1'-0"
FOUNDATION PLAN NOTES
1. MARK FOR REVISION (SEE SCHEDULE ON THIS SHEET)
 2. BASIC MARK (SEE S9.1)
 3. COLUMN MARK (SEE S9.1)
 4. CONCRETE (SEE S6.2)
 5. FOUNDATION (SEE SCHEDULE ON THIS SHEET)
 6. FINISH FLOOR ELEVATION
 7. SEE S3/S6.1 FOR CONTROL JOINT KEY PLAN
- SEE DETAILS 1/S6.1 AND 2/S6.1 FOR STANDARD DETAILS OF TRENCHES ADJACENT TO FOOTINGS AND PIPING PASSING UNDER WALL FOOTINGS. PIPING PASSING UNDER FOOTING MUST BE PLACED AND INSPECTED BEFORE FOOTINGS ARE PREPARED.
9. GC SHALL COORDINATE PLUMBING AND UTILITIES LOCATIONS WITH FOUNDATION AS NEEDED. ADDITIONALLY GC SHALL COORDINATE FOUNDATION ELEVATIONS WITH PLUMBING AND UTILITIES AS NEEDED. FORWARD ANY FOUNDATION LOCATION CHANGE REQUESTS TO STRUCTURAL ENGINEER OF RECORD FOR REVIEW AND APPROVAL.
 10. DENOTES STEP IN FOUNDATION (SEE 4/S6.1).
 11. DENOTES BRACED FRAME (SEE ELEVATIONS ON S9.2).
 12. DENOTES REINFORCED 8" CMU WALL (SEE REINFORCING SCHEDULE ON THIS SHEET).
 13. DENOTES 8" CMU SHEAR WALL (SEE REINFORCING SCHEDULE AND S9.1 FOR DETAILS).
 14. DENOTES REINFORCED 8" CMU WALL (SEE REINFORCING SCHEDULE ON THIS SHEET).
 15. SEE DETAILS 13/S6.1, 14/S6.1 AND 15/S6.1 FOR TYPICAL CMU WALL JOINTS, CORNER REINFC AND CONNECTIONS TO STEEL COLUMNS.
 16. BRACE INTERIOR CMU WALLS TO STRUCTURE ABOVE PER DETAILS 11/S6.1 & 10/S6.1.
 17. DENOTES AREA WITH DEPRESSED SLAB (SEE ARCH & DETAIL 5/S6.1).
 18. DENOTES AREA WITH SLOPED SLAB (SEE ARCH).
 19. DENOTES AREA WITH ADDITIONAL SLAB DEPRESSION AT COOLER/FREEZER (SEE ARCH).
 20. RRAMMED AGGREGATE PIER (RAP) SPECIALTY ENGINEER TO DESIGN AND INSTALL RAP IN ACCORDANCE WITH REPORT OF SUBSURFACE EXPLORATION AND GEOTECHNICAL INVESTIGATION BY GEO-HYDRO ENGINEERS No. 100512.20 DATED JULY 26, 2016.
 21. RRAMMED AGGREGATE PIER (RAP) SHALL PROVIDE A MINIMUM OF 5000 PSF BEARING PRESSURE WITH A MAXIMUM OF 1" TOTAL SETTLEMENT AND 1/2" DIFFERENTIAL SETTLEMENT. RAP SPECIALTY ENGINEER SHALL SUBMIT DRAWINGS AND CALCULATIONS SEALED BY A REGISTERED DESIGN PROFESSIONAL LICENSED IN GEORGIA FOR REVIEW.
 22. RRAMMED AGGREGATE PIER (RAP) SPECIALTY ENGINEER SHALL PROVIDE COPIES OF THE AGGREGATE PIER TESTING REPORTS GENERATED BY THE MATERIAL TESTING AGENCY TO THE BUILDING OFFICIAL. SEE SECTION 1706.7 OF THE INTERNATIONAL BUILDING CODE FOR ADDITIONAL INFORMATION.
 23. AT EXTERIOR GYM WALLS PROVIDE FULL LENGTH BOND BEAMS @ 3RD POINTS

STRUCTURAL COLUMN SCHEDULE

MARK	SIZE
C0	HSS6X4X1/4
C1	HSS6X4X1/4
C2	HSS6X4X1/2
C3	HSS6X4X1/4
C4	HSS6X4X1/4
C5	HSS6X4X3/8
C6	HSS6X4X1/2
C7	HSS6X4X3/8
C8	HSS6X4X1/4
C9	HSS6X4X1/2

CMU REINFORCING SCHEDULE

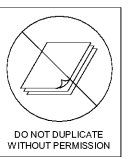
MARK	TYPICAL REINFORCEMENT	# END CELL REINFC
SW-1	#5 @ 24" OC	FULLY GROUTED & REINFC
SW-2	#5 @ 24" OC	(2) - #5
SW-3	#5 @ 24" OC	(3) - #5
W-1	#5 @ 16" OC	N/A
W-2	#5 @ 24" OC	N/A

STRUCTURAL FOUNDATION SCHEDULE

MARK	LENGTH	WIDTH	THICKNESS	BOTTOM REINFORCEMENT	TOP REINFORCEMENT
F3	3'-0"	3'-0"	1'-0"	(4) - #5 E.W.	
F4	4'-0"	4'-0"	1'-0"	(5) - #5 E.W.	
F5	5'-0"	5'-0"	1'-0"	(6) - #5 E.W.	
F5a	5'-0"	5'-0"	1'-4"	(7) - #5 E.W.	
F5b	5'-0"	5'-0"	1'-4"	(7) - #5 E.W.	(7) - #5 E.W.
F6	6'-0"	6'-0"	1'-4"	(7) - #5 E.W.	
F6b	6'-0"	6'-0"	2'-6"	(7) - #5 E.W.	
F6a	4'-0"	6'-0"	1'-3"	#7 @ 10" OC E.W.	#7 @ 10" OC E.W.
F6c	10'-0"	6'-0"	2'-6"	(17) - #5 E.W.	
F9	9'-0"	9'-0"	2'-6"	(10) - #7 E.W.	(10) - #7 E.W.
F16	16'-0"	16'-0"	2'-6"	(18) - #7 E.W.	(18) - #7 E.W.

RAP LOAD SCHEDULE

MARK	LIVE LOAD (KIPS)	DEAD LOAD (KIPS)	TOTAL LOAD (KIPS)
L0	10	10	20
L1	10	20	30
L2	20	30	50
L3	20	40	60
L4	20	50	70
L5	20	70	90
L6	30	70	100
L7	30	80	110
L8	35	95	130
L9	60	120	180



PES STRUCTURAL ENGINEERS
ADDRESS: 1632 Century Place NE, Suite 201, Atlanta, Georgia 30345
PHONE: 770.457.5533 FAX: 770.457.9999 WEB: www.pesengineers.com
PES PROJECT NUMBER: 0218161



cunningham forhand matthews moore

cunningham, forhand, matthews & moore, architects, inc. - 2011 manchester street, n.e. - atlanta, georgia 30324 - phone (404) 873-2152

Order Plans @ WWW.LDLine.com