

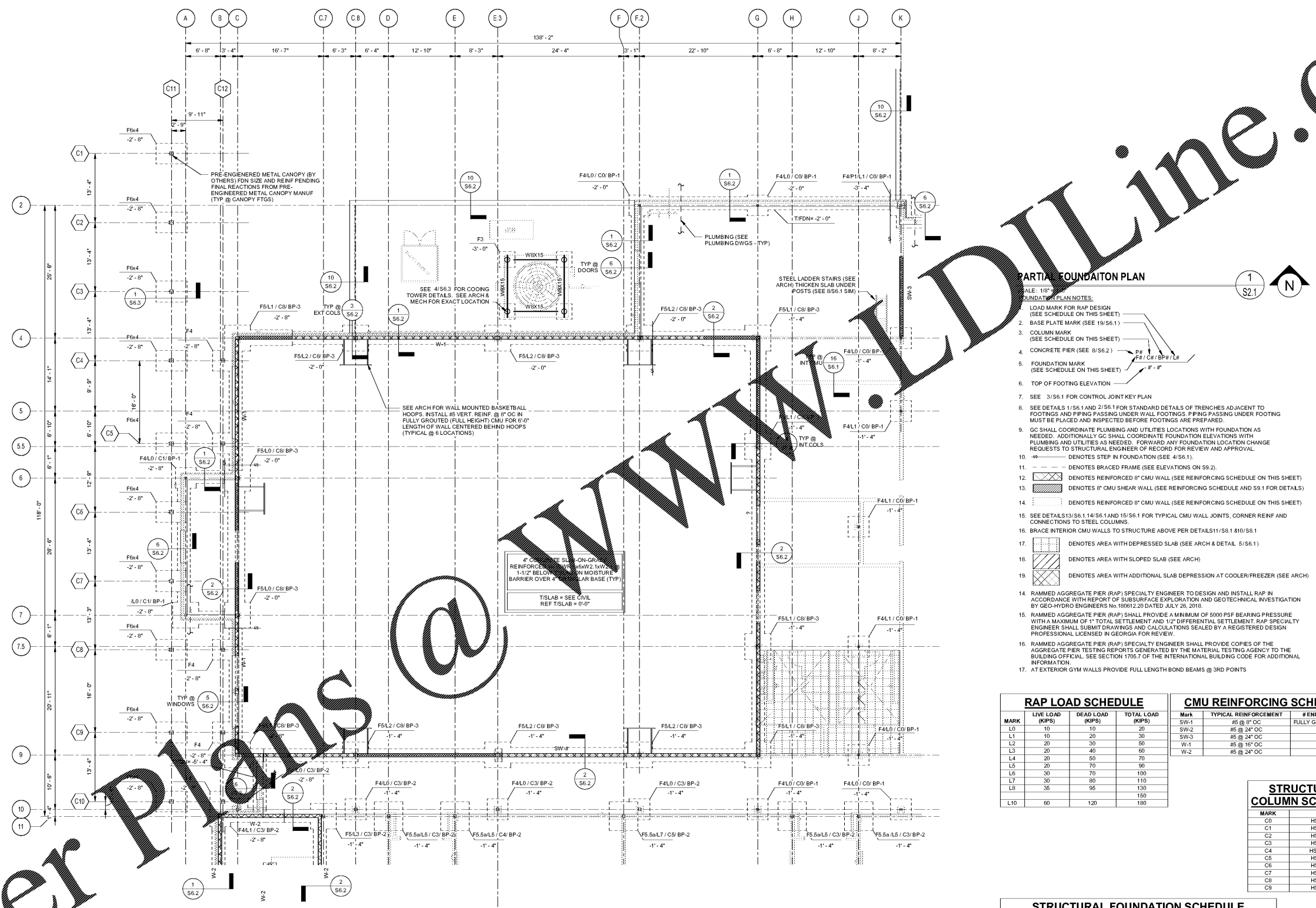
DRAWING ISSUE RECORD		
DATE	REVISIONS	NO.
11-1-18	ISSUED TO BID	



HARMONY LEAN AND LAY
REPLACEMENT ELEMENTARY SCHOOL
6528 FACTORY SHOALS RD. SW
CUMMING, GA 30041
FOR COBB COUNTY SCHOOL DISTRICT
C08B COUNTY, GA
CCSD PROJECT No. A004 / DOE FACILITY CODE

DATE: JUL 18 2018
JOB NO. SHL-002-18
DWG. BY: TUL
CHK. BY: RMS

cunningham, forcham, matthews & moore, architects, inc. - 2011 manchester street, n.e. - atlanta, georgia 30324 - phone (404) 873-2152

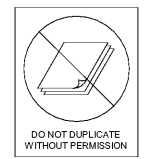


RAP LOAD SCHEDULE		
MARK	LIVE LOAD (KIPS)	DEAD LOAD (KIPS)
L0	10	10
L1	10	20
L2	20	30
L3	20	40
L4	20	50
L5	20	70
L6	30	70
L7	30	80
L8	35	95
L9		150
L10	60	120

CMU REINFORCING SCHEDULE		
MARK	TYPICAL REINFORCEMENT	# END CELL REINF
SW-1	#5 @ 16" OC	FULLY GROUTED & REINF
SW-2	#5 @ 24" OC	(2) - #5
L1 - #5	#5 @ 24" OC	(3) - #5
W-1	#5 @ 16" OC	N/A
W-2	#5 @ 24" OC	N/A

STRUCTURAL COLUMN SCHEDULE	
MARK	SIZE
C0	HSS4X4X1/4
C1	HSS5X5X1/4
C2	HSS5X5X1/2
C3	HSS6X6X1/4
C4	HSS6X6X5/16
C5	HSS6X6X3/8
C6	HSS6X6X1/2
C7	HSS6X6X3/8
C8	HSS6X6X1/4
C9	HSS6X6X1/2

STRUCTURAL FOUNDATION SCHEDULE					
MARK	LENGTH	WIDTH	THICKNESS	BOTTOM REINFORCEMENT	TOP REINFORCEMENT
F3	3'-0"	3'-0"	1'-0"	(4) - #5 E.W.	(4) - #5 E.W.
F4	4'-0"	4'-0"	1'-0"	(5) - #5 E.W.	(5) - #5 E.W.
F5	5'-0"	5'-0"	1'-0"	(6) - #5 E.W.	(6) - #5 E.W.
F5.5a	5'-6"	5'-6"	1'-4"	(7) - #5 E.W.	(7) - #5 E.W.
F5.5b	5'-6"	5'-6"	1'-4"	(7) - #5 E.W.	(7) - #5 E.W.
F6	6'-0"	6'-0"	1'-4"	(7) - #5 E.W.	(7) - #5 E.W.
F6b	6'-0"	6'-0"	2'-6"	(7) - #5 E.W.	(7) - #5 E.W.
F6.4	4'-0"	6'-0"	1'-3"	#7 @ 10" OC E.W.	#7 @ 10" OC E.W.
F6.10	10'-0"	6'-0"	2'-6"	(7) - #5 E.W.	(7) - #5 E.W.
F9	9'-0"	9'-0"	2'-6"	(10) - #7 E.W.	(10) - #7 E.W.
F16	16'-0"	16'-0"	2'-6"	(18) - #7 E.W.	(18) - #7 E.W.



PES STRUCTURAL ENGINEERS
ADDRESS: 1832 Century Place NE, Suite 201, Atlanta, Georgia 30345
PHONE: 770.457.5533 FAX: 770.457.9999 WEB: www.pesengineers.com
PES PROJECT NUMBER: 0218161



S2.1

Order Plans @

WWW.LDLine.com