

SPILL CLEANUP & CONTROL PRACTICES 25

- LOCAL STATE & MANUFACTURER'S RECOMMENDED METHODS FOR SPILL CLEANUP WILL BE CLEARLY POSTED & PROCEDURES WILL BE MADE AVAILABLE TO SITE PERSONNEL.
- MATERIAL & EQUIPMENT NECESSARY FOR SPILL CLEANUP WILL BE KEPT IN THE MATERIAL STORAGE AREA. TYPICAL MATERIALS & EQUIPMENT INCLUDES BUT IS NOT LIMITED TO: RUBBERS (GLOVES), ROPS, RAIN COATS, GOGGLES, CAT LITTER, SAND, SANDPAPER, PROPERLY LABELED PLASTIC & METAL WASTE CONTAINERS.
- SPILL PREVENTION PRACTICES & PROCEDURES SHALL BE REVERSED AFTER A SPILL & ADJUSTED AS NECESSARY TO PREVENT FUTURE SPILLS.
- ALL SPILLS WILL BE CLEANED UP IMMEDIATELY UPON DISCOVERY. ALL SPILLS WILL BE REPORTED AS REQUIRED BY LOCAL, STATE & FEDERAL REGULATIONS.
- FOR SPILLS THAT IMPACT SURFACE WATER (LEAKS & SPILLS ON SURFACE WATER) THE NATIONAL RESPONSE CENTER (NRC) WILL BE CONTACTED WITHIN 24 HOURS AT 1-800-426-7676.
- FOR SPILLS OF AN UNKNOWN PRODUCT THE NATIONAL RESPONSE CENTER (NRC) WILL BE CONTACTED WITHIN 24 HOURS AT 1-800-426-7676.
- FOR SPILLS GREATER THAN 25 GALLONS & NO SURFACE WATER IMPACTS OCCUR, THE GEORGIA EPCD WILL BE CONTACTED WITHIN 24 HOURS.
- FOR SPILLS LESS THAN 25 GALLONS & NO SURFACE WATER IMPACTS OCCUR, THE SPILL WILL BE CLEANED UP BY LOCAL AGENCIES WILL BE CONTACTED AS REQUIRED.

CONTRACTOR SHALL CONTACT THE DESIGN PROFESSIONAL WHO PREPARED THE ES&PC PLAN TO INSPECT THE INSTALLATION OF THE INITIAL SEDIMENT STORAGE REQUIREMENTS AND PERIMETER CONTROL BMPs WITHIN 7 DAYS AFTER INSTALLATION

NON-EXEMPT ACTIVITIES SHALL NOT BE CONDUCTED WITHIN THE 25 OR 50-FOOT UNDISTURBED STREAM BUFFERS AS MEASURED FROM THE POINT OF WRESTED VEGETATION WITHOUT FIRST ACQUIRING THE NECESSARY VARIANCES AND PERMITS

ANY AMENDMENTS/REVISIONS TO THE ES&PC PLAN HAVING A SIGNIFICANT EFFECT ON BMPs WITH A HYDRAULIC COMPONENT MUST BE CERTIFIED BY THE DESIGN PROFESSIONAL AND MUST BE APPROVED BY THE ATHENS-CLARKE COUNTY TRANSPORTATION AND PUBLIC WORKS DEPARTMENT.

WASTE MATERIALS SHALL NOT BE DISCHARGED TO WATERS OF THE STATE, EXCEPT AS AUTHORIZED BY A SECTION OF 404 PERMIT

THE ESCAPE OF SEDIMENT FROM THE SITE SHALL BE PREVENTED BY THE INSTALLATION OF EROSION AND SEDIMENT CONTROL MEASURES AND PRACTICES PRIOR TO LAND DISTURBING ACTIVITIES.

EROSION CONTROL MEASURES WILL BE MAINTAINED AT ALL TIMES. IF FULL IMPLEMENTATION OF THE APPROVED PLAN DOES NOT PROVIDE FOR EFFECTIVE EROSION CONTROL, ADDITIONAL EROSION AND SEDIMENT CONTROL MEASURES SHALL BE IMPLEMENTED TO CONTROL OR TREAT THE SEDIMENT SOURCE.

ANY DISTURBED AREA LEFT EXPOSED FOR A PERIOD GREATER THAN 14 DAYS SHALL BE STABILIZED WITH MULCH OR TEMPORARY SEEDING.

DISTURBANCE SUMMARY 6

TOTAL SITE AREA: 15.02 ACRES
 ON-SITE DISTURBANCE: 14.9 ACRES
 % OF SITE: 99%
 DISTURBANCE W/IN R.W: 0.5 ACRES
 TOTAL PROJECT DISTURBANCE: 15.4 ACRES

INTERMEDIATE EROSION CONTROL PHASE "B" SUMMARY 35

THE CONTRACTOR SHALL MAINTAIN ALL BMPs INSTALLED DURING THE PHASE "A" AND REQUIRED DURING THE INTERMEDIATE PHASE OF EROSION CONTROL AS SHOWN. INTERMEDIATE PHASE "B" SHALL BE THE INSTALLATION OF THE REMAINING SEDIMENT CONTROL MEASURES, PREPARATION OF THE SUB BASE FOR THE PAVING AND BUILDING IMPROVEMENTS AND AS WELL AS GRASSING DISTURBED AREAS. ALL NEW BMPs SHALL HAVE INLET PROTECTION AS SHOWN ON THESE PLANS. ADDITIONALLY CONTRACTOR SHALL PROVIDE APPROPRIATE MEASURES AT CONSTRUCTION EXITS (E) THAT SHALL BE IN PLACE UNTIL ANTICIPATED TO TRIMLINE (OR ELIMINATED) SEDIMENT TRAPPAGE INTO THE RIGHT-OF-WAY.

STORMWATER POLLUTANT CONTROL NARRATIVE 26, 27

CONSTRUCTION OF THE PROPOSED BUILDING, PARKING AREA, AND SITE IMPROVEMENTS WILL YIELD AN INCREASE IN PERVIOUS AREA (AND FLOW) COMPARED TO EXISTING CONDITIONS. CONSTRUCTION OF 1 DETENTION POND, PERVIOUS PAVING, AND 1 BIO-RETENTION CELL ARE PROPOSED TO REDUCE THE POST DEVELOPED PEAK DISCHARGE RATES TO RATES OF "GOOD IN GOOD CONDITION". ADDITIONALLY THESE IMPROVEMENTS WILL REDUCE THE POLLUTANTS IN THE STORMWATER DURING AND AFTER CONSTRUCTION IS COMPLETED.

PAM FLOC / GEL BAR REQUIREMENT

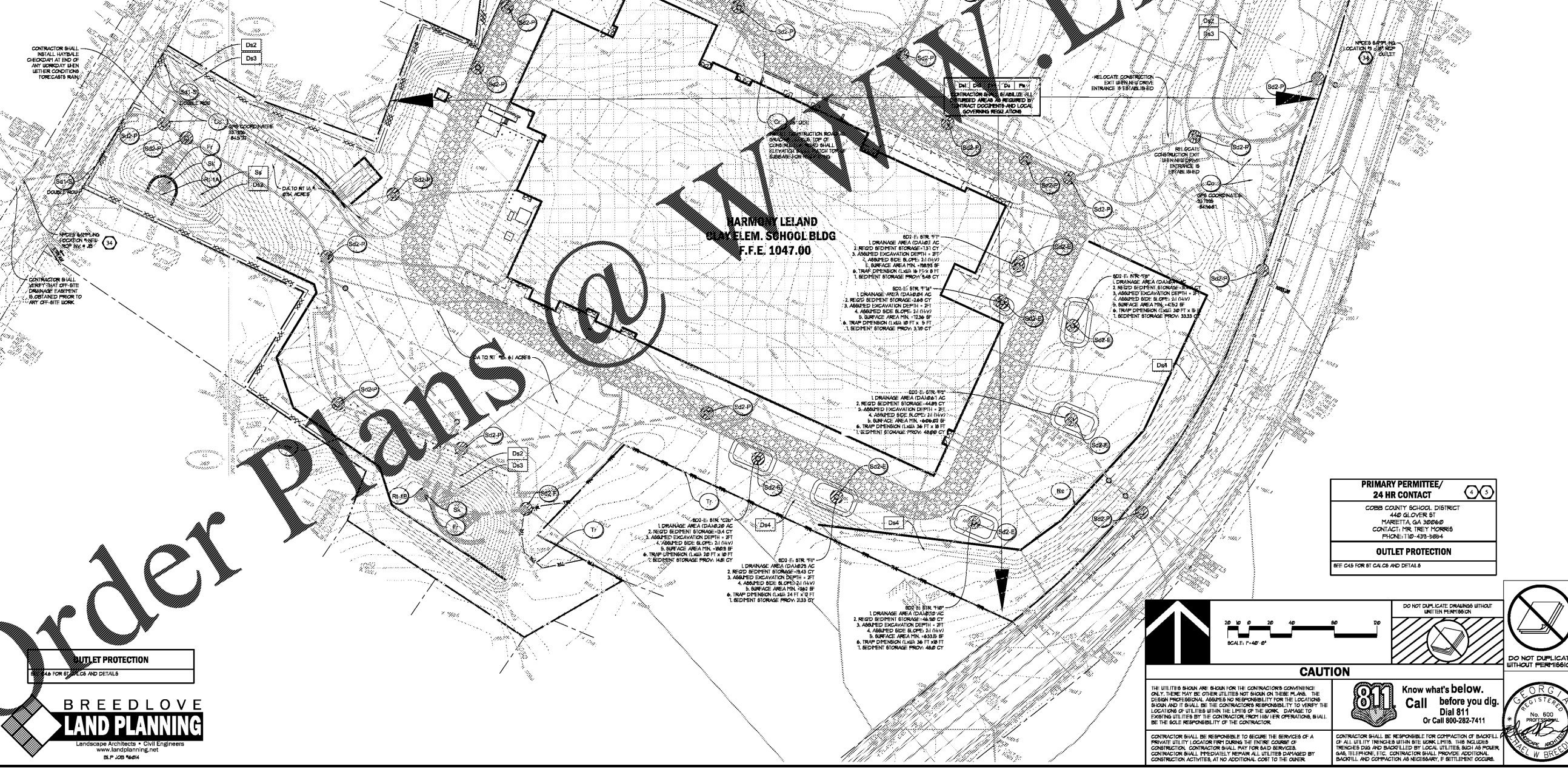
CONTRACTOR SHALL INSTALL DAM FLOC/GEL BARS IN THE INVERT OF EACH STORM STRUCTURE AS PART OF INITIAL BMP INSTALLATION

UNIFORM CODING SYSTEM 49

SEE SHEET C42 FOR UNIFORM CODING SYSTEM FOR SOIL EROSION AND SEDIMENT CONTROL PRACTICES

SLOPE STABILIZATION NOTE

SOIL STABILIZATION MATTING (SM) SHALL BE APPLIED TO ALL SLOPES 3:1 & STEEPER



ES&PC DESIGN PROFESSIONAL'S CERTIFICATION STATEMENT

I CERTIFY UNDER PENALTY OF LAW THAT THIS PLAN WAS PREPARED AFTER A SITE VISIT TO THE LOCATIONS DESCRIBED HEREIN BY MYSELF OR MY AUTHORIZED AGENT, UNDER MY SUPERVISION.

SIGNED: *[Signature]* DATE: 1-11-2018

CERTIFIED DESIGN PROFESSIONAL LEVEL 1 DESIGNER
 LICENSE CERTIFICATION NO. 10000002969
 EXPIRATION DATE: 12-31-2020
 BREEDLOVE LAND PLANNING, INC.

DRAWING ISSUE RECORD

DATE	REVISIONS	NO.
1-11-18	ISSUE TO BID	

HARMONY LELAND ELEMENTARY SCHOOL REPLACEMENT ELEMENTARY SCHOOL

6330 HARTLEY ROAD, SUITE 100
 HARTLEY, GA 30068
 FOR COBBS COUNTY SCHOOL DISTRICT
 COBBS COUNTY, GA
 C43 PROJECT NO. 160871 DOE FACILITY CODE

EROSION, SEDIMENTATION & POLLUTION PLAN-GRADING PHASE "B"

cunningham, matthews & moore

DATE: 2018-09-01
 JOB NO.: 1611-0001-16
 DATE: 2018-09-01
 phone (404) 873-2152
 cummingham, matthews & moore, architects, inc. - 2011 manchester street, n.e. - atlanta, georgia

BREEDLOVE LAND PLANNING

Landscaping Architects • Civil Engineers
 www.landplanning.net
 B.L.P. JOB 16084

PRIMARY PERMITTEE/ 24 HR CONTACT

COBBS COUNTY SCHOOL DISTRICT
 440 GLOVER ST
 MARIETTA, GA 30068
 CONTACT: MR. TREY MOORE
 PHONE: 770-439-5854

OUTLET PROTECTION

SEE C43 FOR 81 CALCS AND DETAILS

CAUTION

DO NOT DUPLICATE DRAWINGS WITHOUT WRITTEN PERMISSION

DO NOT DUPLICATE WITHOUT PERMISSION

811 Know what's below. Call before you dig. Dial 811 Or Call 800-282-7411

THE UTILITIES SHOWN ARE SHOWN FOR THE CONTRACTOR'S CONVENIENCE ONLY. THERE MAY BE OTHER UTILITIES NOT SHOWN ON THESE PLANS. THE DESIGN PROFESSIONAL ASSUMES NO RESPONSIBILITY FOR THE LOCATIONS SHOWN AND IT SHALL BE THE CONTRACTOR'S RESPONSIBILITY TO VERIFY THE LOCATIONS OF UTILITIES WITHIN THE LIMITS OF THE WORK. DAMAGE TO EXISTING UTILITIES BY THE CONTRACTOR FROM HIS/HER OPERATIONS, SHALL BE THE SOLE RESPONSIBILITY OF THE CONTRACTOR.

CONTRACTOR SHALL BE RESPONSIBLE TO SECURE THE SERVICES OF A PRIVATE UTILITY LOCATOR PRIOR DURING THE ENTIRE COURSE OF CONSTRUCTION. CONTRACTOR SHALL PAY FOR SAID SERVICES. CONTRACTOR SHALL IMMEDIATELY REPAIR ALL UTILITIES DAMAGED BY CONSTRUCTION ACTIVITIES, AT NO ADDITIONAL COST TO THE OWNER.

CONTRACTOR SHALL BE RESPONSIBLE FOR CORRECTION OF BACKFILL OF ALL UTILITY TRENCHES WITHIN 875 WORKING LIMITS. THIS INCLUDES TRENCHES DUG AND BACKFILLED BY LOCAL UTILITIES SUCH AS POWER, GAS, TELEPHONE, ETC. CONTRACTOR SHALL PROVIDE ADDITIONAL BACKFILL AND CORRECTION AS NECESSARY, IF SETTLEMENT OCCURS.

GEORGIA REGISTERED PROFESSIONAL ENGINEER
 No. 630
 HARMONY W. BREEDLOVE

C4.3