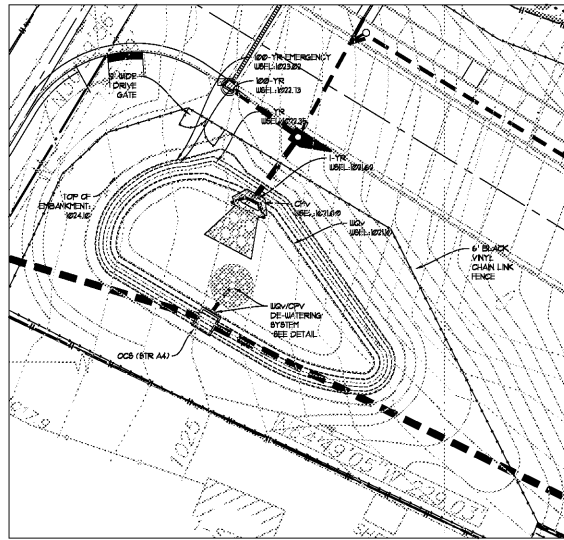


| DRAWING ISSUE RECORD |              |     |
|----------------------|--------------|-----|
| DATE                 | REVISIONS    | NO. |
| 11-18                | ISSUE TO BID |     |

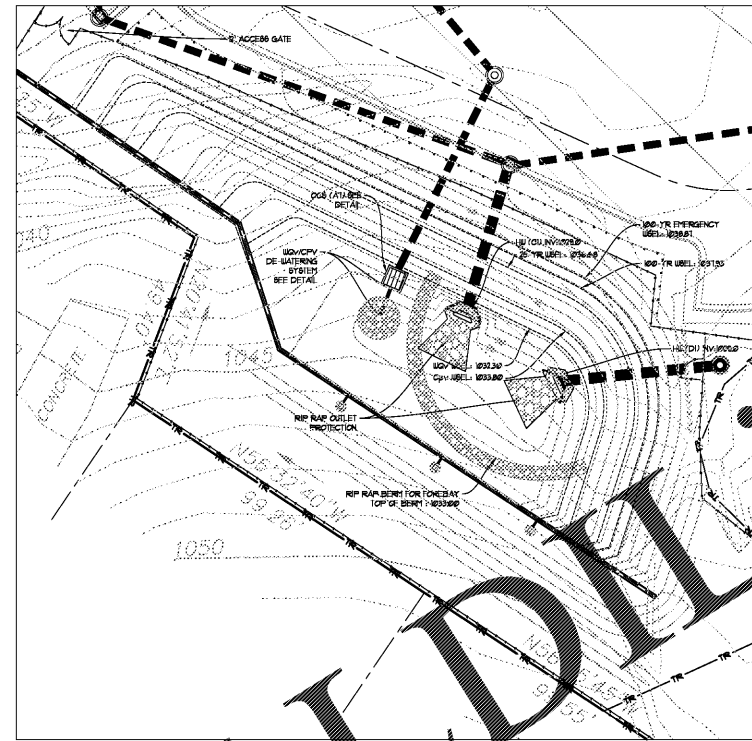


SMF 1A ENLARGEMENT

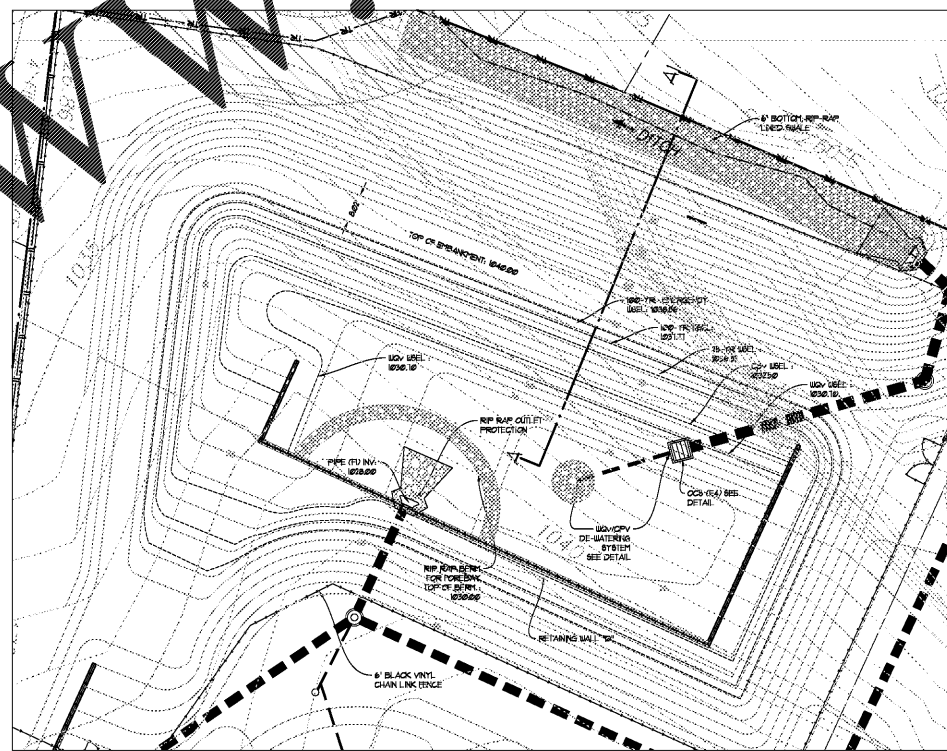
| DETENTION & WATER QUALITY POND SMF 1A |           |                       |
|---------------------------------------|-----------|-----------------------|
| STORM EVENT                           | ELEVATION | STORAGE VOLUME (C.F.) |
| Facility Bottom                       | 1020.00   |                       |
| WQV                                   | 1021.10   | 1,670                 |
| CPV                                   | 1021.60   | 3,008                 |
| 1-Year                                | 1021.62   | 3,057                 |
| 2-Year                                | 1021.65   | 3,187                 |
| 5-Year                                | 1021.83   | 3,927                 |
| 10-Year                               | 1022.07   | 4,114                 |
| 25-Year                               | 1022.35   | 4,932                 |
| 50-Year                               | 1022.55   | 5,512                 |
| 100-Year                              | 1022.73   | 6,010                 |
| 100-Year Emergency                    | 1023.02   | 6,804                 |
| TOP OF DIKE/WALL                      | 1024.10   | 10,853                |
| FREEBOARD                             | 1.03      |                       |

| DETENTION & WATER QUALITY POND SMF 1B |           |                       |
|---------------------------------------|-----------|-----------------------|
| STORM EVENT                           | ELEVATION | STORAGE VOLUME (C.F.) |
| Basin Bottom                          | 1028.00   |                       |
| WQV                                   | 1032.30   | 9,699                 |
| CPV                                   | 1033.80   | 16,456                |
| 1-Year                                | 1034.03   | 17,589                |
| 2-Year                                | 1034.35   | 19,306                |
| 5-Year                                | 1035.07   | 23,296                |
| 10-Year                               | 1035.77   | 27,543                |
| 25-Year                               | 1036.68   | 33,559                |
| 50-Year                               | 1037.32   | 38,242                |
| 100-Year                              | 1037.93   | 43,008                |
| 100-Year Emergency                    | 1038.87   | 51,608                |
| TOP OF DIKE/WALL                      | 1040.00   |                       |
| FREEBOARD                             | 1.13      |                       |

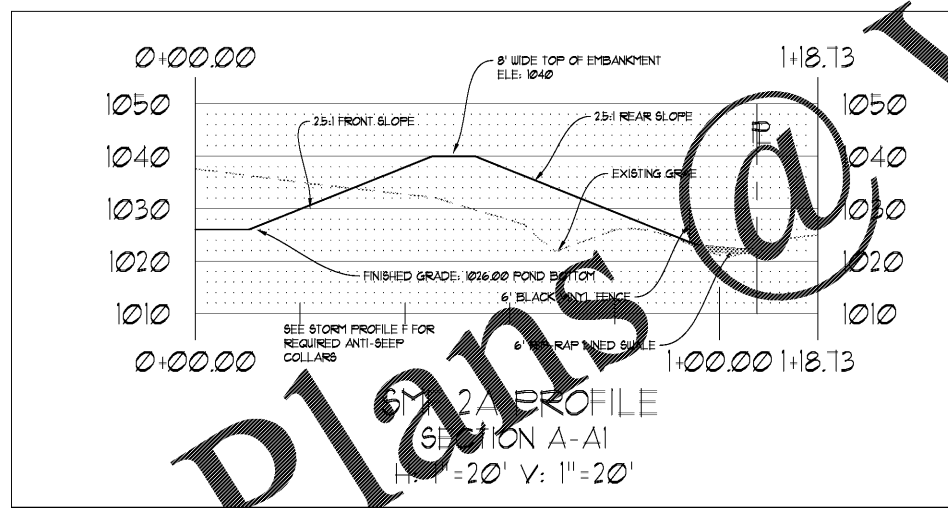
| DETENTION & WATER QUALITY POND SMF 2 |           |                       |
|--------------------------------------|-----------|-----------------------|
| STORM EVENT                          | ELEVATION | STORAGE VOLUME (C.F.) |
| Basin Bottom                         | 1026.00   |                       |
| WQV                                  | 1030.70   | 21,215                |
| CPV                                  | 1032.50   | 34,811                |
| 1-Year                               | 1032.89   | 37,791                |
| 2-Year                               | 1033.35   | 41,813                |
| 5-Year                               | 1034.37   | 51,194                |
| 10-Year                              | 1035.24   | 60,031                |
| 25-Year                              | 1036.08   | 69,599                |
| 50-Year                              | 1037.08   | 82,031                |
| 100-Year                             | 1037.77   | 91,946                |
| 100-Year Emergency                   | 1038.86   | 108,568               |
| TOP OF DIKE/WALL                     | 1040.00   |                       |
| FREEBOARD                            | 1.14      |                       |



SMF 1B ENLARGEMENT



SMF 2 ENLARGEMENT



SMF 2A PROFILE  
SECTION A-A1  
H:V = 20' : 1" = 20'

**Order Plans @**

**BREEDLOVE LAND PLANNING**  
Landscape Architects • Civil Engineers  
www.landplanning.net  
B.P. JOB 16414

**ENGINEER'S RUNOFF CONTROL CERTIFICATION:**

THE PROPOSED EROSION AND RUNOFF CONTROL MEASURES ARE IN COMPLIANCE WITH THE CORDE COUNTY EROSION CONTROL AND FLOOD PROTECTION REGULATIONS AND WILL NOT INCREASE THE RAINFALL RUNOFF FROM THE SITE FOR RAINFALLS WITH A RETURN PERIOD OF 2, 5, 10, 25, 50 AND 100 YEARS.

SIGNED: *[Signature]* DATE: 10-30-2018

**CAUTION**

THE UTILITIES SHOWN ARE SHOWN FOR THE CONTRACTOR'S CONFORMANCE ONLY. THERE MAY BE OTHER UTILITIES NOT SHOWN ON THESE PLANS. THE DESIGN PROFESSIONAL ASSUMES NO RESPONSIBILITY FOR THE LOCATIONS SHOWN AND IT SHALL BE THE CONTRACTOR'S RESPONSIBILITY TO VERIFY THE LOCATIONS OF UTILITIES WITHIN THE LIMITS OF THE WORK. DAMAGE TO EXISTING UTILITIES BY THE CONTRACTOR FROM HIS/HER OPERATIONS, SHALL BE THE SOLE RESPONSIBILITY OF THE CONTRACTOR.

CONTRACTOR SHALL BE RESPONSIBLE TO BEGINS THE SERVICES OF A PRIVATE UTILITY LOCATOR FIRM DURING THE ENTIRE COURSE OF CONSTRUCTION. CONTRACTOR SHALL PAY FOR SAID SERVICES. CONTRACTOR SHALL IMMEDIATELY REPAIR ALL UTILITIES DAMAGED BY CONSTRUCTION ACTIVITIES, AT NO ADDITIONAL COST TO THE OWNER.

CONTRACTOR SHALL BE RESPONSIBLE FOR CORRECTION OF BACKFILL OF ALL UTILITY TRENCHES WITHIN 875' WORK LIMITS. THIS INCLUDES TRENCHES DUG AND BACKFILLED BY LOCAL UTILITIES, SUCH AS POWER, GAS, TELEPHONE, ETC. CONTRACTOR SHALL PROVIDE ADDITIONAL BACKFILL AND CORRECTION AS NECESSARY, IF SETTLEMENT OCCURS.

811 Know what's below. Call before you dig. Dial 811. Or Call 800-282-7411

**STORMWATER MANAGEMENT ENLARGEMENTS**

HARMONY LELAND-CRYSTAL  
REPLACEMENT ELEMENTARY SCHOOL  
6390 HARTLEY ROAD, SUITE 100  
HABLETON, GA 30146  
FOR CORDE COUNTY SCHOOL DISTRICT  
CORDE COUNTY, GA  
CCSD PROJECT No. 16081 / DOE FACILITY CODE 16081

DATE: 2018-09-01  
JOB NO.: SHL-2018-16  
DWN. BY: KD

**cunningham, forehand, matthews & moore, architects, inc.** - atlanta, georgia 30324 - phone (404) 873-2152

**C3.5**