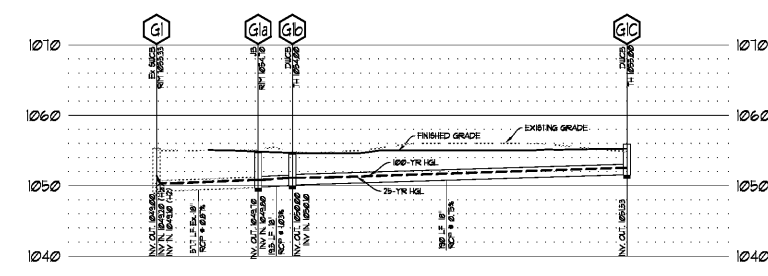
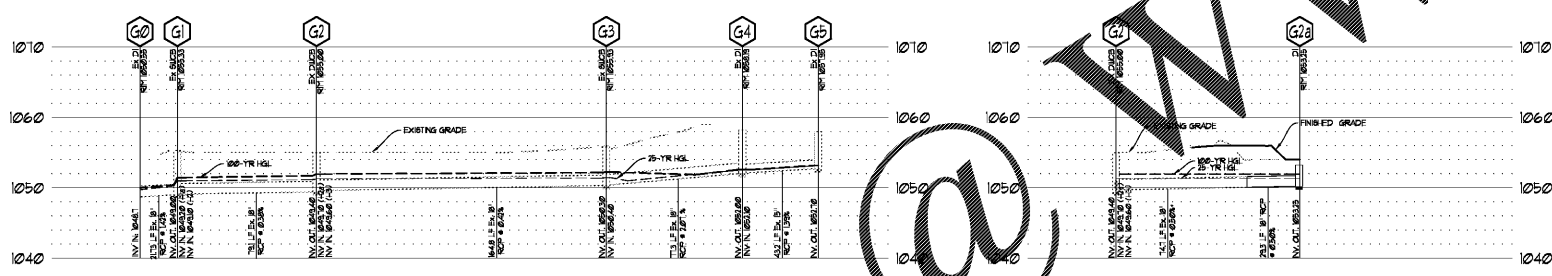
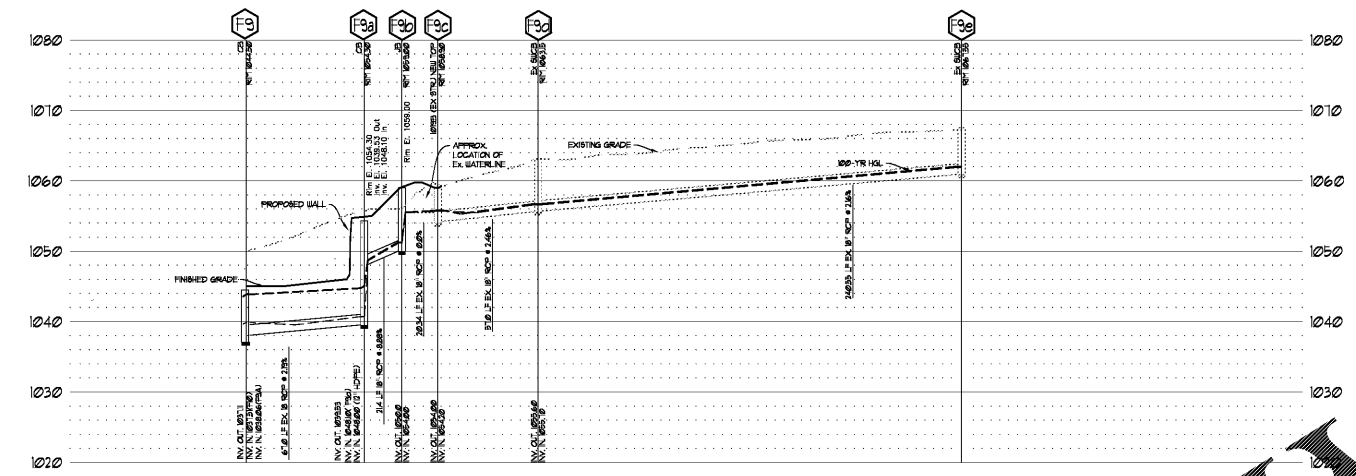
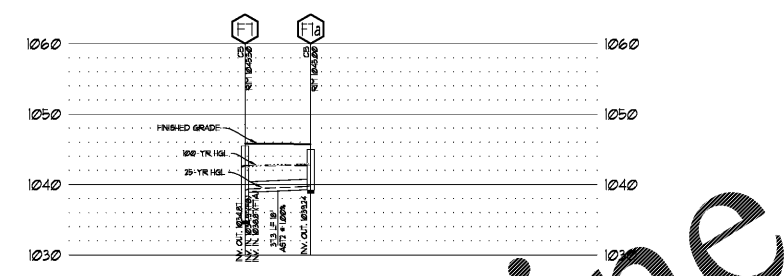
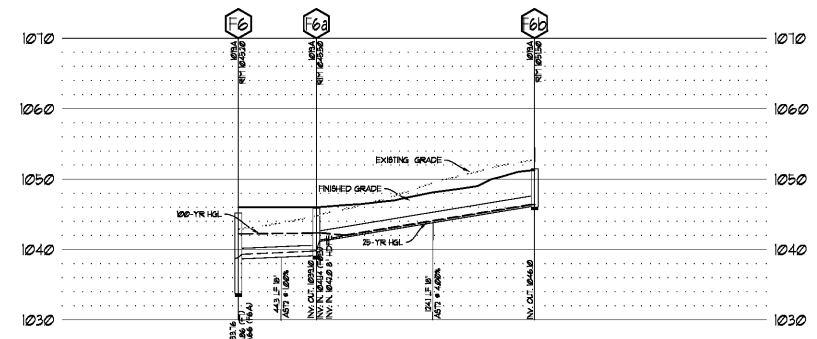
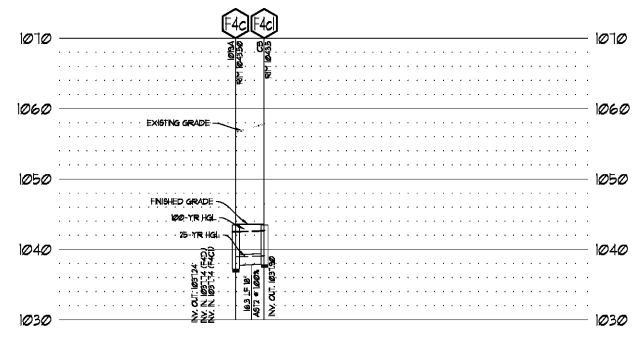


DRAWING ISSUE RECORD		
DATE	REVISIONS	NO.
11-1-18	ISSUE TO BID	



COBB COUNTY STORMWATER NOTES:

- THE DEPARTMENT OF TRANSPORTATION STATE OF GEORGIA STANDARD TYPE CULVERT NUMBER 10000 LATEST EDITION SHALL BE USED IN DETERMINING THE CLASS OF REINFORCED CONCRETE PIPE OR GAGE OF CORRUGATED STEEL PIPE OR TYPE 2 CORRUGATED ALUMINUM PIPE UNDER FILL AND THE METHOD OF BACK-FILLING THE MINIMUM GAGE FOR CORRUGATED STEEL PIPE ALLOWED UNDER COBB COUNTY STANDARDS IS 3 (60 INCHES). ALL CORRUGATED STEEL PIPES ARE TO BE FULL COATED, THE FINISH GAGE FOR TYPE 2 CORRUGATED ALUMINUM PIPE UNDER COBB COUNTY STANDARDS IS 4 (48 INCHES).
- FIELD JOINTS FOR CORRUGATED PIPE SHALL BE MADE WITH BANDS OF THE SAME BASE METAL AND COATING AS THE CORRUGATED PIPE. BANDS SHALL BE OF THE HIGHER TYPE DESIGNED TO FULLY ENGAGE AT LEAST ONE ANGLE OR CORNER AT THE END OF EACH CORRUGATED PIPE. AROUND THE ENTIRE CIRCUMFERENCE. BANDS WITH SMALL EQUAL. THE CENTER LINE LENGTH OF FOUR (4) ANGULAR CORRUGATIONS. BANDS SHALL CONFORM TO CURRENT ASHRAE/IBDO INDUSTRY STANDARDS AS TO SECURING BOLTS, THEIR NUMBER AND PLACEMENT.
- CONCRETE PIPE SECTIONS MAY BE JOINED WITH BITUMINOUS PLASTIC GASKET JOINTS. RUBBER-TYPE GASKET JOINTS, CURBING GASKET JOINTS OR PRE-FORMED PLASTIC GASKET JOINTS, IS BITUMINOUS PLASTIC GASKET JOINTS. THE ANNUAL SPACE SHALL BE FILLED WITH JOINT MATERIAL, AND THE INSIDE OF EACH JOINT LINED WITH RUBBER-TYPE GASKETS, AND PRE-FORMED PLASTIC GASKET JOINTS SHALL BE INSTALLED IN ACCORDANCE WITH THE MANUFACTURER'S RECOMMENDATIONS.
- ALL CATCH BASINS, DROP INLETS OR OTHER DRAINAGE STRUCTURES SHALL COMPLY WITH THE LATEST STANDARDS APPROVED AND PROMULGATED BY THE GEORGIA DEPARTMENT OF TRANSPORTATION IN STANDARDS SPECIFICATIONS FOR CONSTRUCTION OF ROADS AND BRIDGES, LATEST EDITION.
- INSULATOR HOUSING WITHIN THE UNDERGROUND CHAMBER SYSTEMS SHALL BE INSPECTED FOR SEDIMENT ACCUMULATION DURING CONSTRUCTION AFTER EACH RAINFALL EVENT. SEDIMENT SHALL BE REMOVED IMMEDIATELY TO AVOID RE-SUSPENSION AND CONTAMINATION OF THE GRAVEL BED.
- USE OF HOPE REQUIRES THE FOLLOWING:
 - SMALLER BACKFILL TO TOP OF THE PIPE
 - DEPTH NO GREATER THAN TEN (10) FEET AS MEASURED TO INVERT OF PIPE
 - INSTALLATION MUST BE COBB COUNTY RISK-OF-SLIP
 - WARRANTY BELL AND SPOOT GASKET JOINTS MUST BE PROVIDED
 - 3/4 INCH DIAMETER OR GREATER MUST BE INSPECTED AND CERTIFIED BY A GEOTECHNICAL ENGINEER OR A MANUFACTURER'S REPRESENTATIVE
 - SPROCKLE PIPE REQUIRED
- MINIMUM 3 GAGE: 3000' OR MINIMUM 4 GAGE: TYPE 2 ALUMINUM CMP
- ALL STORMWATER INFRASTRUCTURES ON THIS SITE ARE PRIVATELY OWNED, AND ANY MAINTENANCE OR REPLACEMENT IS THE OWNER'S RESPONSIBILITY.
- SUBMIT AS-BUILT DRAWINGS OF DRAINAGE, OUTLET CONTROL STRUCTURE AND STORM DRAIN PIPE SYSTEM TO COBB COUNTY. ALL AS-BUILT SURVEYS OF STORMWATER INFRASTRUCTURE MUST BE SUBMITTED TO COBB COUNTY STORMWATER MANAGEMENT 15 BUSINESS DAYS PRIOR TO FINAL PLAT APPROVAL OR PRIOR TO THE ISSUANCE OF A CERTIFICATE OF OCCUPANCY FOR COMMERCIAL SITES. A TABLE LISTING THE STRUCTURE NAME, NORTHING, EASTING, PIPE MATERIAL, INVERT, AND TOP ELEVATIONS FOR EACH STRUCTURE MUST BE INCLUDED ON THE AS-BUILT DRAWINGS SUBMITTED TO COBB COUNTY STORMWATER MANAGEMENT. NORTHING AND EASTING SHOULD BE BASED ON STATE PLANE COORDINATE SYSTEM. PROVIDE THE PROJECT LAND DISTURBANCE PERMIT (LDP) NUMBER ON THE AS-BUILT DRAWINGS.
- AS-BUILT CERTIFICATION IS REQUIRED FOR DETENTION WATER QUALITY POND, PRIOR TO FINAL PLAT OR CERTIFICATE OF OCCUPANCY.
- AS-BUILT RETAINING WALL CERTIFICATION IS REQUIRED FOR ALL DETENTION / WATER QUALITY WALLS, PRIOR TO FINAL PLAT APPROVAL OR CERTIFICATE OF OCCUPANCY.

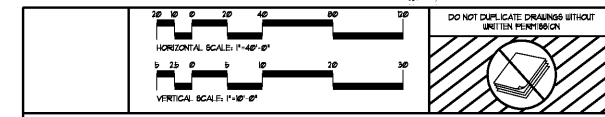
PIPE PROFILE LEGEND

SCP	EXISTING GRADE
DIP	PROPOSED GRADE
HOPE	REINFORCED CONCRETE PIPE (CLASS IV)
AS17	DUCTILE IRON PIPE (CLASS 50)
AS17-60	HIGH-DENSITY POLYETHYLENE PIPE
	ALUMINUM STEEL TYPE 2
	ALUMINUM STEEL TYPE 2 SMOOTH BORE (RANSOM'S #602)
PVC	POLYVINYL CHLORIDE PIPE (SCHEDULE 40)
HJ	HEADWALL
DI	DROP INLET (FEDERAL TOP)
JB	JUNCTION BOX
SCB	ENGINEERING CATCH BASIN
SCUB	DOUBLE-URNG CATCH BASIN
CS	CATCH BASIN
BI	BELT LINE CATCH BASIN
IBPA	CURB INLET (GA. DOT STD)
FE	FLARED END SECTION
SEB	SAFETY END SECTION
INV.	INVERT ELEVATION
HGL	HYDRAULIC GRADE LINE

ENGINEER'S RUNOFF CONTROL CERTIFICATION:

THE PROPOSED EROSION AND RUNOFF CONTROL MEASURES ARE IN COMPLIANCE WITH THE COBB COUNTY SEDIMENT CONTROL AND FLOOD PROTECTION REGULATIONS AND WILL NOT INCREASE THE RUNOFF RATE FROM THE SITE FOR RAINFALLS WITH A RETURN PERIOD OF 1, 5, 10, 25, 50 AND 100 YEARS.

SIGNED: *[Signature]* DATE: 10-30-2018



CAUTION

THE UTILITIES SHOWN ARE BASED ON THE CONTRACTOR'S CONFORMANCE ONLY. THERE MAY BE OTHER UTILITIES NOT SHOWN ON THESE PLANS. THE DESIGN PROFESSIONAL ASSUMES NO RESPONSIBILITY FOR THE LOCATIONS OF UTILITIES WITHIN THE LIMITS OF THE WORK. DAMAGE TO EXISTING UTILITIES BY THE CONTRACTOR FROM HIS/HER OPERATIONS, SHALL BE THE SOLE RESPONSIBILITY OF THE CONTRACTOR.

CONTRACTOR SHALL BE RESPONSIBLE TO SECURE THE SERVICES OF A PRIVATE UTILITY LOCATOR PRIOR DURING THE ENTIRE COURSE OF CONSTRUCTION. CONTRACTOR SHALL PAY FOR SAID SERVICES. CONTRACTOR SHALL IMMEDIATELY REPAIR ALL UTILITIES DAMAGED BY CONSTRUCTION ACTIVITIES, AT NO ADDITIONAL COST TO THE OWNER.

CONTRACTOR SHALL BE RESPONSIBLE FOR COMPACTION OF BACKFILL OF ALL UTILITY TRENCHES WITHIN 8 FEET LIMITS. THIS INCLUDES TRENCHES DUG AND BACKFILLED BY LOCAL UTILITIES SUCH AS POWER, GAS, TELEPHONE, ETC. CONTRACTOR SHALL PROVIDE ADDITIONAL BACKFILL AND COMPACTION AS NECESSARY, IF SETTLEMENT OCCURS.



STORM PIPE PROFILES

HARMONY LELAND-CRYSTAL
 REPLACEMENT ELEMENTARY SCHOOL
 6394 FARMLEY ROAD, SUITE 800
 HABLETON, GA 30126
 FOR COBB COUNTY SCHOOL DISTRICT
 COBB COUNTY, GA
 COBB PROJECT NO. A6884 / DOE FACILITY CODE
 DATE: 2018-09-01
 DWN. BY: KD

cunningham, forehand, matthews & moore

cunningham, forehand, matthews & moore, architects, inc. - 2011 manchester street, n.e. - atlanta, georgia 30324 - phone (404) 873-2152

C3.4

Order Plans

BREEDLOVE LAND PLANNING
 Landscape Architects • Civil Engineers
 www.landplanning.net
 B.P. JOB 16414