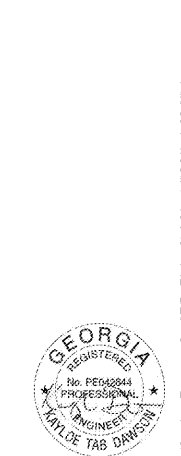
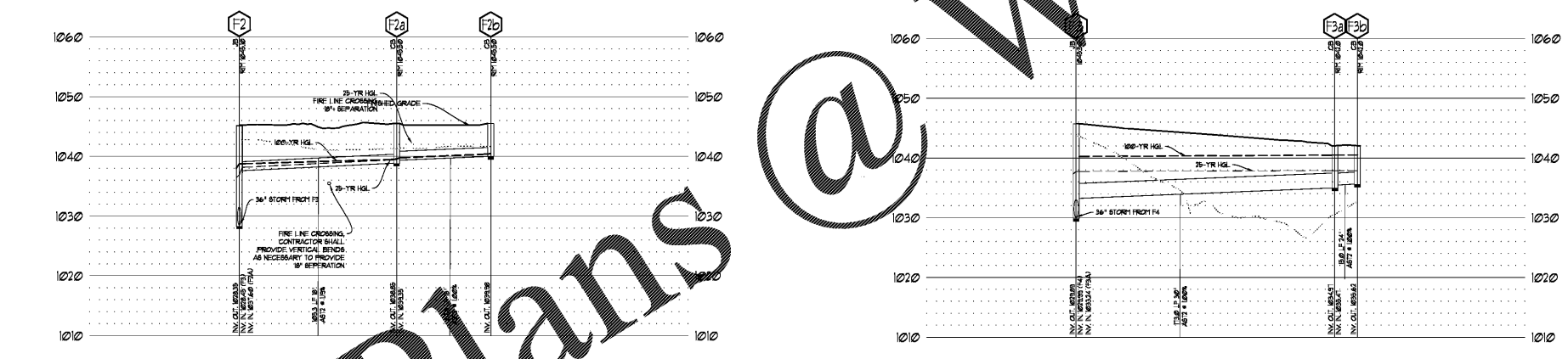
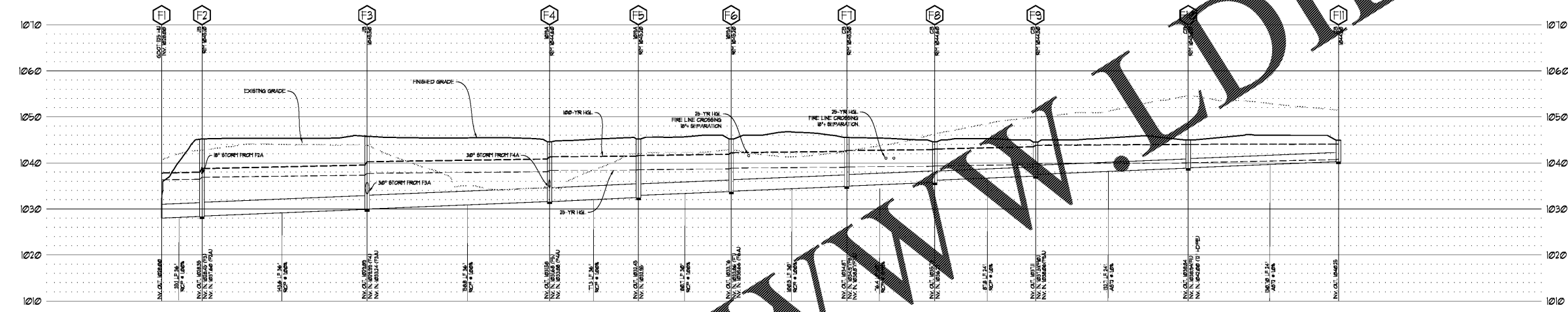
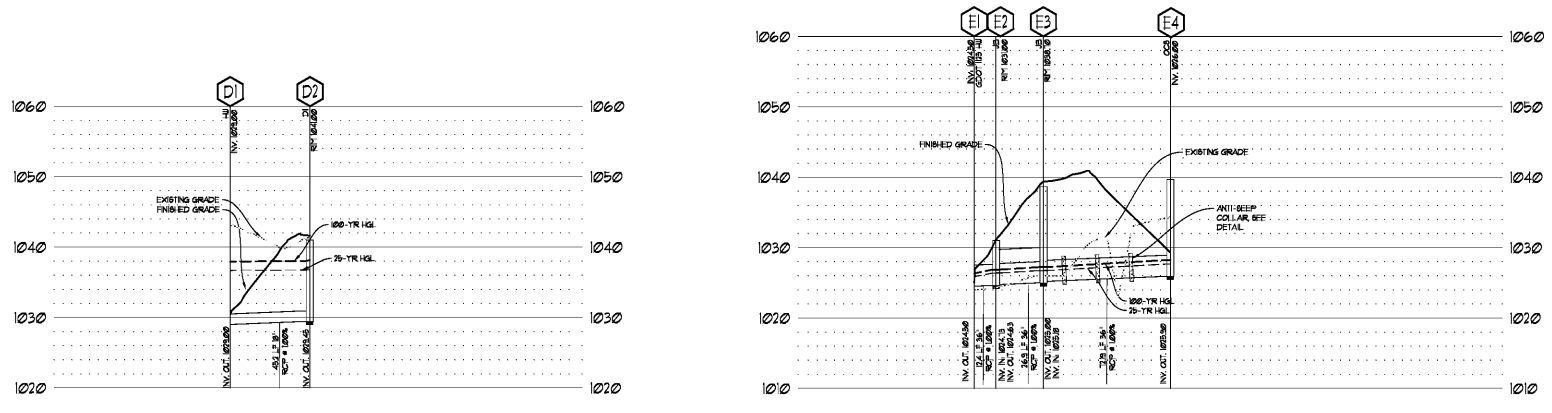


PIPE PROFILE LEGEND	
EXISTING GRADE	EXISTING GRADE
PROPOSED GRADE	PROPOSED GRADE
REINFORCED CONCRETE PIPE (CLASS IV)	REINFORCED CONCRETE PIPE (CLASS IV)
DUCTILE IRON PIPE (CLASS SB)	DUCTILE IRON PIPE (CLASS SB)
HIGH-DENSITY POLYETHYLENE PIPE	HIGH-DENSITY POLYETHYLENE PIPE
ALUMINIZED STEEL TYPE 2 SMOOTH BORE	ALUMINIZED STEEL TYPE 2 SMOOTH BORE
(FINNINGS = 80%)	(FINNINGS = 80%)
POLYVINYL CHLORIDE PIPE (SCHEDULE 40)	POLYVINYL CHLORIDE PIPE (SCHEDULE 40)
HEADWALL	HEADWALL
DROP INLET (PRECAST TOP)	DROP INLET (PRECAST TOP)
JUNCTION BOX	JUNCTION BOX
SINGLE URG CATCH BASIN	SINGLE URG CATCH BASIN
DOUBLE URG CATCH BASIN	DOUBLE URG CATCH BASIN
CATCH BASIN	CATCH BASIN
SEE URG CATCH BASIN	SEE URG CATCH BASIN
CURB NILEY (S.A.D.O.T. STD.)	CURB NILEY (S.A.D.O.T. STD.)
FLARED END SECTION	FLARED END SECTION
SAFETY END SECTION	SAFETY END SECTION
INVERT ELEVATION	INVERT ELEVATION
HYDRAULIC GRADE LINE	HYDRAULIC GRADE LINE

DRAWING ISSUE RECORD	
DATE	REVISIONS
11-1-18	ISSUE TO BID

HARMONY LELAND-CRYSTAL  
 REPLACEMENT ELEMENTARY SCHOOL  
 6396 HARTLEY AVENUE, SUITE 800  
 MABLETON, GA 30128  
 FOR COBB COUNTY SCHOOL DISTRICT  
 COBB COUNTY, GA  
 CS&D PROJECT NO. A68847 / DDC FACILITY CODE  
 JOB NO. 1811-0001-18  
 DATE 2018-08-01  
 DWN. BY KD

STORM PIPE PROFILES

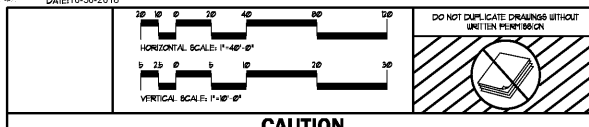


- COBB COUNTY STORMWATER NOTES:**
- THE DEPARTMENT OF TRANSPORTATION, STATE OF GEORGIA STANDARD TYPE CULVERT NUMBER 8000, LATEST EDITION SHALL BE USED IN DETERMINING THE CLASS OF REINFORCED CONCRETE PIPE OR GAGE OF CORRUGATED STEEL PIPE OR TYPE 2 CORRUGATED ALUMINUM PIPE UNDER FILL, AND THE METHOD OF BACK-FILLING. THE MINIMUM GAGE FOR CORRUGATED STEEL PIPE ALLOWED UNDER COBB COUNTY STANDARDS IS 18 GA. UNLESS ALL CORRUGATED STEEL PIPE ARE TO BE FULLY COATED, THE MINIMUM GAGE FOR TYPE 2 CORRUGATED ALUMINUM PIPE UNDER COBB COUNTY STANDARDS IS 14 GA. (80% FINNINGS).
  - FIELD JOINTS FOR CORRUGATED PIPE SHALL BE MADE WITH BANDS OF THE SAME BASE METAL AND COATING AS THE CORRUGATED PIPE. BANDS SHALL BE OF THE THICKER TYPE DESIGNED TO FIT TIGHTLY. AT LEAST ONE ANNUAR CORROSION AT THE END OF EACH CORRUGATED PIPE AROUND ITS ENTIRE CIRCUMFERENCE. MINIMUM BAND WIDTH SHALL EQUAL THE CONTINUING LENGTH OF FOUR (4) ANNUAR CORROSION BANDS SHALL CONFORM TO CURRENT ASTM/ASTM INDUSTRIES STANDARDS AS TO JOINING BOLTS, THEIR NUMBER AND PLACEMENT.
  - CONCRETE PIPE SECTIONS MAY BE JOINED WITH BITUMINOUS PLASTIC CEMENT, RUBBER-TYPE GASKET JOINTS, G-RING GASKET JOINTS OR PRE-FORMED PLASTIC GASKET JOINTS. IN BITUMINOUS PLASTIC CEMENT JOINTS, THE ANNUAR SPACE SHALL BE FILLED WITH ANNUAR MATERIAL AND THE INSIDE OF EACH JOINT SHIPED SMOOTH. RUBBER-TYPE G-RING AND PRE-FORMED PLASTIC GASKET JOINTS SHALL BE INSTALLED IN ACCORDANCE WITH THE MANUFACTURERS RECOMMENDATIONS.
  - ALL CATCH BASINS, DROP INLETS OR OTHER DRAINAGE STRUCTURES SHALL COMPLY WITH THE LATEST STANDARDS APPROVED AND PROMULGATED BY THE GEORGIA DEPARTMENT OF TRANSPORTATION IN STANDARDS SPECIFICATIONS FOR CONSTRUCTION OF ROADS AND BRIDGES, LATEST EDITION.
  - ISOLATION ROUS WITHIN THE UNDERGROUND GASKER SYSTEMS SHALL BE INSPECTED FOR BEDDING ACCUMULATION DURING CONSTRUCTION AFTER EACH MANHOLE EVENT. BEDDING SHALL BE REMOVED IMMEDIATELY TO AVOID RE-SUSPENSION AND CONTAMINATION OF THE GRAVEL BED.
  - USE OF HOPE REQUIRES THE FOLLOWING:
    - 1. GROUND ANCHORS TO TOP OF THE PIPE
    - 2. DEPTH NO GREATER THAN TEN (10) FEET AS MEASURED TO INVERT OF PIPE
    - 3. ANCHORS MUST BE CHIEFES GRANT-FISH-OR-BAY
    - 4. SATURATED BELL AND DRIPGOT GASKETS MUST BE PROVIDED
    - 5. 36 INCH DIAMETER OR GREATER MUST BE INSPECTED AND CERTIFIED BY A GEOTECHNICAL ENGINEER OR A MANUFACTURERS REPRESENTATIVE
    - 6. SMOOTH BORE PIPE REQUIRED
  - MINIMUM 2 GAGE (COOP) OR MINIMUM 14 GAGE TYPE 2 ALUMINIZED COP
  - ALL STORMWATER INFRASTRUCTURES ON THIS SITE ARE PRIVATELY OWNED, AND ANY MAINTENANCE OR REPLACEMENT IS THE OWNER'S RESPONSIBILITY.
  - AS-BUILT DRAWINGS OF DAM WALLS, OUTLET CONTROL STRUCTURE AND STORM DRAIN PIPE SYSTEM TO COBB COUNTY. ALL AS-BUILT DRAWINGS OF STORMWATER INFRASTRUCTURE MUST BE SUBMITTED TO COBB COUNTY STORMWATER MANAGEMENT (770) 428-6438 PRIOR TO FINAL PLAT APPROVAL OR PRIOR TO THE ISSUANCE OF A CERTIFICATE OF OCCUPANCY FOR COMMERCIAL WITH A TAB LISTING THE STRUCTURE NAME, NOTHING EXISTING, PIPE MATERIAL, INVERT, AND TOP ELEVATIONS FOR EACH STRUCTURE MUST BE INCLUDED ON THE AS-BUILT DRAWINGS SUBMITTED TO COBB COUNTY STORMWATER MANAGEMENT. NOTHING AND DRAWINGS SHOULD BE BASED ON BEST PLANE COORDINATE SYSTEM, PROVIDE THE PROJECT LAND DISTURBANCE PERMIT (LDP) NUMBER ON THE AS-BUILT DRAWINGS.
  - AS-BUILT CERTIFICATION IS REQUIRED FOR DETENTION WATER QUALITY POND, PRIOR TO FINAL PLAT OR CERTIFICATE OF OCCUPANCY.
  - AS-BUILT RETAINING WALL CERTIFICATION IS REQUIRED FOR ALL DETENTION / WATER QUALITY WALLS, PRIOR TO FINAL PLAT APPROVAL OR CERTIFICATE OF OCCUPANCY.

**ENGINEER'S RUNOFF CONTROL CERTIFICATION:**

THE PROPOSED EROSION AND RUNOFF CONTROL MEASURES ARE IN COMPLIANCE WITH THE COBB COUNTY BEDDING CONTROL, AND FLOOD PROTECTION REGULATIONS AND WILL NOT INCREASE THE RUNOFF RATE FROM THE SITE FOR RAINFALL WITH A RETURN PERIOD OF 2, 5, 10, 25, 50 AND 100 YEARS.

SIGNED: *Matthew S. Moore* DATE: 10-30-2018

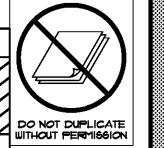


**CAUTION**

THE UTILITIES SHOWN ARE SHOWN FOR THE CONTRACTOR'S CONVENIENCE ONLY. THERE MAY BE OTHER UTILITIES NOT SHOWN ON THESE PLANS. THE DESIGN PROFESSIONAL ASSUMES NO RESPONSIBILITY TO VERIFY THE LOCATION OF UTILITIES WITHIN THE LIMITS OF THE WORK. DAMAGE TO EXISTING UTILITIES BY THE CONTRACTOR FROM HIS/HER OPERATIONS, SHALL BE THE SOLE RESPONSIBILITY OF THE CONTRACTOR.

CONTRACTOR SHALL BE RESPONSIBLE TO SECURE THE SERVICES OF A PRIVATE UTILITY LOCATOR PRIOR TO ANY CONSTRUCTION. CONTRACTOR SHALL PAY FOR SAID SERVICES. CONTRACTOR SHALL IMMEDIATELY REPAIR ALL UTILITIES DAMAGED BY CONSTRUCTION ACTIVITIES, AT NO ADDITIONAL COST TO THE OWNER.

CONTRACTOR SHALL BE RESPONSIBLE FOR COMPACTION OF BACKFILL OF ALL UTILITY TRENCHES WITHIN 875' WORK LIMITS. THIS INCLUDES TRENCHES DUG AND BACKFILLED BY LOCAL UTILITIES SUCH AS POWER, GAS, TELEPHONE, ETC. CONTRACTOR SHALL PROVIDE ADDITIONAL BACKFILL AND COMPACTION AS NECESSARY, IF SETTLEMENT OCCURS.



**811** Know what's below. Call before you dig. Dial 811. Or Call 800-282-7411

**Order Plans**

**BREEDLOVE LAND PLANNING**  
 Landscape Architects • Civil Engineers  
 www.landplanning.net  
 B.P. JOB 76404

**cunningham forehand matthews & moore**

cunningham, forehand, matthews & moore, architects, inc. - 2011 manchester street, n.e. - atlanta, georgia 30324 - phone (404) 873-2152

C3.3