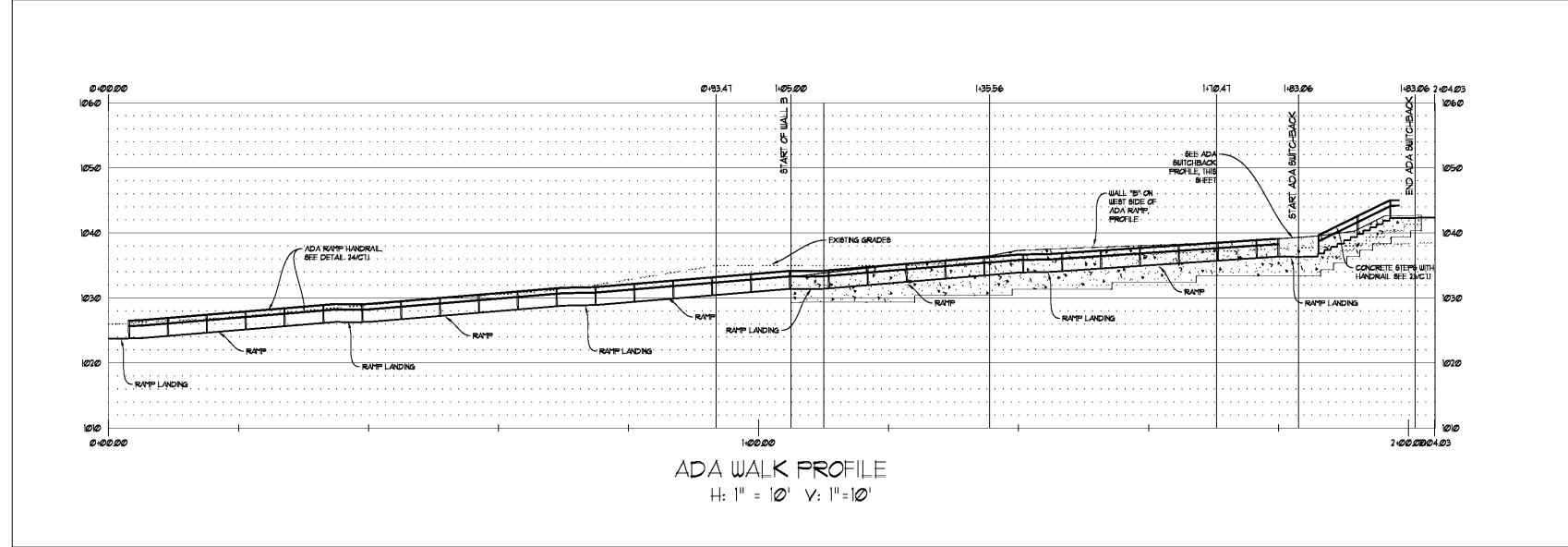
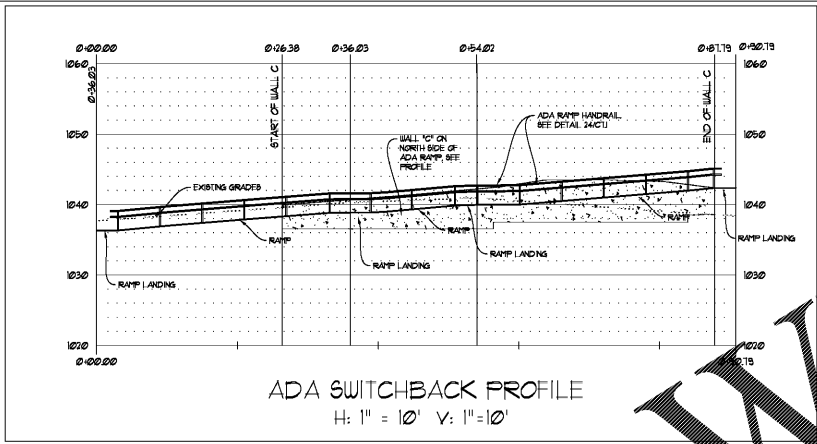


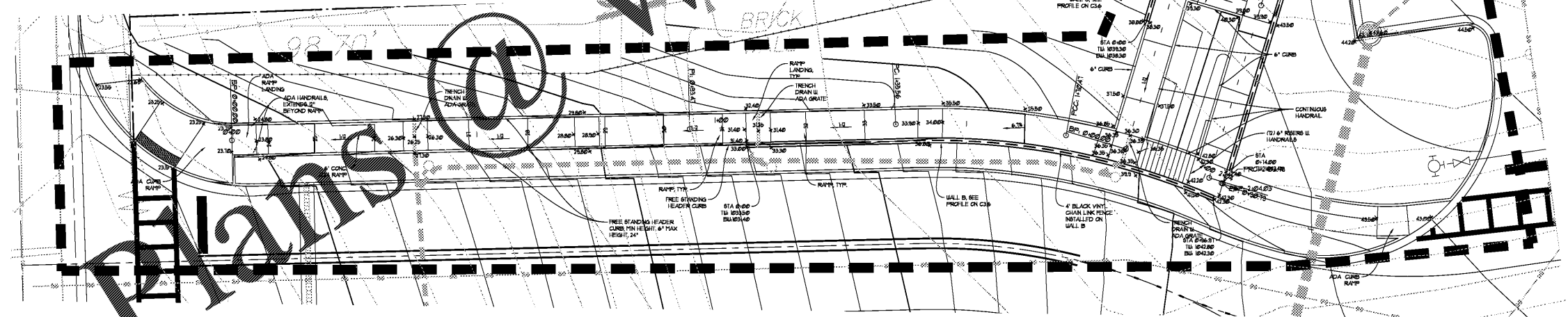
DRAWING ISSUE RECORD		
DATE	REVISIONS	NO.
11-1-18	ISSUE TO BID	



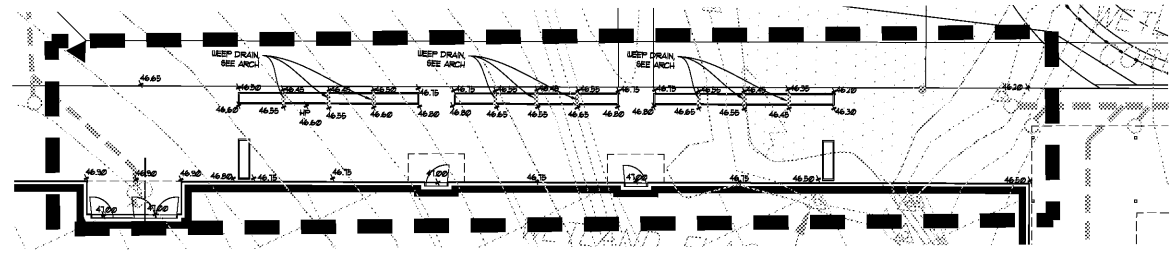
ADA WALK PROFILE
H: 1" = 10' V: 1" = 10'



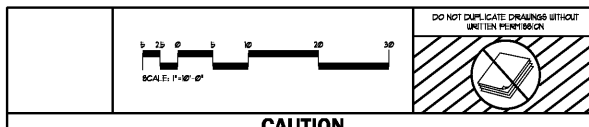
ADA SWITCHBACK PROFILE
H: 1" = 10' V: 1" = 10'



ADA RAMP GRADING ENLARGEMENT
1" = 10'



SEAT WALL GRADING ENLARGEMENT
1" = 10'



CAUTION
Know what's below. Call before you dig. Dial 811. Or Call 800-282-7411

THE UTILITIES SHOWN ARE SHOWN FOR THE CONTRACTOR'S CONVENIENCE ONLY. THERE MAY BE OTHER UTILITIES NOT SHOWN ON THESE PLANS. THE DESIGN PROFESSIONAL ASSUMES NO RESPONSIBILITY FOR THE LOCATIONS SHOWN AND IT SHALL BE THE CONTRACTOR'S RESPONSIBILITY TO VERIFY THE LOCATIONS OF UTILITIES WITHIN THE LIMITS OF THE WORK. DAMAGE TO EXISTING UTILITIES BY THE CONTRACTOR FROM HIS/HER OPERATIONS, SHALL BE THE SOLE RESPONSIBILITY OF THE CONTRACTOR.

CONTRACTOR SHALL BE RESPONSIBLE TO SECURE THE SERVICES OF A PRIVATE UTILITY LOCATOR FIRM DURING THE ENTIRE COURSE OF CONSTRUCTION. CONTRACTOR SHALL PAY FOR SAID SERVICES. TRENCHES DUG AND BACKFILLED BY LOCAL UTILITIES SUCH AS POWER, GAS, TELEPHONE, ETC. CONTRACTOR SHALL PROVIDE ADDITIONAL BACKFILL AND COMPACTION AS NECESSARY, IF SETTLEMENT OCCURS.



GRADING ENLARGEMENT

HARMONY LELAND-CRYSTAL
REPLACEMENT ELEMENTARY SCHOOL
6390 FACTORY BUNDS RD
HABLETON, GA 30126
FOR COBBS COUNTY SCHOOL DISTRICT
COBBS COUNTY, GA
C&S# PROJECT NO. 46884 / DOE FACILITY CODE

JOB NO. 511-007-18
DATE 2018-08-01
DWN. BY KD

cunningham, forehand, matthews & moore, architects, inc. - 2011 manchester street, n.e. - atlanta, georgia 30324 - phone (404) 873-2152

www.landinwells.com

C3.01

Order Plans
BREEDLOVE LAND PLANNING
Landscape Architects • Civil Engineers
www.landplanning.net
B.P. JOB 16414