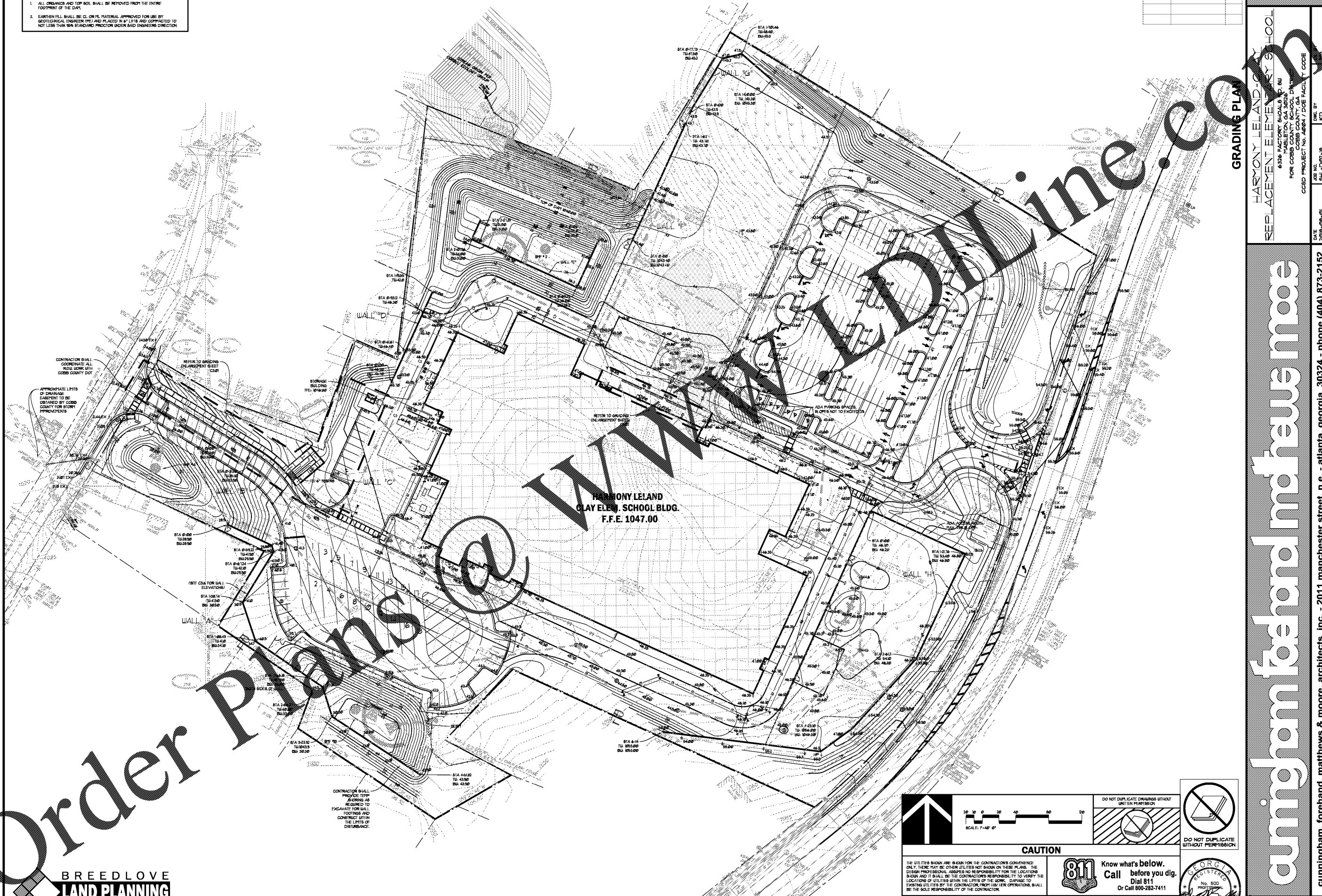


**COBB COUNTY GRADING NOTES**

1. ALL OBSTACLES AND TOP SOIL SHALL BE REMOVED FROM THE ENTIRE FOOTPRINT OF THE DIRT.
2. EARTHEN FILL SHALL BE CL OR M. MATERIAL APPROVED FOR USE BY GEOTECHNICAL ENGINEER (P) AND PLACED IN 18" LIFTS AND COMPACTED TO NOT LESS THAN 98% STANDARD PROCTOR UNDER SAID ENGINEER'S DIRECTION.

DRAWING ISSUE RECORD		
DATE	REVISIONS	NO.
11-1-18	ISSUE TO BID	



CONTRACTOR SHALL COORDINATE ALL ROAD WORK WITH COBB COUNTY DOT.

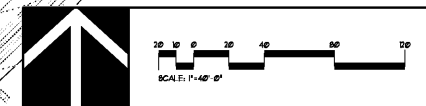
APPROXIMATE LISTS OF DRAINAGE ELEVATIONS TO BE OBTAINED BY COBB COUNTY FOR EROSION IMPROVEMENTS.

REFER TO GRADING ENLARGEMENT SHEET C-02P.

REFER TO GRADING ENLARGEMENT SHEET C-03P.

HARMONY LELAND CLAY ELEM. SCHOOL BLDG. F.F.E. 1047.00

CONTRACTOR SHALL PROVIDE 12" W/IRONS AS REQUIRED TO EXCAVATE FOR WALL FOOTINGS AND CONTRACTOR SHALL BE RESPONSIBLE FOR THE LIMITS OF DISTURBANCE.



DO NOT DUPLICATE DRAWINGS WITHOUT WRITTEN PERMISSION.



DO NOT DUPLICATE WITHOUT PERMISSION.

**CAUTION**

THE UTILITIES SHOWN ARE SHOWN FOR THE CONTRACTOR'S CONVENIENCE ONLY. THERE MAY BE OTHER UTILITIES NOT SHOWN ON THESE PLANS. THE DESIGN PROFESSIONAL ASSUMES NO RESPONSIBILITY FOR THE LOCATIONS SHOWN AND IT SHALL BE THE CONTRACTOR'S RESPONSIBILITY TO VERIFY THE LOCATIONS OF UTILITIES WITHIN THE LIMITS OF THE WORK. DAMAGE TO EXISTING UTILITIES BY THE CONTRACTOR FROM HIS/HER OPERATIONS, SHALL BE THE SOLE RESPONSIBILITY OF THE CONTRACTOR.

**811** Know what's below. Call before you dig. Dial 811. Or Call 800-282-7411

CONTRACTOR SHALL BE RESPONSIBLE TO SECURE THE SERVICES OF A PRIVATE UTILITY LOCATOR PRIOR TO THE START OF CONSTRUCTION. CONTRACTOR SHALL PAY FOR SAID SERVICES. CONTRACTOR SHALL IMMEDIATELY REPAIR ALL UTILITIES DAMAGED BY CONSTRUCTION ACTIVITIES, AT NO ADDITIONAL COST TO THE OWNER.

CONTRACTOR SHALL BE RESPONSIBLE FOR PROTECTION OF BACKFILL OF ALL UTILITY TRENCHES WITHIN SITE WORK LIMITS. THIS INCLUDES TRENCHES DUG AND BACKFILLED BY LOCAL UTILITIES SUCH AS POWER, GAS, TELEPHONE, ETC. CONTRACTOR SHALL PROVIDE ADDITIONAL BACKFILL AND PROTECTION AS NECESSARY, IF SETTLEMENT OCCURS.



**Order Plans @**

**BREEDLOVE LAND PLANNING**  
 Landscape Architects • Civil Engineers  
 www.landplanning.net  
 B.P. JOB 16404

GRADING PLAN

HARMONY LELAND CLAY ELEMENTARY SCHOOL REPLACEMENT ELEMENTARY SCHOOL  
 6394 FACTORY SHOALS RD. SU. 800  
 HABLETON, GA 30126  
 FOR COBB COUNTY SCHOOL DISTRICT  
 COBB COUNTY, GA  
 COBB PROJECT NO. A65871 DOE FACILITY CODE

DATE: 2018-08-01

JOB NO. 1811-007-18

DWG. BY: KC

DATE: 2018-08-01

PHONE: (404) 873-2152

ADDRESS: atlanta, georgia

30324

street, n.e.

- 2011 manchester

forehand, matthews & moore, architects, inc.

atlanta, georgia

30324

phone

(404) 873-2152

**cunningham forehand matthews moore**

**C3.0**