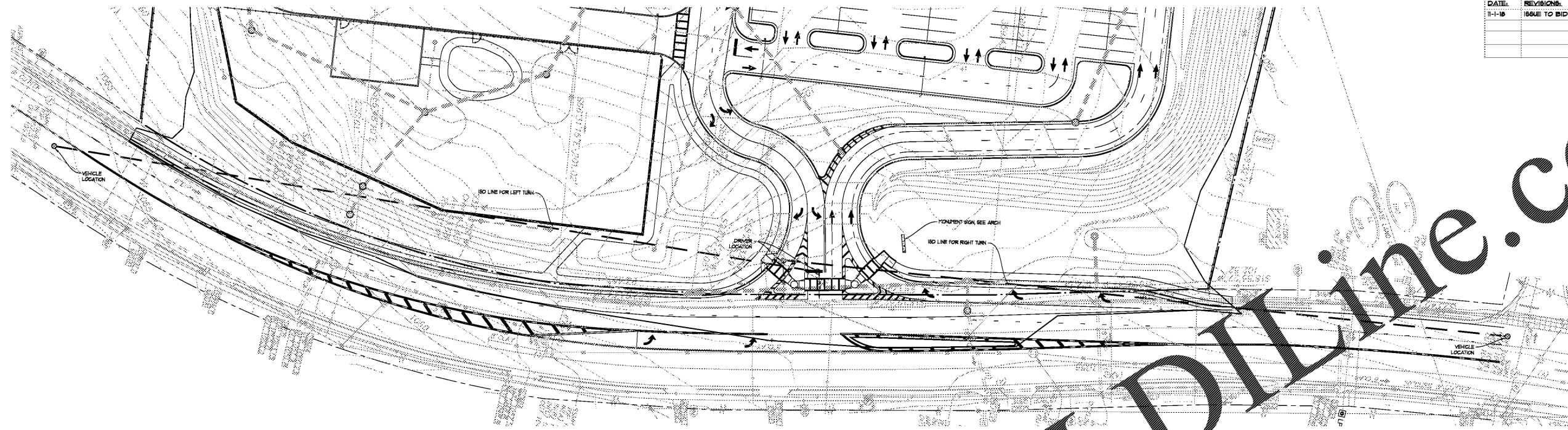


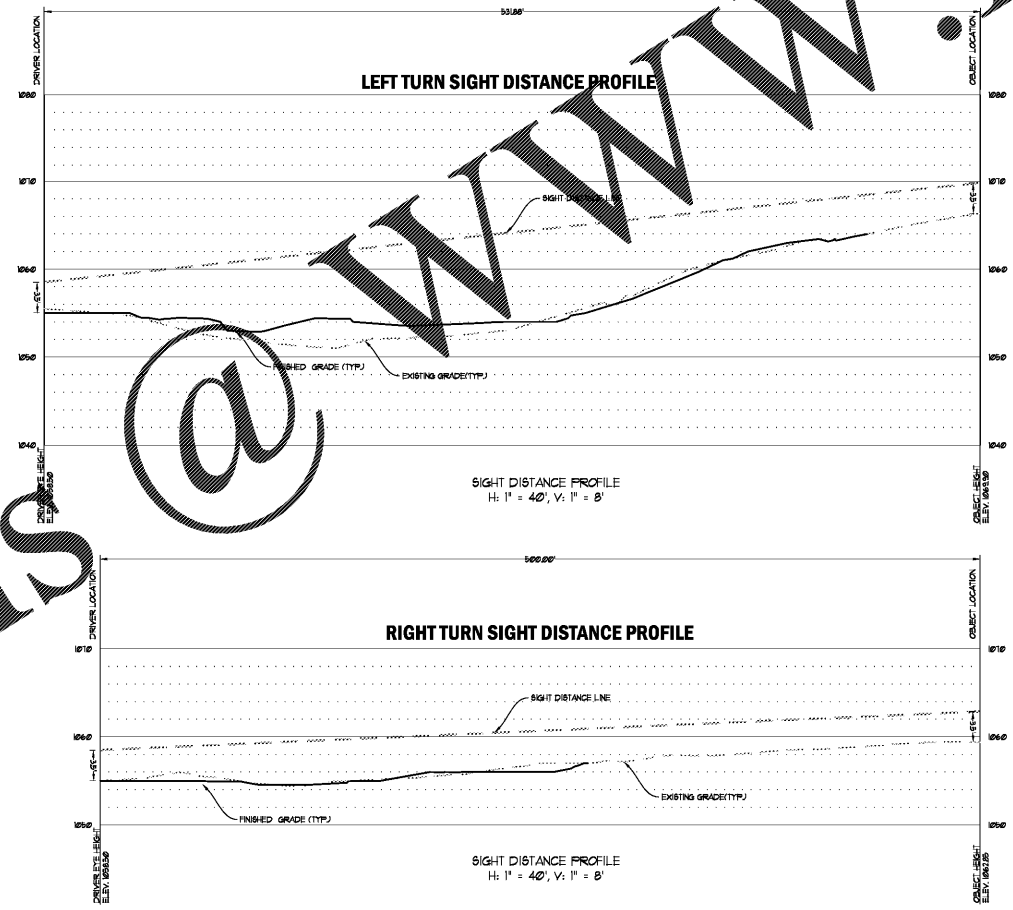
DRAWING ISSUE RECORD		
DATE	REVISIONS	NO.
11-1-18	ISSUE TO BID	



SIGHT DISTANCE PLAN

HARMONY LELAND-CRYSTAL
 REPLACEMENT ELEMENTARY SCHOOL
 6396 FACTORY SHOALS DR. SW
 HABLETON, GA 30126
 FOR COBB COUNTY SCHOOL DISTRICT
 COBB COUNTY, GA
 CCSD PROJECT NO. A6584 / DOE FACILITY CODE

DATE: 2018-08-01
 JOB NO.: SHL-007-18
 DWN. BY: KD



SIGHT DISTANCE NOTE

NO LANDSCAPING, FENCES, WALLS, SCHOOL WALKWAYS OR ANY OTHER ITEMS RESTRICTING REQUIRED SIGHT DISTANCE ARE TO BE PLACED WITHIN LINES OF SIGHT.

CAUTION

THE UTILITIES SHOWN ARE SHOWN FOR THE CONTRACTOR'S CONVENIENCE ONLY. THERE MAY BE OTHER UTILITIES NOT SHOWN ON THESE PLANS. THE DESIGN PROFESSIONAL ASSUMES NO RESPONSIBILITY FOR THE LOCATIONS SHOWN AND IT SHALL BE THE CONTRACTOR'S RESPONSIBILITY TO VERIFY THE LOCATIONS OF UTILITIES WITHIN THE LIMITS OF THE WORK. DAMAGE TO EXISTING UTILITIES BY THE CONTRACTOR FROM HIS/HER OPERATIONS, SHALL BE THE SOLE RESPONSIBILITY OF THE CONTRACTOR.

CONTRACTOR SHALL BE RESPONSIBLE TO SECURE THE SERVICES OF A PRIVATE UTILITY LOCATOR FIRM DURING THE ENTIRE COURSE OF CONSTRUCTION. CONTRACTOR SHALL PAY FOR SAID SERVICES. CONTRACTOR SHALL IMMEDIATELY REPAIR ALL UTILITIES DAMAGED BY CONSTRUCTION ACTIVITIES, AT NO ADDITIONAL COST TO THE OWNER.

CONTRACTOR SHALL BE RESPONSIBLE FOR CORROSION OF BACKFILL OF ALL UTILITY TRENCHES WITHIN 8 FEET WORK LIMITS. THIS INCLUDES TRENCHES DUG AND BACKFILLED BY LOCAL UTILITIES, SUCH AS POWER, GAS, TELEPHONE, ETC. CONTRACTOR SHALL PROVIDE ADDITIONAL BACKFILL AND CORROSION AS NECESSARY, IF SETTLEMENT OCCURS.

DO NOT DUPLICATE DRAWINGS WITHOUT WRITTEN PERMISSION

DO NOT DUPLICATE WITHOUT PERMISSION

811 Know what's below. Call before you dig. Dial 811 Or Call 800-282-7411

NO. 630 PROFESSIONAL SEAL W. BREEDLOVE

Order Plans @

BREEDLOVE LAND PLANNING
 Landscape Architects • Civil Engineers
 www.landplanning.net
 B.P. JOB 16404

cunningham, forehand, matthews & moore, architects, inc. - 2011 manchester street, n.e. - atlanta, georgia 30324 - phone (404) 873-2152

C2.1