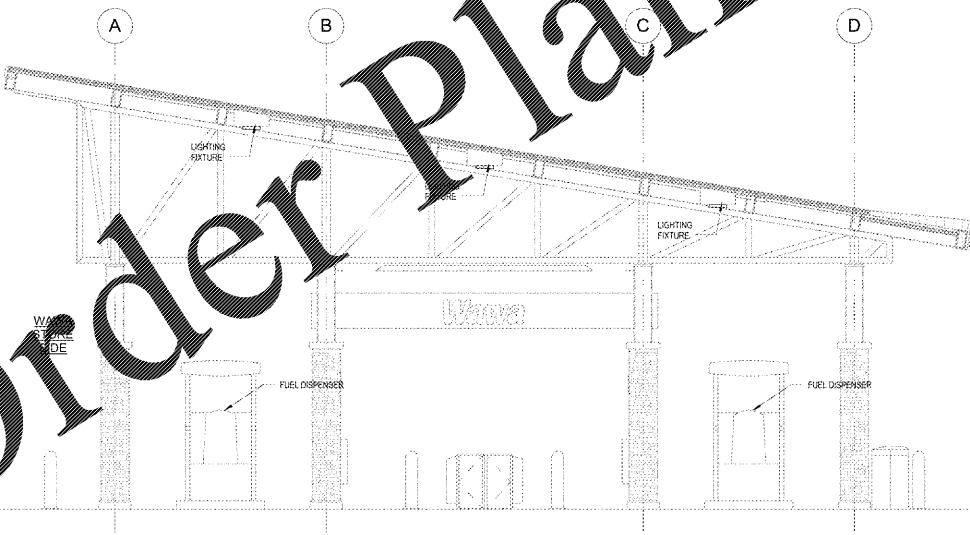


1 CANOPY ELECTRICAL REFLECTED CEILING PLAN
CE1
1/4" = 1'-0"

TYPE	MANUF.	CATALOG NO.	CONDUIT	WIRE	AMPS / FIXTURE	MGT.
FD		LED - DECK MOUNT - SLOPED ADAPTER		14 AWG		SURFACE

ALL LIGHT FIXTURES AND LAMPS SUPPLIED BY WAWA, G.C. TO COORDINATE INSTALLATION WITH E.C. AND CANOPY VENDOR. COORDINATE FIXTURE COUNT, LOCATIONS AND LAMP OUTPUT WITH SITE LIGHTING ENGINEER'S DRAWINGS.

2 CANOPY SIDE ELEVATION
CE1
1/4" = 1'-0"



WAWA STORE SIDE

ELECTRICAL NOTES

- ALL FIXTURES AND COMPONENTS SHALL BE GROUND BY A SEPARATE #10 GROUND WIRE.
- PETROLEUM CONTRACTOR TO PULL WIRING FOR INTERCOM AT CANOPY (SUPPLIED BY OTHERS).
- THE CONDUIT FOR THE "TYP" FIXTURES TO RUN ALONG THE GUTTER PAN AND RUN TO THE FIXTURES IN THE FLUTES OF THE DECKING. NO CONDUIT SHOULD BE VISIBLE FROM BELOW THE CANOPY.
- FOR DISPENSER DATA, VEEDER-ROOT SENSOR, AND INTERCOMMUNICATOR PROVIDE CONDUIT AND CONNECTIONS AS REQUIRED. COORDINATE WITH WAWA CONSTRUCTION MANAGER.
- USE THIS CIRCUIT TO PROVIDE POWER TO 208 VOLT ILLUMINATED SIGN AT THIS LOCATION BETWEEN CANOPY COLUMNS AT APPROXIMATELY 12' AFG.
- ELECTRICAL CONTRACTOR TO COORDINATE WITH PETROLEUM CONTRACTOR AND GENERAL CONTRACTOR TO MAKE SURE THAT SEAL OFF FITTINGS AS REQUIRED ARE PROVIDED FOR CONDUITS ENTERING THE FUEL DISPENSERS AND THAT THE ELECTRICAL INSTALLATION AT THE GAS CANOPY AND FUEL TANKS IS IN ACCORDANCE WITH NEC ARTICLE 514 FOR BRANCH CIRCUITS OUT TO CANOPY. SEAL IF CIRCUIT LENGTH EXCEEDS 100 FEET WIRE/CONDUIT MUST BE SIZED PER NEC 15-410.1 (ARC FLASH PROTECTION).
- LIGHT FIXTURES PROVIDED BY WAWA, G.C. TO COORDINATE INSTALLATION OF CONDUIT, WIRING AND FINAL CONNECTION WITH E.C. AND CANOPY VENDOR.
- WAWA GOOSE SIGN, E.C. TO VERIFY EXACT LOCATION WITH G.C. AND ARCHITECTURAL DRAWINGS & C TO RUN WIRING, CONDUIT AND CONNECT TO LOCAL CIRCUITRY.

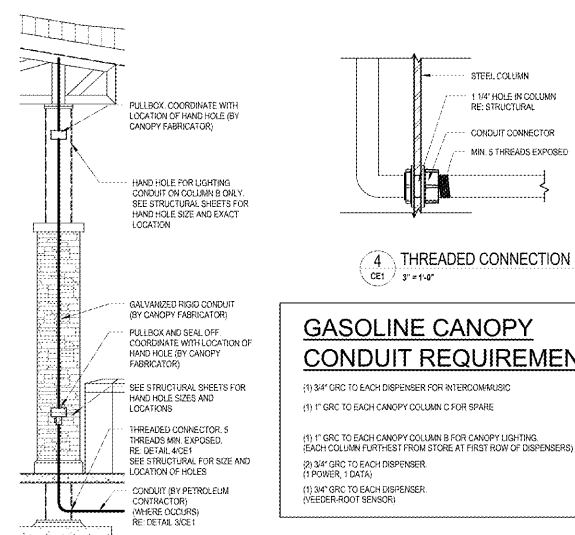
GASOLINE CONDUIT REQUIREMENTS:

- 1" GRC SPARE TO COLUMN A OR C AS INDICATED BY FUEL COUNT LAYOUT. (SEE SHEET CE1)
- 1" GRC TO CANOPY COLUMN FOR LIGHTING (COLUMN FURTHEST FROM STORE) - COLUMN B. (SEE SHEET CE2 FOR COLUMN)
- 3/4" GRC TO EACH DISPENSER: (1) POWER, 1 DATA, 1 MUSIC/INTERCOM, 1 FUEL-TANK MONITOR SENSOR)
- 1" GRC TO EACH TANK STP COMPARTMENT SUMP (F.E. PETRO POWER (1 POWER, 1 SPARE)
- 3/4" GRC TO EACH TANK STP COMPARTMENT SUMP (FUEL-TANK MONITOR MAGNETOSTRICTIVE PRIDE AND FUEL-TANK MONITOR SENSOR)
- 3/4" GRC TO EACH TANK MULTIPORT CONTAINMENT SUMP (FUEL-TANK MONITOR MULTI-PORT FILL SLAB)
- 1" GRC TO EACH TANK (FUEL-TANK MONITOR BRINE INTERSTITIAL RESERVOIR)
- 1" GRC TO OVERFILL ALARM (ON VENT STACK)
- 1" GRC TO VENT STACK (SPARE)
- 1" GRC TO E-STOP AT STREET SIDE OF GAS CANOPY (SEE NOTE 15 ON SHEET E4)

6 Gas Canopy Conduits Notes
CE1
1/4" = 1'-0"

TANKS AND CANOPY CONDUITS AND CONDUCTORS NOTE.

- THE GENERAL CONTRACTOR SHALL FURNISH AND INSTALL ALL GRC CONDUIT, ASSOCIATED FITTINGS AND WIRE NECESSARY TO PROVIDE A COMPLETE ELECTRICAL SYSTEM FOR THE GAS CANOPY, FUEL TANKS, MUSIC AND INTERCOM SYSTEM. HOWEVER, THE FOLLOWING CONDUIT SHALL BE PROVIDED AND INSTALLED BY THE CONTRACTOR NOTED BELOW.
- FUEL TANKS**
PETROLEUM CONTRACTOR SHALL FURNISH AND INSTALL THE CONDUIT FROM THE EDGE OF THE FUEL TANK CONCRETE PAD AND TERMINATE AT THE TANK EQUIPMENT.
- GAS CANOPY**
PETROLEUM CONTRACTOR SHALL FURNISH AND INSTALL THE CONDUIT FROM THE EDGE OF THE CONCRETE CANOPY PAD TO THE BASE OF THE CANOPY COLUMNS WHERE THEY WILL MAKE A THREADED CONNECTION. (REFER TO DETAIL A/C/E1 CANOPY FABRICATOR SHALL FURNISH AND INSTALL THE THREADED CONNECTOR (MIN 5 EXPOSED THREADS) AT THE BASE OF THE CANOPY COLUMN AND CONTINUE UP THROUGH THE COLUMN TO A SEAL OFF AND LOCK BY AT 2" THEN CONTINUE WITH RIGID CONDUIT TO THE BOTTOM OF THE CANOPY WHERE IT WILL TRANSITION INTO SEAL TIGHT CONDUIT AND TERMINATE AT THE FIRST ROW OF LIGHTS. G.C. SHALL CONNECT INTO THE FIRST ROW OF LIGHTS AND COMPLETE THE ELECTRICAL CANOPY LIGHTING.
- PETROLEUM CONTRACTOR SHALL ALSO INSTALL THE CONDUIT FROM THE EDGE OF THE CONCRETE CANOPY PAD TO THE TERMINATION POINT FOR THE MUSIC AND INTERCOM SYSTEMS.

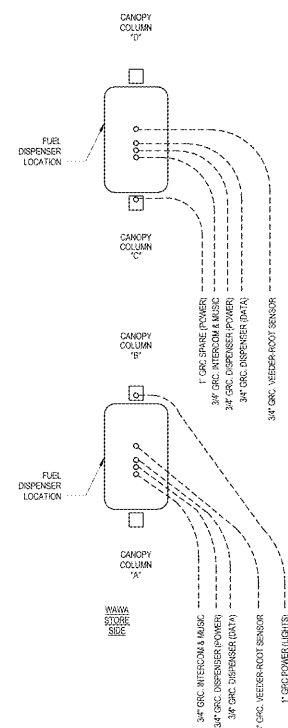


5 COLUMN SECTION
CE1
3/8" = 1'-0"

GASOLINE CANOPY CONDUIT REQUIREMENTS:

- 3/4" GRC TO EACH DISPENSER FOR INTERCOM/MUSIC
- 1" GRC TO EACH CANOPY COLUMN C FOR SPARE
- 1" GRC TO EACH CANOPY COLUMN B FOR CANOPY LIGHTING (EACH COLUMN FURTHEST FROM STORE AT FIRST ROW OF DISPENSERS)
- 3/4" GRC TO EACH DISPENSER (1 POWER, 1 DATA)
- 3/4" GRC TO EACH DISPENSER (VEEDER-ROOT SENSOR)

3 CANOPY CONDUIT LOCATIONS
CE1
1/2" = 1'-0"



WAWA
280 WEST BALTIMORE PIKE
HUDSON, FL 34689

CLIENT NAME
WAWA
280 WEST BALTIMORE PIKE
HUDSON, PENNSYLVANIA 19053

PROJECT NAME	DATE	BY	CHECKED
WAWA STACKED 8 GAS CANOPY 2018.01 STORE #5275-LIT	03-21-2017	WAWA	JPM

CE1

Order Plans @

WWW.LDOnline.com

PROJECT NO. 210102
DATE 03-21-2017
BY WAWA
CHECKED JPM

PROJECT NO. 210102
DATE 03-21-2017
BY WAWA
CHECKED JPM