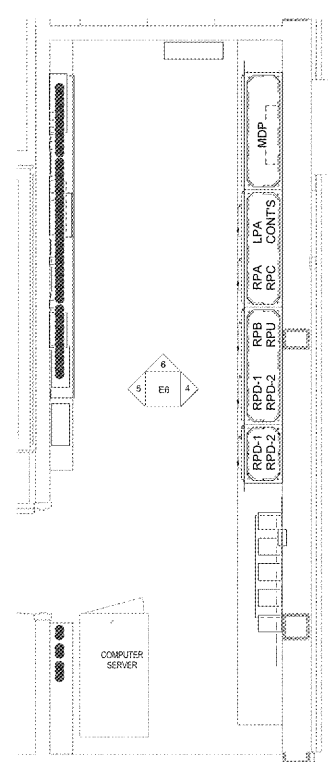
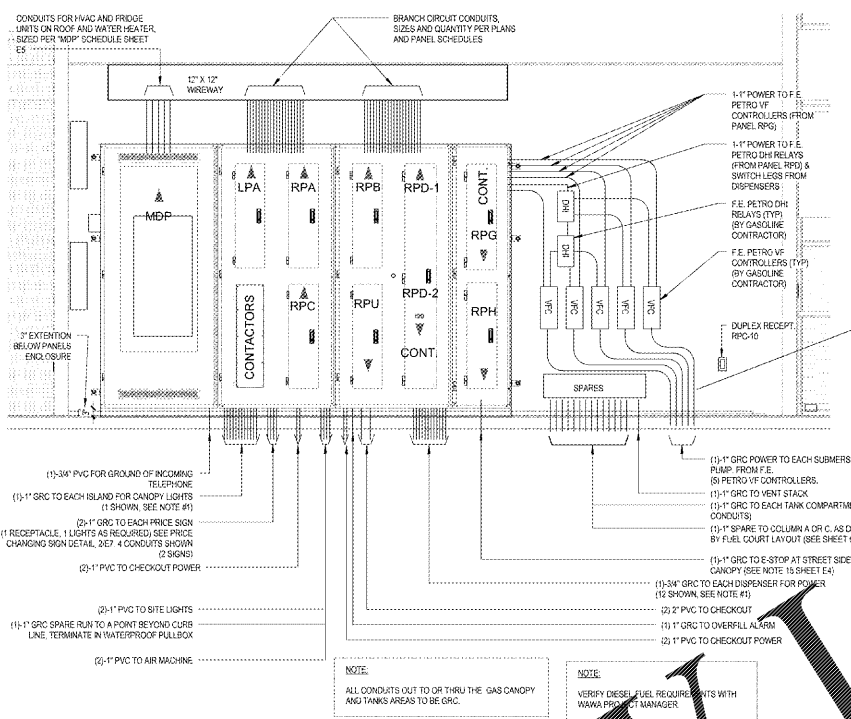


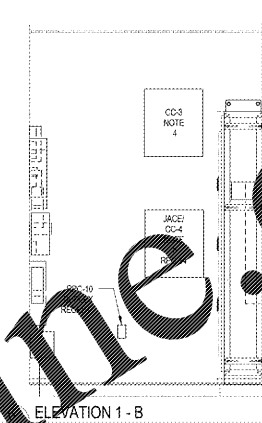
Order Plans



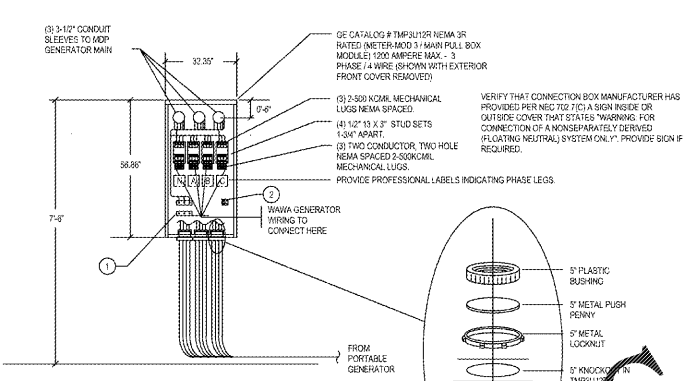
1 ELECTRICAL ROOM - PLAN
12' x 14'



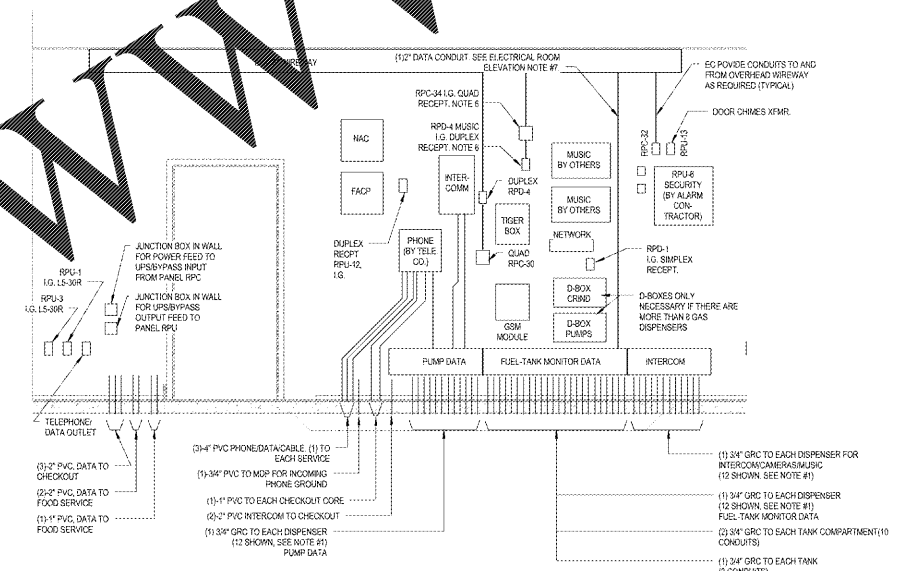
4 ELEVATION 1 - C
12' x 14'



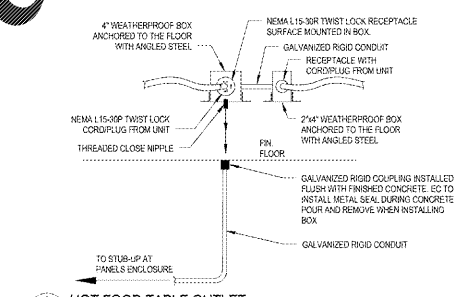
5 ELEVATION 1 - A
12' x 14'



2 300KW CONNECTION BOX DETAIL
11 1/2' x 6 1/2'



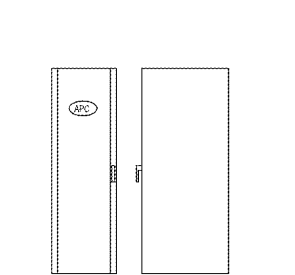
5 ELEVATION 1 - A
12' x 14'



3 HOT FOOD TABLE OUTLET
NOT TO SCALE

- ELECTRICAL ROOM ELEVATION NOTES:**
- CONDUIT LAYOUT PLAN SHOWN ON PLAN HAS PROVISIONS FOR 12 DISPENSERS. THE ACTUAL NUMBER OF CONDUITS REQUIRED WILL BE DEPENDENT ON THE CANOPY CONFIGURATION AND ACTUAL NUMBER OF DISPENSERS INSTALLED. IF FEWER DISPENSERS ARE INSTALLED, AND THEREFORE SURVEYOR SPACES EXIST, THE CONDUITS ARE TO BE INSTALLED IN A SINGLE ROW.
 - PROVIDE 2" UNDERGROUND CONDUIT FROM SPARES WIREWAY TO INTERCOM WIREWAY FOR COMMAND AND DATA WIRING. (SEE SHEET E4)
 - ALL SPARE CONDUITS WHICH TRAVERSE THE HAZARDOUS AREA SHOULD BE PACKED WITH MINERAL FIBER FOLDED WITH DUCT SEAL, AND THEN SEALED WITH A THREADED PLUG OR CAP AS APPROPRIATE FOR THE SPECIFIC CONDUIT RUN AT EACH END OF THE CONDUIT.
 - PANEL CC-3 AND REQUIRED CONDUIT SHALL BE PROVIDED BY BAS CONTRACTOR CONNECTED TO PANEL FACE CC-4 AND REQUIRED CONDUIT SHALL BE PROVIDED BY BAS CONTRACTOR.
 - PANEL FACE CC-4 AND REQUIRED CONDUIT SHALL BE PROVIDED BY BAS CONTRACTOR.
 - JUNCTION BOX, RECEPTABLES, AND ASSOCIATED CONDUIT TO MAIN DISTRIBUTION PANEL SHALL BE PROVIDED BY ELECTRICAL CONTRACTOR. JUNCTION BOX SHALL BE SURFACE MOUNTED.
 - RUN 1/2" CONDUIT TO MANAGER'S OFFICE. RUN CONDUIT DOWN INSIDE MANAGER'S OFFICE WALL AND STUB-OUT AT FUEL-TANK MONITOR EQUIPMENT LOCATION. ALSO, RUN 1" CONDUIT FROM MANAGER'S OFFICE FUEL-TANK MONITOR ABOVE CEILING TO PANEL, RPV IN ELECTRICAL ROOM.
 - ALL CONDUITS RUNNING OUT TO CLASSIFIED AREAS SUCH AS THE GAS CANOPY AND TANKS AREA SHALL BE GRC TYPE CONDUIT FOR ENTIRE RUN OF CONDUIT. CONDUITS TO OTHER AREAS SUCH AS MONUMENT SIGNS, AIR PUMP, SITE LIGHTING, ETC. MAY BE PVC.

- GASOLINE CONDUIT REQUIREMENTS:**
- 1" GRC SPARE TO COLUMN A OR C AS DICTATED BY FUEL COURT LAYOUT. (SEE SHEET C-1)
 - 1" GRC TO CANOPY COLUMN FOR LIGHTING (COLUMN FURTHEST FROM STORE) - COLUMN B. (SEE SHEET C-1 FOR COUNT)
 - 3/4" GRC TO EACH DISPENSER (1 POWER, 1 DATA, 1 MUSIC/INTERCOM, 1 FUEL-TANK MONITOR SENSOR)
 - 1" GRC TO EACH TANK STP CONTAINMENT SUMP. F.E. PETRO POWER (1 POWER, 1 SPARE)
 - 1/2" GRC TO EACH TANK STP COMPARTMENT SUMP. (FUEL-TANK MONITOR WASH/DISTRIBUTE, PROBE, AND FUEL-TANK MONITOR SENSOR)
 - 3/4" GRC TO EACH TANK MULTIPORT CONTAINMENT SUMP. (FUEL-TANK MONITOR MULTIPORT FULL SUMP)
 - 3/4" GRC TO EACH TANK (FUEL-TANK MONITOR BRINE INTERSTITIAL RESERVOIR)
 - 1" GRC TO OVERFILL ALARM (ON VENT STACK)
 - 1" GRC TO VENT STACK (SPARE)
 - 1" GRC TO STOP AT STREET SIDE OF GAS CANOPY (SEE NOTE 15 ON SHEET E-4)



7 DATA CABINET DETAIL
12' x 14'

WAWA
260 WEST BALTIMORE PIKE
WAWA, PENNSYLVANIA 19053

PROJECT NAME:
WAWA F85FB 2018.01 STORE #5275-LIT
9021 STATE ROAD 52
HUDSON, FL 34689

SHEET TITLE:
ELECTRICAL ROOM PLAN AND ELEVATIONS

NO.	REVISION	DATE
1	ISSUED FOR PERMIT	03/27/2018
2	PRELIMINARY REVIEW SET	06/20/2018
3	REVISED FOR PERMIT	08/16/2018
4	REVISED FOR PERMIT	08/16/2018
5	REVISED FOR PERMIT	08/16/2018

APPROXIMATE DIMENSIONS: 22'W X 28' D X 7' H

210 (REV)
DATE: 03-27-2017
PROJECT: WAWA F85FB 2018.01 STORE #5275-LIT
DRAWN BY: JPM
CHECKED BY: JPM

E6

WAWA & Peterson
Engineers
Architects
Interior Designers
Professional Engineers License No. 13062
Professional Architects License No. 13062
Professional Interior Designers License No. 13062

1500 West 10th Street
Tampa, FL 33606
Tel: 813.281.4444
Fax: 813.281.4444