

PANELBOARD: MDP
BUS AMPS: 225A
AIC RATING: 42000 FULLY RATED
EQUIPMENT GROUND BUS: 250K CIRCULAR STEEL

PANELBOARD: RPC
BUS AMPS: 225A
AIC RATING: 22000 FULLY RATED
EQUIPMENT GROUND BUS: 250K CIRCULAR STEEL

PANELBOARD: RPH
BUS AMPS: 100A
AIC RATING: 22000 FULLY RATED
EQUIPMENT GROUND BUS: 250K CIRCULAR STEEL

PANELBOARD: RPA
BUS AMPS: 225A
AIC RATING: 22000 FULLY RATED
EQUIPMENT GROUND BUS: 250K CIRCULAR STEEL

PANELBOARD: RPD
BUS AMPS: 225A
AIC RATING: 22000 FULLY RATED
EQUIPMENT GROUND BUS: 250K CIRCULAR STEEL

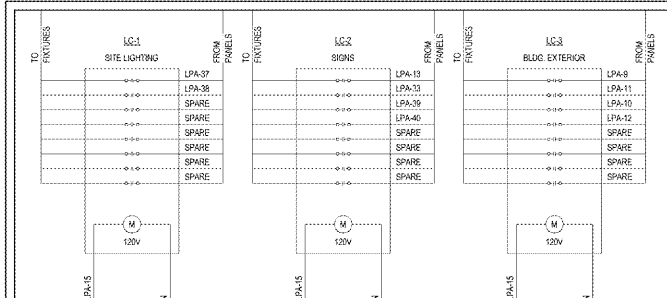
PANELBOARD: RPI
BUS AMPS: 100A
AIC RATING: 22000 FULLY RATED
EQUIPMENT GROUND BUS: 250K CIRCULAR STEEL

PANELBOARD: RPB
BUS AMPS: 225A
AIC RATING: 22000 FULLY RATED
EQUIPMENT GROUND BUS: 250K CIRCULAR STEEL

PANELBOARD: RPL
BUS AMPS: 225A
AIC RATING: 22000 FULLY RATED
EQUIPMENT GROUND BUS: 250K CIRCULAR STEEL

PANELBOARD: RPS
BUS AMPS: 100A
AIC RATING: 22000 FULLY RATED
EQUIPMENT GROUND BUS: 250K CIRCULAR STEEL

BUILDING ELECTRICAL SERVICE LOAD SUMMARY
BUILDING OCCUPANCY TYPE: M
LOAD DESCRIPTION: HVAC - WINTER, RECEPTACLES, MOTOR LOADS, etc.



LIGHTING CONTACTOR NOTES
LIGHTING CONTACTORS SHALL BE SQUARE D CATALOG NUMBER S8640L000Z. (800V) DRIVEN FOR LC-4. PROVIDED AS PART OF THE HILL PHOENIX ELECTRICAL PACKAGE.

Order Plans
WAWA F85FB 2018.01 STORE #5275-LIT

Project information form including Project Name, Location, Date, and other details.