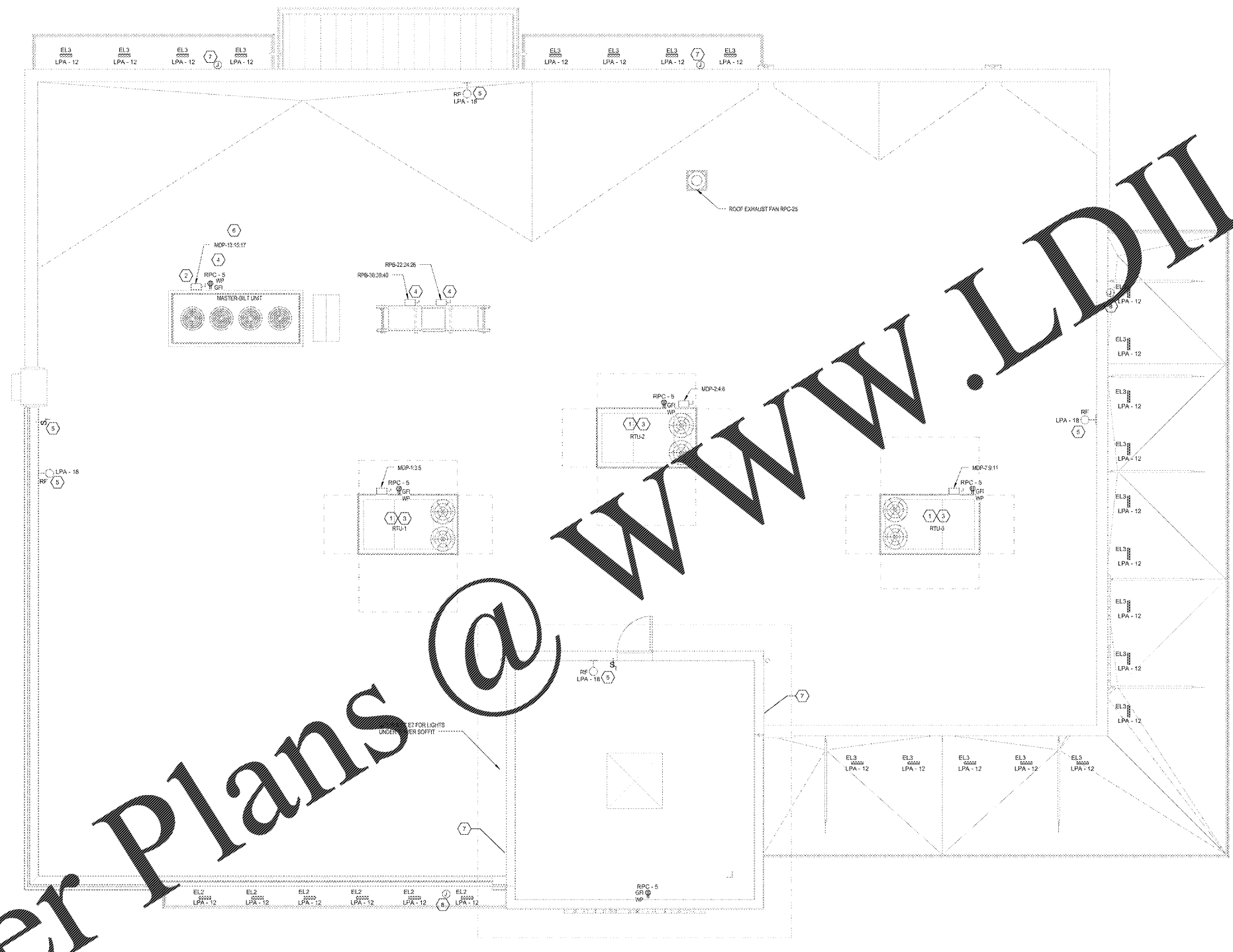
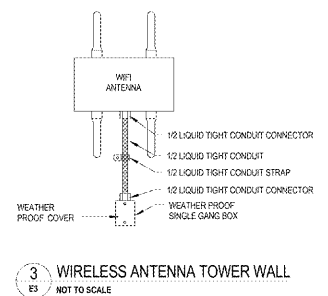


Order Plans @

WWW.LDILine.com



ELECTRICAL ROOF PLAN
1" = 1'-0"



GENERAL NOTES:

- E.C. TO LABEL EACH RECEPTACLE AND EXHAUST FAN SWITCH WITH CIRCUIT NUMBER AND INTENDED USE.
- ALL OR RECEPTACLES SHALL BE DUPLEX RECEPTACLES UNLESS OTHERWISE NOTED. SEE DETAIL 2E1.
- WHERE WEATHERPROOF COVERS ARE DETICATED, PROVIDE WEATHERPROOF COVERS.
- ALL RECEPTACLES SHALL BE MOUNTED AT 18" AFF UNLESS OTHERWISE NOTED.
- E.C. TO COORDINATE INSTALLATION OF ALL ROOF LIGHTING FIXTURES WITH ROOFING CONTRACTOR TO PROVIDE A STRUCTURALLY SOUND AND WEATHERPROOF "LEAK FREE" INSTALLATION. RUN CONDUITS IN PARAPET WALL, NO EXPOSED CONDUITS OR EXTRA ROOF PENETRATIONS.

KEYNOTES:

- MAIN DISCONNECT PROVIDED WITH UNIT. POWERED CONVENIENCE OUTLET PROVIDED WITH UNIT.
- E.C. SHALL PROVIDE COMPLETE CONDUIT/CONDUCTOR SYSTEM FROM MDP TO UNIT VIA DISCONNECT.
- E.C. SHALL PROVIDE COMPLETE CONDUIT/CONDUCTOR SYSTEM FROM MDP TO SINGLE POINT CONNECTION AT UNIT.
- PROVIDE SUPPORT RACK ATTACHED TO UNIT AS REQUIRED TO MOUNT ELECTRICAL EQUIPMENT.
- E.C. SHALL PROVIDE ALL LIGHTING FIXTURES (BASIS OF DESIGN - VARIETY) (MOUNTING) (FLOOR) PROVIDE WEATHERPROOF SWITCH WITH TAMER NEAR ACCESS LADDER AND DOOR. FIXTURES AND SWITCHES TO BE SURFACE MOUNTED IF BELOW TOP OF WALL OR 48" ABOVE FLOOR IN TOWER. PROVIDE COMPLETE CONDUIT/CONDUCTOR SYSTEM FOR FIXTURES AND SWITCHES BACK TO POWER PANEL IN ELECTRICAL ROOM.
- WALL MOUNTED WEATHERPROOF J-BOX TO SERVE "EL2" AND "EL3" LIGHTS ON TOP OF CANOPY. ELECTRICAL POWER TO MASTERS-BILT UNIT TO RUN THROUGH PROVIDED GOOSENECK NEXT TO UNIT. DO NOT CREATE SEPARATE ROOF PENETRATION.
- ELECTRICAL CONTRACTOR SHALL REFER TO DETAIL 2E13 FOR INSTALLATION OF ANTENNAS ON TOWER WALL. WALL MOUNTED WEATHERPROOF JUNCTION BOX TO SERVE "EL2" LIGHTS ON TOP OF CANOPY. MOUNT BOTTOM OF J-BOX AT 2" ABOVE TOP OF CANOPY.

Cravens & Peterson
Engineers Planners
Architects
Interior Designers
1500 West 10th Street
Tulsa, Oklahoma 74103
Tel: 918.438.1414
Fax: 918.438.1415
www.crapet.com

CLIENT NAME
WAWA
280 WEST BALTIMORE PIKE
WAWA, PENNSYLVANIA 19053

PROJECT NAME
WAWA F85FB 2018.01 STORE #5275-LIT
9021 STATE ROAD 52
HUDSON, FL 34689

SHEET TITLE
ROOF LIGHTING AND POWER PLAN

Revision	Number	Date	By	Check
1	PRELIMINARY	01/27/2017		
2	PRELIMINARY	02/02/2017		
3	REVISED	02/02/2017		
4	REVISED	02/02/2017		
5	REVISED	02/02/2017		

PRODUCT NO.
2101802
DATE
03-21-2017
DRAWN
JPM
CHECKED
JPM

E3