

**LEGEND**

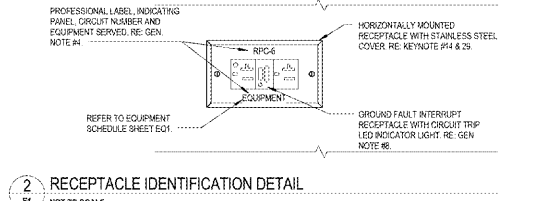
- 1 GASOLINE EMERGENCY SHUT-OFF PUSH BUTTON PROVIDED BY ELECTRICAL CONTRACTOR
- 2 GASOLINE EMERGENCY SHUT-OFF RESET PUSH BUTTON INSTALLED IN MANAGERS OFFICE BELOW FUEL TANK, MONITOR AND ON CONTRACTOR PANEL FOR RPB
- 3 SINGLE RECEPTACLE
- 4 SELF-TEST/RESET BLANK FACE GFI OUTLET
- 5 DUPLEX RECEPTACLE
- 6 USB RECEPTACLE
- 7 QUADRUPEX RECEPTACLE ON DEDICATED CIRCUIT
- 8 DUPLEX RECEPTACLE CONDENSATION PUMP VERIFY LOCATION IF REQUIRED WITH HVAC CONTRACTOR
- 9 DUPLEX RECEPT. (FLOOR MOUNTED)
- 10 DUPLEX RECEPT. (CEILING MOUNTED)
- 11 TWIST LOCK STRAIGHT BLADE DEDICATED RECEPTACLE
- 12 SPECIAL PURPOSE RECEPTACLE, SEE PLAN FOR NEW CONSTRUCTION TWIST LOCK
- 13 TRANSFORMER RELBUZZER (RE: GEN. NOTE 5)
- 14 TRANSFORMER - FLUSH VALVES (RE: KEYNOTE 13)
- 15 CONNECTION POINT ELECTRICAL CONNECTIONS TO BE EQUIPPED AS REQUIRED
- 16 JUNCTION BOX
- 17 GROUND FAULT INTERRUPT (GFI, NOTE 8)
- 18 ISOLATED GROUND
- 19 DOOR DOOR
- 20 JUNCTION BOX
- 21 TELEPHONE OUTLET (NOTE #10)
- 22 40 WATT TELEPHONE OUTLET (SFP#F)
- 23 20 WATT TELEPHONE JACK (SFP#F)
- 24 TELEPHONE JACK (SFP#F)
- 25 TELEPHONE JACK (SFP#F)
- 26 TELEPHONE JACK (SFP#F)
- 27 TELEPHONE JACK (SFP#F)
- 28 TELEPHONE JACK (SFP#F)
- 29 TELEPHONE JACK (SFP#F)
- 30 TELEPHONE JACK (SFP#F)
- 31 TELEPHONE JACK (SFP#F)
- 32 TELEPHONE JACK (SFP#F)
- 33 TELEPHONE JACK (SFP#F)
- 34 TELEPHONE JACK (SFP#F)
- 35 TELEPHONE JACK (SFP#F)
- 36 TELEPHONE JACK (SFP#F)
- 37 TELEPHONE JACK (SFP#F)
- 38 TELEPHONE JACK (SFP#F)
- 39 TELEPHONE JACK (SFP#F)
- 40 TELEPHONE JACK (SFP#F)
- 41 TELEPHONE JACK (SFP#F)
- 42 TELEPHONE JACK (SFP#F)
- 43 TELEPHONE JACK (SFP#F)
- 44 TELEPHONE JACK (SFP#F)
- 45 TELEPHONE JACK (SFP#F)
- 46 TELEPHONE JACK (SFP#F)
- 47 TELEPHONE JACK (SFP#F)
- 48 TELEPHONE JACK (SFP#F)
- 49 TELEPHONE JACK (SFP#F)
- 50 TELEPHONE JACK (SFP#F)
- 51 TELEPHONE JACK (SFP#F)
- 52 TELEPHONE JACK (SFP#F)
- 53 TELEPHONE JACK (SFP#F)
- 54 TELEPHONE JACK (SFP#F)
- 55 TELEPHONE JACK (SFP#F)
- 56 TELEPHONE JACK (SFP#F)
- 57 TELEPHONE JACK (SFP#F)
- 58 TELEPHONE JACK (SFP#F)
- 59 TELEPHONE JACK (SFP#F)
- 60 TELEPHONE JACK (SFP#F)
- 61 TELEPHONE JACK (SFP#F)
- 62 TELEPHONE JACK (SFP#F)
- 63 TELEPHONE JACK (SFP#F)
- 64 TELEPHONE JACK (SFP#F)
- 65 TELEPHONE JACK (SFP#F)
- 66 TELEPHONE JACK (SFP#F)
- 67 TELEPHONE JACK (SFP#F)
- 68 TELEPHONE JACK (SFP#F)
- 69 TELEPHONE JACK (SFP#F)
- 70 TELEPHONE JACK (SFP#F)
- 71 TELEPHONE JACK (SFP#F)
- 72 TELEPHONE JACK (SFP#F)
- 73 TELEPHONE JACK (SFP#F)
- 74 TELEPHONE JACK (SFP#F)
- 75 TELEPHONE JACK (SFP#F)
- 76 TELEPHONE JACK (SFP#F)
- 77 TELEPHONE JACK (SFP#F)
- 78 TELEPHONE JACK (SFP#F)
- 79 TELEPHONE JACK (SFP#F)
- 80 TELEPHONE JACK (SFP#F)
- 81 TELEPHONE JACK (SFP#F)
- 82 TELEPHONE JACK (SFP#F)
- 83 TELEPHONE JACK (SFP#F)
- 84 TELEPHONE JACK (SFP#F)
- 85 TELEPHONE JACK (SFP#F)
- 86 TELEPHONE JACK (SFP#F)
- 87 TELEPHONE JACK (SFP#F)
- 88 TELEPHONE JACK (SFP#F)
- 89 TELEPHONE JACK (SFP#F)
- 90 TELEPHONE JACK (SFP#F)
- 91 TELEPHONE JACK (SFP#F)
- 92 TELEPHONE JACK (SFP#F)
- 93 TELEPHONE JACK (SFP#F)
- 94 TELEPHONE JACK (SFP#F)
- 95 TELEPHONE JACK (SFP#F)
- 96 TELEPHONE JACK (SFP#F)
- 97 TELEPHONE JACK (SFP#F)
- 98 TELEPHONE JACK (SFP#F)
- 99 TELEPHONE JACK (SFP#F)
- 100 TELEPHONE JACK (SFP#F)

- GENERAL NOTES:**
- 1 E.C. TO LABEL EACH RECEPTACLE AND EXHAUST FAN SWITCH WITH CIRCUIT NUMBER AND INTENDED USE.
  - 2 ALL PHONES LINES TO BE GROUNDED. PROVIDE 120V SERVICE W/ ISOLATED GROUND RECEPTACLE AND SINGLE POINT GROUNDING FOR U.S. S.I. EQUIPMENT.
  - 3 ALL BELLS SHALL BE 2-TONE. TRASH DOOR BELL SHALL BE DIFFERENT FROM DELIVERY DOORS. RE: SECURITY PLAN.
  - 4 ALL OUTLETS & SWITCHES IN THE BUILDING AND CLOSET AREAS SHALL BE LABELED WITH PANEL & CIRCUIT NUMBERS. RECEPTACLES AT COFFEE STEP UP COUNTER & FOOD SERVICE COUNTER SHALL ALSO BE LABELED TO IDENTIFY EQUIPMENT SERVED. A PROFESSIONAL LAB. MARKER SHALL BE UTILIZED FOR ALL LABELS. RE: DETAIL THIS SHEET.
  - 5 RE: BLUZZERS, DELIVERY DOOR RELEASE. ALL ASSOCIATED PUSH BUTTONS, SWITCHES, & WIRING ARE TO BE PROVIDED BY ALARM SYSTEM CONTRACTOR.
  - 6 ALL RECEPTACLES FED FROM PANEL "RPH" SHALL BE GRAY IN COLOR AND ISOLATED GROUND TYPE RECEPTACLES. HURBELL, R3000R OR APPROVED EQUAL.
  - 7 ALL RECEPTACLES FED FROM PANEL "RPI" SHALL BE ORANGE IN COLOR AND ISOLATED GROUND TYPE RECEPTACLES. HURBELL, R3000R OR APPROVED EQUAL.
  - 8 ALL GFI RECEPTACLES SHALL BE DUPLEX RECEPTACLES U.S. WITH LED INDICATOR LIGHT. LEVITON # 6884-01 OR APPROVED EQUAL. NO FEED THRU PROTECTION PERMITTED.
  - 9 ALL 120V, 15 TO 30 AMP RECEPTACLES IN THE FOOD SERVICE AREA SHALL BE GFI TYPE. PROVIDE WEATHERPROOF WITH "WILE IN USE" COVERS (WHERE INDICATED (RPI)).
  - 10 DATA TELEPHONE RECEPTACLES INDICATED ON THIS DRAWING FOR REFERENCE ONLY. REFER TO E4 & E11 FOR INSTALLATION DETAILS.
  - 11 ALL RECEPTACLES SHALL BE MOUNTED AT 18" AFF UNLESS OTHERWISE NOTED.
  - 12 LIGHTING AND POWER BRANCH CIRCUIT CONDUITS SHALL BE MINIMUM #12 AWG UNLESS NOTED OTHERWISE IN PANEL SCHEDULES OR ON THIS SHEET.
  - 13 THESE ELECTRICAL PLANS HAVE BEEN DESIGNED AND THIS PROJECT IS TO BE CONSTRUCTED IN ACCORDANCE WITH THE 2014 EDITION OF THE NATIONAL ELECTRICAL CODE.
  - 14 RE: DETAIL THIS SHEET FOR ELECTRICAL WORK REQUIRED AT REAR TRASH COMPOUND. RE: CIVIL DRAWINGS FOR COMPOUND LOCATION.
  - 15 ALL FINAL CONNECTIONS TO THE REFRIGERATION DOOR HEADERS AND REFRIGERATION LIGHTS ARE THE RESPONSIBILITY OF THE GC.
  - 16 RECEPTACLES OF 15 AND 20 AMPS, 120 AND 208 VOLTS INSTALLED IN VET LOCATION SHALL HAVE AN "IN USE" INDICATOR THAT IS WEATHERPROOF WHETHER OR NOT A COUPLER IS INSERTED. OUTLET BOX HOOD INSTALLED FOR THIS PURPOSE SHALL BE LISTED AND IDENTIFIED AS "EXTRA DUTY".

- KEYNOTES:**
- 1 SELF-TEST/RESET BLANK FACE GFI OUTLET TO BE INSTALLED ABOVE COUNTER TO ALLOW EASY RESET OF GFI OUTLET.
  - 2 ELECTRICAL CONTRACTOR SHALL INSTALL (1) 2"X4" BACKBOX AT 48" WITH CONDUIT AND PULL STRING TO ABOVE CEILING FOR TELEPHONE LANDLINE. PROVIDE CLEAR, PERMANENT LABEL AT THIS PHONE STATING "911 EMERGENCY USE ONLY".
  - 3 NOT USED.
  - 4 NO RECEPTACLES SHALL BE INSTALLED IN ELECTRIC SAFE AREA. ALL WIRING IN CHECKOUT AREA TO BE NO. 14 CABLE AND INSTALLED WITHIN PANELS. SEE SHEET BY OTHERS.
  - 5 THIS RECEPTACLE SHALL BE WEATHERPROOF (RPI). PROVIDE "WILE IN USE" COVER.
  - 6 MOUNT SYSTEMS RECEPTACLE TO COUNTER WITH RED ANGLE BRACKET TO 24" ROUGH.
  - 7 FOR EXACT LOCATION OF ALL DEVICES IN MANAGERS OFFICE, RE: ARCHITECTURAL INTERIOR ELEVATION SHEET.
  - 8 FOR EXACT LOCATION OF ALL DEVICES IN ELECTRICAL ROOM, RE: ARCHITECTURAL DRAWINGS AND E.E.
  - 9 E.C. TO INSTALL (1) 2"X4" BACK BOX FOR DATA OUTLET AT 48" AFF FOR THE TIME CLOCK.
  - 10 INSTALL CONDUIT AND PULL STRING TO ABOVE CEILING FROM DATA BOX.
  - 11 PANEL FRAMES MONITOR PANEL PROVIDED BY REFRIGERATION CONTRACTOR.
  - 12 E.C. SHALL FURNISH AND INSTALL ALL NECESSARY EMERGENCY STOP AND E-STOP RE-SET BUTTONS. AN E-STOP SHALL BE LOCATED IN THE CHECKOUT AND ONE ON THE BUILDING EXTERIOR. COMPARE AND CORRECT DIMENSIONS WITH LOCAL A.I.M. CONTRACTOR.
  - 13 E.C. SHALL PROVIDE 120V FEED TO FLUSH VALVE TRANSFORMERS MOUNTED TO WALL ABOVE CEILING. PROVIDE TERMINATIONS FOR ALL FLUSH VALVE WIRING ROUTED TO TRANSFORMERS. E.C. TO PROVIDE ANY REQUIRED RED CONDUIT AND CONDUIT WIRING FROM TRANSFORMERS TO VALVES BY PLUMBING CONTRACTOR.
  - 14 PROVIDE PRINTER RECEPTACLE AND DATA OUTLET IN A COMMON 2-GANG BOX WITH DIVIDER. PROVIDE SUITABLE 2-GANG COVER PLATE FOR DEVICES.
  - 15 FOOD SERVICE/COFFEE BACKWALL RECEPTACLES LOCATED ABOVE COUNTER, DUPLEX GFI OR SIMPLEX, SHALL BE PROVIDED WITH STAINLESS STEEL COVER PLATES AND SHALL BE MOUNTED IN HORIZONTAL POSITION.
  - 16 CONDENSATE HEAT TRACE WILL BE 220V FED OFF HOT COIL CIRCUIT BY REFRIGERATION CONTRACTOR.
  - 17 E.C. TO PROVIDE DUPLEX GFI RECEPTACLES WITH RED DOT CODE. KEEP FLUSH MOUNTED 2" AND WEATHERPROOF COVER. NO FEED THRU PROTECTION PERMITTED.
  - 18 MOUNT THE GASOLINE EMERGENCY SHUT-OFF PUSH BUTTON 2" BACK FROM FACE OF CABINET. MOUNT UNDER COUNTER TOP.
  - 19 E.C. SHALL INSTALL AN ISOLATED GROUND (IG) DUPLEX RECEPTACLE IN SINGLE-GANG BOX CENTER RECEPTACLES FOR ATM BENCH MACHINE.
  - 20 NOT USED.
  - 21 PROVIDE 2"X4" OUTLET BOXES. CIRCUIT FOR THIS SIMPLEX RECEPTACLE PASSES THRU FILTER PROVIDED BY SINK CONTRACTOR. E.C. TO COORDINATE INSTALLATION WITH SINK CONTRACTOR. RE: DETAIL THIS SHEET.
  - 22 PROVIDE 15 AMP RECEPTACLES FOR COMPUTER RACK PDU MOUNTED AT 18" AFF.
  - 23 E.C. SHALL FLUSH MOUNT ALL RECEPTACLES ON THIS WALL ABOVE COUNTER AT 48" AFF.
  - 24 RECEPTACLE TO BE LOCATED BEHIND MONITOR ON SIGNAGE. SEE SHEET 04 FOR EQUIPMENT LOCATION AND MOUNTING HEIGHT. CONCEAL POWER AND DATA CORDS BEHIND EQUIPMENT.
  - 25 E.C. TO PROVIDE BACK BOX, CONDUIT AND PULL STRING FOR FIRE SECURITY SYSTEM. RE: SHEETS E4 AND E5 FOR MORE INFORMATION.
  - 26 INSTALL #8 AWG GREEN INSULATED COPPER GROUND WIRE. CONNECT TO MAIN SERVICE ENTRANCE GROUND LEAVE IN LOOP.
  - 27 OUTLET TO BE MOUNTED UNDER COUNTER IN MILLWORK.
  - 28 PROVIDE JUNCTION BOX FOR UPS UNIT MOUNTED AT 36" AFF.
  - 29 PROVIDE JUNCTION BOX FOR UPS UNIT MOUNTED AT 36" AFF.
  - 30 ALL RECEPTACLES IN THE FOOD SERVICE AREA SHALL BE MOUNTED HORIZONTALLY. COORDINATE ALL RECEPTACLE LOCATIONS WITH THE FOOD SERVICE EQUIPMENT BEING INSTALLED.
  - 31 COORDINATE EXACT LOCATION OF JUNCTION BOXES WITH REFRIGERATION CONTRACTOR. GENERAL CONTRACTOR RESPONSIBLE FOR FINAL CONNECTION TO COOL LIGHTS AND HEAT TRACING CABLES TO ROOF OF REFRIGERATION UNIT BY REFRIGERATION CONTRACTOR.
  - 32 NOT USED.
  - 33 PROVIDE PLUS, RECEPTACLE AND SUITABLE COVER FOR CONNECTION OF OVEN CABLE. REVIEW OVEN INSTALLATION DETAILS AND COORDINATE EXACT REQUIREMENTS FOR FINAL CONNECTION.
  - 34 E.C. TO INSTALL (2) 2"X4" BACK-BOXES STACKED WITH CONDUIT AND PULL STRINGS TO CEILING FOR HVAC SENSORS. COORDINATE DEVICE LOCATION ON MECHANICAL SHEET M1.
  - 35 E.C. TO INSTALL 2"X4" BACK BOX AT 48" (AND) WITH CONDUIT AND PULL STRINGS TO ABOVE CEILING FOR HVAC SENSOR. COORDINATE WITH DEVICE LOCATION ON MECHANICAL SHEET M1.
  - 36 E.C. TO INSTALL (1) 2"X4" BACK-BOXES AT HEIGHT GIVEN ON PLAN WITH CONDUITS AND PULL STRING TO ABOVE CEILING FOR GAS CONNECTION TO OVEN(S).
  - 37 E.C. TO INSTALL (1) 2"X4" BACK-BOXES AT HEIGHT GIVEN ON PLAN WITH CONDUITS AND PULL STRING TO CEILING FOR TELEPHONES.
  - 38 RE: TRASH COMPOUND, RE: CIVIL DRAWINGS FOR LOCATION OF TRASH COMPOUND.
  - 39 PORTABLE GENERATOR CONNECTION BOX. RE: DETAIL ON SHEET E6. ALSO, RE: SINGLE LINE DIAGRAM SHEET E7 FOR MORE INFORMATION.
  - 40 SURFACE MOUNT RECEPTACLE AND DATA TO MOUNTING BRACKET BEHIND DIGITAL MONITORS. RUN FLEX METAL CONDUIT FROM ABOVE CEILING DOWN TO RECEPTACLE. RUN DATA AND POWER CABLES AND FLEX CONDUIT DOWN FROM CEILING IN SUPPORT TRAY. PROVIDE 10' OF SLACK IN CABLES AND FLEX CONDUIT ABOVE CEILING. PLUG 21 DOORSE SIGNS AT EACH END OF MONITORS TO JUNCTION BOX AT EACH-END RECEPTACLE. REFERENCE ARCHITECTURAL DETAIL FOR RECEPTACLE FOR MONITORS. RE: DETAIL THIS SHEET.
  - 41 NOT USED.
  - 42 PROVIDE DISCONNECT WITH ACCESSIBLE COVER TO PREVENT ACCIDENTAL SHUT-OFF.
  - 43 DRING POWER DATA UP FROM STUB-UP IN WALL INTO CABINETS. RE: SHEET E4.
  - 44 PROVIDE 1/4"X2" AND MATCHING 90 DEGREE 1/4"X2" FOR COFFEE BREWERS.
  - 45 E.C. TO PROVIDE FLUSH MOUNTED RED DOT CODE. KEEP FLUSH MOUNTED 2" INCH IN USE WEATHERPROOF COVER FOR POWER WASH.

**ELECTRICAL ABBREVIATIONS LEGEND:**

AC/AC	AIR CONDITIONING
AFU	ABOVE FINISHED FLOOR
ALT	ALTERNATE HAVING JURISDICTION
AMP/A	AMPERE
ATS	AUTOMATIC TRANSFER SWITCH
AV	AUDIO VISUAL
AWG	AMERICAN WIRE GAUGE
BAS	BUILDING AUTOMATION SYSTEM
BLDG	BUILDING
CB	CIRCUIT BREAKER
C	CONDUIT
CAN/CA	CANDELA
COMPT	COMPUTER
CT	CURRENT TRANSFORMER
CUST	CUSTOMER
E.C.	ELECTRICAL CONTRACTOR
ELEC	ELECTRICAL
EMT	ELECTRICAL METALLIC TUBING
EOL	END OF LINE
EMV	ELECTRIC WATER VALVE
FACP	FIRE ALARM CONTROL PANEL
C-2	GROUND
GF/GFI	GROUND FAULT CIRCUIT INTERRUPTER
GRC	GALVANIZED RIGID CONDUIT
IG	INTERMEDIATE METAL CONDUIT
INFO	INFORMATION
KV	KILO (THOUSAND) AMPERE INTERRUPT CAPACITY
KVA	KILO (THOUSAND) VOLT AMPERES
KWH	KERNELED BASED VIRTUAL MACHINE CONTROL VIDEOS MONITORS
KW	KILO (THOUSAND) WATTS
LET	LET LIST
MC	METAL CLAD
MDP	MAIN DISTRIBUTION PANEL
NEUTRAL	NEUTRAL
NC	NORMALLY CLOSED
NAC	NOTIFICATION APPLIANCE CIRCUIT
NEC	NATIONAL ELECTRICAL CODE
PH	PHASE
PVC	POLYVINYL CHLORIDE
RECP/T	RECEPTACLE
ROOM	ROOM
RR	RESTROOM
SEV	SERVER
TELE	TELEPHONE
TERM	TERMINAL
TRNK	TRINER/DIAGNOSTIC HIGH HEAT NYLON UNDER COUNTER
UMD	UNLESS NOTED OTHERWISE
UPS	UNINTERRUPTED POWER SYSTEM
V	VOLTS
VEST	VESTIBULE
W	WIRE
WP	WEATHER PROOF



**1 ELECTRICAL POWER PLAN**  
1/4" = 1'-0"

**4 TRASH COMPOUND ELECTRICAL PLAN**  
1/4" = 1'-0"

**2 RECEPTACLE IDENTIFICATION DETAIL**  
NOT TO SCALE

**WAWA & Peterson**  
Planners  
Architects  
Interior Designers  
1500 West Baltimore Pike  
Hudson, PA 15882  
Phone: 814.338.1414  
Fax: 814.338.1415  
www.wawa.com

**CLIENT NAME**  
**WAWA**  
280 WEST BALTIMORE PIKE  
WAWA, PENNSYLVANIA 15083

**PROJECT NAME**  
**WAWA F85FB 2018.01 STORE #5275-LIT**  
9821 STATE ROAD 62  
HUDSON, FL 34689

**SHEET TITLE**  
**ELECTRICAL POWER PLAN**

Project No.	2101002
Revision Schedule	
No.	1
Date	03/27/2017
Prepared By	08/20/2016
Checked By	08/20/2016
Reviewed By	08/20/2016
Approved By	08/20/2016
Drawn By	08/20/2016
Scale	
Sheet No.	
Total Sheets	
Author	
Checker	
Reviewer	
Approver	
Printer	

**E1**