

1 PUBLIC RESTROOM ACCESSORIES DIAGRAM

**GENERAL NOTES**

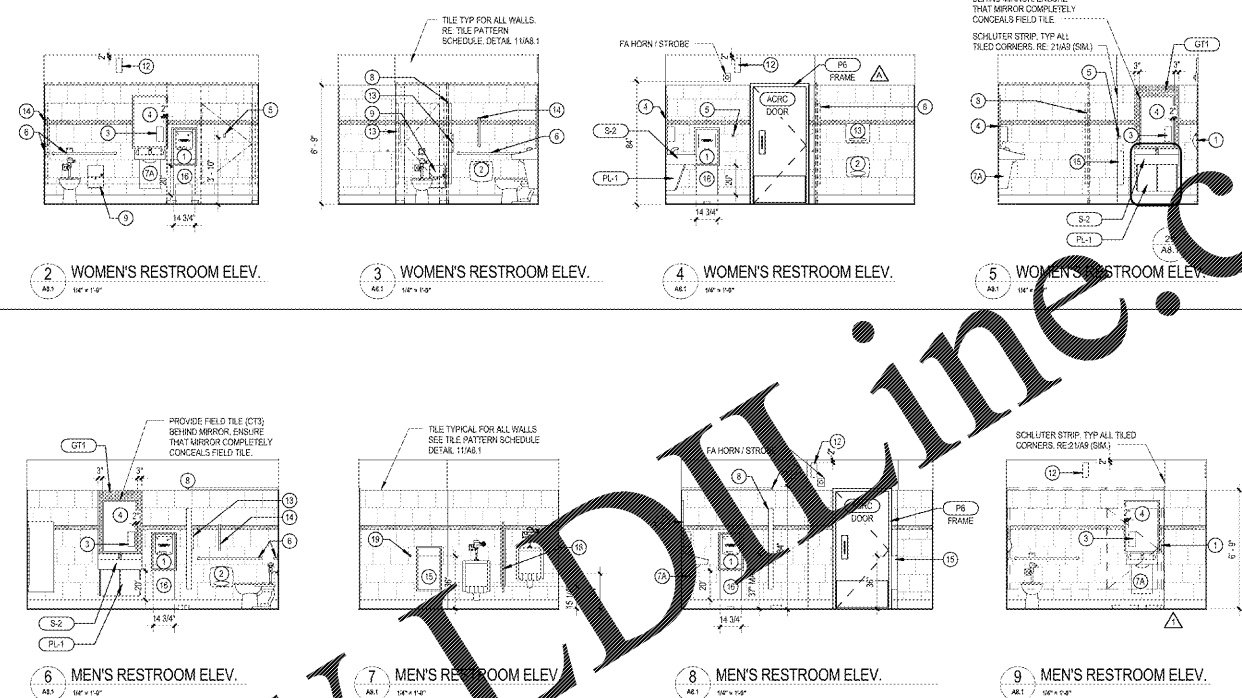
1. ALL DIMENSIONS SHALL BE TO FACE OF FINISH U.N.O.
2. INSTALL A BEAD OF CLEAR SILICONE AROUND ALL TOILET SENSORS AND ESCUTCHEON RINGS.

**BARRIER FREE NOTES**

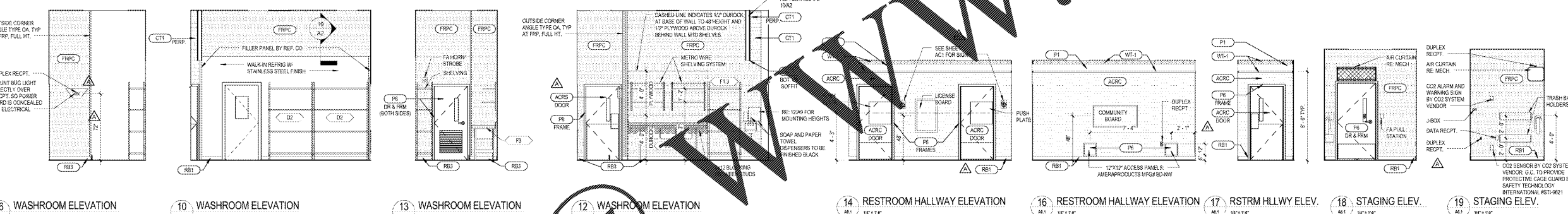
TOILET ROOM TO COMPLY WITH ALL BARRIER FREE DESIGN REQUIREMENTS INCLUDING BUT NOT LIMITED TO:

- GRAB BARS:** TOP OF GRIPPING SURFACES ON GRAB BARS WILL BE 33" OF ABOVE FLOOR AS SPECIFIED ON SHEET AC1.
- MISSIOS:** (1) 24 X 36" BOTTOM AT 40" A.F.F. MAX. AT EACH LAVATORY.
- LAVATORY:** 36" MIN. A.F.F. BOTTOM OF APRON 27" MIN. A.F.F. LEVER HANDLES ON FAUCETS. IF APPLICABLE, INSULATE HOT WATER SUPPLY AND DRAIN PIPES. ALL PIPES BELOW LAVATORIES WILL BE INSULATED OR CONFIGURED TO PROTECT AGAINST CONTACT IN ACCORDANCE TO SECTION 08130-5.00.
- DOORS:** 36" WIDE WITH PUSH/PULL HARDWARE AND SIGNAGE.
- URINAL:** MAXIMUM CLEARANCE TO RIM OF URINAL IS 17" AS SPECIFIED ON SHEET AC1.
- WATER CLOSET:** RIM TOP AT 17" 1/2" A.F.F. AUTOMATIC FLUSH CONTROL.
- TOILET BOARD DISPENSERS:** CENTERLINE OF TOILET PAPER DISPENSER WILL BE 7" FROM THE FRONT OF WATER CLOSET.
- CHANGES TOWEL & OTHER DISPENSERS:** 48" MAX. H.T.A.F.F. TO LINE OF OPERATION.
- NOA**
- DISPENSER FREE:** PROVIDE 12" MIN. CLEAR OPENING AND SELF-CLOSING DOORS FOR ACCESSIBLE STALLS.

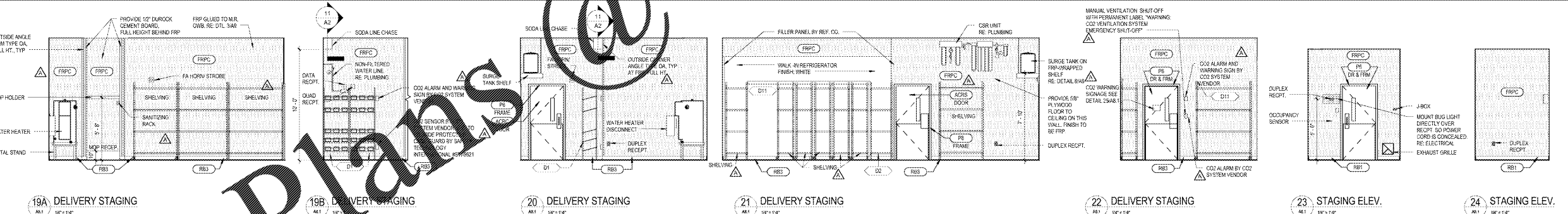
RE: SHEET AC1 FOR ACCESSIBILITY REQUIREMENTS



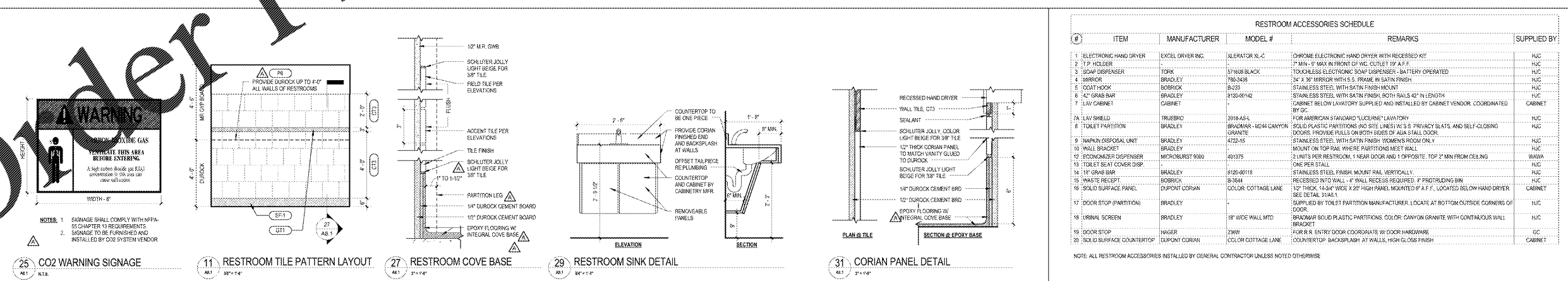
2 WOMEN'S RESTROOM ELEV. 3 WOMEN'S RESTROOM ELEV. 4 WOMEN'S RESTROOM ELEV. 5 WOMEN'S RESTROOM ELEV. 6 MEN'S RESTROOM ELEV. 7 MEN'S RESTROOM ELEV. 8 MEN'S RESTROOM ELEV. 9 MEN'S RESTROOM ELEV.



10 WASHROOM ELEVATION 11 WASHROOM ELEVATION 12 WASHROOM ELEVATION 13 WASHROOM ELEVATION 14 RESTROOM HALLWAY ELEVATION 16 RESTROOM HALLWAY ELEVATION 17 RSTRM HLLWY ELEV. 18 STAGING ELEV. 19 STAGING ELEV.



19A DELIVERY STAGING 19B DELIVERY STAGING 20 DELIVERY STAGING 21 DELIVERY STAGING 22 DELIVERY STAGING 23 STAGING ELEV. 24 STAGING ELEV.



25 CO2 WARNING SIGNAGE 26 CO2 WARNING SIGNAGE 27 RESTROOM TILE PATTERN LAYOUT 28 RESTROOM TILE PATTERN LAYOUT 29 RESTROOM COVE BASE 30 RESTROOM COVE BASE 31 RESTROOM SINK DETAIL 32 RESTROOM SINK DETAIL 33 CORIAN PANEL DETAIL 34 CORIAN PANEL DETAIL

#	ITEM	MANUFACTURER	MODEL #	REMARKS	SUPPLIED BY
1	ELECTRONIC HAND DRYER	EXCEL DRYER INC.	ALEXATOR XL-C	CHROME ELECTRONIC HAND DRYER WITH RECESSED KIT	HUC
2	T.P. HOLDER	TORIK	371888 BLACK	7" MIN. 9" MAX. IN FRONT OF H.C. CUTLE 19" A.F.F.	HUC
3	SOAP DISPENSER	BRADLEY	790-3438	TOUCHLESS ELECTRONIC SOAP DISPENSER - BATTERY OPERATED	HUC
4	MIRROR	BRADLEY	790-3438	34" X 36" MIRROR WITH S.S. FRAME IN SATIN FINISH	HUC
5	COAT HOOK	BOBBIK	8-233	STAINLESS STEEL WITH SATIN FINISH MOUNT	HUC
6	4" GRAB BAR	BRADLEY	9120-09142	STAINLESS STEEL WITH SATIN FINISH. BOTH RAILS 42" IN LENGTH	HUC
7	LAV CABINET	MICROBURST	8080	CABINET BELOW LAVATORY SUPPLIED AND INSTALLED BY CABINET VENDOR. COORDINATED BY GC.	CABINET
8	TOILET PARTITION	BRADLEY	3918-AS4	FOR AMERICAN STANDARD 'LUCERNE' LAVATORY	HUC
9	WAPION DISPOSAL UNIT	BRADLEY	4722-15	SOLID PLASTIC PARTITIONS AND SITS LINES) W/ S.S. PRIVACY SLATS, AND SELF-CLOSING DOORS. PROVIDE PULLS ON BOTH SIDES OF ADA STALL DOOR.	HUC
10	HALL BRACKET	BRADLEY	4722-15	STAINLESS STEEL WITH SATIN FINISH. WOMEN'S ROOM ONLY	HUC
11	ECONOMIZER DISPENSER	MICROBURST	8080	3 UNITS PER RESTROOM, 1 NEAR DOOR AND 1 OPPOSITE. TOP 2" MIN FROM CEILING	WASHA
12	TOILET SEAT COVER DISP.	BRADLEY	9120-09118	ONE PER STALL	HUC
13	18" GRAB BAR	BRADLEY	9120-09118	STAINLESS STEEL FINISH. MOUNT RAIL VERTICALLY.	HUC
14	WASTE RECEPT	DUPONT CORNAN	2369	RECESSED INTO WALL. 4" WALL RECESS REQUIRED. 4" PROTRUDING BN	HUC
15	SOLID SURFACE PANEL	DUPONT CORNAN	2369	COLOR: COTTAGE LANE. SEE DETAIL 31A-B.1.	CABINET
16	DOOR STOP (PARTITION)	BRADLEY	18" WIDE WALL MTD	SUPPLIED BY TOILET PARTITION MANUFACTURER. LOCATE AT BOTTOM OUTSIDE CORNERS OF DOOR.	HUC
17	URINAL SCREEN	BRADLEY	18" WIDE WALL MTD	BRADLEY SOLID PLASTIC PARTITIONS. COLOR: CANYON GRANITE WITH CONTINUOUS WALL	HUC
18	DOOR STOP	HAUER	2369	BRACKET	HUC
19	DOOR STOP	DUPONT CORNAN	2369	FOR R & ENTRY DOOR COORDINATE W/ DOOR HARDWARE	GC
20	SOLID SURFACE COUNTERTOP	DUPONT CORNAN	2369	COLOR: COTTAGE LANE. COUNTERTOP BACKSPLASH AT WALLS, HIGH GLOSS FINISH	CABINET

NOTE: ALL RESTROOM ACCESSORIES INSTALLED BY GENERAL CONTRACTOR UNLESS NOTED OTHERWISE

**WAWA**  
 260 WEST BALTIMORE PIKE  
 WAWA, PENNSYLVANIA 19053

**PROJECT NAME:** WAWA F85FB 2018.01 STORE #5275-LIT  
**9021 STATE ROAD 52  
 HUDSON, FL 34689**

**CLIENT NAME:** WAWA  
**CLIENT TIME:** 01/27/2017  
**DATE:** 03/27/2017  
**PREPARED BY:** J. L. HARRIS  
**DATE:** 08/18/2018  
**SCALE:** AS SHOWN

**INTERIOR ELEVATIONS**

**Sheet Title:** A8.1