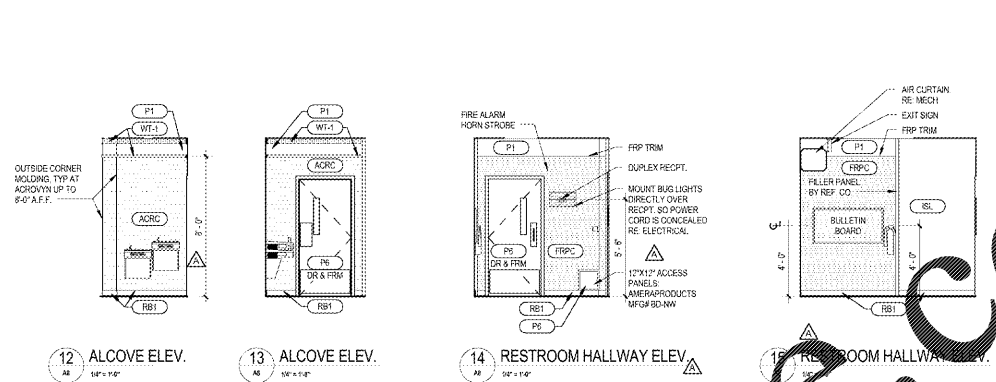
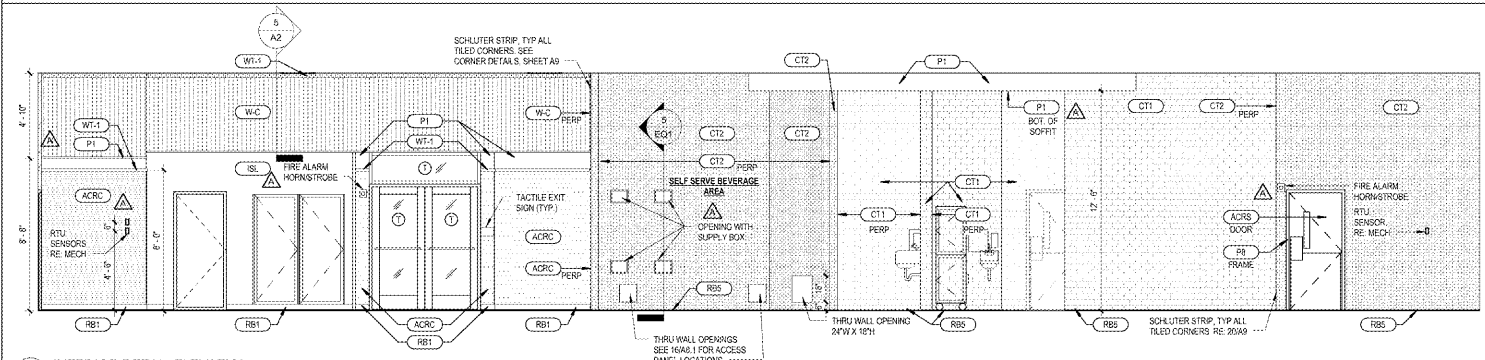


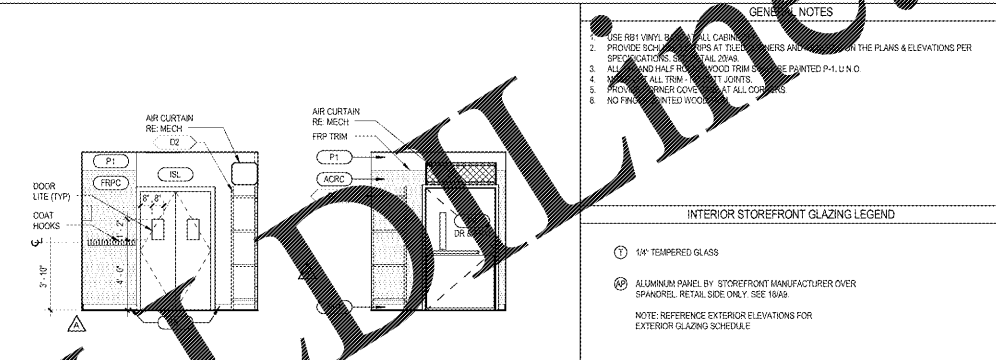
1 INTERIOR RETAIL ELEVATION



12 ALCOVE ELEV. 13 ALCOVE ELEV. 14 RESTROOM HALLWAY ELEV. 15 RESTROOM HALLWAY ELEV.



2A INTERIOR RETAIL ELEVATION



16 RESTROOM HALLWAY ELEV. 17 RESTROOM HALLWAY ELEV.

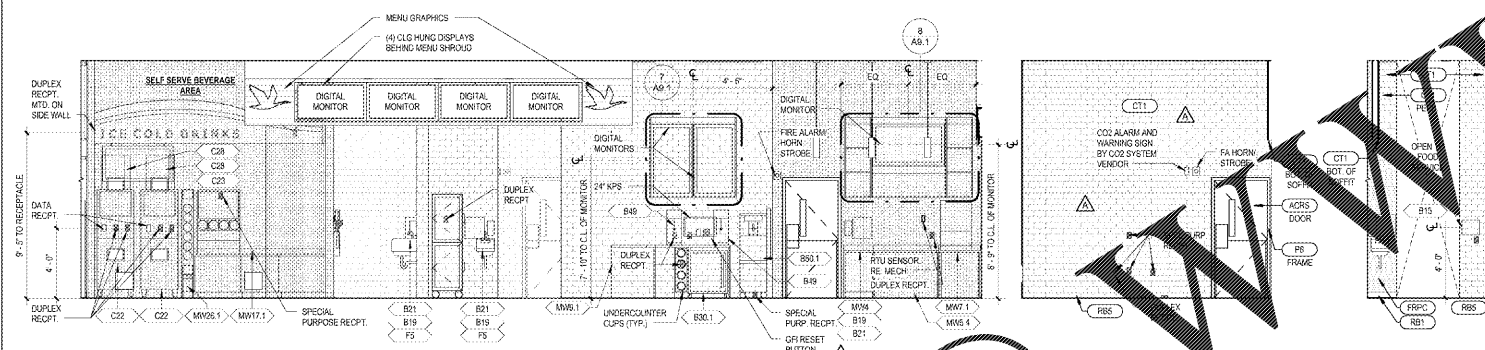
GENERAL NOTES

- USE RB1 WINDOW WALL CASINGS AT ALL CORNERS AND AT THE PLANS & ELEVATIONS PER SPECIFICATIONS, SEE DETAIL 10A8.
- ALUMINUM PANELS AT STOREFRONT MANUFACTURED OVER SPANDREL. RETAIL SIDE ONLY. SEE 10A9.
- PROVIDE 1/2" ALL TRIM.
- PROVIDE 1/2" CORNER COVERS AT ALL CORNERS.
- NO FINISHED WOODWORK.

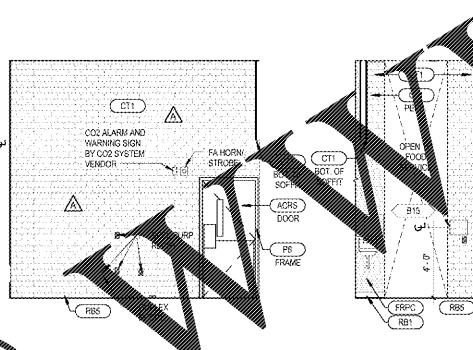
INTERIOR STOREFRONT GLAZING LEGEND

① 1/4" TEMPERED GLASS
 ② ALUMINUM PANEL BY STOREFRONT MANUFACTURER OVER SPANDREL. RETAIL SIDE ONLY. SEE 10A9

NOTE: REFERENCE EXTERIOR ELEVATIONS FOR EXTERIOR GLAZING SCHEDULE.



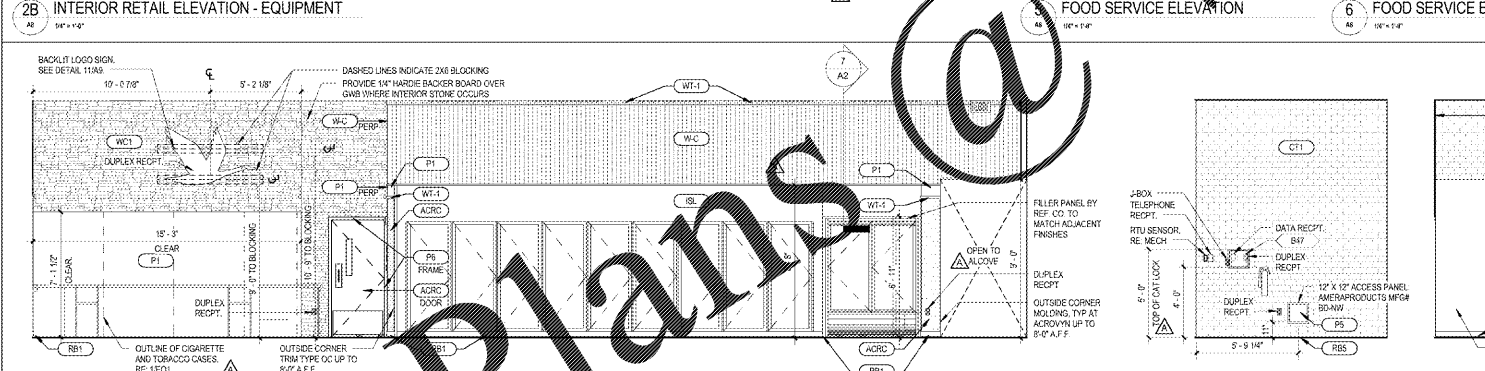
2B INTERIOR RETAIL ELEVATION - EQUIPMENT



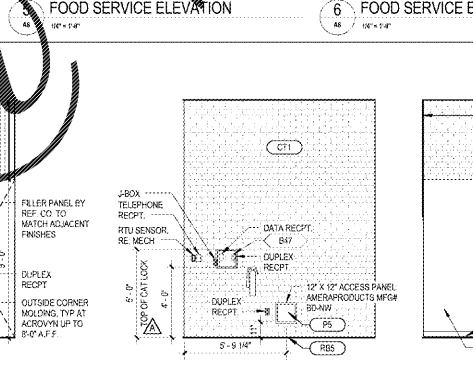
6 FOOD SERVICE ELEVATION

ROOM FINISH SCHEDULE

ROOM NAME	NO.	MATERIAL	WALL	FINISH	CEILING	FINISH	DOOR PANELS	DOOR FRAMES	FLOOR	BASE
VESTIBULE	1	GWB	PTD/ACRC	MR GWB	PTD	ALUM	ALUM	ALUM	MAT OVER TERRAZZO	RB1
RETAIL AREA	2	GWB	PTD/ACRC	MR GWB	PTD	ALUM	ALUM	ALUM	TERRAZZO	RB1
FOOD SERVICE	3	MR GWB	TILE/ACRC	ACT1	PTD	ALUM	ALUM	ALUM	TERRAZZO	RB1
OFFICE	4	MR GWB	TILE/ACRC	ACT1	PTD	ALUM	ALUM	ALUM	TERRAZZO	RB1
RESTROOM HALLWAY	5	GWB	PTD/ACRC	ACT2	PTD	ALUM	ALUM	ALUM	TERRAZZO	RB1
RESTROOM	6	GWB	PTD/ACRC	ACT2	PTD	ALUM	ALUM	ALUM	TERRAZZO	RB1
RESTROOM	7	MR GWB	FRPC	ACT2	PTD	ALUM	ALUM	ALUM	TERRAZZO	RB1
RESTROOM	8	MR GWB	FRPC	ACT2	PTD	ALUM	ALUM	ALUM	TERRAZZO	RB1
RESTROOM	9	MR GWB	FRPC	ACT2	PTD	ALUM	ALUM	ALUM	TERRAZZO	RB1
RESTROOM	10	MR GWB	FRPC	ACT2	PTD	ALUM	ALUM	ALUM	TERRAZZO	RB1
RESTROOM	11	MR GWB	FRPC	ACT2	PTD	ALUM	ALUM	ALUM	TERRAZZO	RB1
RESTROOM	12	MR GWB	FRPC	ACT2	PTD	ALUM	ALUM	ALUM	TERRAZZO	RB1
RESTROOM	13	MR GWB	FRPC	ACT2	PTD	ALUM	ALUM	ALUM	TERRAZZO	RB1
RESTROOM	14	MR GWB	FRPC	ACT2	PTD	ALUM	ALUM	ALUM	TERRAZZO	RB1
RESTROOM	15	MR GWB	FRPC	ACT2	PTD	ALUM	ALUM	ALUM	TERRAZZO	RB1
RESTROOM	16	MR GWB	FRPC	ACT2	PTD	ALUM	ALUM	ALUM	TERRAZZO	RB1
RESTROOM	17	MR GWB	FRPC	ACT2	PTD	ALUM	ALUM	ALUM	TERRAZZO	RB1
RESTROOM	18	MR GWB	FRPC	ACT2	PTD	ALUM	ALUM	ALUM	TERRAZZO	RB1
RESTROOM	19	MR GWB	FRPC	ACT2	PTD	ALUM	ALUM	ALUM	TERRAZZO	RB1
RESTROOM	20	MR GWB	FRPC	ACT2	PTD	ALUM	ALUM	ALUM	TERRAZZO	RB1
RESTROOM	21	MR GWB	FRPC	ACT2	PTD	ALUM	ALUM	ALUM	TERRAZZO	RB1
RESTROOM	22	MR GWB	FRPC	ACT2	PTD	ALUM	ALUM	ALUM	TERRAZZO	RB1
RESTROOM	23	MR GWB	FRPC	ACT2	PTD	ALUM	ALUM	ALUM	TERRAZZO	RB1



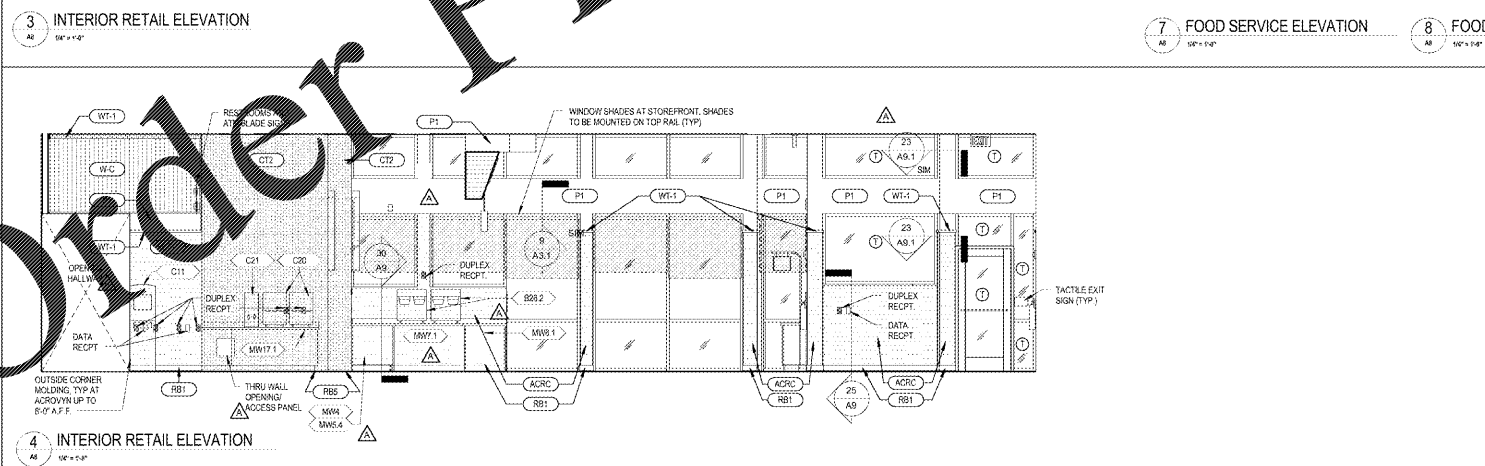
3 INTERIOR RETAIL ELEVATION



7 FOOD SERVICE ELEVATION 8 FOOD SERVICE ELEVATION

INTERIOR FINISH SCHEDULE

SYMB	MATERIAL	MFR	COLOR	REMARKS	NOTES	SUPPLIED BY
ACRC	ACROVYN	IMPACT SPECIALTIES	IRISH CREAM	CLASS 'Y' 48X96 SHEETS	USE AT DOORS AND WALLS AS NOTED. APPLY SHEETS VERTICALLY. TRIMS TO MATCH. CONTACT: 888-24-2897 ORDERS@IMPACTSPECIALTIES.COM. SEE SPECIFICATIONS	GC
ACRC	ACROVYN	IMPACT SPECIALTIES	#10 BRUSHED SILVER SLICE TELLUR	CLASS 'Y' 48X96 SHEETS	USE AT DOORS AND WALLS AS NOTED. SUITE TEXTURE. RUN VERTICALLY. TRIMS TO MATCH. CONTACT: 888-24-2897 ORDERS@IMPACTSPECIALTIES.COM. SEE SPECIFICATIONS	GC
AC11	ACOUSTICAL CEILING	ARMSTRONG	WHITE	#1005 HEALTH ZONE	SQUARE LAY-IN 24" X 24" X 3/4" (SQRUBABLE) ARMSTRONG PRELUBE 15' EXPOSED TEE SYSTEM. COLOR: WHITE. SEE SPECIFICATIONS	HJC
AC12	ACOUSTICAL CEILING	ARMSTRONG	WHITE	#710 CORTEGA	SQUARE LAY-IN 24" X 24" X 3/4" (SQRUBABLE) ARMSTRONG PRELUBE 15' EXPOSED TEE SYSTEM. COLOR: WHITE. SEE SPECIFICATIONS	HJC
CT1	CERAMIC TILE	CROSSVILLE	SIXTEEN CANDLES W/16	4/8" 11" GROUT JOINT	TO BE USED AT FOOD SERVICE. GROUT: LATICRETE SPECTRALOCK PRO PREMIUM EPOXY (SAND) COLOR: #40 LATTICE LATICRETE LATASS. SILICONE SEALANT TO BE USED AT INNER CORNERS & PERIMETERS. OUTSIDE CORNERS: SCHLUTER STRIP COLOR: TUSCAN BEIGE	HJC
CT2	CERAMIC TILE	APPAR	VIBRANT	1" X 1" 1/2" GROUT JOINT	TO BE USED AT COFFEE AREA & SPECIALTY BEVERAGE AREA. GROUT: LATICRETE SPECTRALOCK PRO PREMIUM EPOXY (SAND) COLOR: #40 LATTICE LATICRETE LATASS. SILICONE SEALANT TO BE USED AT INNER CORNERS & PERIMETERS. OUTSIDE CORNERS: SCHLUTER STRIP COLOR: TUSCAN BEIGE	HJC
CT3	CERAMIC TILE	STONEPEAK CERAMICS INC	USHY20202 HONEY HONEY	1/2" X 1/2" 1/8" GROUT JOINT. GROUT FLUSH WITH TILE. 3/8" ROUND BOND PATTERN	RESTROOM WALLS. GROUT: LATICRETE SPECTRALOCK PRO PREMIUM EPOXY (SAND) COLOR: #40 LATTICE LATICRETE LATASS. SILICONE SEALANT TO BE USED AT INNER CORNERS & PERIMETERS. OUTSIDE CORNERS: SCHLUTER STRIP COLOR: LIGHT BEIGE	HJC
EF-1	EPOXY FLOOR	KEY RESIN CO	W/16A DUST-BLENDING 3D-AW	1/8" THICK 1/2" HIGH INTEGRAL FORMED BASE	RESTROOM FLOOR. INTERIOR DOOR. 1/8" WALL. RE: #10. TRASH COMPACTOR. CONCRETE FLOOR. RE: #10. USE FRP MOLDING TO FINISH FRP	GC
EPK1	EPOXY WALL FINISH	BENJAMIN MOORE	GLACIER WHITE #OC-37	SEE SPEC	RESTROOM WALLS. GROUT: LATICRETE SPECTRALOCK PRO PREMIUM EPOXY (SAND) COLOR: #40 LATTICE LATICRETE LATASS. SILICONE SEALANT TO BE USED AT INNER CORNERS & PERIMETERS. OUTSIDE CORNERS: SCHLUTER STRIP COLOR: LIGHT BEIGE	GC
EPK2	CONCRETE SEALER	BENJAMIN MOORE	POLYMO EPOXY CLEAR	SEE SPEC	RESTROOM WALLS. GROUT: LATICRETE SPECTRALOCK PRO PREMIUM EPOXY (SAND) COLOR: #40 LATTICE LATICRETE LATASS. SILICONE SEALANT TO BE USED AT INNER CORNERS & PERIMETERS. OUTSIDE CORNERS: SCHLUTER STRIP COLOR: LIGHT BEIGE	GC
FRPC	REINFORCED PLASTIC	CRANE COMPOSITES	BEIGE #6070	CLASS 'C' 48" X 96" SHEETS	RESTROOM WALLS. GROUT: LATICRETE SPECTRALOCK PRO PREMIUM EPOXY (SAND) COLOR: #40 LATTICE LATICRETE LATASS. SILICONE SEALANT TO BE USED AT INNER CORNERS & PERIMETERS. OUTSIDE CORNERS: SCHLUTER STRIP COLOR: LIGHT BEIGE	HJC
G11	GLASS TILE - ACCENT	CROSSVILLE	GLASS BLACK & BARS 2502 GRANITE	1/4" X 1/4" MESH MOUNTED. 1/8" GROUT JOINT. GROUT FLUSH WITH TILE	RESTROOM WALLS. GROUT: LATICRETE SPECTRALOCK PRO PREMIUM EPOXY (SAND) COLOR: #40 LATTICE LATICRETE LATASS. SILICONE SEALANT TO BE USED AT INNER CORNERS & PERIMETERS. OUTSIDE CORNERS: SCHLUTER STRIP COLOR: LIGHT BEIGE	HJC
ISL	INSUL. PHIL. ULTRA ENTRY	REF. CO	MATS INC	3/8" THICK	RESTROOM WALLS. GROUT: LATICRETE SPECTRALOCK PRO PREMIUM EPOXY (SAND) COLOR: #40 LATTICE LATICRETE LATASS. SILICONE SEALANT TO BE USED AT INNER CORNERS & PERIMETERS. OUTSIDE CORNERS: SCHLUTER STRIP COLOR: LIGHT BEIGE	KYSOR
M1	BASE COLOR: GRAY BASE WITH CHARCOAL SPLASH	REF. CO	MATS INC	3/8" THICK	RESTROOM WALLS. GROUT: LATICRETE SPECTRALOCK PRO PREMIUM EPOXY (SAND) COLOR: #40 LATTICE LATICRETE LATASS. SILICONE SEALANT TO BE USED AT INNER CORNERS & PERIMETERS. OUTSIDE CORNERS: SCHLUTER STRIP COLOR: LIGHT BEIGE	KYSOR
M2	ANTI-FATIGUE SURFACE FL	ECORNE INTERNATIONAL	ESQ/SHAW #1037	SEE SPEC	RESTROOM WALLS. GROUT: LATICRETE SPECTRALOCK PRO PREMIUM EPOXY (SAND) COLOR: #40 LATTICE LATICRETE LATASS. SILICONE SEALANT TO BE USED AT INNER CORNERS & PERIMETERS. OUTSIDE CORNERS: SCHLUTER STRIP COLOR: LIGHT BEIGE	GC
P1	PAINT	BENJAMIN MOORE	MUSLIN #1037	SEMI-GLOSS	RESTROOM WALLS. GROUT: LATICRETE SPECTRALOCK PRO PREMIUM EPOXY (SAND) COLOR: #40 LATTICE LATICRETE LATASS. SILICONE SEALANT TO BE USED AT INNER CORNERS & PERIMETERS. OUTSIDE CORNERS: SCHLUTER STRIP COLOR: LIGHT BEIGE	GC
P5	PAINT	BENJAMIN MOORE	RASSAN TORTE #0038-10	SEMI-GLOSS	RESTROOM WALLS. GROUT: LATICRETE SPECTRALOCK PRO PREMIUM EPOXY (SAND) COLOR: #40 LATTICE LATICRETE LATASS. SILICONE SEALANT TO BE USED AT INNER CORNERS & PERIMETERS. OUTSIDE CORNERS: SCHLUTER STRIP COLOR: LIGHT BEIGE	GC
P6	PAINT	BENJAMIN MOORE	MUSLIN #1037	SEMI-GLOSS	RESTROOM WALLS. GROUT: LATICRETE SPECTRALOCK PRO PREMIUM EPOXY (SAND) COLOR: #40 LATTICE LATICRETE LATASS. SILICONE SEALANT TO BE USED AT INNER CORNERS & PERIMETERS. OUTSIDE CORNERS: SCHLUTER STRIP COLOR: LIGHT BEIGE	GC
P7	PAINT	BENJAMIN MOORE	STORM GRAY #9F-120	SEMI-GLOSS	RESTROOM WALLS. GROUT: LATICRETE SPECTRALOCK PRO PREMIUM EPOXY (SAND) COLOR: #40 LATTICE LATICRETE LATASS. SILICONE SEALANT TO BE USED AT INNER CORNERS & PERIMETERS. OUTSIDE CORNERS: SCHLUTER STRIP COLOR: LIGHT BEIGE	GC
P8	PAINT	BENJAMIN MOORE	PLATINUM GRAY #MC-179	SEMI-GLOSS	RESTROOM WALLS. GROUT: LATICRETE SPECTRALOCK PRO PREMIUM EPOXY (SAND) COLOR: #40 LATTICE LATICRETE LATASS. SILICONE SEALANT TO BE USED AT INNER CORNERS & PERIMETERS. OUTSIDE CORNERS: SCHLUTER STRIP COLOR: LIGHT BEIGE	GC
PL-1	PLASTIC LAMINATE	WILSON ART	7899R-18 STUJOK STEAK	4"	RESTROOM WALLS. GROUT: LATICRETE SPECTRALOCK PRO PREMIUM EPOXY (SAND) COLOR: #40 LATTICE LATICRETE LATASS. SILICONE SEALANT TO BE USED AT INNER CORNERS & PERIMETERS. OUTSIDE CORNERS: SCHLUTER STRIP COLOR: LIGHT BEIGE	CABINET
RB1	WALL BASE	JOHNSONITE	RUBBER BASE (COVERED, BLACK 4)	4"	RESTROOM WALLS. GROUT: LATICRETE SPECTRALOCK PRO PREMIUM EPOXY (SAND) COLOR: #40 LATTICE LATICRETE LATASS. SILICONE SEALANT TO BE USED AT INNER CORNERS & PERIMETERS. OUTSIDE CORNERS: SCHLUTER STRIP COLOR: LIGHT BEIGE	HJC
RB3	FRP BASE	MARLITE	BLACK	SEE SPEC	RESTROOM WALLS. GROUT: LATICRETE SPECTRALOCK PRO PREMIUM EPOXY (SAND) COLOR: #40 LATTICE LATICRETE LATASS. SILICONE SEALANT TO BE USED AT INNER CORNERS & PERIMETERS. OUTSIDE CORNERS: SCHLUTER STRIP COLOR: LIGHT BEIGE	HJC
RB5	COVE BASE	SCHLUTER SYSTEMS	DILEX-ALPHA BASE SATIN ANODIZED ALUMINUM	SEE SPEC	RESTROOM WALLS. GROUT: LATICRETE SPECTRALOCK PRO PREMIUM EPOXY (SAND) COLOR: #40 LATTICE LATICRETE LATASS. SILICONE SEALANT TO BE USED AT INNER CORNERS & PERIMETERS. OUTSIDE CORNERS: SCHLUTER STRIP COLOR: LIGHT BEIGE	HJC
S2	SOLID SURFACE COUNTERTOP	DUPONT CORIAN	COTTAGE LAKE	SEE SPEC	RESTROOM WALLS. GROUT: LATICRETE SPECTRALOCK PRO PREMIUM EPOXY (SAND) COLOR: #40 LATTICE LATICRETE LATASS. SILICONE SEALANT TO BE USED AT INNER CORNERS & PERIMETERS. OUTSIDE CORNERS: SCHLUTER STRIP COLOR: LIGHT BEIGE	CABINET
FT	TERRAZZO	SEE SPEC	COLOR	1/2" THICK	RESTROOM WALLS. GROUT: LATICRETE SPECTRALOCK PRO PREMIUM EPOXY (SAND) COLOR: #40 LATTICE LATICRETE LATASS. SILICONE SEALANT TO BE USED AT INNER CORNERS & PERIMETERS. OUTSIDE CORNERS: SCHLUTER STRIP COLOR: LIGHT BEIGE	HJC
VF1	VINYL FLOORING	SHAW	STYLISH QUARTZ COVER #919V	1/2" THICK	RESTROOM WALLS. GROUT: LATICRETE SPECTRALOCK PRO PREMIUM EPOXY (SAND) COLOR: #40 LATTICE LATICRETE LATASS. SILICONE SEALANT TO BE USED AT INNER CORNERS & PERIMETERS. OUTSIDE CORNERS: SCHLUTER STRIP COLOR: LIGHT BEIGE	HJC
WC1	WALL UNDERLAY	ETEKON	W/16A YELLOW	PRO-FIT LEDGESTONE	RESTROOM WALLS. GROUT: LATICRETE SPECTRALOCK PRO PREMIUM EPOXY (SAND) COLOR: #40 LATTICE LATICRETE LATASS. SILICONE SEALANT TO BE USED AT INNER CORNERS & PERIMETERS. OUTSIDE CORNERS: SCHLUTER STRIP COLOR: LIGHT BEIGE	HJC
WC1	MANUFACTURED STONE VENEER	BORAL STONE	SOUTHWEST BLEND	PRO-FIT LEDGESTONE	RESTROOM WALLS. GROUT: LATICRETE SPECTRALOCK PRO PREMIUM EPOXY (SAND) COLOR: #40 LATTICE LATICRETE LATASS. SILICONE SEALANT TO BE USED AT INNER CORNERS & PERIMETERS. OUTSIDE CORNERS: SCHLUTER STRIP COLOR: LIGHT BEIGE	HJC
WT-1	CLEAR FINE	PAINTED P-1			RESTROOM WALLS. GROUT: LATICRETE SPECTRALOCK PRO PREMIUM EPOXY (SAND) COLOR: #40 LATTICE LATICRETE LATASS. SILICONE SEALANT TO BE USED AT INNER CORNERS & PERIMETERS. OUTSIDE CORNERS: SCHLUTER STRIP COLOR: LIGHT BEIGE	GC



4 INTERIOR RETAIL ELEVATION

Order Plans @

NOTE:
 1. ALL TILE, GROUT AND SILICONE SEALANT FOR FRP AND TILED AREAS TO BE SUPPLIED BY WAWA VENDOR AND INSTALLED BY GC. ALL MASTIC AND THIN SET MORTAR TO BE SUPPLIED AND INSTALLED BY GC.
 2. ALL FINISHES INSTALLED BY GENERAL CONTRACTOR UNLESS NOTED OTHERWISE.