

GENERAL NOTES

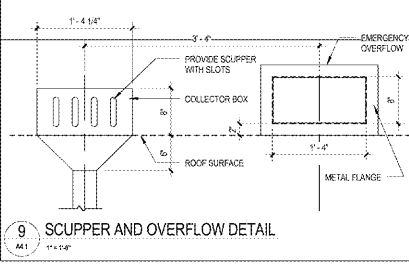
- ALL BLOCKING @ HARDSIDE FOR LIGHTS, SECURITY ITEMS. SEE DETAIL 10A7.
- MOUNT SECURITY CAMERAS THE SAME HEIGHT AS THE EXTERIOR WALL FIXTURE.
- PROVIDE 1/2" X 1/2" ELECTRICAL BOX STONE TRIM BY BOLLARD GREEK. COLOR ANTIQUE TAN AT ALL EXTERIOR ELECTRICAL RECEPTACLES MOUNTED ON STONE. SEE DETAIL 8A4.
- PETERSEN PAC CLAD IS AN ACCEPTABLE ALTERNATE MFR FOR PRODUCTS WHERE "ATAS" IS SPECIFIED. PROVIDE EQUAL OR BETTER QUALITY PRODUCTS. SUBMIT PRODUCT DATA TO ARCHITECT FOR APPROVAL.

ARCHITECTURAL - EXTERIOR FINISH SCHEDULE

| SYMBOL | MATERIAL | MANUFACTURER | COLOR | NOTES |
|--------|--|-------------------------|---|--|
| CS2 | COX FILL BOX WITH PVC SLEEVE THRU WALL | | | SEE A1 FOR LOCATION AND ACCOUNTING DETAIL 18A7 (28A1) |
| DS | STAINLESS STEEL 1/8" WALL SOLIDPIPE & COLLECTOR AND 4" DIA. STAINLESS STEEL DOWNPOUT | ATAS INTERNATIONAL INC. | NATURAL MILL FINISH | COORDINATE WITH CHL FOR CONNECTION TO STORM SEWER. SEE DETAIL 14A & 14A7. ALTERNATE: PETERSEN PAC CLAD |
| DS1 | 4" DIA. STAINLESS STEEL DOWNPOUT REFER TO SPECS FOR GAUGE | ATAS INTERNATIONAL INC. | NATURAL MILL FINISH | COORDINATE WITH CHL FOR CONNECTION TO STORM SEWER. SEE DETAIL 14A & 14A7. ALTERNATE: PETERSEN PAC CLAD |
| DS2 | 4" DIA. ALUM. DOWNPOUT | ATAS INTERNATIONAL INC. | 035 POLISHED ALUMINUM 16' OLEAF ANODIZED FINISH | ALTERNATE: PETERSEN PAC CLAD |
| EP1 | PAINT | BENJAMIN MOORE | COLOR: WHITE DAMASK 212-99 FINISH: EGGSHELL | |
| EP6 | PAINT | BENJAMIN MOORE | COLOR: WESTMINSTER GOLD 4293 FINISH: SEMI-GLOSS | TO BE DETERMINED. FINISH: SMOOTH 8.25' X 12' |
| FCS | "ARTISAN" PLANK LAP SIDING | JAMES HARDIE | ARTIC WHITE, FINISH: SMOOTH 1.5 TH X 16' W X 10' L | PRE-FINISHED. PROVIDE COLOR-MATCHED CAULK BY JAMES HARDIE |
| FCST | "ARTISAN" ACCENT TRIM | JAMES HARDIE | ARTIC WHITE, FINISH: SMOOTH 1.5 TH X 16' W X 10' L | CONTINUOUS, NO SEAMS ALLOWED. SEE SHEET A3.1 |
| G1 | ALUMINUM GLITTERS | | 035 POLISHED ALUMINUM 16' OLEAF ANODIZED FINISH | SEE A3.1 FOR DETAILS |
| ICE | ICE MESH-HANDISER | LEER | BRUSHED ALUMINUM/ MILL FINISH | |
| LADD | METAL EXTERIOR LADDER | EASTERN METAL SUPPLY | BRUSHED ALUMINUM/ MILL FINISH | |
| LGD | "LADDER" GUARD RAILS | VISIONMASTERS EQUIP. | | |
| LIGHT | EXTERIOR LIGHT FIXTURE | | | SEE ELECTRICAL DRAWINGS AND DETAIL 18A7 FOR MOUNTING |
| MTPN | METAL PANEL | CFL ARCHITECTURAL, LLC | COLOR TO MATCH ADJACENT TRIM | BAHAMA SHUTTERS ASSEMBLY. CONTACT (407) 408-9987 |
| MTPN1 | METAL PANEL | CFL ARCHITECTURAL, LLC | PAINT TO MATCH DOORS, EPI | PANEL ABOVE DOOR. CONTACT (407) 408-9987 |
| OF5 | STAINLESS STEEL 8" X 16" OVERFLOW | ATAS INTERNATIONAL INC. | NATURAL MILL FINISH | ALTERNATE: PETERSEN PAC CLAD |
| OS1 | SCUPPER | ATAS INTERNATIONAL INC. | RAPID-LOCK FASCOA & RAPID-LOCK COPINGS COLOR: #17 BRUTE RED | SEE A3.1 FOR DETAILS. ALTERNATE: PETERSEN PAC CLAD |
| OVH2 | METAL OVERHANG FACING | ATAS INTERNATIONAL INC. | BRAKE METAL COLOR #26 BONE WHITE | SEE A3.1 FOR DETAILS. ALTERNATE: PETERSEN PAC CLAD |
| PAR | HP ROOF FASCOA | ATAS INTERNATIONAL INC. | ALUMINUM PARAPET CAP | ALTERNATE: PETERSEN PAC CLAD |
| PBS | PRE-FINISHED ALUMINUM BAHAMA SHUTTER | CFL ARCHITECTURAL, LLC | COLOR TO MATCH ADJACENT TRIM | SHUTTER PER SPECS. CONTACT (407) 408-9987 |

ARCHITECTURAL - EXTERIOR FINISH SCHEDULE

| SYMBOL | MATERIAL | MANUFACTURER | COLOR | NOTES |
|--------|--|-------------------------|---|---|
| PVCT | ACCENT TRIM | AZER | WHITE FINISH SMOOTH SEE DRAWINGS FOR DIMENSIONS | PRE-FINISHED. ALTERNATE: PA LIGHT |
| RF2 | METAL ROOFING | ATAS INTERNATIONAL INC. | ARROW DUTCH SEAL (1.12) 16.5" COLOR: 803 COPPERTONE | ALTERNATE: PETERSEN PAC CLAD |
| RS1P | STANDING SEAM ROOF HP CAP | ATAS INTERNATIONAL INC. | TO MATCH METAL ROOFING | ALTERNATE: PETERSEN PAC CLAD |
| RS2P | ROOF SUPPORT & PLATE | | POWDER COAT, MATCH SW #676 | SEE STRUCTURAL. ALL ROOF NOT INDICATED ON STRUCTURAL ARE PURELY DECORATIVE RE: 21A13 1" W SHARPEL ACCORDING TO SPECS |
| SC1 | STUCCO CONTROL JOINT - 3/4" WIDE | | | SEEN BY WAWA. SURFACE MOUNTED |
| SKN | ILLUMINATED SIGNAGE | | | BUILDING OVERHANGS. ALTERNATE: PETERSEN PAC CLAD |
| SOFF | 3/8" X 1/2" SOLID AND VENTED | ATAS INTERNATIONAL INC. | BONE WHITE | FRIT TO BE ON INSIDE OF PANEL |
| SPAN | "SPANGLES" GLASS 1/2" INSULATED TEMPERED | VERSION | SOUTHWEST BLEND PR-8012. PRODUCT LEGGESTONE | |
| STN1 | MANUFACTURED STONE VENEER | SORCAL | TAURE CSV-1375 | VERTICAL GROUT JOINTS: 3/16" MAX WIDTH. GROUT WITH BONSAL #11 WARM IVORY |
| STN2 | PRE-CAST MANUFACTURED STONE | SORCAL | TAURE CSV-1375 | SEE DETAIL 18.1 FINISH ALTERNATE: QUALITY STONE VENEER, INC. SEE SPECIFICATIONS. VERTICAL GROUT JOINTS: 3/16" MAX WIDTH. GROUT WITH BONSAL #11 WARM IVORY |
| STN5 | PRE-CAST STONE BASE | ITALIAN CAST STONE | ITALIAN CAST STONE | SEE SHEET A10. GROUT JOINTS 3/16" MAX WIDTH. COLOR: WHITE TO MATCH STONE CAP |
| STR | PRE-CAST STONE CAP | ITALIAN CAST STONE | ITALIAN CAST STONE | SEE SHEET A10. GROUT JOINTS 3/16" MAX WIDTH. COLOR: WHITE TO MATCH STONE CAP |
| STU1 | STUCCO | NAHRESER | CLEAR ANODIZED | SEE SPECIFICATIONS |
| STU2 | STUCCO | SENERGY | 48055 MERRICKLE FINISH SAHARA | SEE SPECIFICATIONS |
| TG | 1" INSULATED TEMPERED GLASS | SENERGY | 8554 STARK WHITE FINISH FINE | SEE SPECIFICATIONS |
| TOT | 1" INSULATED TEMPERED GLASS | VITRO ARCHITECTURE | GRANITE II. SEE SPECS | SEE SPECIFICATIONS |
| TH | 36" X 48" ACCESS HATCH | GLASS | FACTORY FINISH | REFER TO DOOR SCHEDULE SHEET A1 |



Order Plans @ WAWA.COM