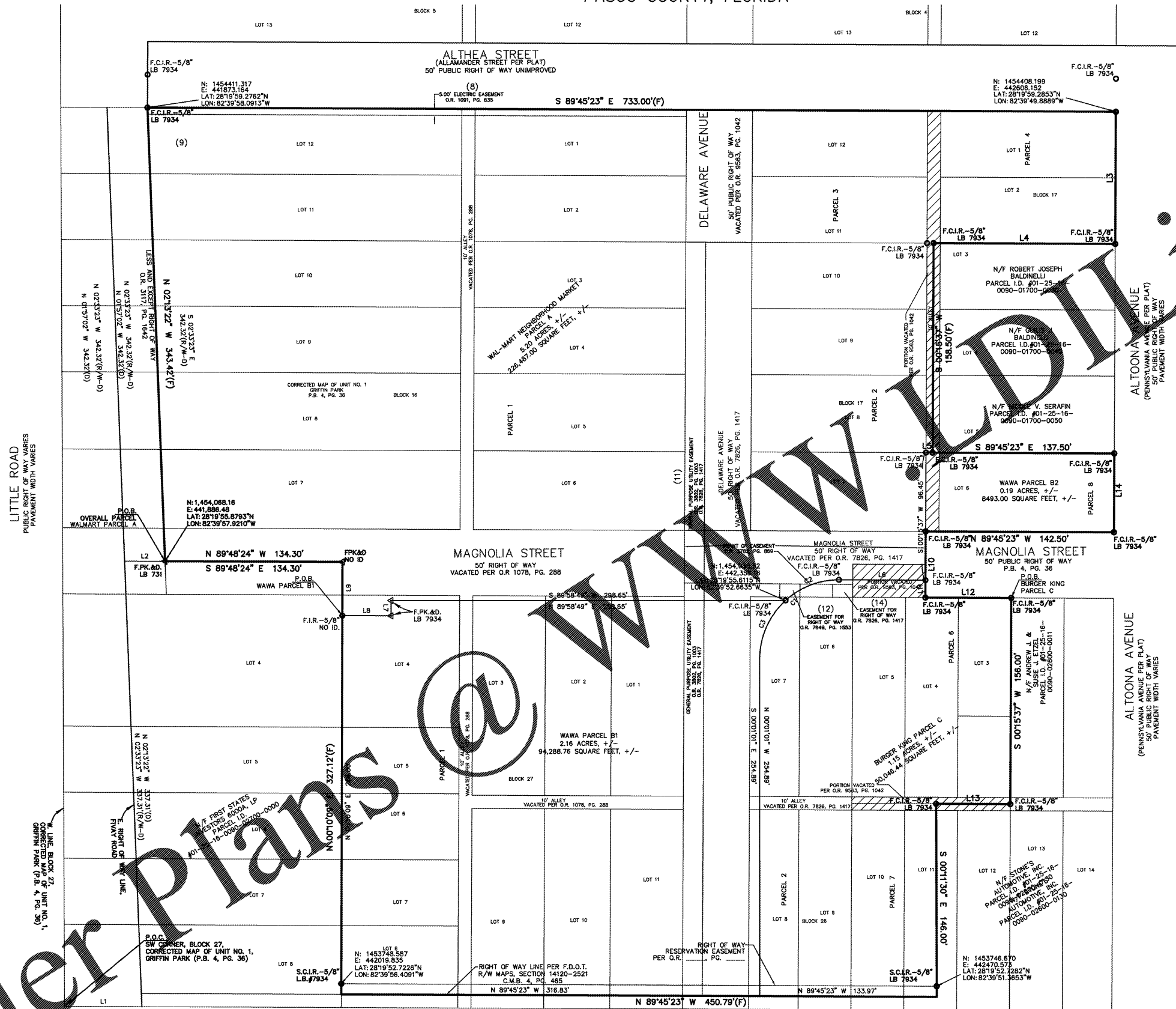
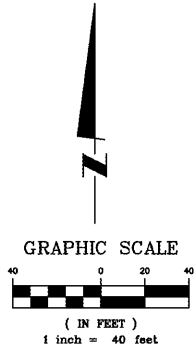


SECTION 1, TOWNSHIP 25 SOUTH, RANGE 16 EAST  
PASCO COUNTY, FLORIDA



- LEGEND**
- FOUND IRON PIPE F.C.M.
  - SET CORNER AS NOTED F.C.I.R.
  - △ FOUND P.K. NAIL & DISK F.P.K.N.A.D.
  - ⊕ WOOD COMBO POLE (F)
  - ⊕ WOOD POWER POLE (D)
  - ⊕ CONC. LIGHT POLE (F/M-D)
  - ⊕ GUY ANCHOR L.B.
  - ⊕ TRAFFIC SIGNAL PULL BOX PSM
  - ⊕ MAST ARM POLE O.R.
  - ⊕ PEDESTRIAN POLE P.B.
  - ⊕ BOLLARD SAN
  - ⊕ SIGN TOB
  - ⊕ CONCRETE WHEEL STOP (TOS)
  - ⊕ UNDERGROUND GAS MARKER EP
  - ⊕ GAS VALVE BOC
  - ⊕ WATER VALVE BLDG
  - ⊕ SPRING WELL FFE
  - ⊕ WATER METER W.D.F.
  - ⊕ BACK FLOW PREVENTOR C.L.F.
  - ⊕ FIRE HYDRANT P.V.C.F.
  - ⊕ IRRIGATION WELL R/W
  - ⊕ DRAINAGE MANHOLE (TYP.)
  - ⊕ SANITARY MANHOLE
  - ⊕ PHONE SPICE BOX
  - ⊕ FIBER OPTIC LINE MARKER
  - ⊕ FIBER OPTIC BOX
  - ⊕ TELEPHONE MANHOLE
  - ⊕ OAK TREE
  - ⊕ PALM TREE
  - ⊕ MAPLE TREE

- ADJOINING PARCEL/ PLAT LINES
- EASEMENT LIMITS
- ELECTRIC LINE
- CABLE TELEVISION LINE
- FIBER OPTIC LINE
- SANITARY FORCEMAIN
- GAS LINE
- OVERHEAD WIRE
- SANITARY SEWER LINE
- STORM LINE
- FENCE LINE

**LINE TABLE**

LINE	BEARING	DISTANCE
L1	S 89°45'23" E	58.53'
L2	S 89°45'23" E	30.83'
L3	S 00°15'37" W	100.00'
L4	N 89°45'23" W	137.50'
L5	N 89°45'23" W	5.00'
L6	N 89°44'23" E	65.50'
L6BK	S 89°44'23" E	65.50'
L7	S 00°11'11" E	11.50'
L8	N 89°44'22" W	36.86'
L9	N 00°10'09" E	40.62'
L7WA	N 00°11'11" W	11.50'
L6WA	S 89°44'22" E	36.86'
L9WA	S 00°10'09" W	40.62'
L10	S 00°15'37" W	50.00'
L11	S 00°15'37" W	13.18'
L12	S 89°45'23" E	65.00'
L13	N 89°45'23" W	56.16'
L14	S 00°15'37" W	59.60'

**CURVE TABLE**

CURVE	LENGTH	RADIUS	DELTA	CHORD BEARING	CHORD
C1	94.25'	60.00'	90°00'11"	N 45°58'44" E	84.66'
C2	44.30'	60.00'	42°18'17"	S 68°49'41" W	43.30'
C3	49.95'	60.00'	47°41'54"	S 23°49'35" E	48.52'

**REVISIONS**

No.	DESCRIPTIONS	DATE	BY
1	PERMIT REVIEW UPDATES	2/09/17	DFF
2	BOUNDARY LINE	2/16/17	DFF
3	ROW LINE	3/30/17	DFF
4	TITLE COMMITMENT UPDATES	4/04/17	DFF
5	NEW RIGHT OF WAY LINE	6/06/17	DFF

ALTA/ ACSM LAND TITLE SURVEY  
STATE ROAD 52 AND LITTLE ROAD  
HUDSON  
PASCO COUNTY, FLORIDA

**JMPACT** SURVEYING AND MAPPING, INC.  
L.B. #7934  
7815 NORTH DALE MABRY HIGHWAY, SUITE 107, TAMPA, FL. 33614  
Phone: (813) 644-6570  
E-Mail: psm5931@msn.com  
www.impactsurveyingandmapping.com

STATE ROAD 52  
PUBLIC RIGHT OF WAY VARIES  
ASPHALT PAVEMENT WIDTH VARIES

DRAWN BY:  
R. KIRCHNER  
CHECKED BY:  
D. PEACH  
SCALE:  
1"=40'

RELEASE DATE:  
01/18/2017  
PARTY CHIEF:  
R. KIRCHNER  
FIELD BOOK: 9  
PAGE: 68

CAD FILE:  
WALMART.DWG  
JOB NUMBER:  
2015-49  
SHEET  
2 of 4