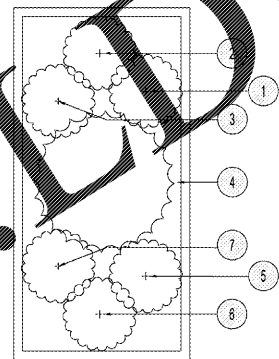


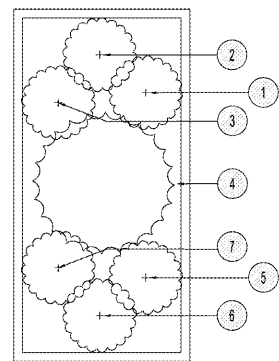
- SOUTH FLORIDA WARM SEASON PALETTE**
1. RED SALVIA
  2. PINK PORTULACA
  3. YELLOW ZINNIA
  4. DWARF WHITE FOUNTAIN GRASS
  5. WHITE PENTAS
  6. ORANGE GAZANIA
  7. PINK PORTULACA
- SOUTH FLORIDA COOL SEASON PALETTE**
1. POT MARIGOLD
  2. PINK PENTUNA
  3. WHITE ALYSSUM
  4. DWARF WHITE FOUNTAIN GRASS
  5. ORANGE ZINNIA
  6. RED PORTULACA
  7. PINK VERBENA
- NOTE: ALL PLANT MATERIAL TO BE ON GALLON POT, SEE MATERIALS SCHEDULE FOR MULCH.
- POT SPECIFICATION**
- NAME: BOULEVARD SERIES PLANTER  
MANUFACTURER: ALLIED MOLDED PRODUCTS, LLC.  
MODEL NO.: IRECLP-482424  
SIZE: 48" L X 24" W X 24" H  
COLOR: BENJAMIN MOOR #0C-1 NATURAL WICKER

1 PLANTER 'A' ENLARGEMENT  
SCALE: NTS



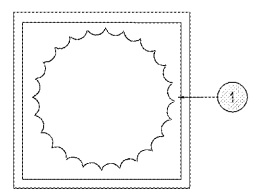
- SOUTH FLORIDA WARM SEASON PALETTE**
1. PINK GAZANIA
  2. YELLOW PURSLANE
  3. ORANGE PLUME CELOSIA
  4. DWARF WHITE FOUNTAIN GRASS
  5. WHITE SALVIA
  6. PINK GAZANIA
  7. RED DIANTHUS
- SOUTH FLORIDA COOL SEASON PALETTE**
1. RED SALVIA
  2. WHITE PETUNIA
  3. YELLOW ALYSSUM
  4. DWARF WHITE FOUNTAIN GRASS
  5. BLUE DAZE
  6. LAVENDER VERBENA
  7. YELLOW TALL MARIGOLD
- NOTE: ALL PLANT MATERIAL TO BE ON GALLON POT, SEE MATERIALS SCHEDULE FOR MULCH.
- POT SPECIFICATION**
- NAME: BOULEVARD SERIES PLANTER  
MANUFACTURER: ALLIED MOLDED PRODUCTS, LLC.  
MODEL NO.: IRECLP-482424  
SIZE: 48" L X 24" W X 24" H  
COLOR: BENJAMIN MOOR #0C-1 NATURAL WICKER

2 PLANTER 'B' ENLARGEMENT  
SCALE: NTS



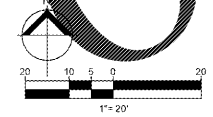
- SOUTH FLORIDA WARM SEASON PALETTE**
1. TALL PINK ZINNIA
  2. ORANGE PLUME CELOSIA
  3. YELLOW DAHLBER DAISY
  4. DWARF WHITE FOUNTAIN GRASS
  5. RED PENTAS
  6. PINK PORTULACA
  7. WHITE BEGONIA
- SOUTH FLORIDA COOL SEASON PALETTE**
1. BLUE DAZE
  2. RED PETUNIA
  3. YELLOW ALYSSUM
  4. DWARF WHITE FOUNTAIN GRASS
  5. PINK DIANTHUS
  6. WHITE VERBENA
  7. YELLOW PLUME CELOSIA
- NOTE: ALL PLANT MATERIAL TO BE ON GALLON POT, SEE MATERIALS SCHEDULE FOR MULCH.
- POT SPECIFICATION**
- NAME: BOULEVARD SERIES PLANTER  
MANUFACTURER: ALLIED MOLDED PRODUCTS, LLC.  
MODEL NO.: IRECLP-482424  
SIZE: 48" L X 24" W X 24" H  
COLOR: BENJAMIN MOOR #0C-1 NATURAL WICKER

3 PLANTER 'C' ENLARGEMENT  
SCALE: NTS



- SOUTH FLORIDA WARM & COOL SEASON PALETTE**
1. DWARF WHITE FOUNTAIN GRASS
- NOTE: ALL PLANT MATERIAL TO BE ON GALLON POT, SEE MATERIALS SCHEDULE FOR MULCH.
- POT SPECIFICATION**
- NAME: BOULEVARD SERIES PLANTER  
MANUFACTURER: ALLIED MOLDED PRODUCTS, LLC.  
MODEL NO.: 151P-2425  
SIZE: 24" X 24"  
COLOR: BENJAMIN MOOR #0C-1 NATURAL WICKER

4 PLANTER 'D' ENLARGEMENT  
SCALE: NTS



**BOHLER ENGINEERING**

SITE CIVIL AND CONSTRUCTION PLANNING  
LAND SURVEYING, DESIGN, HYDRAULIC DESIGN, AND EROSION CONTROL  
SUSTAINABLE DESIGN, HYDRAULIC DESIGN, AND EROSION CONTROL

OFFICES:  
 TAMPA, FL • MIAMI, FL • JACKSONVILLE, FL  
 NORTHERN VIRGINIA  
 CENTRAL VIRGINIA  
 CHARLOTTE, NC  
 CHARLOTTE, NC  
 TAMPA, FL  
 TAMPA, FL  
 TAMPA, FL  
 TAMPA, FL  
 TAMPA, FL  
 TAMPA, FL

REVISIONS				
REV	DATE	COMMENT	BY	
1	6/9/17	PER COUNTY COMMENTS	KS	
2	7/26/17	PER COMMENTS	KS	
3	09/09/17	PER COUNTY COMMENTS	KS	

**811**

KNOW WHAT'S BELOW  
ALWAYS CALL 811  
BEFORE YOU DIG

It's fast. It's free. It's the law.

NOT APPROVED FOR CONSTRUCTION

PROJECT NO:	FL160076
DRAWN BY:	KS
CHECKED BY:	KS
DATE:	11/03/2016
SCALE:	1" = 20'
CAD ID:	LP1

PROJECT: **SITE CONSTRUCTION PLANS** FOR **RMC PROPERTY GROUP**

LOCATION OF SITE  
SR 52 & LITTLE RD  
HUDSON, FLORIDA  
PASCO COUNTY

**BOHLER ENGINEERING**

3820 NORTHALE BLVD., SUITE 300B  
TAMPA, FLORIDA 33624  
Phone: (813) 912-4100  
Fax: (813) 912-4101  
FLORIDA BUSINESS TORT OF A&P: No. 9076  
LICENSED PROFESSIONAL ENGINEER, No. 10788

REGISTERED LANDSCAPE ARCHITECT  
STATE OF FLORIDA  
LA 1866899

SHEET TITLE:  
**WAWA PLANTING PLAN**

SHEET NUMBER:  
**LP-4.01**