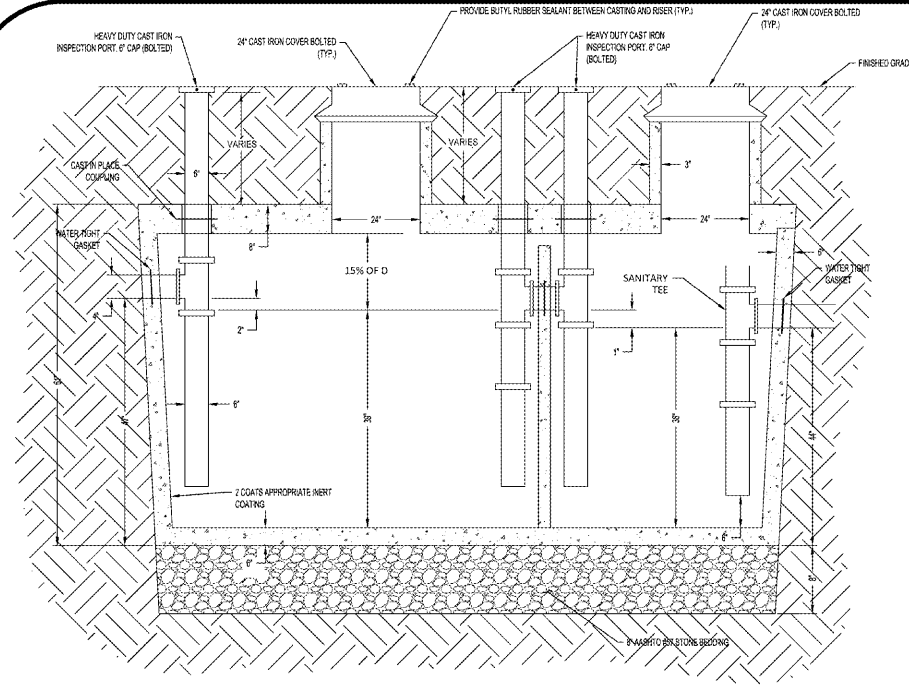


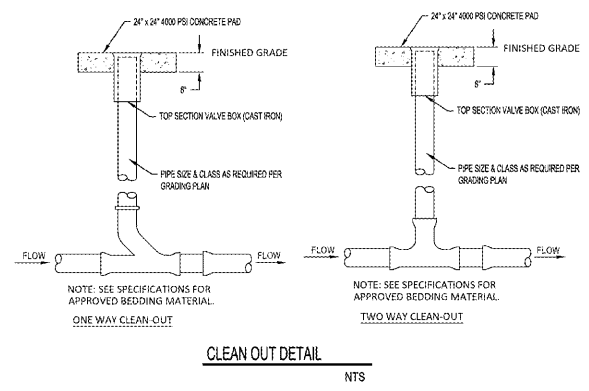
# WAWA UTILITY DETAILS

REV. JULY 28, 2016

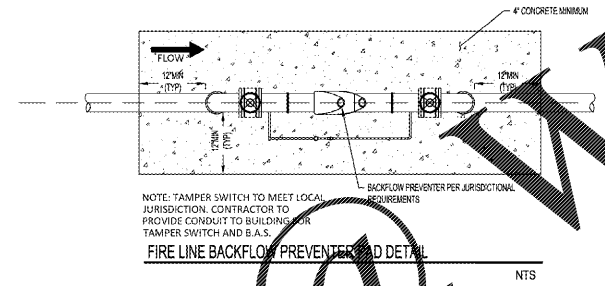


NOTE: 1250 GALLON (2 COMPARTMENT) TANK  
**GREASE TRAP DETAIL**  
NTS

- ALL INLET AND OUTLET PIPES SHALL BE INSTALLED NO MORE THAN 6" FROM THE BOTTOM OF THE GREASE TRAP. TANK TAPERS TOP TO BOTTOM AND IS TRAPEZOIDAL IN CROSS SECTION. TANK IS 5000 PSI CONCRETE STEEL REINFORCED (@ 28 DAYS) CONCRETE CONFORMS TO ACI 318-16 4.5.1 AND 318-16 4.5.2, ASTM A615 AND A185
- DIMENSION: 107" INTERIOR/ 117" EXTERIOR LENGTH x 52" INTERIOR/ 62" EXTERIOR WIDTH
- NOTES:
- 1) WHEN LOCATED IN DRIVEWAYS OR PAVED AREAS, GREASE TRAP TO BE DESIGNED FOR APPROPRIATE LOAD BEARING CONDITIONS. GREASE TRAP SHALL BE CAPABLE OF WITHSTANDING HS-20 LOADING.
  - 2) ALL PIPE PENETRATIONS SHALL BE WATER TIGHT.
  - 3) GREASE TRAP SHALL BE PROVIDED WITH GAS-TIGHT MANHOLE COVERS, IN ACCORDANCE WITH TOWNSHIP STANDARD SPECIFICATIONS.
  - 4) PRECAST CONCRETE SHALL HAVE A MINIMUM 28-DAY COMPRESSIVE STRENGTH 5000 PSI.
  - 5) EXTERIOR CONCRETE SURFACES BELOW GRADE SHALL HAVE 2 COATS OF COAL TAR EPOXY.
  - 6) SPECIFIC SEALANT DETAIL AT CONCRETE RISER TO CONCRETE VAULT INTERFACE SHALL BE WATER TIGHT. AT A MINIMUM, THE JOINT SHALL BE SEALED WITH BUTYL RUBBER SEALANT (KENT SEAL #2 OR APPROVED EQUIVALENT) AND THE EXTERIOR OF THE JOINT SHALL BE SEALED WITH NON-SHRINK GROUT IN CONFORMANCE WITH THE TOWNSHIP STANDARD GREASE TRAP DETAIL.
  - 7) TANK SHALL BE TESTED FOR WATER TIGHTNESS BY FILLING FOR 24 HRS. TO SOAK, THEN TOPPED OFF, AND THEN WATCHED FOR 24 HRS. NO DROP IN WATER IS ALLOWED.
  - 8) CAST IRON SHALL BE BOLTED TO CONCRETE WITH MASTIC TAPE (KENT SEAL OR APPROVED EQUIVALENT) SEALANT.
  - 9) MAXIMUM EARTH COVER=5.0', HS-20 LOADING.
  - 10) INLET AND OUTLET EQUIPPED WITH PIPE SEALS.



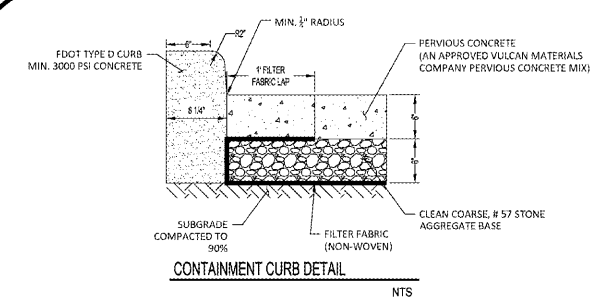
**CLEAN OUT DETAIL**  
NTS



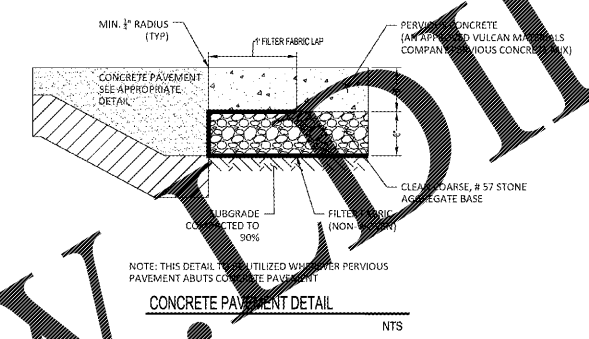
**FIRE LINE BACKFLOW PREVENTER DETAIL**  
NTS

# PERVIOUS PAVEMENT DETAILS

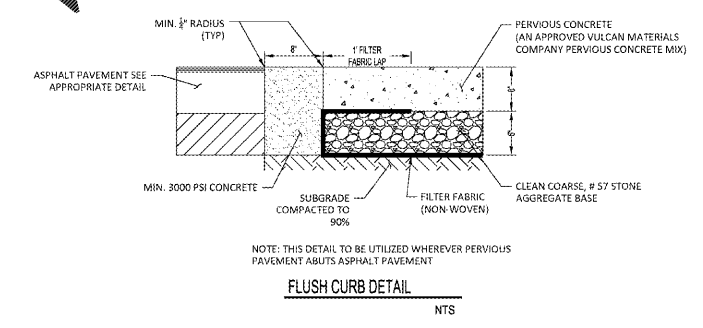
REV. JULY 28, 2016



**CONTAINMENT CURB DETAIL**  
NTS



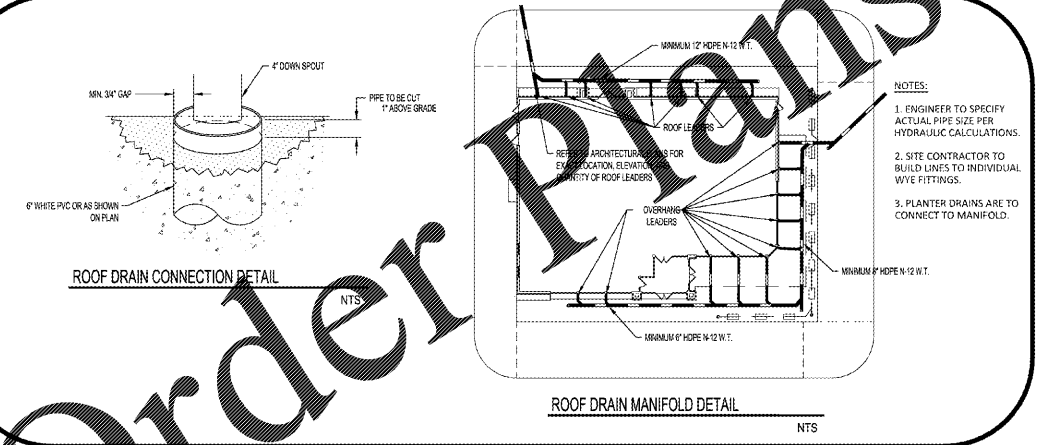
**CONCRETE PAVEMENT DETAIL**  
NTS



**FLUSH CURB DETAIL**  
NTS

# WAWA DRAINAGE DETAILS

REV. JULY 28, 2016



**ROOF DRAIN CONNECTION DETAIL**  
NTS

**ROOF DRAIN MANIFOLD DETAIL**  
NTS

- NOTES:
1. ENGINEER TO SPECIFY ACTUAL PIPE SIZE PER HYDRAULIC CALCULATIONS.
  2. SITE CONTRACTOR TO BUILD LINES TO INDIVIDUAL WYE FITTINGS.
  3. PLANTER DRAINS ARE TO CONNECT TO MANIFOLD.

**BOHLER ENGINEERING**  
 3820 NORTHALE BLVD., SUITE 300B  
 TAMPA, FLORIDA 33624  
 Phone: (813) 912-4100  
 Fax: (813) 912-4101  
 FLORIDA BUSINESS CERT. OF AUTH. NO. 39789  
 LICENSED PROFESSIONAL ENGINEER IN THE STATE OF FLORIDA

REGISTERED PROFESSIONAL ENGINEERS IN THE STATES OF:  
 ALABAMA, ARIZONA, ARKANSAS, CALIFORNIA, COLORADO, CONNECTICUT, DELAWARE, DISTRICT OF COLUMBIA, FLORIDA, GEORGIA, ILLINOIS, INDIANA, IOWA, KANSAS, KENTUCKY, LOUISIANA, MAINE, MARYLAND, MASSACHUSETTS, MICHIGAN, MINNESOTA, MISSISSIPPI, MISSOURI, MONTANA, NEBRASKA, NEVADA, NEW HAMPSHIRE, NEW JERSEY, NEW MEXICO, NEW YORK, NORTH CAROLINA, NORTH DAKOTA, OHIO, OKLAHOMA, PENNSYLVANIA, RHODE ISLAND, SOUTH CAROLINA, SOUTH DAKOTA, TENNESSEE, TEXAS, UTAH, VERMONT, VIRGINIA, WASHINGTON, WEST VIRGINIA, WISCONSIN, WYOMING

| REVISIONS |            |                                    |     |  |
|-----------|------------|------------------------------------|-----|--|
| REV       | DATE       | COMMENT                            | BY  |  |
| 2         | 2017-07-11 | PER COUNTY, SWYING & FOOT COMMENTS | JDP |  |
| 3         | 2017-10-13 | PER COUNTY COMMENTS                | JDP |  |
| 4         | 2017-10-27 | PER FOOT COMMENTS                  | JDP |  |
| 5         | 2017-11-30 | PER COUNTY UTILITY COMMENTS        | JDP |  |
| 6         | 2018-01-02 | PER COUNTY & FOOT COMMENTS         | JDP |  |
| 7         | 2018-01-25 | PER FOOT COMMENTS                  | JDP |  |
| 8         | 2018-02-06 | PER FOOT COMMENTS                  | JDP |  |
| 9         | 2018-04-05 | HYDRANT PER FIRE MARSHAL           | JDP |  |
| 10        | 2018-09-07 | WAWA BID SET                       | JDP |  |
| 11        | 2018-10-03 | PER ROW COMMENTS                   | SKK |  |

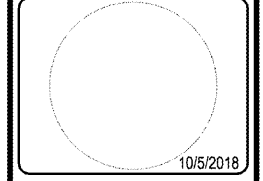
**811** KNOW WHAT'S BELOW  
 ALWAYS CALL 811  
 BEFORE YOU DIG  
 It's fast. It's free. It's the law.  
[www.callsunshine.com](http://www.callsunshine.com)

**PERMIT SET**

|             |            |
|-------------|------------|
| PROJECT NO: | FLT160078  |
| DRAWN BY:   | JDP        |
| CHECKED BY: | KSM        |
| DATE:       | 11/02/2016 |
| SCALE:      | N.T.S.     |
| CAD ID:     | SDO        |

PROJECT:  
**WAWA SR 52 & LITTLE RD**  
 FOR  
**RMC PROPERTY GROUP**  
 LOCATION OF SITE  
 9021 STATE ROAD 52  
 HUDSON, FLORIDA 34689  
 PASCO COUNTY

**BOHLER ENGINEERING**  
 3820 NORTHALE BLVD., SUITE 300B  
 TAMPA, FLORIDA 33624  
 Phone: (813) 912-4100  
 Fax: (813) 912-4101  
 FLORIDA BUSINESS CERT. OF AUTH. NO. 39789  
 LICENSED PROFESSIONAL ENGINEER IN THE STATE OF FLORIDA



SHEET TITLE:  
**WAWA STANDARD DETAILS**  
 SHEET NUMBER:  
**D-4**

Order Plans @ [www.WWW.com](http://www.WWW.com)