

PASCO COUNTY UTILITY NOTES:

- FIRE HYDRANTS SHALL BE FLOW-TESTED AND COLOR-CODED BASED ON FLOW RESULTS.
- ALL UTILITY SYSTEM-DESIGN MATERIALS AND WORKMANSHIP SHALL COMPLY WITH STANDARDS FOR DESIGN AND CONSTRUCTION OF WATER, WASTEWATER, AND RECLAIMED WATER FACILITIES SPECIFICATIONS, LATEST EDITION.
- CONNECTIONS INTO AN EXISTING COUNTY-OWNED SYSTEM SHALL BE VIA WET TAP. WET TAPS SHALL BE PERFORMED EXCLUSIVELY BY THE UTILITIES SERVICES BRANCH AT THE DEVELOPER'S EXPENSE. EXCAVATION, BACKFILL, AND SURFACE RESTORATION SHALL BE THE CONTRACTOR'S RESPONSIBILITY. MATERIAL FOR WET TAPS LARGER THAN TWO INCHES SHALL BE PROVIDED AND INSTALLED BY THE PROJECT CONTRACTOR.
- THE UTILITIES SERVICES BRANCH SHALL NOT OWN OR MAINTAIN ON-SITE WATER LINES, SEWER LINES, OR FACILITIES, UNLESS OTHERWISE APPROVED BY THE UTILITIES SERVICES BRANCH.
- CONTRACTOR'S RESPONSIBILITIES REGARDING WET TAPS TWO INCHES AND LARGER SHALL BE AS FOLLOWS:
 - 2" ONLY - THIS EXCAVATED TRENCH MUST BE DRY OR THE TRENCH WILL REQUIRE ROCK AND A PUMP TO BE IN PLACE. THE MINIMUM DISTANCE FROM THE FACE OF THE VALVE TO THE WALL OF THE TRENCH IS TO BE SIX FEET. THE COUNTY WILL PROVIDE THE TAPPING SADDLE, CORPORATION STOP, STAINLESS STEEL NIPPLE, AND IRON BODY VALVE.
 - 2" AND LARGER - THE CONTRACTOR WILL SUPPLY A TAPPING SADDLE BEING EPOXY COATED, A TAPPING VALVE WITH MECHANICAL JOINT AND THE EQUIPMENT TO PROVIDE, AND CONDUCT A PRESSURE TEST. COUNTY PERSONNEL WILL WITNESS THE PRESSURE TEST WHICH MUST BE AT 150 PSI FOR DURATION OF THIRTY MINUTES.
 - THE CONTRACTOR IS RESPONSIBLE FOR THE EXCAVATION BEFORE ANY COUNTY PERSONNEL WILL ENTER AN EXCAVATED AREA. IF THE TRENCH IS FOUR FEET IN DEPTH OR DEEPER, IT WILL REQUIRE A TRENCH BOX OR SLOPING, AND A LADDER ACCORDING TO OCCUPATIONAL SAFETY AND HEALTH ADMINISTRATION (OSHA) STANDARDS.
 - THE TAPPING VALVE WILL REQUIRE A BLOCKING DEVICE MADE OF SUITABLE MATERIAL OR WOOD. THIS BLOCKING DEVICE OR MATERIAL WILL BE PLACED UNDER THE VALVE AND REMAIN IN PLACE UNTIL THE TAP MACHINE IS REMOVED AND THE TAP IS COMPLETED.
 - NOTE: IF THE CONTRACTOR HAS NOT FULFILLED HIS RESPONSIBILITIES, AS STATED ABOVE, PRIOR TO THE ARRIVAL OF PASCO COUNTY UTILITIES OPERATIONS AND MAINTENANCE TAPPING CREW, THERE WILL BE AN ADDITIONAL CHARGE OF \$96.00.
- IF YOU HAVE ANY QUESTIONS REGARDING THIS INFORMATION, CONTACT NELSON D. HOLT, MAINTENANCE SUPERVISOR, UTILITIES SERVICES BRANCH, AT (813) 235-6189, OR E-MAIL: NHOLT@PASCOCOUNTYFL.GOV.
- CONTRACTOR MUST PROVIDE A DEWATERING PLAN, IF APPLICABLE, TO PASCO COUNTY ENGINEERING INSPECTIONS DEPARTMENT AT (727) 834-3670 FOR REVIEW PRIOR TO THE EROSION CONTROL MEASURES PRE-INSPECTION MEETING.
- THE PASCO COUNTY UTILITY PERMIT NUMBER ASSOCIATED WITH THIS PROJECT IS PCU17-103.33.

FIXTURE COUNTS

FIXTURES	FIXTURE VALUE @ 35 PSI	NO. OF FIXTURE	FIXTURE VALUE
DRINKING FOUNTAIN - COOLER	1	X	2
KITCHEN SINK 1/2" CONNECTION	3	X	6
KITCHEN SINK 3/4" CONNECTION	7	X	7
LAVATORY 3/8" CONNECTION	2	X	8
LAVATORY 1/2" CONNECTION	4	X	16
SERVICE SINK 3/4" CONNECTION	7	X	7
WALL FLUSH VALVE	10	X	20
WATER CLOSET FLUSH VALVE	10	X	30
HOSE 3/4" CONNECTION	10	X	30
COMBINED FIXTURE VALUE TOTAL			126
CUSTOMER PEAK DEMAND FROM CURVES			54 GPM
ENTER LINE PRESSURE AND PRESSURE FACTOR		35	1.38
CUSTOMER PEAK DEMAND FROM CURVES X PRESSURE FACTOR	54	X	75

WATER USAGE

POTABLE METER SIZE	1.5"
IRRIGATION PEAK FLOW DEMAND	WELL
IRRIGATION METER SIZE	WELL
FIRE FLOW DEMAND	1,500 GPM

SANITARY CLEANOUT SCHEDULE:

C.O.1 RIM ELEV = AT GRADE I.E. = 16.40	C.O.2 RIM ELEV = AT GRADE I.E. = 16.12	C.O.3 RIM ELEV = AT GRADE I.E. = 16.04	C.O.4 RIM ELEV = AT GRADE I.E. = 16.61
C.O.5 RIM ELEV = AT GRADE I.E. = 16.02	C.O.6 RIM ELEV = AT GRADE I.E. = 15.77	C.O.7 RIM ELEV = AT GRADE I.E. = 15.89	C.O.8 (2-WAY) RIM ELEV = AT GRADE I.E. = 15.63

UTILITY CROSSING SCHEDULE:

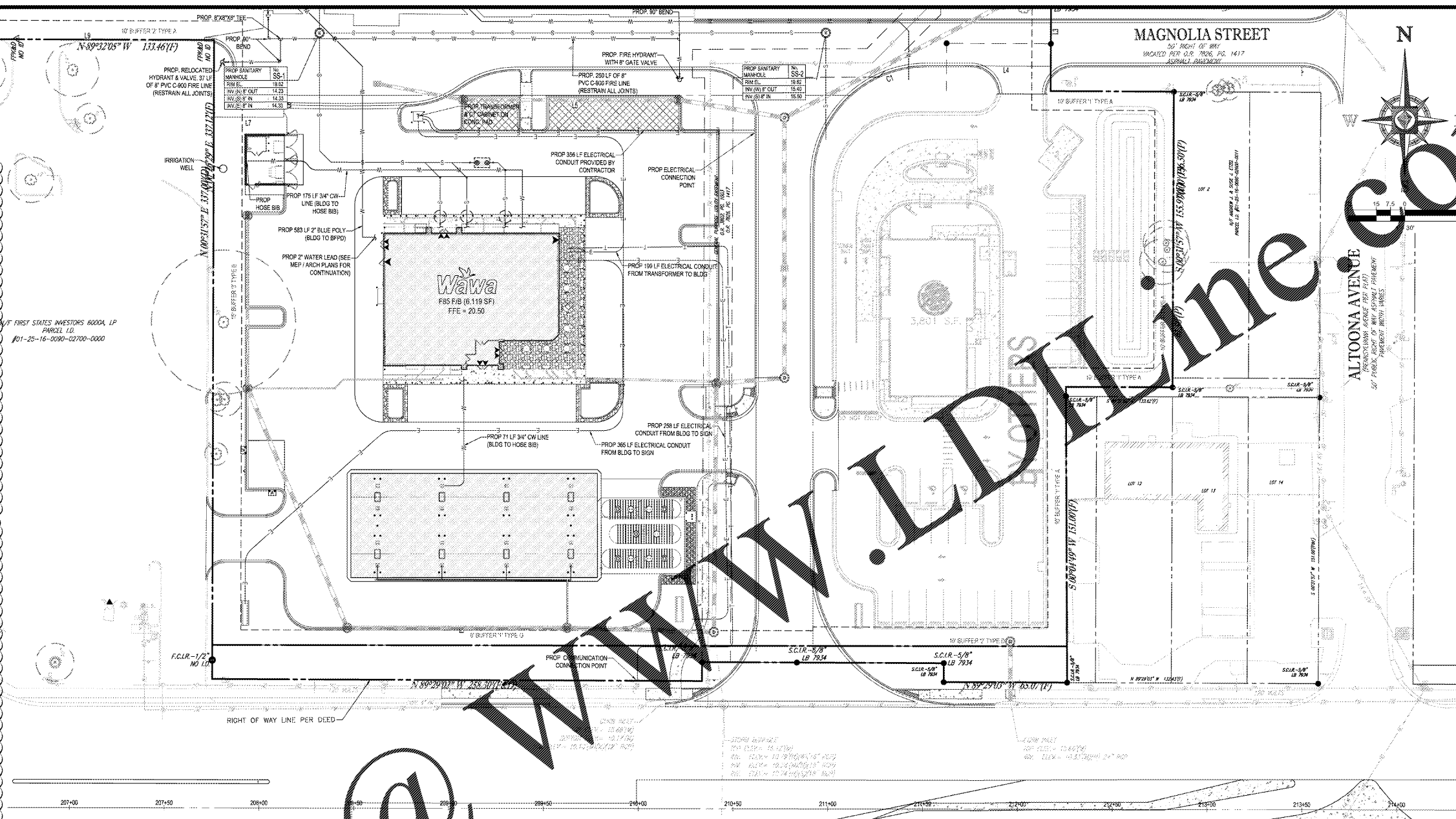
XING 1 TOP UTILITY: 8" STM STM BP ELEV = 17.47 BOTTOM UTILITY: 4" SAN SAN TIP ELEV = 16.19	XING 2 TOP UTILITY: 8" STM SAN BP ELEV = 17.33 BOTTOM UTILITY: 4" SAN STM TIP ELEV = 16.33
XING 3 TOP UTILITY: 8" STM SAN BP ELEV = 17.12 BOTTOM UTILITY: 6" SAN STM TIP ELEV = 16.89	

DEWATERING NOTE:

CONTRACTOR SHALL SUBMIT DEWATERING PLAN TO THE DISTRICT 7 DAYS PRIOR TO COMMENCEMENT. SUBMITTALS SHALL BE REVISABLE.

WATER DISTRIBUTION NOTES:

- CONTRACTOR SHALL FOLLOW GUIDELINES AND PROCEDURES OUTLINED BY UTILITY PERMITS AND HAVE UTILITY PROVIDER'S MANUAL ON-SITE AT ALL TIMES. THIS POLICY MANUAL SHALL BE CONSIDERED PART OF THE CONSTRUCTION DOCUMENTS AS IT PERTAINS TO THE MATERIALS, INSTALLATION METHODS, INSPECTION NOTIFICATION, AND SCHEDULED CLOSURE REQUIREMENTS.
- ALL HIGH DENSITY POLYETHYLENE PIPE AND FITTINGS SHALL MEET THE REQUIREMENTS OF AASHTO M-254 LATEST REVISIONS. ALL PIPING TO BE NON-PERFORATED TUBING.

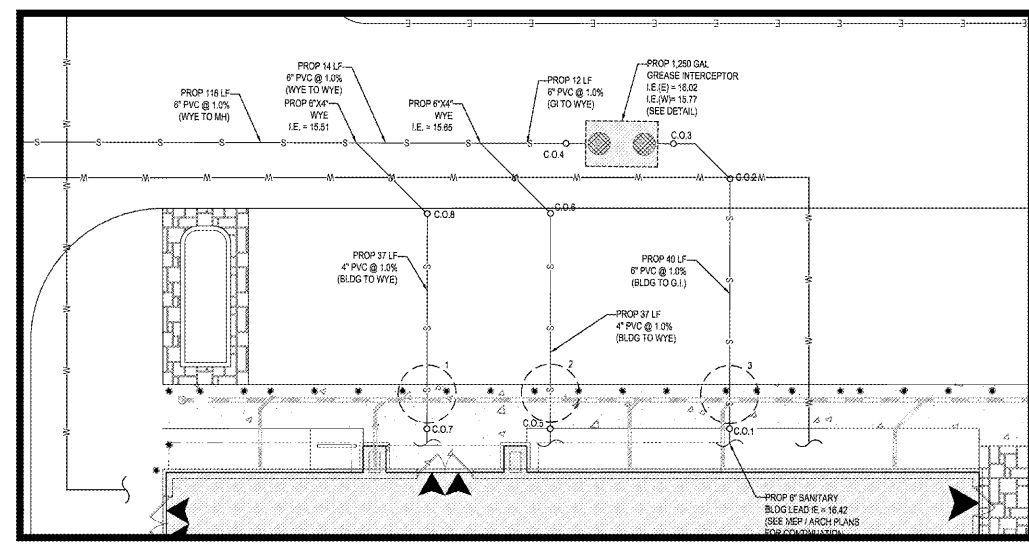


SANITARY SEWER NOTES:

- ALL DISTANCE AND LENGTHS SHOWN ON PLANS AND PROFILE DRAWINGS ARE REFERENCED TO THE CENTER OF STRUCTURE.
- UPON COMMENCING CONSTRUCTION, CONTRACTOR TO TELEVIEW EX. SANITARY SEWER LINE FROM POINT OF CONNECTION THROUGH THE NEXT SEQUENTIAL DOWNSTREAM RUN OF PIPE. ADDITIONALLY, PRIOR TO COMPLETION OF CONSTRUCTION, CONTRACTOR SHALL TELEVIEW THE NEWLY INSTALLED SANITARY SEWER MAIN TO ENSURE NO DIPS OR DEBRIS WITHIN LINE.

- B. MATERIALS**
- ALL PVC SEWER PIPE AND FITTINGS SHALL BE NON-PRESSURE, POLYVINYL CHLORIDE (PVC) PIPE CONFORMING TO ASTM D 3034, SDR 26, WITH PUSH-ON RUBBER GASKET JOINTS.
 - ALL FITTINGS AND ACCESSORIES SHALL BE AS MANUFACTURED OR SUPPLIED BY THE PIPE MANUFACTURER OR APPROVED EQUAL.
 - ALL SANITARY CLEANOUTS WITHIN PAVEMENT SHALL HAVE A LID THAT IS H20 LOADING.

- C. INSTALLATION:**
- PIPE AND FITTINGS:**
 - SEWER PIPE SHALL BE INSTALLED IN ACCORDANCE WITH ASTM D2321, AND THE UNI-BELL PLASTICS PIPE ASSOCIATION'S "RECOMMENDED PRACTICE FOR THE INSTALLATION OF PVC SEWER PIPE".
 - BEDDING AND INITIAL BACKFILL (12 INCHES) OVER SEWER MAINS AND SERVICES SHALL BE SAND WITH NO ROCK LARGER THAN 1/2" IN DIAMETER. PEA ROCK OR 3/4" WASHED ROCK WILL BE USED IN WATER OR WHERE UNSUITABLE BEDDING EXISTS. ALL OTHER FILL SHALL NOT HAVE ROCK LARGER THAN 6" IN DIAMETER.
 - CLEANOUTS:**
 - CLEANOUTS SHALL BE SET PLUMB TO LINE AND GRADE ON FIRM CLEAN SUBGRADE PROVIDING UNIFORM BEARING UNDER THE BASE.
 - ALL OPENINGS AND JOINTS SHALL BE SEALED WATER-TIGHT.
 - SERVICE:**
 - MINIMUM SLOPE OF ALL SERVICE LINES SHALL BE 1.00%.
 - EACH SERVICE CONNECTION SHALL BE PLUGGED WATER-TIGHT WITH AN APPROVED PLUG.
 - CONNECTION OF SERVICES TO BUILDING'S PLUMBING SHALL BE COORDINATED WITH THE ARCHITECTURAL DRAWINGS.
- AFTER CONSTRUCTION OF THE SEWER SYSTEM, THE ENGINEER MAY REQUIRE A VISUAL INFILTRATION AND/OR EXFILTRATION TEST TO BE PERFORMED ON THE ENTIRE SYSTEM OR ANY PART THEREOF.
 - AN AIR TEST MAY BE SUBSTITUTED FOR THE WATER EXFILTRATION TEST, UPON APPROVAL OF THE ENGINEER.
 - SEWER PIPE LEAKAGE ALLOWABLE SHALL NOT EXCEED 150 GALLONS PER DAY PER INCH DIAMETER PER MILE IN A TWO HOUR TEST PERIOD FOR ANY SECTION TESTED. NO VISIBLE LEAKAGE SHALL BE ALLOWED.
 - CONTRACTOR IS RESPONSIBLE FOR CORRECTING ANY DEFICIENCIES PRIOR TO THE CERTIFICATION TO ANY AGENCY.



SANITARY BUILDING CONNECTION DETAIL:
SCALE: 1" = 10'

BOHLER ENGINEERING
 3820 NORTDALE BLVD., SUITE 300B
 TAMPA, FLORIDA 33624
 Phone: (813) 912-4100
 Fax: (813) 912-4101
 FLORIDA BUSINESS CERT. OF AUTH. NO. 3878
 LICENSE NO. 18070-PROJ-BUSINESS-CE-0000000

REVISIONS

REV	DATE	COMMENT	BY
2	2017-07-11	PER COUNTY, SWYING & FOOT COMMENTS	JOP
3	2017-10-13	PER COUNTY COMMENTS	JOP
4	2017-10-27	PER FOOT COMMENTS	JOP
5	2017-11-30	PER COUNTY UTILITY COMMENTS	JOP
6	2018-01-02	PER COUNTY & FOOT COMMENTS	JOP
7	2018-01-25	PER FOOT COMMENTS	JOP
8	2018-02-06	PER FOOT COMMENTS	JOP
9	2018-04-05	HYDRANT PER FIRE MARSHAL	JOP
10	2018-09-07	WAWA BID SET	JOP
11	2018-10-03	PER ROW COMMENTS	SKK

811 KNOW WHAT'S BELOW ALWAYS CALL 811 BEFORE YOU DIG
 www.callsunshine.com

PERMIT SET

PROJECT NO: FLT160078
 DRAWN BY: JOP
 CHECKED BY: KSM
 DATE: 11/02/2016
 SCALE: 1" = 30'
 CAD ID: UPD

RMC PROPERTY GROUP

PROJECT: **WAWA SR 52 & LITTLE RD**
 FOR
 LOCATION OF SITE
 9021 STATE ROAD 52
 HUDSON, FLORIDA 34669
 PASCO COUNTY

BOHLER ENGINEERING
 3820 NORTDALE BLVD., SUITE 300B
 TAMPA, FLORIDA 33624
 Phone: (813) 912-4100
 Fax: (813) 912-4101
 FLORIDA BUSINESS CERT. OF AUTH. NO. 3878
 LICENSE NO. 18070-PROJ-BUSINESS-CE-0000000

10/5/2018

UTILITY PLAN

SHEET NUMBER: **C-7.2**