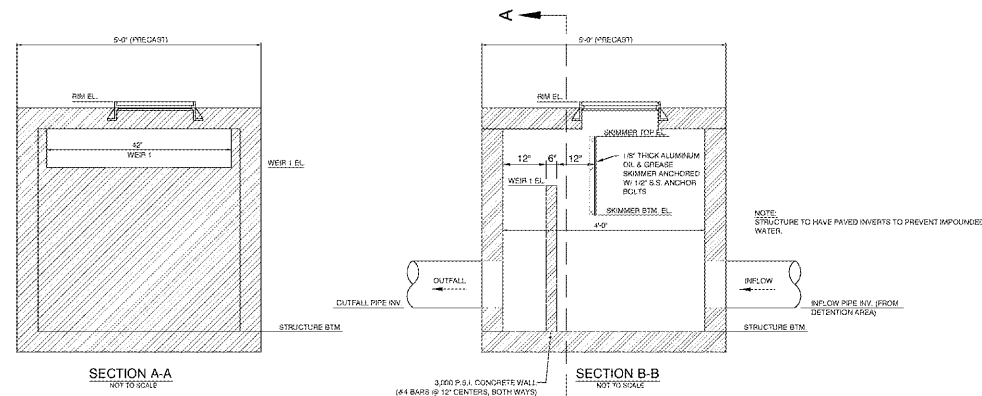
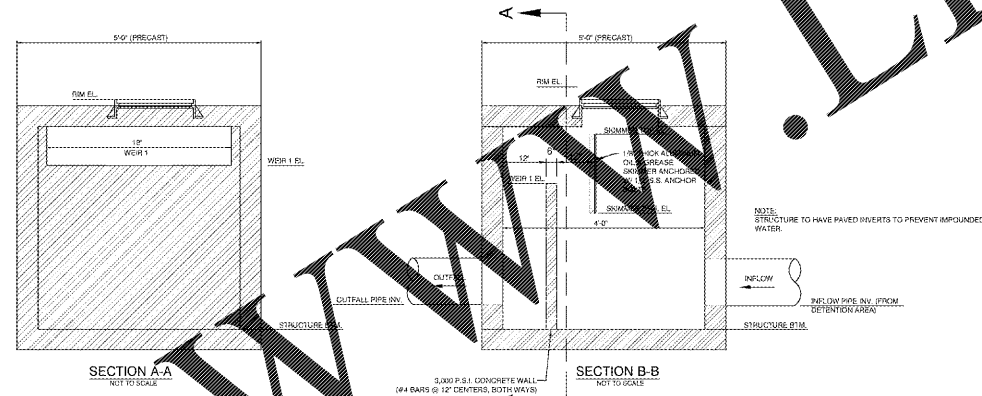


Order Plans @



STR. NO.	RIM	WEIR 1	INFLOW	INFLOW	OUTFALL	OUTFALL	SKIMMER	SKIMMER
	ELEV.	PIPE	INV.	PIPE	INV.	TOP	BTM.	
OCS-2	19.50	17.11	24"	13.50	18"	11.96	18.00	16.50

OCS-2 CONTROL STRUCTURE DETAIL
(MODIFIED TYPE J-7 (ALT. A) INLET (4' X 4'))
NOT TO SCALE



STR. NO.	RIM	WEIR 1	INFLOW	INFLOW	OUTFALL	OUTFALL	SKIMMER	SKIMMER
	ELEV.	PIPE	INV.	PIPE	INV.	TOP	BTM.	
OCS-3	19.00	17.90	N/A	N/A	24"	9.91	18.50	17.00

OCS-3 CONTROL STRUCTURE DETAIL
(MODIFIED TYPE J-7 (ALT. A) INLET (4' X 4'))
NOT TO SCALE

DRAINAGE STRUCTURE NOTES

1. CONTRACTOR SHALL INCLUDE ONE STICK OF REPLACEMENT PIPE FOR ALL STRUCTURES SHOWN AS DOG HOUSE MANHOLES.
2. SEE DETAIL SHEET FOR MANHOLE, SIPHONIC MH, CURB INLET, AND GRATE INLET DETAILS.
3. SEE DETAIL SHEET FOR CLEAN OUT DETAILS.
4. CONTRACTOR SHALL REFER TO ARCHITECTURAL PLANS FOR INVERT ENTERING SIPHONIC MANHOLES.
5. REFER TO ARCHITECTURAL PLANS FOR "CONNECT TO DOWNSPOUT", "CONNECT TO TRUCK" AND "CONNECT TO PLANTER".
6. CALCULATED SLOPES ARE FROM CENTER OF STRUCTURE TO CENTER OF STRUCTURE.
7. CONTRACTOR SHALL REFER TO FOOT INDEX 380 FOR CONCRETE COLLAR SPECIFICATIONS.
8. REFER TO SPECIFICATIONS 02630 FOR PIPE ABBREVIATIONS AND PIPE SPECIFICATIONS.
9. IT SHALL BE THE CONTRACTORS RESPONSIBILITY TO VERIFY PIPE LENGTHS BASED UPON GRADING AND DRAINAGE PLAN IN PREPARATION OF LUMP SUM BID. CONTRACTOR IS CAUTIONED TO VERIFY SCALE OF DRAWING DURING PLAN REPRODUCTION. CONTRACTOR IS RESPONSIBLE FOR TAKEOFF FOR PIPE LENGTH QUANTITIES.

RIM ELEVATIONS NOTES

1. RIM ELEVATIONS OF "GRATE INLETS" REFERS TO THE FINISHED GRADE AT THE TOP OF GRATE.
2. RIM ELEVATIONS OF "CURB INLETS" REFERS TO THE TOP OF STRUCTURE ELEVATION, NOT THE THROAT ELEVATION.
3. RIM ELEVATIONS OF "MANHOLE" REFERS TO THE FINISHED GRADE AT THE TOP OF MANHOLE COVER.
4. RIM ELEVATION FOR "CLEANOUT", "45 WYE", REFERS TO THE FINISHED GRADE OF SURFACE ABOVE.
5. RIM ELEVATIONS OF "SIPHONIC MH" REFERS TO THE FINISHED GRADE AT TOP OF GRATED MANHOLE.

BOHLER ENGINEERING
 3820 NORTHDALE BLVD., SUITE 3008
 TAMPA, FLORIDA 33624
 Phone: (813) 912-4100
 Fax: (813) 912-4101
 FLORIDA BUSINESS CERT. OF AUTH. NO. 37919
 LICENSE NO. 14020707-B-00000101-00000001

REVISIONS

REV	DATE	COMMENT	BY
2	2017-07-11	PER COUNTY, SWYING & FOOT COMMENTS	JDP
3	2017-10-13	PER COUNTY COMMENTS	JDP
4	2017-10-27	PER FOOT COMMENTS	JDP
5	2017-11-30	PER COUNTY UTILITY COMMENTS	JDP
6	2018-01-02	PER COUNTY & FOOT COMMENTS	JDP
7	2018-01-25	PER FOOT COMMENTS	JDP
8	2018-02-06	PER FOOT COMMENTS	JDP
9	2018-04-05	HYDRANT PER FIRE MARSHAL	JDP
10	2018-09-07	WAWA BID SET	JDP
11	2018-10-03	PER ROW COMMENTS	SKK

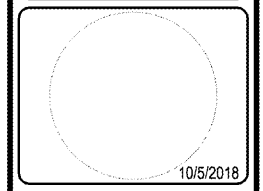
811 KNOW WHAT'S BELOW
 ALWAYS CALL 811
 BEFORE YOU DIG
 It's fast. It's free. It's the law.
www.callsunshine.com

PERMIT SET

PROJECT No.: FLT160078
 DRAWN BY: JDP
 CHECKED BY: KSM
 DATE: 11/03/2018
 SCALE: N.T.S.
 CAD ID: GPO

WAWA SR 52 & LITTLE RD
 FOR
RMC PROPERTY GROUP
 LOCATION OF SITE
 9021 STATE ROAD 52
 HUDSON, FLORIDA 34689
 PASCO COUNTY

BOHLER ENGINEERING
 3820 NORTHDALE BLVD., SUITE 3008
 TAMPA, FLORIDA 33624
 Phone: (813) 912-4100
 Fax: (813) 912-4101
 FLORIDA BUSINESS CERT. OF AUTH. NO. 37919
 LICENSE NO. 14020707-B-00000101-00000001



SHEET TITLE:
GRADING AND DRAINAGE STRUCTURE SCHEDULE
 SHEET NUMBER:
C-6.3