



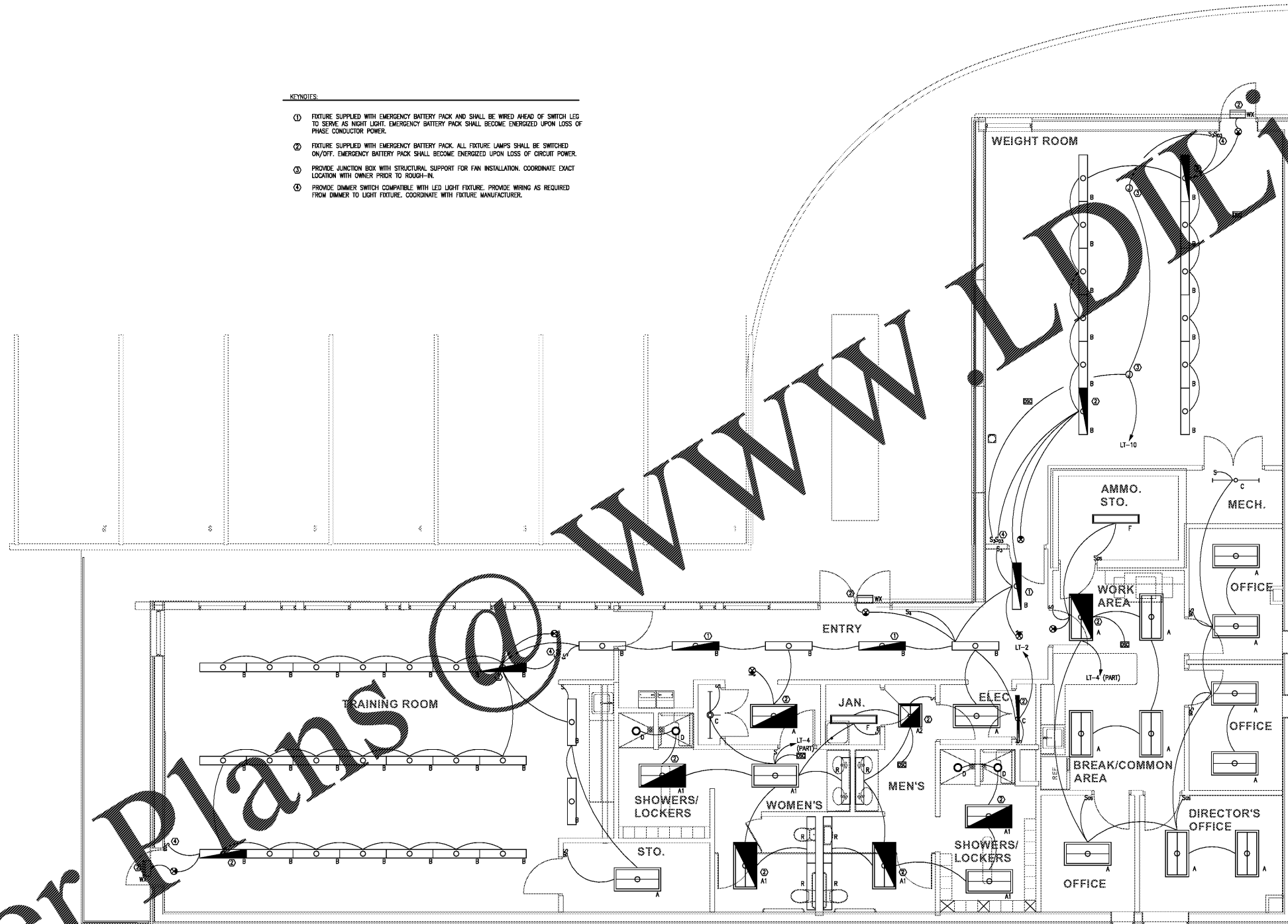
5525 Interstate North Pkwy  
Suite 200  
Atlanta, GA 30328  
404-965-1287 tel  
404-601-9859 fax  
cauliga@westside-engineering.com



**BEACOCK ARCHITECTS**  
5525 INTERSTATE NORTH PKWY  
ATLANTA, GEORGIA 30328  
404-214-5200 PHONE  
404-214-5208 FAX

**KEYNOTES**

- ① FIXTURE SUPPLIED WITH EMERGENCY BATTERY PACK AND SHALL BE WIRED AHEAD OF SWITCH LEG TO SERVE AS NIGHT LIGHT. EMERGENCY BATTERY PACK SHALL BECOME ENERGIZED UPON LOSS OF PHASE CONDUCTOR POWER.
- ② FIXTURE SUPPLIED WITH EMERGENCY BATTERY PACK. ALL FIXTURE LAMPS SHALL BE SWITCHED ON/OFF. EMERGENCY BATTERY PACK SHALL BECOME ENERGIZED UPON LOSS OF CIRCUIT POWER.
- ③ PROVIDE JUNCTION BOX WITH STRUCTURAL SUPPORT FOR FAN INSTALLATION. COORDINATE EXACT LOCATION WITH OWNER PRIOR TO ROUGH-IN.
- ④ PROVIDE DIMMER SWITCH COMPATIBLE WITH LED LIGHT FIXTURE. PROVIDE WIRING AS REQUIRED FROM DIMMER TO LIGHT FIXTURE. COORDINATE WITH FIXTURE MANUFACTURER.



Order Plans @

RELOCATED TRAINING CENTER  
FOR  
THE FLOYD COUNTY JAIL  
2526 NEW CALHOUN HIGHWAY N.E.  
ROME, GEORGIA 30161



DATE	REVISION

PROJECT NO:  
420 03 01  
DATE:  
JULY 17, 2018  
DRAWING TITLE:  
ELECTRICAL LIGHTING  
PLAN

**1 ELECTRICAL LIGHTING PLAN**  
E2.10 SCALE: 1/4" = 1'-0"

**E2.10**

THIS DRAWING AND ANY REPRODUCTIONS ARE THE PROPERTY AND COPYRIGHT OF BEACOCK ARCHITECTS, INC. AND MAY NOT BE USED IN ANY MANNER WITHOUT THE EXPRESS WRITTEN PERMISSION OF BEACOCK ARCHITECTS, INC.