



LEGEND

TAG	SYMBOL	DESCRIPTION
A/C		ABOVE CEILING
AFF		ABOVE FINISHED FLOOR
AHU		AIR HANDLING UNIT
B/F		BELOW FLOOR
B/G		BELOW GRADE
CO		CLEAN OUT
CW		DOMESTIC COLD WATER
		CHECK VALVE
		NEW WORK
EXIST.		EXISTING PIPE / EQUIPMENT
FCU		FAN COIL UNIT
FCD		FLOOR CLEAN OUT
FD		FLOOR DRAIN
FDC		FIRE DEPARTMENT CONNECTION
FS		FLOOR SINK
HB		HOSE BIBB
HD		HUB DRAIN
HW		DOMESTIC HOT WATER
HWR		HOT WATER RETURN
NFVH		NON FREEZE WALL HYDRANT
SAN		SANITARY PIPING
ST		STORM PIPING
V		VENT PIPING
VTR		VENT THROUGH ROOF
		BALL VALVE
WCO		WALL CLEAN OUT
W		WASTE PIPING
WSP		WATER SOURCE HEAT PUMP

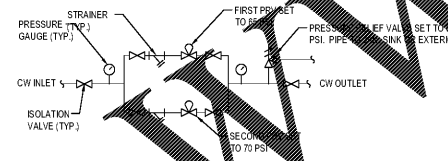
- GENERAL NOTES (APPLY TO ALL SHEETS):
- DRAWINGS ARE SCHEMATIC IN NATURE. CONTRACTOR SHALL PROVIDE ALL MATERIALS, EQUIPMENT, TOOLS AND LABOR NECESSARY TO PROVIDE A COMPLETE PLUMBING SYSTEM COMPLIANT WITH ALL REQUIRED CODES & STANDARDS.
 - REFER TO ARCHITECTURAL DRAWINGS FOR EXACT FIXTURE MOUNTING HEIGHTS & LOCATIONS.
 - COORDINATE ALL SAN, VENT, CW, HW, ETC. WITH ALL OTHER TRADES.
 - ALL SANITARY PIPING SHALL BE SLOPED AT 1/8" PER FOOT.
 - ALL PIPING SHALL BE PRESSURE TESTED PRIOR TO CONCEALING OR INSULATING THE PIPING.
 - MATERIALS EXPOSED IN RETURN AIR PLenums SHALL BE NON COMBUSTIBLE, A FLAME SPREAD INDEX NOT MORE THAN 25 AND A SMOKE DEVELOPED INDEX OF NOT MORE THAN 50.

ELECTRIC WATER HEATER SCHEDULE

TAG	CAPACITY (GPM)	RECOVERY RATE (GPH @ 90F)	VOLTS/PHASE	BASIS OF DESIGN	NOTES
WH-1	36	164	240/1	AO SMITH DRE-85	

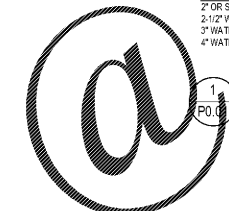
PLUMBING FIXTURES & CONNECTION SCHEDULE

TAG	FIXTURE	CW	HW	WASTE	VENT	FIXTURE SPECIFICATION
P-1H	ADA COMPLIANT WATER CLOSET	1-1/2"	-	4"	2"	ADA COMPLIANT, WHITE VITREOUS CHINA, FLOOR MOUNT, ELONGATED BOWL WITH TOP SPUD, 1.28 GPF ELECTRONIC FLUSH VALVE, AND SOLID PLASTIC OPEN FRONT SEAT WITH CHECK HINGE. BASIS OF DESIGN: AMERICAN STANDARD 3451.001 BOWL, BEAMIS 10555SC SEAT AND SLOAN 8111-1.28 FLUSH VALVE.
P-2	WATER CLOSET	1-1/2"	-	4"	2"	WHITE VITREOUS CHINA, FLOOR MOUNT, ELONGATED BOWL WITH TOP SPUD, 1.28 GPF ELECTRONIC FLUSH VALVE, AND SOLID PLASTIC OPEN FRONT SEAT WITH CHECK HINGE. BASIS OF DESIGN: AMERICAN STANDARD 3451.001 BOWL, BEAMIS 10555SC SEAT AND SLOAN 8111-1.28 FLUSH VALVE.
P-3	URNAL	1"	-	2"	2"	WHITE VITREOUS CHINA, WALL MOUNT, WITH TOP SPUD, FLOOR MOUNTED FIXTURE CARRIER AND 0.5 GPF BATTERY POWERED ELECTRONIC FLUSH VALVE. BASIS OF DESIGN: AMERICAN STANDARD 8590.025 AND SLOAN 8186.05 FLUSH VALVE.
P-4H	LAVATORY - UNDERMOUNT	1/2"	1/2"	2"	1-1/2"	ADA COMPLIANT, WHITE VITREOUS CHINA, UNDER MOUNT LAVATORY WITH GRID STRAINER, TAIL PIECE, OFFSET P-TRAP, LOOSE KEY SERVICE STOPS, ADA INSULATION KIT, ASSE 1070 CERTIFIED BELOW DECK MIXING VALVE, 0.5 GPM, CHROME PLATED, SOLID BRASS, BATTERY POWERED ELECTRONIC METERING FAUCET. BASIS OF DESIGN: AMERICAN STANDARD OVALYN 0455.221 SINK, LEONARD 170A-LF MIXING VALVE AND SLOAN EAF250.
P-5	SINK - DROP IN	1/2"	1/2"	2"	1-1/2"	ADA COMPLIANT, SELF RIMMING, 18 GA STAINLESS STEEL DROP IN SINK WITH 21"x15-3/4"x6" DEEP BOWL DIMENSIONS, SOUND DAMPENING UNDER COATINGS, GRID STRAINER, TAIL PIECE, OFFSET P-TRAP, SERVICE STOPS, ADA INSULATION KIT, 2.2 GPM/LAMBAR FLOW, CHROME PLATED, SOLID BRASS FAUCET WITH WRIST BLADE HANDLES AND RIGID 8" GOOSE NECK SPOUT. BASIS OF DESIGN: ELKAY LRAD2521 SINK AND CHICAGO FAUCET 201-AGN8A3-317C.
P-6	SHOWER	1/2"	1/2"	2"	2"	1.5 GPM SHOWER HEAD SET, VALVE, HAND HELD SHOWER, 39" HOSE, SLIDE BAR AND VACUUM BREAKER. VALVE SHALL PRESSURE BALANCING, ANTI SCALD TYPE WITH HOT LIMIT SAFETY STOP. BASIS OF DESIGN: AMERICAN STANDARD "RELIANT 3" T386 501.002 HEAD SET AND R1205S VALVE.
P-7	MOP SINK	3/4"	3/4"	2"	2"	2400A TERRAZO FLOOR MOUNTED MOP SINK WITH FULL PERIMETER STAINLESS STEEL CAP, 3" CALKED DRAIN CONNECTION, STAINLESS STEEL GRID STRAINER, SINK STAINLESS STEEL WALL PANNELS ON ALL ADJACENT WALLS, 36" LONG HOSE, HOSE HOOK SERVICE SINK FAUCET WITH BUCKET HOOK AND 3/4" HOSE CONNECTION. BASIS OF DESIGN: STERN WILLIAMS - SB900 SINK AND STERN WILLIAMS T-10V FAUCET.
P-8	DRINKING FOUNTAIN	1/2"	-	2"	1-1/2"	ADA COMPLIANT, BLEVEL BARRIER FREE DRINKING FOUNTAIN. DRINKING FOUNTAIN SHALL PRODUCE 8.0 GPH OF 50F WATER AT 90F AMBIENT TEMPERATURE. BASIS OF DESIGN: HALSEY TAYLOR HAC085-BLD DRINKING FOUNTAIN.
FD	FLOOR DRAIN	1/2" TP	-	2"	1-1/2"	FLOOR DRAIN WITH 8" SQUARE ADJUSTABLE, VANGAL PROOF STRAINER IN NICKLE BRONZE FINISH. BASIS OF DESIGN: JR SMITH 2000 SERIES. PROVIDE WITH TRAP PRIMER.
HD	HUB DRAIN	1/2" TP	-	2"	1-1/2"	HUB DRAIN - PROVIDE WITH TRAP PRIMER.
NFVH	NON-FREEZE WALL HYDRANT	3/4"	-	-	-	LOOSE KEY HOSE BIBB WITH NICKLE PLATED BRASS BOX AND VACUUM BREAKER. BASIS OF DESIGN: WOODFORD 885.

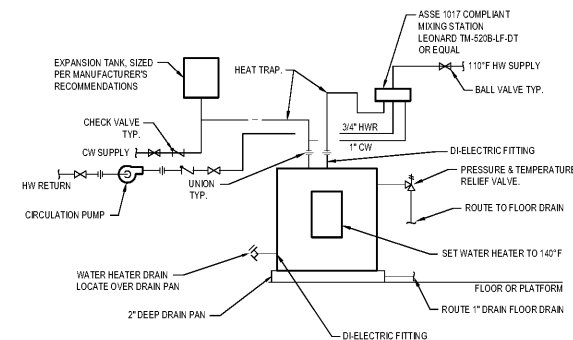


PRV SIZING:
2" OR SMALLER WATER LINE - INSTALL (1) LINE SIZE PRV
2-1/2" WATER LINE - INSTALL (2) 2" PRVs
3" WATER LINE - INSTALL (2) 2" PRV
4" WATER LINE - INSTALL (3) 2" PRVs

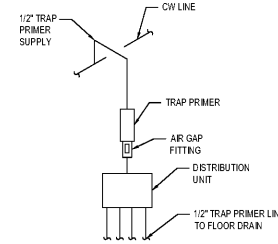
1 PRV DETAIL
SCALE: N.T.S.



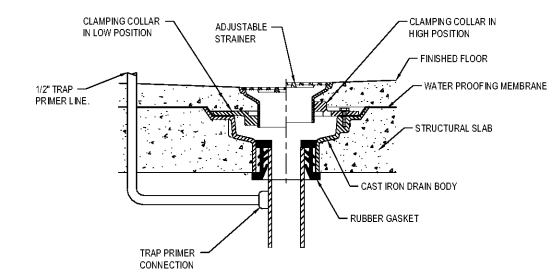
Order Plans



2 WATER HEATER DETAIL
SCALE: N.T.S.



3 TRAP PRIMER DETAIL
SCALE: N.T.S.



4 FLOOR DRAIN DETAIL
SCALE: N.T.S.

PUMP SCHEDULE

TAG	FLOWRATE (GPM)	HEAD (FT)	NPSHR (FT)	RPM	MOTOR HP	EFFICIENCY	VOLTS/PHASE	PUMP TYPE	BASIS OF DESIGN	NOTES
MWRP-1	20	10	-	2850	1/12	-	120/1	INLINE	BELL & GOSSETT PL-30B	1,2

- NOTES:
- ALL WETTED PUMP PARTS SHALL BE LEAD FREE.
 - PROVIDE WITH REMOTE AQUASTAT & TIMER TO CYCLE PUMP ON AND OFF TO MAINTAIN HW LOOP TEMPERATURE DURING OCCUPIED OURS.

RENOVATIONS TO THE FLOYD COUNTY JAIL
2526 NEW CALHOUN HIGHWAY N.E.
ROME, GEORGIA 30161



DATE	REVISION

PROJECT NO: 420 03 01
DATE: MAY 18, 2018
DRAWING TITLE: LEGEND, NOTES, DETAILS & SCHEDULES - PLUMBING

P0.01

THIS DRAWING AND ANY REVISIONS THEREON ARE THE PROPERTY AND COPYRIGHT OF FRACOCK ARCHITECTS, INC. AND MAY NOT BE USED IN ANY MANNER WITHOUT THE EXPRESS WRITTEN PERMISSION OF FRACOCK ARCHITECTS, INC.