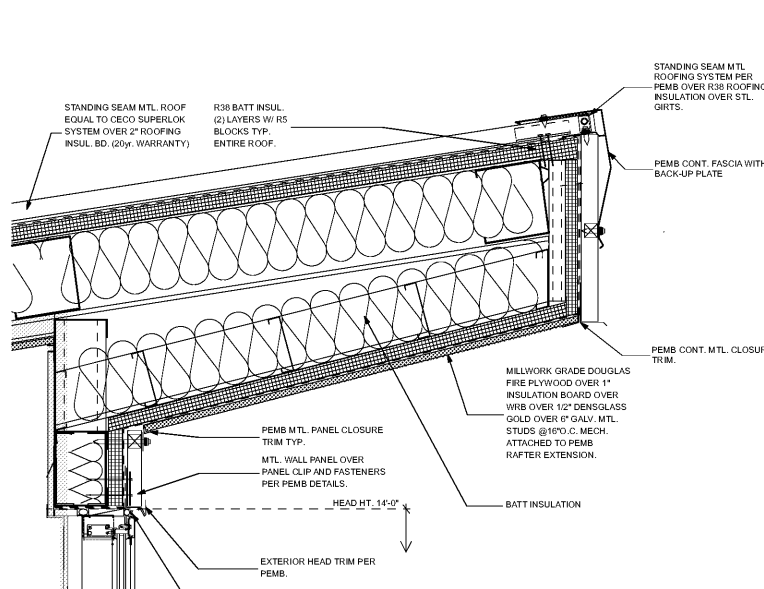


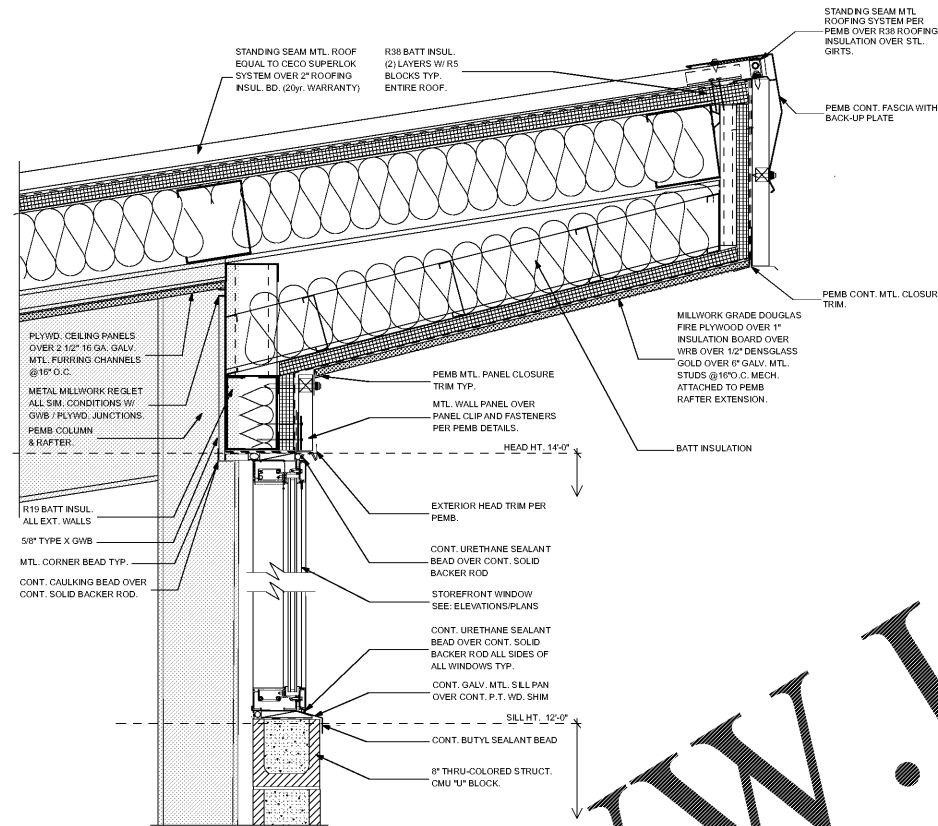


EAOC ARCHITECTS
 2526 NEW CALHOUN HIGHWAY N.E.
 ATLANTA, GEORGIA 30328
 404-251-5200 PHONE
 404-214-5208 FAX

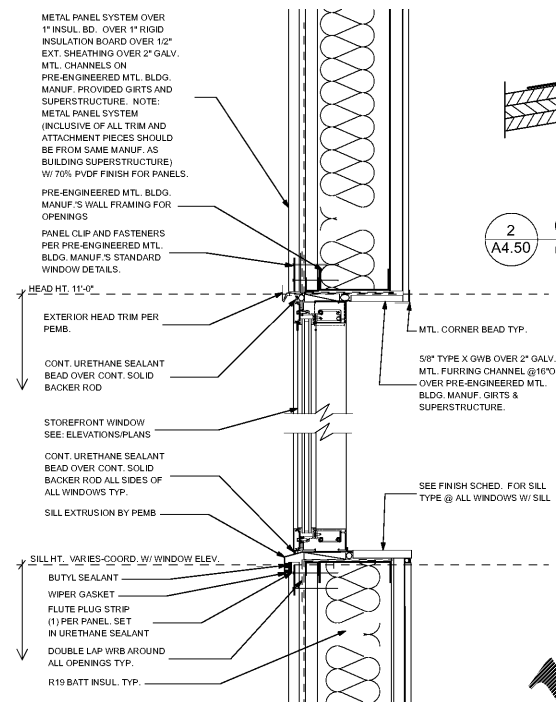
RELOCATED TRAINING CENTER
 FOR
 THE FLOYD COUNTY JAIL
 2526 NEW CALHOUN HIGHWAY N.E.
 ROME, GEORGIA 30161



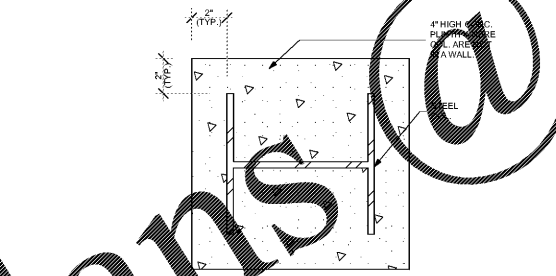
1 DETAIL @ HIGH ROOF EAVE
 A4.50 SCALE: 1 1/2" = 1'-0"



6 DETAIL @ HIGH ROOF EAVE CONDITION @ CLERESTORY
 A4.50 SCALE: 1 1/2" = 1'-0"

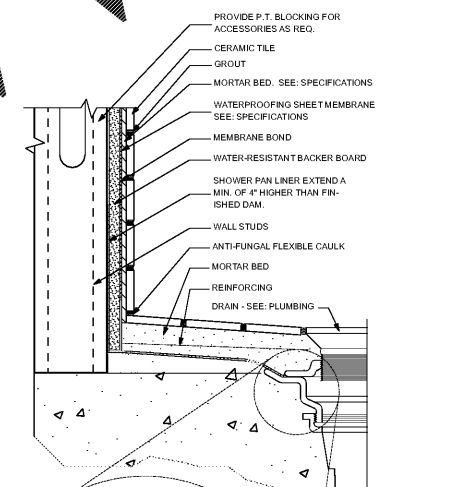


2 DETAIL @ PLYWOOD CEILING / SOFFIT
 A4.50 NOT TO SCALE

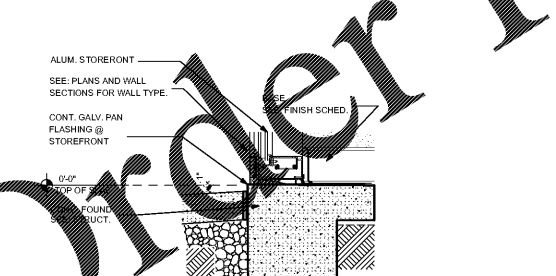


4 DETAIL @ EXPOSED COLUMN BASE
 A4.50 NOT TO SCALE

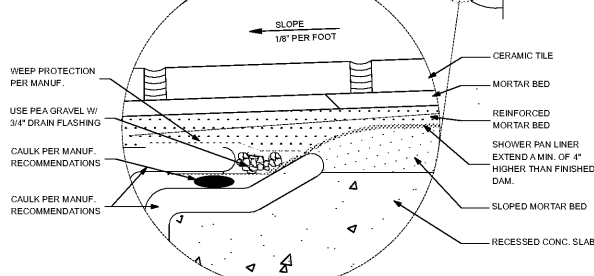
3 DETAIL @ TYP. EXTERIOR WALL
 A4.50 SCALE: 1 1/2" = 1'-0"



7 DETAIL @ SHOWERS
 A4.50 SCALE: 1 1/2" = 1'-0"



5 DETAIL @ EXPOSED COLUMN BASE
 A4.50 NOT TO SCALE



DATE	REVISION

PROJECT NO:
 420.03.01
 DATE:
 JULY 17, 2018
 DRAWING TITLE:
 SECTION DETAILS

A4.50

THIS DRAWING AND ANY REPRODUCTIONS ARE THE PROPERTY OF EAOC ARCHITECTS, INC. AND MAY NOT BE REPRODUCED OR TRANSMITTED IN ANY FORM OR BY ANY MEANS WITHOUT THE EXPRESS WRITTEN PERMISSION OF EAOC ARCHITECTS, INC.

BIM Server: PEA Server 21420.03.01 Floyd Co Training Facilities

Order Plans @ www.LDILine.com