

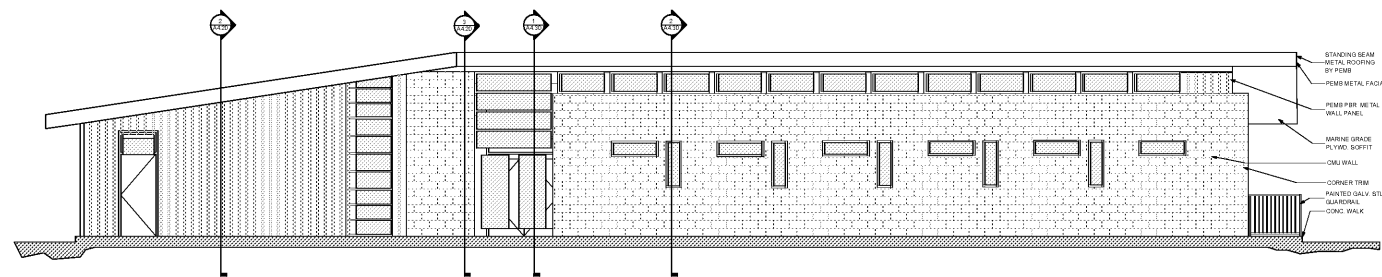


EAOC
ARCHITECTS

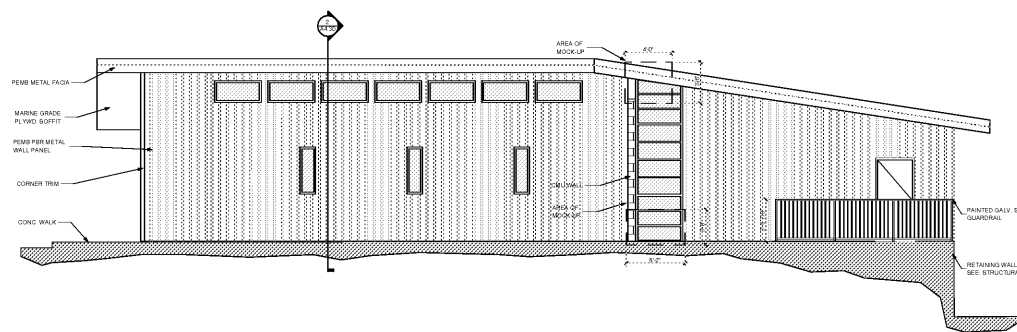
175 WESTBURY PKWY
ATLANTA, GEORGIA 30328
404-251-5200 PHONE
404-214-5208 FAX

GENERAL NOTES :

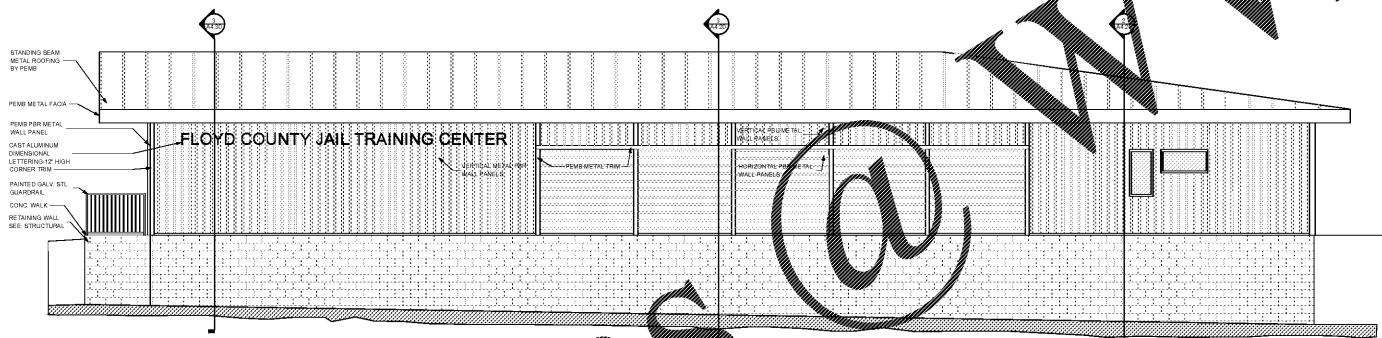
1. PEMB METAL WALL PANELS ARE TO BE INSTALLED IN A VERTICAL PATTERN AS SHOWN UNLESS NOTED OTHERWISE AS ON THE NORTHWEST ELEVATION. THE METAL WALL PANELS ON THE NORTHWEST ELEVATION SHALL HAVE GALV. METAL CHANNELS RUN VERTICALLY OVER THE PEMB GRITS IN ORDER TO RUN METAL WALL PANEL SECTIONS INDICATED HORIZONTALLY. PROVIDE PEMB TRIM AS RECOMMENDED BY THE PEMB BETWEEN WALL PANEL SECTIONS AS SHOWN AT PANEL SECTIONS AND WHERE PANELS TRANSITIONS FROM VERTICAL TO HORIZONTAL INSTALLATION.
2. SEE SPECIFICATIONS FOR ITEMS TO BE PROVIDED BY PEMB (ALL TRIM PIECES, PANELS CLIPS, ETC.).
3. PROVIDE CONTINUOUS SEALANT BEADS AT JOINTS AS RECOMMENDED BY THE PEMB.
4. ALL STOREFRONT AND CURTAIN WALL WINDOWS ARE INDICATED ON SHEET A5.20. SEE ALSO SPECIFICATIONS. ANY BRAND NAMES REFERENCED ARE BASIS OF DESIGN. FOR SUBSTITUTIONS PROCESS SEE SPECIFICATIONS UNLESS NOTED ELSEWHERE.
5. NOTE 6" CURB INDICATED ON STRUCTURAL DRAWINGS UNDER 6" PEMB PROVIDED GRITS.



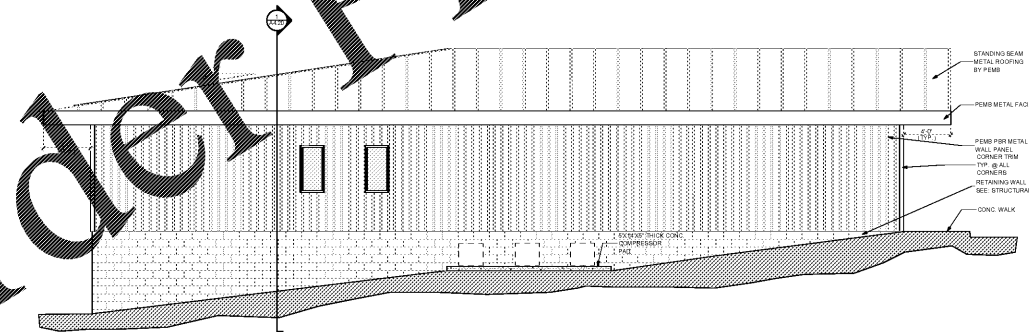
1 SOUTHEAST ELEVATION
A4.10 SCALE: 1:72



2 NORTHEAST ELEVATION
A4.10 SCALE: 1:72



3 NORTHWEST ELEVATION
A4.10 SCALE: 1:72



4 SOUTHWEST ELEVATION
A4.10 SCALE: 1:72

WWW.LDILine.com

RELOCATED TRAINING CENTER
FOR
THE FLOYD COUNTY JAIL
2526 NEW CALHOUN HIGHWAY N.E.
ROME, GEORGIA 30161

DATE	REVISION

PROJECT NO:
420.03.01
DATE:
JULY 17, 2018
DRAWING TITLE:
BUILDING ELEVATIONS

A4.10

THIS DRAWING AND ANY REPRODUCTIONS ARE THE PROPERTY AND COPYRIGHT OF EAOC ARCHITECTS, INC. AND MAY NOT BE REPRODUCED OR TRANSMITTED IN ANY FORM OR BY ANY MEANS WITHOUT THE EXPRESS WRITTEN PERMISSION OF EAOC ARCHITECTS, INC.