



EA OCO ARCHITECTS
 575 W. FERGUSON ST. PKWY
 ATLANTA, GEORGIA 30328
 404.254.2200 PHONE
 404.214.5208 FAX

RELOCATED TRAINING CENTER
 FOR
 THE FLOYD COUNTY JAIL
 2526 NEW CALHOUN HIGHWAY N.E.
 ROME, GEORGIA 30161

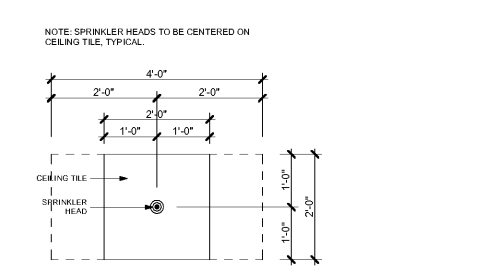
| REFLECTED CEILING PLAN LEGEND | |
|-------------------------------|--|
| | 2' X 4' INDIRECT LED LIGHT FIXTURE ("R" DENOTES RECESSED FIXTURE WITH FLUSH TRIM WHERE INDICATED) |
| | 2' X 2' INDIRECT LED LIGHT FIXTURE ("R" DENOTES RECESSED FIXTURE WITH FLUSH TRIM WHERE INDICATED) |
| | SUSPENDED INDIRECT/DIRECT LED CURVED DESIGN LIGHTING FIXTURE; PEERLESS #EGCM4L-SCFP, OR EQUIVALENT |
| | RECESSED WATERPROOF SHOWER LIGHT |
| | LED 1' X 4' SURFACE MOUNTED UTILITY LIGHT |
| | 1' X 4' RECESSED LED FIXTURE; FLUSH MOUNTED INTO GWB CEILING; FLUSH TRIM |
| | WALL MOUNTED UTILITY FIXTURE; LED |
| | MOTORIZED PROJECTION SCREEN WITH CLOSURE DOORS; INSTALLED WITHIN SOFFIT; FINISHED CONTROL REFERENCE SPECIFICATIONS |
| | CEILING MOUNTED PROJECTOR; LOCATION TO PROVIDE J-BOX AND DATA CONNECTIONS |
| | ROD-MOUNTED CEILING FAN |
| | EXHAUST FAN |
| | 2' X 2' HVAC SUPPLY |
| | 1' X 2' HVAC SUPPLY |
| | 2' X 2' HVAC RETURN AIR GRILLE |
| | ACOUSTICAL CEILING TILE AND GRID; REFERENCE SPECIFICATIONS |
| | GYPSUM BOARD CEILING |
| | 4' X 8' ARCHITECTURAL PLYWOOD PANELS |
| | EXPOSED STRUCTURE |

GENERAL NOTES

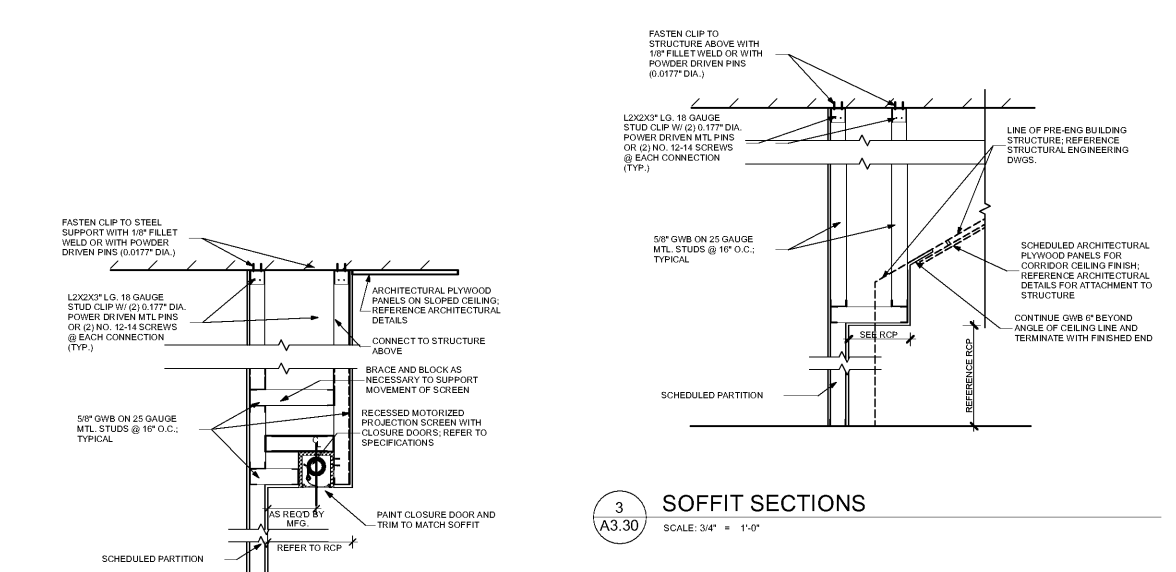
- PROVIDE PHASED DIMMING CONTROLS IN THE TRAINING ROOM TO ALLOW FOR VARIOUS MULTIPURPOSE USES; REFERENCE ENGINEERING DRAWINGS
- CEILING HEIGHT TO BE 9'-0" UNLESS NOTED OTHERWISE
- ALL DEVICE COVERPLATES TO BE BRUSHED STAINLESS STEEL/ALUMINUM FINISH. SUBMIT SAMPLE TO ARCHITECT FOR APPROVAL
- STANDARD LIGHT SWITCH LOCATION SHALL BE 1'-0" TO CENTERLINE OF DEVICE FROM INSIDE FACE OF DOOR FRAME ON LATCH SIDE, UNLESS NOTED OTHERWISE ON THE PLAN
- REFER TO ENGINEERED LIGHTING PLAN FOR SWITCH LOCATIONS AND TYPE
- ACOUSTICAL CEILING TILE AND GRID BASIS OF DESIGN: USG #22350 "RADAR HIGH CAC" PANEL ON DX GRID, OR EQUIVALENT; WHITE FINISH
- REFER TO ELECTRICAL ENGINEERING DRAWINGS FOR LOCATION OF EMERGENCY LIGHTING IN ADDITION TO EXTERIOR LIGHTING AND WALL MOUNTED WALL PACKS FOR EMERGENCY EGRESS LIGHTING

KEY NOTES

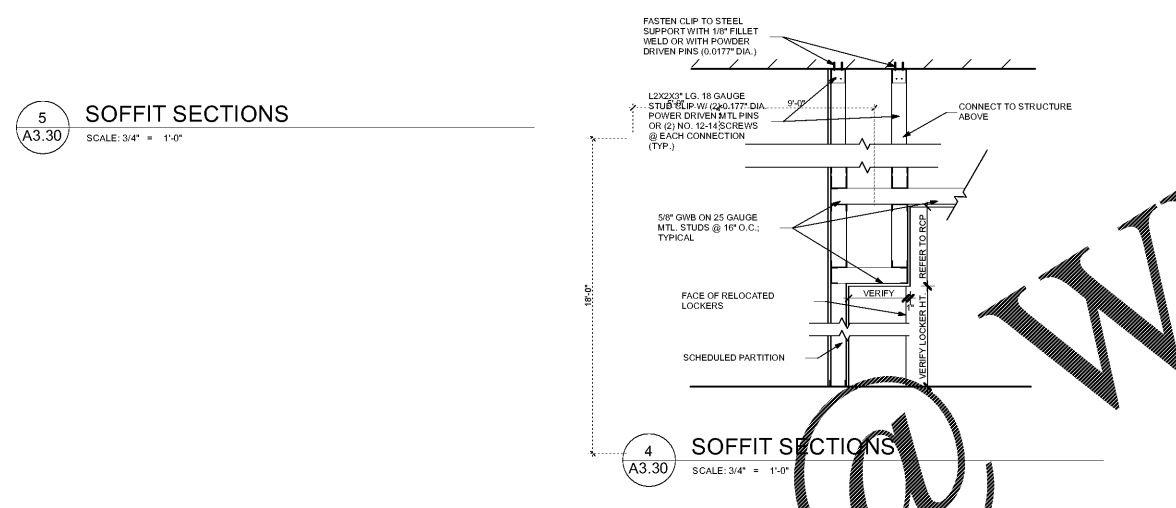
- PROVIDE A MOTORIZED PROJECTION SCREEN RECESSED WITHIN THE GWB SOFFIT; GC TO PROVIDE REQUIRED BLOCKING AND FRAME FOR A FLUSH INSTALLATION; REFER TO SPECIFICATION FOR ADDITIONAL INFORMATION; REFERENCE ENGINEERING DRAWINGS FOR WIRING & CONTROLS
- INSTALL OWNER'S PROJECTOR MOUNT FOR SLOPED CEILING AT A DISTANCE AND ANGLE FROM THE SCREEN PER THE OWNER'S AV VENDOR; GC TO COORDINATE WITH AV VENDOR FOR EXACT LOCATION OF POWER AND DATA FEEDS AT CEILING
- COORDINATE TERMINATION LOCATION OF SOFFIT TO NOT INTERFERE WITH FULL HEIGHT EXTERIOR WINDOW. ALLOW A MINIMUM OF 3" FROM OUTSIDE OF WINDOW FRAME TO SOFFIT VERTICAL EDGE
- REFERENCE SPECIFICATIONS AND DETAILS FOR ARCHITECTURAL PLYWOOD PANEL CEILINGS
- PROVIDE WALL MOUNTED LADDER AND CEILING HATCH, WHERE REQUIRED, FOR ACCESS TO MECHANICAL PLATFORM ABOVE; REFERENCE SPECIFICATIONS
- REFERENCE ENGINEERING DRAWING FOR MOUNTING HEIGHTS OF SUSPENDED LINEAR DIRECT/INDIRECT LIGHTING FIXTURES
- WHERE INDICATED, "DRY FOG" PAINT EXPOSED STRUCTURE AS SCHEDULED; REFERENCE FINISH SCHEDULE AND PAINTING SPECIFICATION SECTION "09 91 23 INTERIOR PAINTING" FOR ADDITIONAL INFORMATION
- J-BOXES ON SLOPED CEILING OF WEIGHT ROOM TO ACCOMMODATE OWNER-PURCHASED CEILING FANS; GC TO VERIFY FINAL LOCATION DOES NOT CONFLICT WITH LIGHTING, FIRE SUPPRESSION OR HVAC DUCTWORK
- FINAL LOCATION OF RECESSED LIGHTING FIXTURE WITHIN THE GWB CEILING TO BE COORDINATED WITH THE GC, ARCHITECT, MECHANICAL & LIGHTING SUB-CONTRACTORS; EXACT FIXTURE LOCATIONS ALSO TO BE VERIFIED DURING THE SUBMITTAL PHASE. PROVIDE ACCESS PANELS IN SAME GWB CEILING; REFER TO MEP FOR QUANTITY AND LOCATION. COORDINATION OF ALL ELEMENTS WILL AVOID CONFLICTS OF THE ABOVE



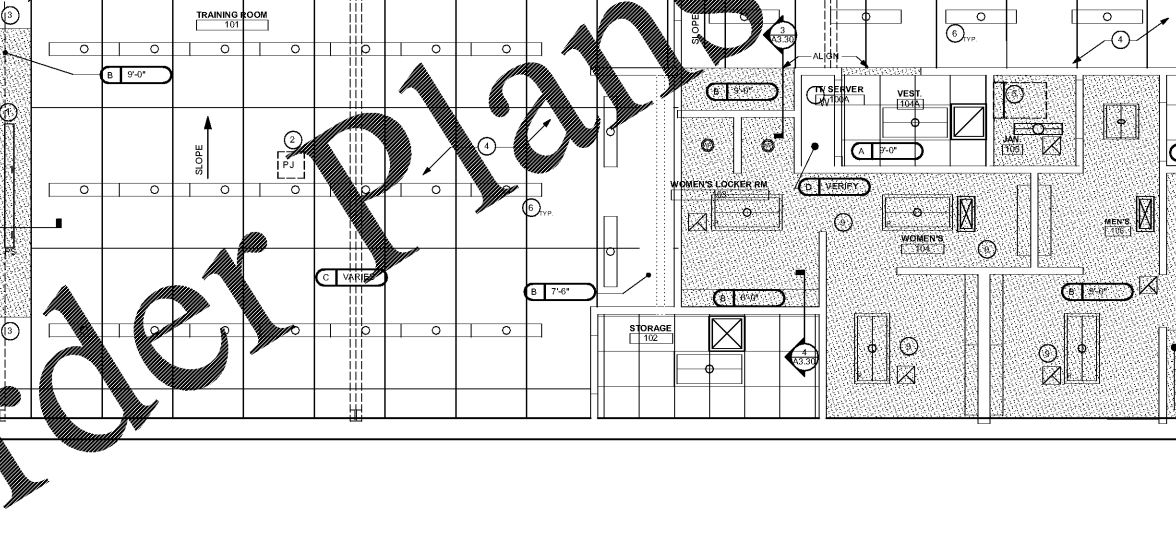
1 SPRINKLER HEAD DETAIL
 A3.30 SCALE: 3/4" = 1'-0"



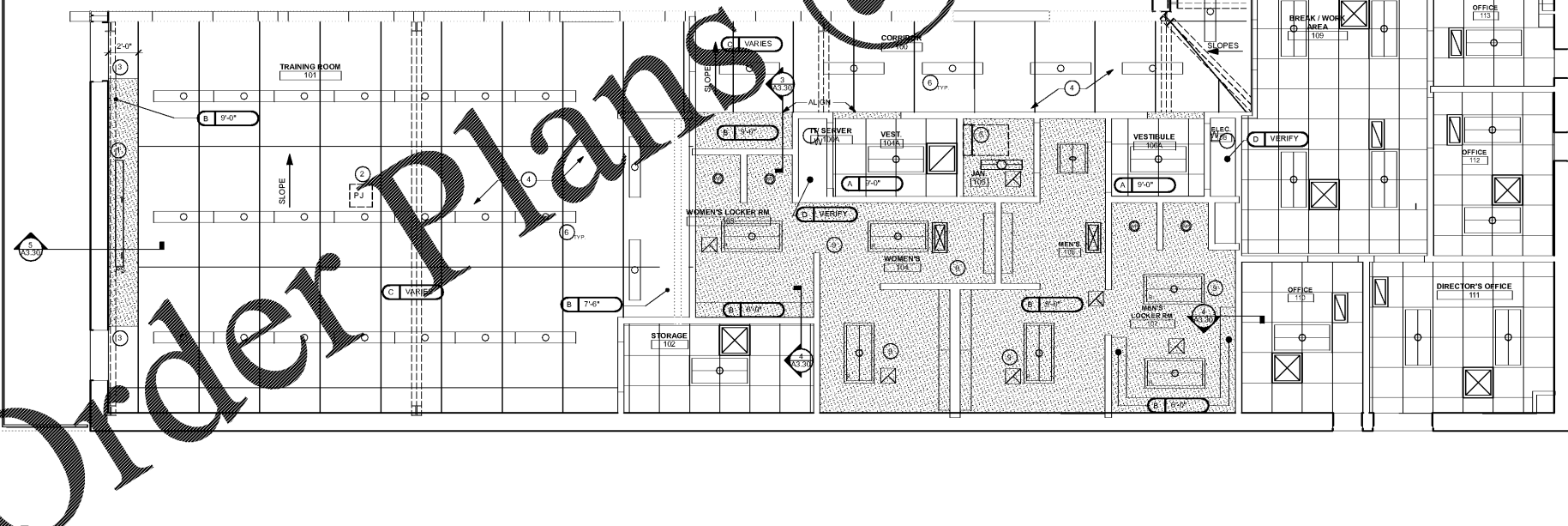
3 SOFFIT SECTIONS
 A3.30 SCALE: 3/4" = 1'-0"



4 SOFFIT SECTIONS
 A3.30 SCALE: 3/4" = 1'-0"



5 SOFFIT SECTIONS
 A3.30 SCALE: 3/4" = 1'-0"



REFLECTED CEILING PLAN
 A3.30 SCALE: 1/4" = 1'-0"

| DATE | REVISION |
|------|----------|
| | |
| | |
| | |

PROJECT NO:
 420.03.01
 DATE:
 JULY 17, 2018
 DRAWING TITLE:
 REFLECTED CEILING PLAN

A3.30

THIS DRAWING AND ANY REPRODUCTIONS THEREOF ARE THE PROPERTY AND COPYRIGHT OF EA OCO ARCHITECTS, INC. AND MAY NOT BE REPRODUCED, COPIED, OR TRANSMITTED IN ANY FORM OR BY ANY MEANS WITHOUT THE EXPRESS WRITTEN PERMISSION OF EA OCO ARCHITECTS, INC.

Order Plans @ WWW.LDOnline.com