

REVISIONS:	SUBMITTER TO
XX	XX/XX/XXXX
XX	XX

SOUTHLAND ENGINEERING
 CIVIL ENGINEERS - LAND SURVEYORS - LAND PLANNERS
 114 OLD MILL ROAD, CARTERSVILLE, GEORGIA 30120
 PHONE: 770-387-0440

CITY OF ROME
FLOYD COUNTY JAIL TRAINING CENTER
 LAND LOT(S) 193, 23rd DISTRICT, 3rd SECTION,
 CITY OF ROME, FLOYD COUNTY, GEORGIA



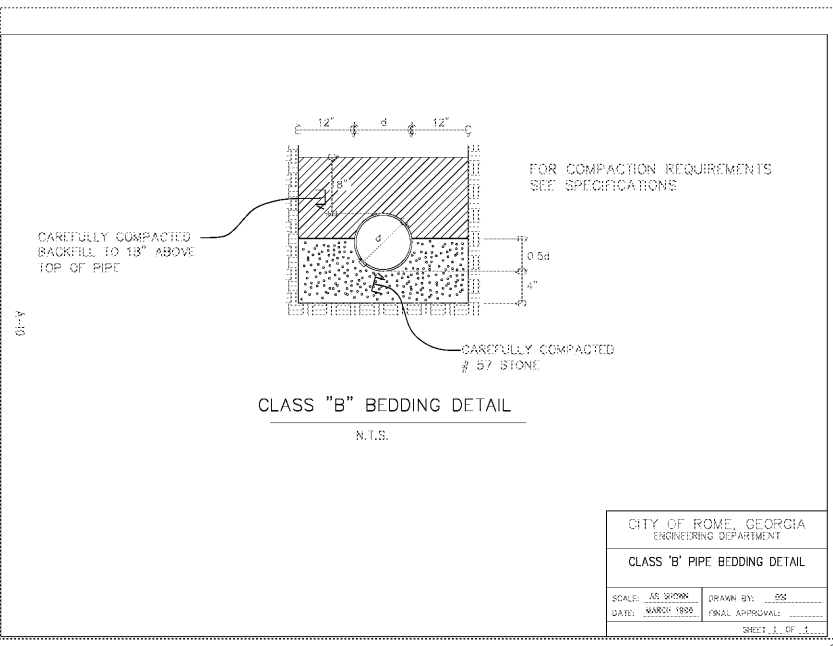
GSWCC NO. 3422

SHEET TITLE:

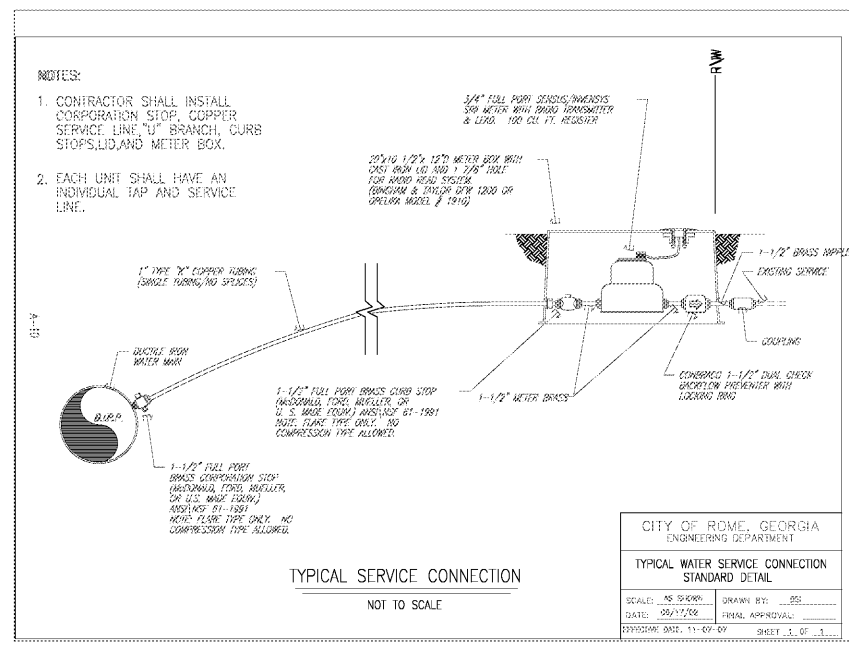
WATER & SEWER DETAILS

DRAWING NO.:

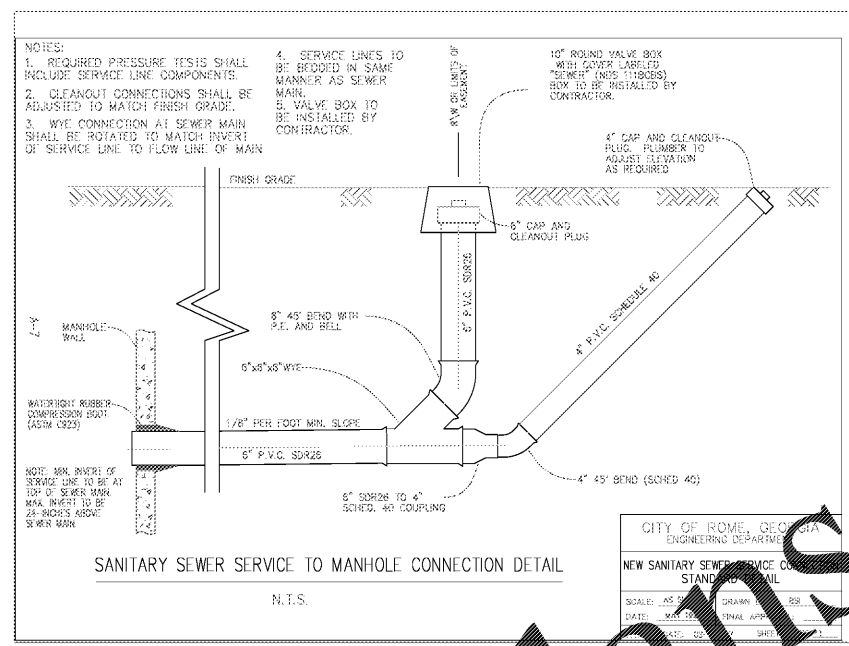
C702



CITY OF ROME, GEORGIA
 ENGINEERING DEPARTMENT
CLASS 'B' PIPE BEDDING DETAIL
 SCALE: AS SHOWN DRAWN BY: [signature]
 DATE: MARCH 1998 FINAL APPROVAL: [signature]
 SHEET 1 OF 1



CITY OF ROME, GEORGIA
 ENGINEERING DEPARTMENT
TYPICAL WATER SERVICE CONNECTION STANDARD DETAIL
 SCALE: AS SHOWN DRAWN BY: [signature]
 DATE: 09/17/08 FINAL APPROVAL: [signature]
 SHEET 1 OF 1



CITY OF ROME, GEORGIA
 ENGINEERING DEPARTMENT
NEW SANITARY SEWER SERVICE CONNECTION STANDARD DETAIL
 SCALE: AS SHOWN DRAWN BY: [signature]
 DATE: MARCH 1998 FINAL APPROVAL: [signature]
 SHEET 1 OF 1

Order Plans

@

WWW.LDILine.com